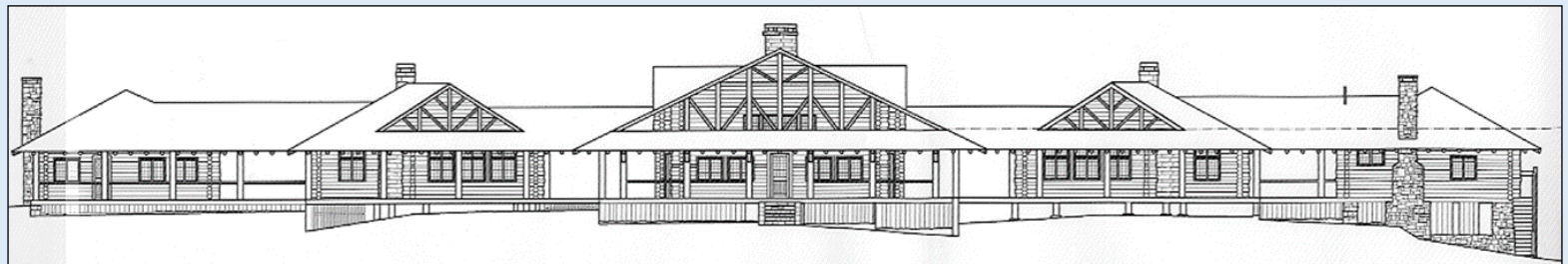


*Maximizing Developable Land Through
Historic Preservation*



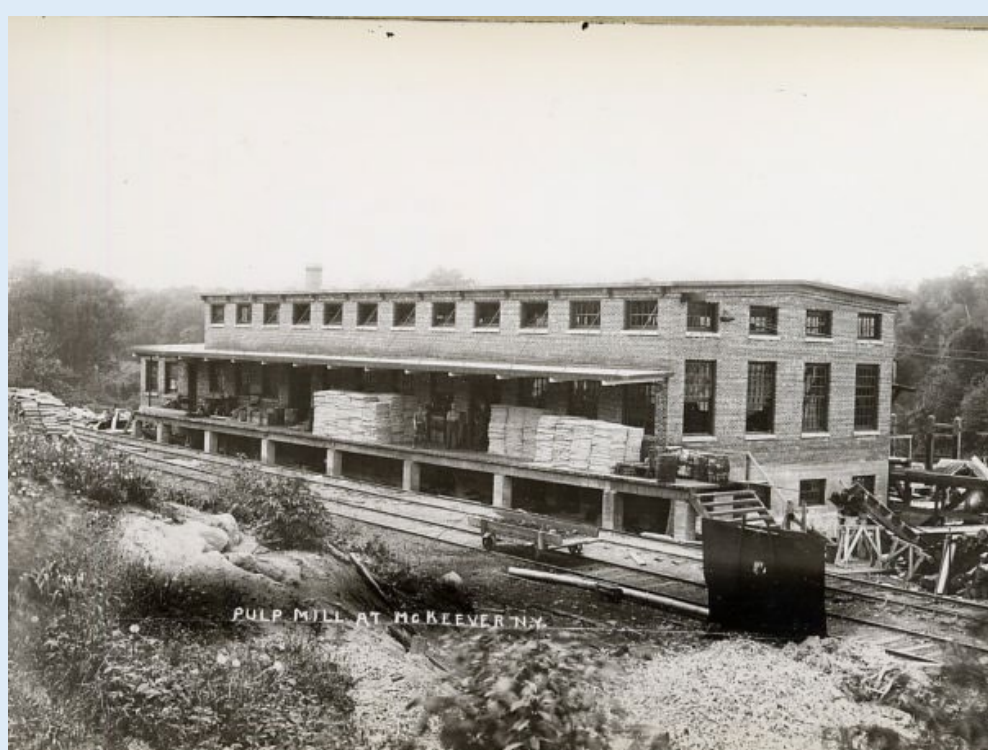


Main Street and Hotel Altamont, Tupper Lake, N. Y.



01098 Au Sable Forks, N. Y. Main St.





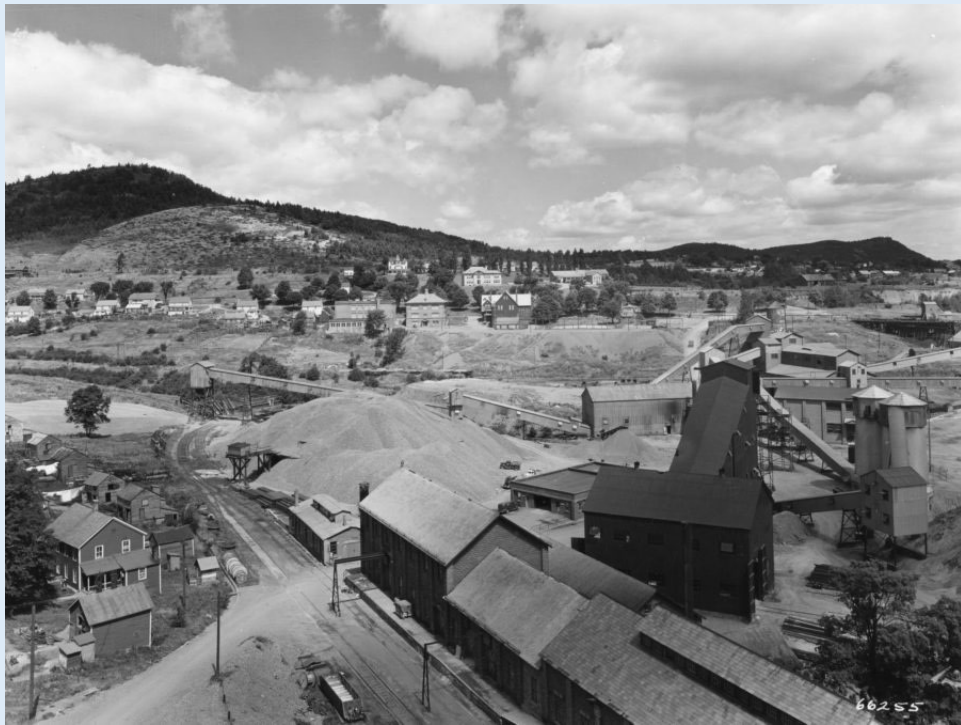
PULP MILL AT MCKEEVER N.Y.



ADIRONDACK AND AUSABLE RIVER SCENERY.

G. W. BALDWIN'S Collections of

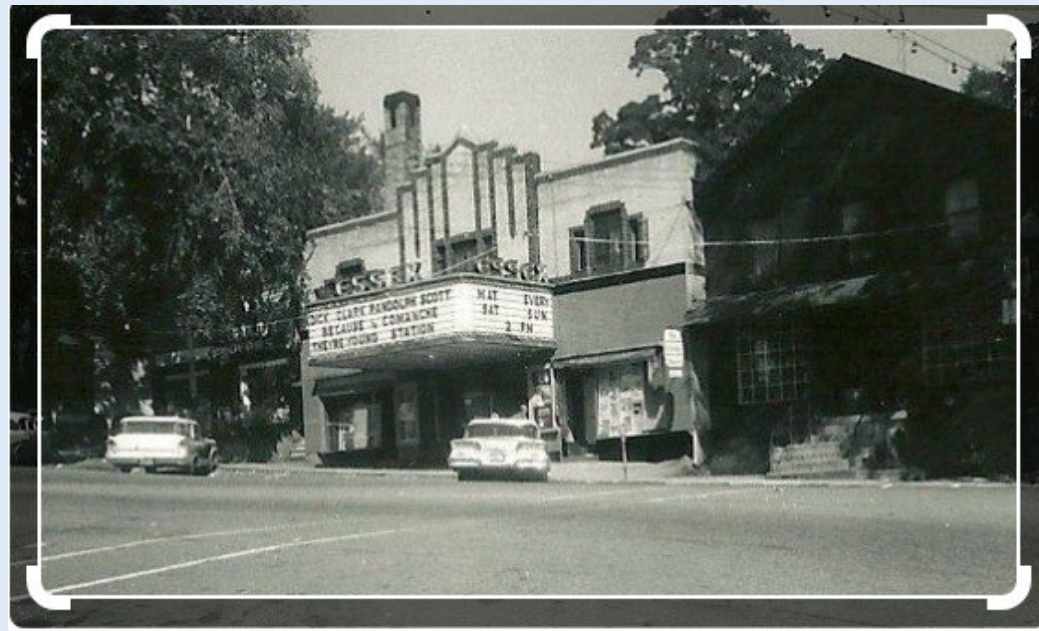




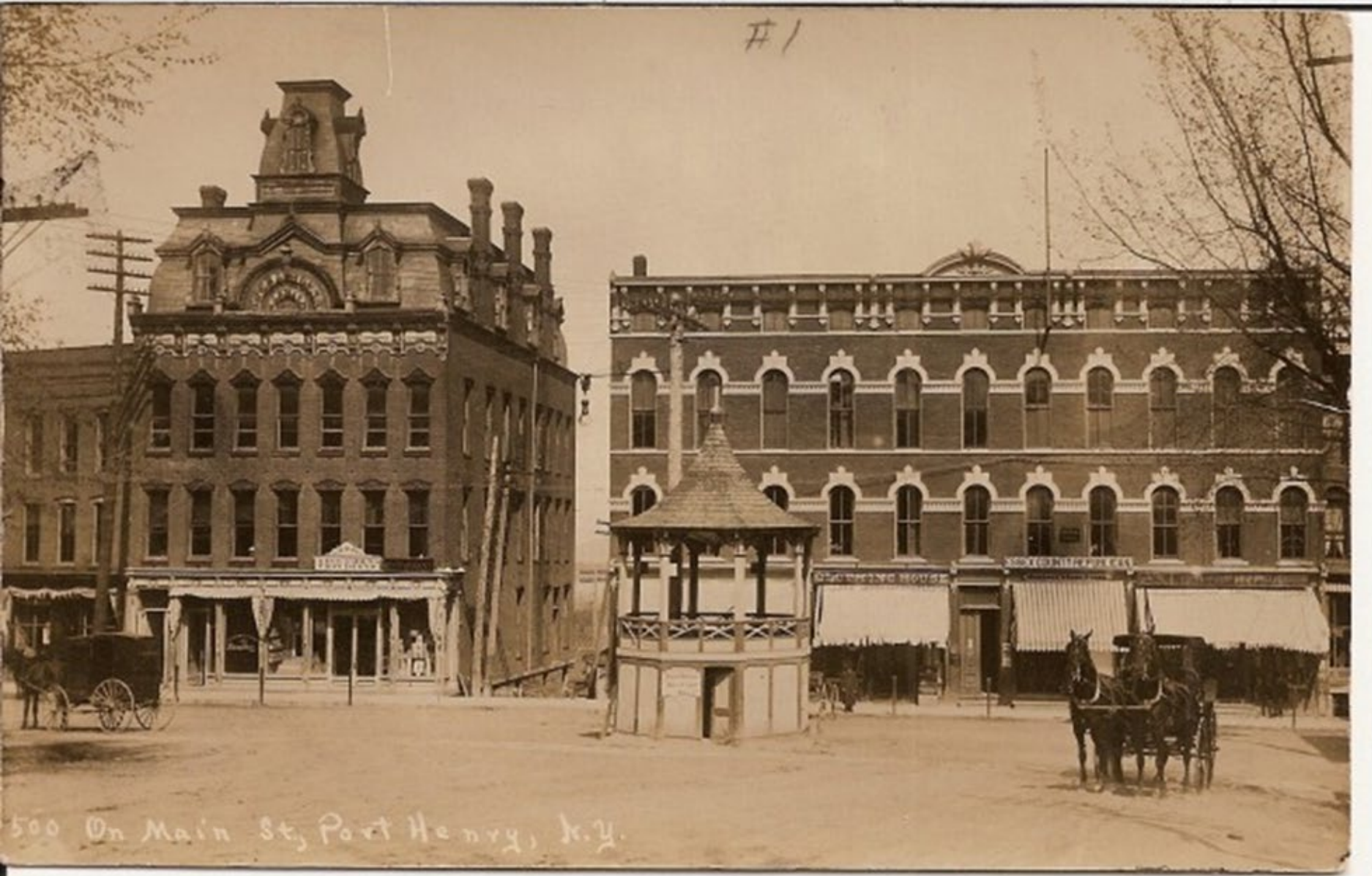


Main St. from Cliff Ave., Tupper Lake, N. Y.





#1



500 On Main St, Port Henry, N.Y.









