



**Adirondack
Park Agency**

Adirondack Park Land Classification Statistics

February 9, 2022

The APA Act

The Adirondack Park Agency Act(Executive Law, Article 27)

The Agency prepared the State Land Master Plan, which was signed into law in 1972, followed by the Adirondack Park Land Use and Development Plan (“APLUDP”) in 1973.

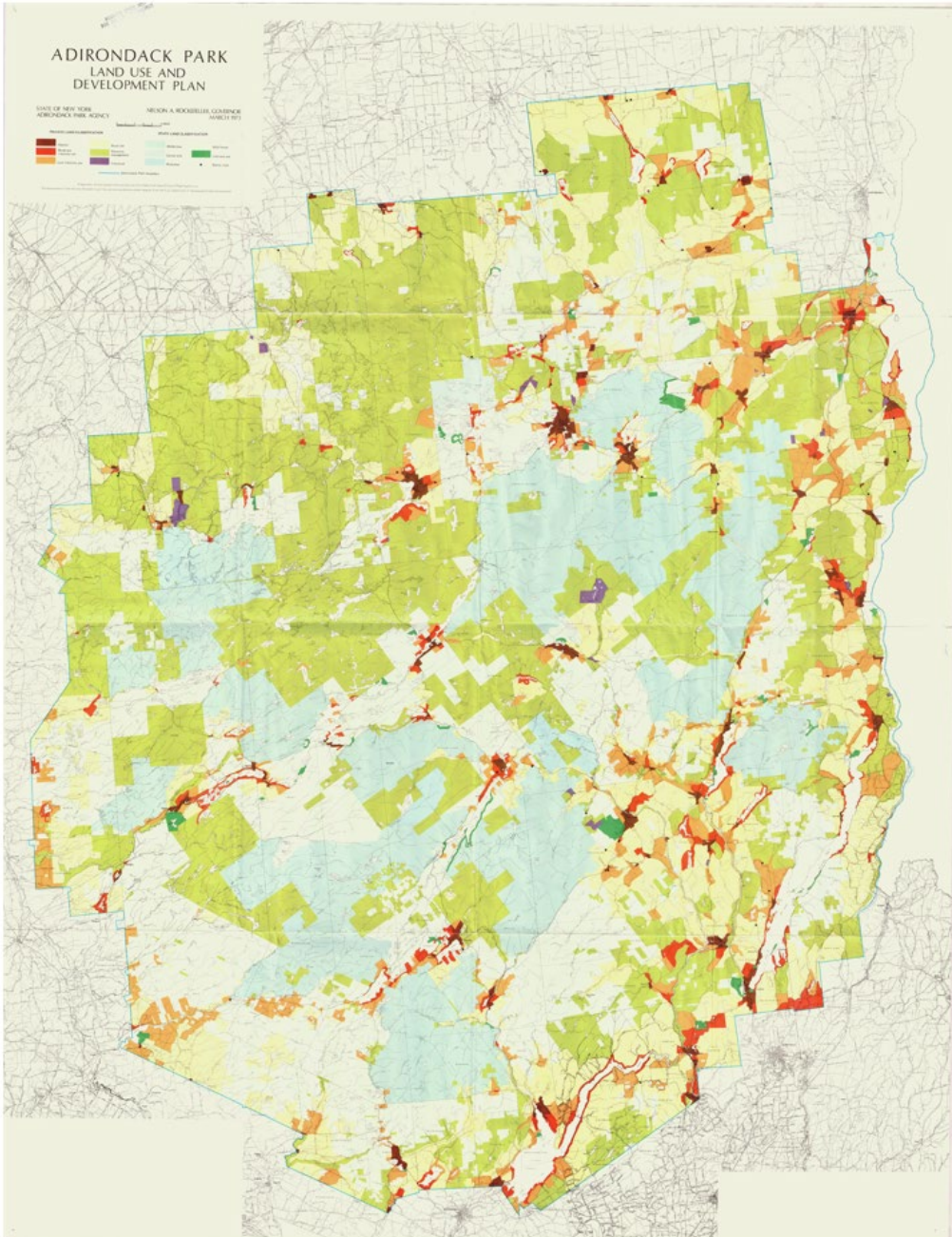
The APA Act gives the Adirondack Park Agency the authority to author and maintain the official Adirondack Park Land Use and Development Plan Map and it is to be kept on file in the APA headquarters here in Ray Brook.

GIS Official Map

Starting in December 1987 the GIS version of the map became the official Adirondack Park Land Use and Development Plan Map.

Found in the Opinions of the Attorney General from December 1987 –

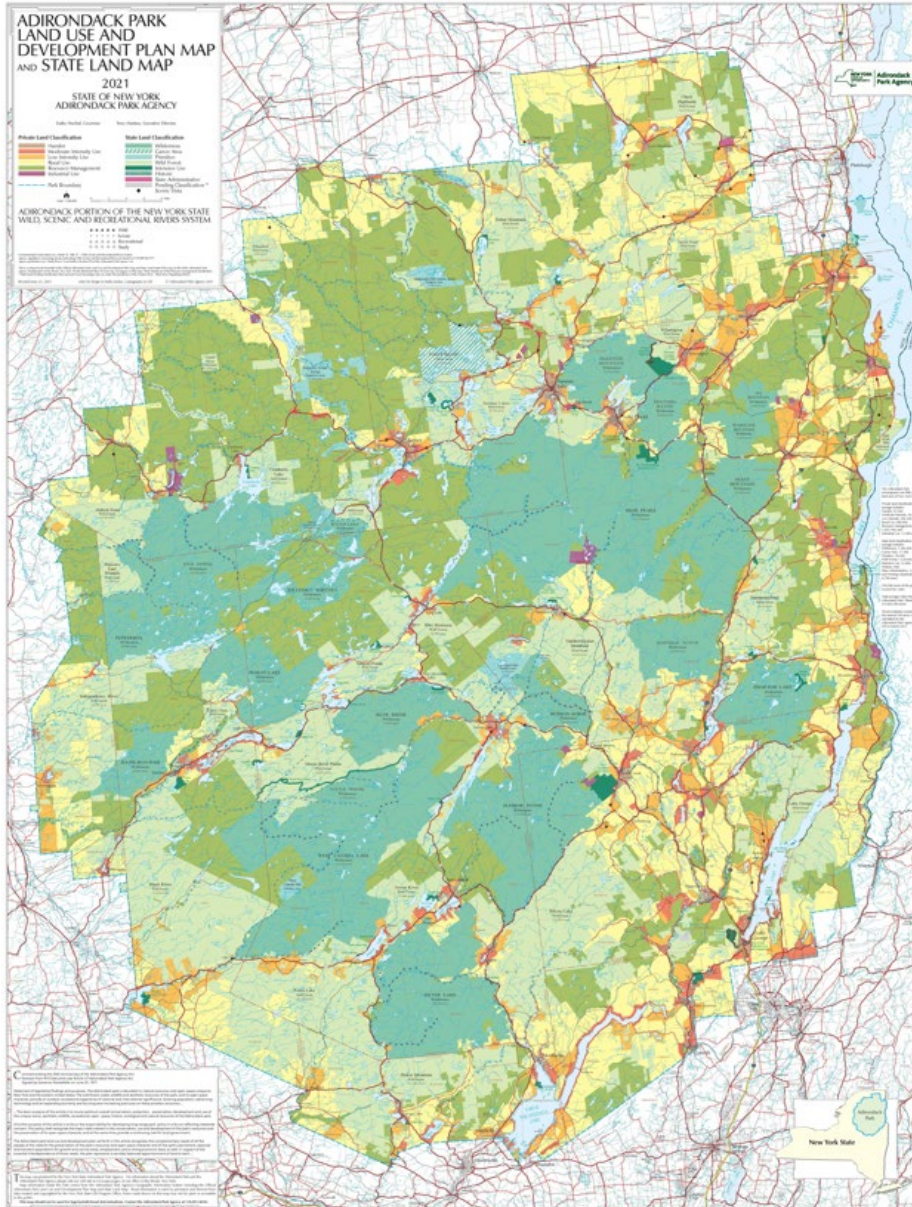
“Executive Law does not require that the official map consist of any particular scale or materials”



The March 1973 Adirondack Park Land Use and Development Plan Map.

50th Anniversary in 2023!

Facsimile Mapping for APA



Current and past versions of our APLUDP facsimile map can be found online at the Maps & Geographic Information Systems (GIS) webpage of hosted on ArcGIS online.

<https://www.apa.ny.gov/gis/index.html>

<https://adirondack.maps.arcgis.com/home/index.html>

Land Classification Statistics

Our GIS systems have allowed us to calculate Land Class statistics over the years and to provide us with acreage and data for other analysis on the park.

Adirondack Park Agency processing of 2010 US Census data for portion of northern New York State.		
Places		places2010census.kmz
Towns & Cities		county_sub2010census.kmz
School Districts		school_districts.kmz
Census Tracts		tracts2010census.kmz
Census Blocks for the Adirondack Park (13Mb Esri File Geodatabase format GIS data)		Zipfile of File Geodatabase

STATISTICS

2018 Park Land Use Classification Acreage Statistics		
State and private land class acreage and percent by county.		2018 statistics
2017 Park Land Use Classification Acreage Statistics		
State and private land class acreage and percent by county.		2017 statistics
State and private land class acreage by county, town, and village.		2017 statistics
2014 Park Land Use Classification Acreage Statistics		
State and private land class acreage and percent by county.		2014 statistics
2011 Park Land Use Classification Acreage Statistics		
State and private land class acreage and percent by county.		2011 statistics
2009 Park Land Use Classification Acreage Statistics		
State and private land class acreage and percent by county.		2009 statistics
2007 Park Land Use Classification Acreage Statistics		
State and private land class acreage and percent by county.		2007 statistics
2003 Park Land Use Classification Acreage Statistics		
State and private land class acreage and percent by county.		2003 statistics
2000 Park Land Use Classification Acreage Statistics		
State and private land class acreage and percent by county.		2000 statistics
Population - Seasonal Estimate		
An estimate based on parcels classified as seasonal residence in 2006 combined with US Census number of persons per household in 2000.		view statistics (pdf 23kb)

ANALYSIS & PRESENTATIONS

Park Population Estimate of Counties from 2010 Census		
Estimate of the Adirondack Park 2010 Population		view slideshow (pdf 2.4MB)
Park Population Estimate of Counties from 2000 Census		

<https://www.apa.ny.gov/gis/index.html>

2000 Land Classification Statistics



Acreage by County and Land Use Classification -- August, 2000

	Clinton	Essex	Franklin	Fulton	Hamilton	Herkimer	Lewis	Oneida	Saratoga	St. Lawrence	Warren	Washington	Park Total	% of Park
Hamlet	3,065	18,864	7,071	3,725	4,879	1,578	0	239	1,250	2,181	10,587	0	53,438	0.92%
Moderate Intensity	7,214	20,291	9,210	5,563	12,363	4,878	1,722	1,295	6,342	2,520	25,546	4,973	101,917	1.75%
Low Intensity	31,304	77,651	21,496	18,443	28,043	22,325	11,619	51	10,297	2,399	38,612	8,038	270,278	4.64%
Rural Use	125,471	184,884	133,171	47,850	42,884	49,875	40,771	7,249	73,632	97,631	171,160	42,163	1,016,739	17.47%
Resource Management	88,449	309,006	271,818	29,571	242,224	107,358	49,617	470	32,850	325,547	77,171	21,482	1,555,564	26.73%
Industrial Use	58	6,470	628	0	140	0	0	0	0	3,927	1,068	0	12,290	0.21%
Wilderness	0	326,819	57,099	0	437,052	134,015	4,244	0	0	49,717	62,289	0	1,071,236	18.41%
Canoe Area	0	0	17,616	0	0	0	0	0	0	0	0	0	17,616	0.30%
Primitive	952	21,327	420	0	13,740	70	0	0	0	8,602	101	0	45,212	0.78%
Wild Forest	49,816	175,146	155,859	74,684	313,653	207,522	50,480	6,479	14,443	93,956	126,787	21,392	1,290,216	22.17%
Intensive Use	329	6,554	1,744	290	2,136	1,392	0	0	5	272	6,358	279	19,358	0.33%
Historic	0	495	0	0	0	0	0	0	0	0	0	0	495	0.01%
State Administrative	729	316	360	0	116	0	0	0	0	10	0	0	1,532	0.03%
Pending Classification	3	182	17,934	0	101	1,492	1,834	0	0	7,837	0	294	29,676	0.51%
Water	19,442	76,580	41,235	23,119	58,798	28,346	4,579	718	9,991	28,474	39,933	3,332	334,545	5.75%
County Total	326,832	1,224,583	735,661	203,246	1,156,129	558,850	164,865	16,501	148,808	623,071	559,613	101,951	5,820,111	

- These statistics were generated from the Adirondack Park Agency *land classification* geographic information system database. The source maps digitized were 1:24,000 scale (one inch equals two thousand feet) NYS DOT planimetric by boundaries, property boundaries, and various setbacks from any of these features. In some cases, property boundaries were plotted at 1:24,000 scale from county tax maps or survey maps by APA cartographers.
- Please keep in mind that although acreage figures are shown down to one acre accuracy, the width of a pencil line on a 1:24,000 scale map is approximately 50 feet on the ground.
- County acreage totals are for in-park portions of the counties. Only Essex and Hamilton counties are wholly within the Adirondack Park.
- More information about land use area classifications can be found in the [Adirondack Park Agency Act](#).
- If you have a color monitor and it's set to at least 256 colors, the background colors for the land use classifications correspond to those found on the Adirondack Park Land Use and Development Plan Map published by the APA.

Parkwide acreage totals as of August 2000:	Private	3,010,226	51.7%
	State	2,475,340	42.5%
	Water	<u>334,545</u>	5.8%
	Total Park	5,820,111	

2021 Land Classification Statistics Application

2021 Adirondack Land Classification Acreage Statistics - NYS Adirondack Park Agency



Select the park, county, town, or village of interest to view acreage statistics.

Filter by municipality type:
None

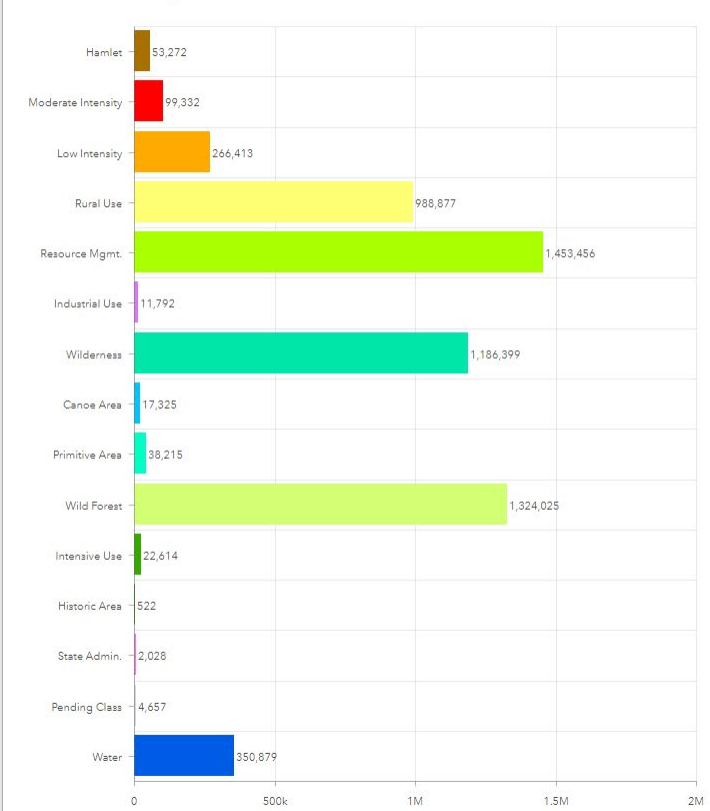
Filter by county name:
None

Select an area:

- Adirondack Park
- Clinton County
- Essex County
- Franklin County
- Fulton County
- Hamilton County

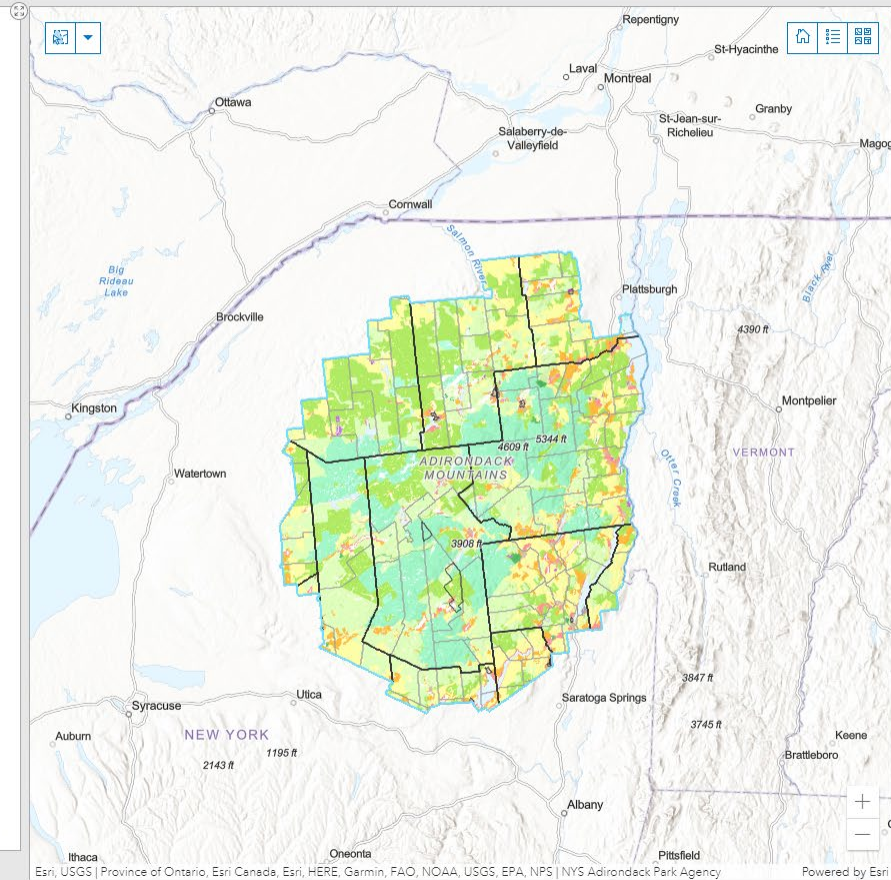
Reset

Land Classification Acreage of selected area



About Adirondack Land Classification

Land Class Private State State/Private Total Acres



Esri, USGS | Province of Ontario, Esri Canada, Esri, HERE, Garmin, FAO, NOAA, USGS, EPA, NPS | NYS Adirondack Park Agency Powered by Esri

2021 Adirondack Land Classification Acreage Statistics - NYS Adirondack Park Agency

Select the park, county, town, or village of interest to view acreage statistics.

Filter by municipality type:
None

Filter by county name:
None

Select an area:

Adirondack Park

• Essex County

Franklin County

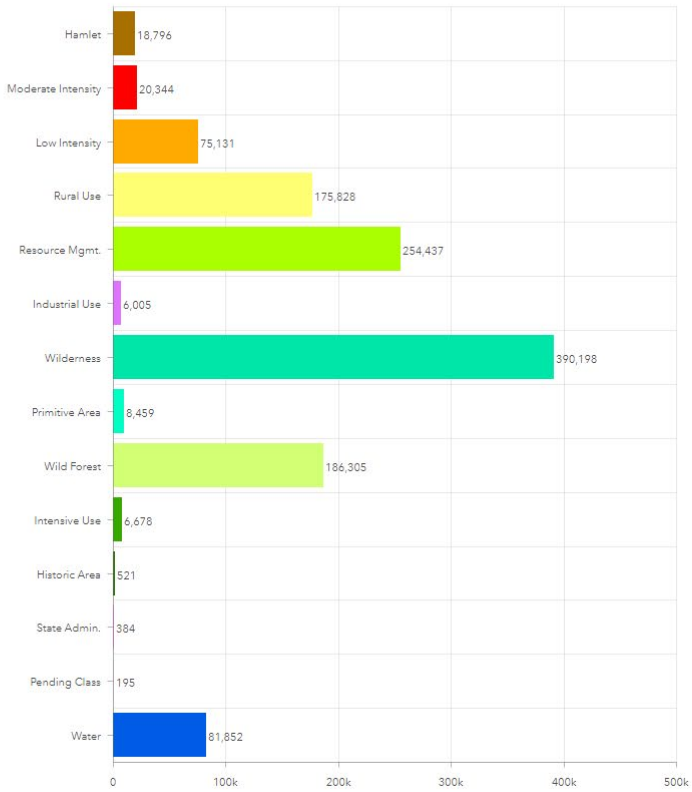
Town of Harrietstown

• Town of North Elba

Town of Saint Armand

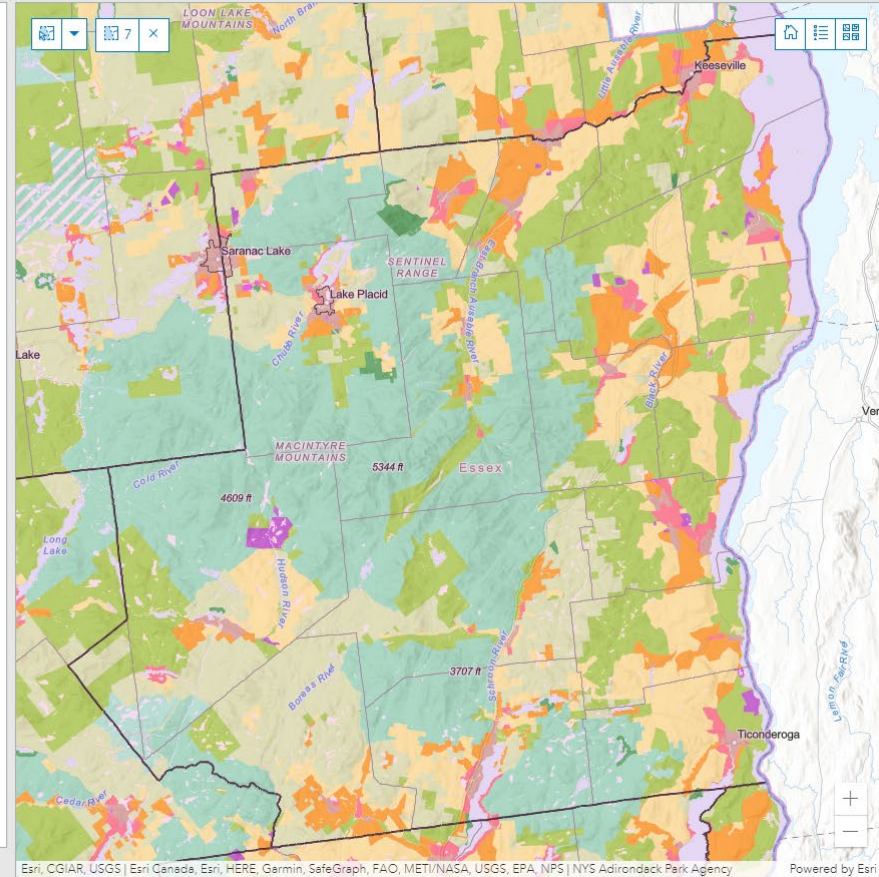
Reset

Land Classification Acreage of selected area



About Adirondack Land Classification

Land Class Private State State/Private Total Acres



Esri, CGIAR, USGS | Esri Canada, Esri, HERE, Garmin, SafeGraph, FAO, METI/NASA, USGS, EPA, NPS | NYS Adirondack Park Agency Powered by Esri

2021 Adirondack Land Classification Acreage Statistics - NYS Adirondack Park Agency

Select the park, county, town, or village of interest to view acreage statistics.

Filter by municipality type:
None

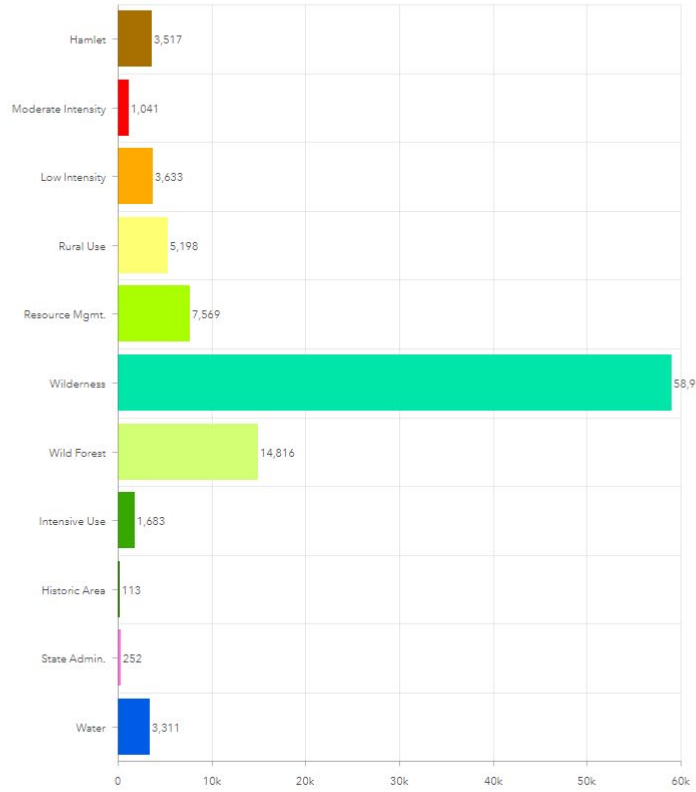
Filter by county name:
None

Select an area:

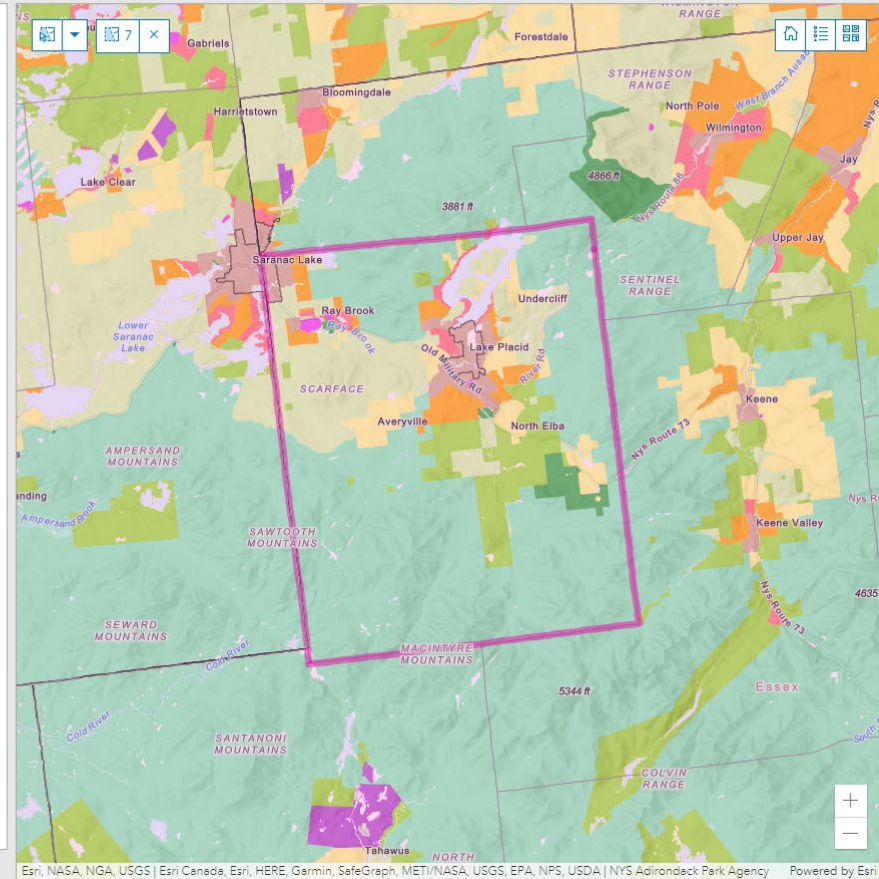
- Adirondack Park
- Essex County
- Franklin County
- Town of Harrietstown
- Town of North Elba**
- Town of Saint Armand

Reset

Land Classification Acreage of selected area



Land Class Private State State/Private Total Acres



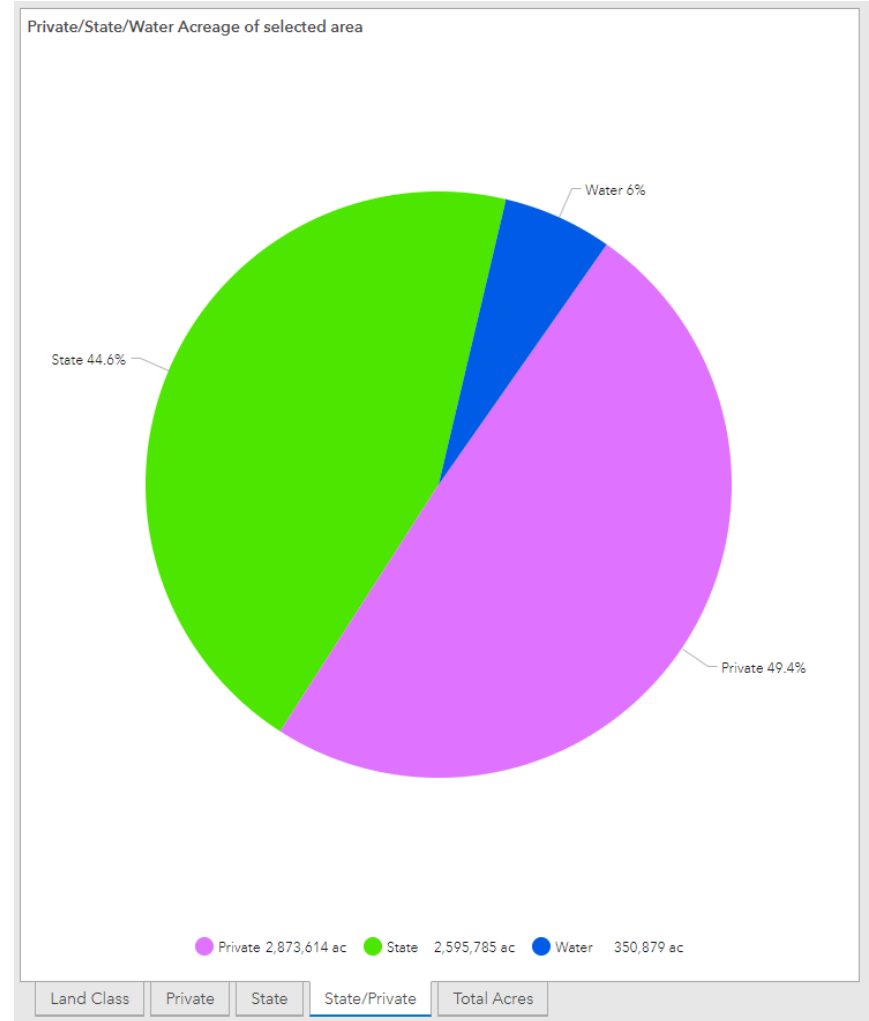
2000 – 2021 Statistics Comparison

Parkwide acreage totals as of **August 2000**:

Private	3,010,226	51.7%
State	2,475,340	42.5%
Water	334,545	5.8%
Total Park	5,820,111	

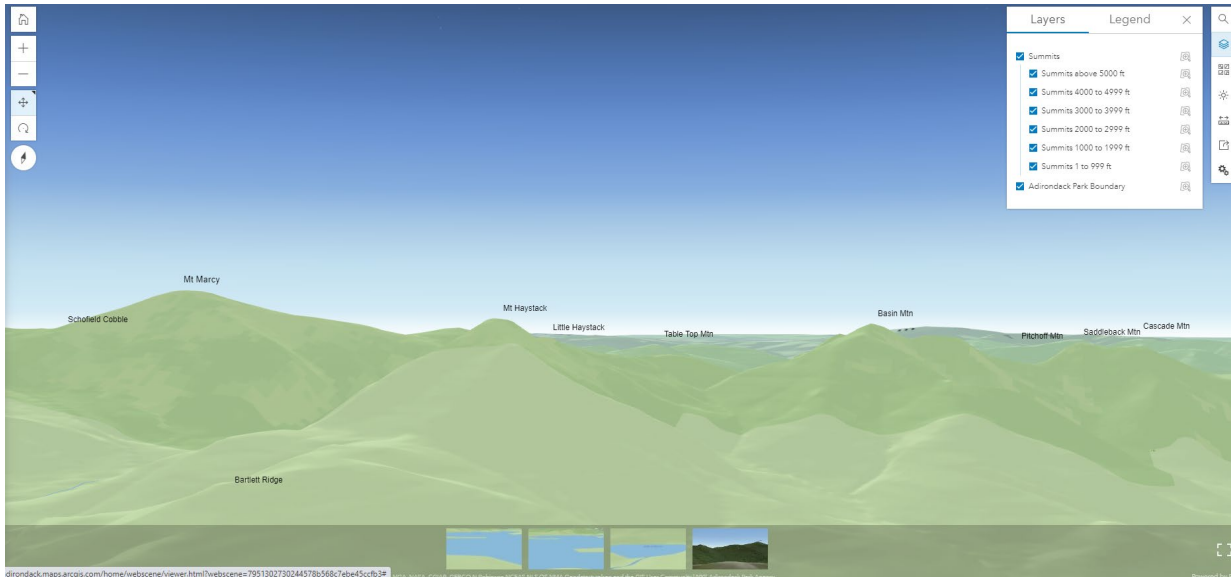
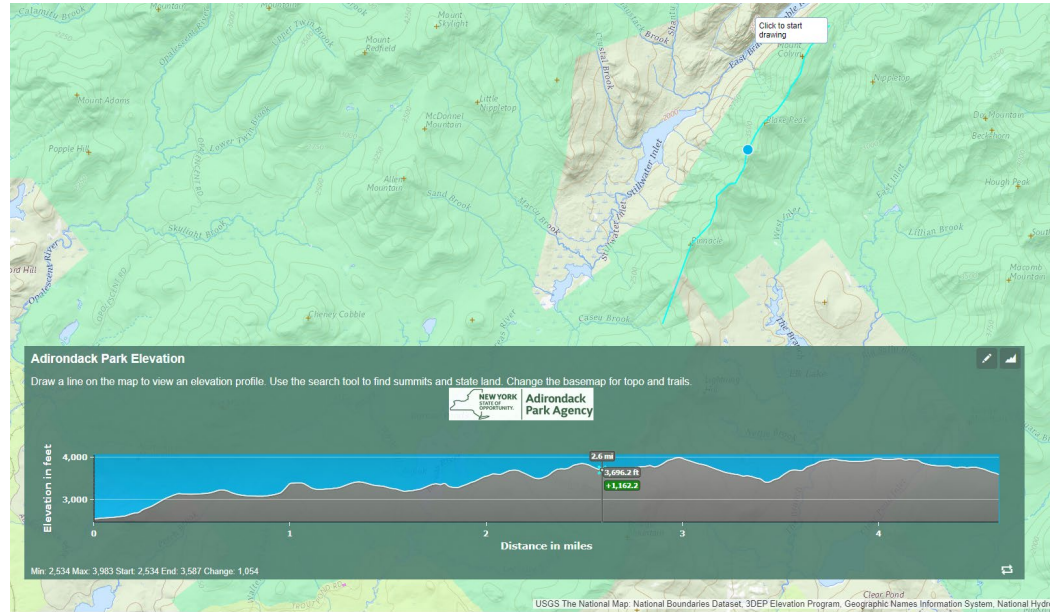
Parkwide acreage totals as of **June 2021**:

Private	2,873,614	49.4%
State	2,595,785	44.6%
Water	350,879	6%
Total Park	5,820,313	



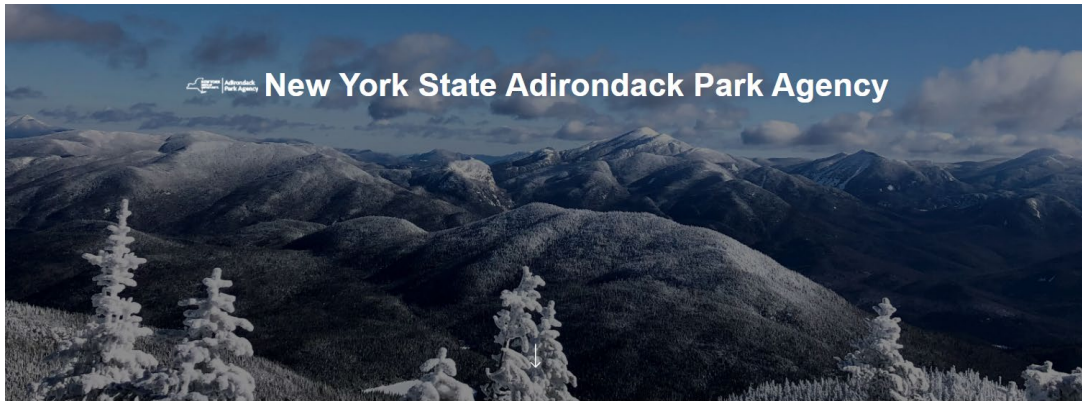
Note Worthy Applications

Elevation profile tool, and summit viewer application.



Other Applications...

More applications and mapping resources hosted publicly by the Adirondack Park Agency on our website and on ArcGIS Online.



<https://www.apa.ny.gov/gis/index.html>

The **Adirondack Park Agency (APA)** created in 1971 by the New York State Legislature to develop long-range land use plans for both public and private lands within the boundary of the Park. The APA is a New York State governmental agency.

The Adirondack Park was created in 1892 by the State of New York. Today the Park is the largest publicly protected area in the contiguous United States, larger than Yellowstone, Everglades, Glacier, and the Grand Canyon combined. The Adirondack Park encompasses

<https://adirondack.maps.arcgis.com/home/index.html>

2021 Adirondack Land Classification Acreag...
by John.Barge@apa.ny.gov_adirondack
Created: Dec 15, 2021
Updated: Feb 3, 2022
View Count: 146

2020 Census Adirondack Park Housing Viewer
by John.Barge@apa.ny.gov_adirondack
Created: Oct 27, 2021
Updated: Jan 7, 2022
View Count: 208

2020 Census Adirondack Park Demographic ...
by John.Barge@apa.ny.gov_adirondack
Created: Oct 27, 2021
Updated: Feb 3, 2022
View Count: 229

2020 Census Adirondack Park Group Quarte...
by John.Barge@apa.ny.gov_adirondack
Created: Oct 27, 2021
Updated: Jan 31, 2022
View Count: 234

State Land Map Viewer of the Adirondack Park
by jwbarge
Created: Mar 21, 2018
Updated: Apr 13, 2018

Adirondack Park Municipal Land Class Statist...
by John.Barge@apa.ny.gov_adirondack
Created: Dec 3, 2021
Updated: Jan 4, 2022

North Elba Town Screening
by jwbarge
Created: Dec 15, 2017
Updated: Dec 18, 2019

Adirondack Park Boundary Polygon
by John.Barge@apa.ny.gov_adirondack
Created: May 13, 2021
Updated: Dec 28, 2021

Thank you!

Questions?