



New York State
Adirondack
Park Agency

Lake George Battlefield Park Intensive Use Area

2024 Amendment to the 1981 Lake George Beach and Battlefield Park UMP

January 9, 2024

Adirondack Park State Land Master Plan Conformance Review



Lake George Battlefield Park UMP Amendment



10/26/2023, 1:56:14 PM

This is advisory only, not to be used to confirm exact boundary location or for determining Agency jurisdiction.

1:18,056

- | | | |
|----------------|----------------------|------------------------|
| Park Boundary | Wild Forest | Pending Classification |
| SLMP | Intensive Use | |
| Wilderness | Historic | |
| Canoe Area | State Administrative | |
| Primitive Area | | |

Coordinate System: WGS 1984 Web Mercator Auxiliary Sphere

NYS Adirondack Park Agency
NYS ITS Geospatial Services



New York State
Adirondack
Park Agency

Guidelines for Management and Use – Basic Guidelines (SLMP pg. 41)

Primary management guideline will be to provide:

- public opportunities for recreation
- in a setting and scale in harmony with the relatively wild and undeveloped character of the Adirondack Park



Guidelines for Management and Use – Basic Guidelines (SLMP pg. 41)

All intensive use facilities should be located, designed and managed:

- to blend with the Adirondack environment;
- to have minimum adverse impact on surrounding state and private lands



Guidelines for Management and Use – Basic Guidelines (SLMP pg. 41 & 42)

Construction and development activities will:

- avoid material alteration of wetlands;
- minimize extensive topographic alterations;
- limit vegetative clearing;
- preserve the scenic, natural and open space resources of the intensive use area.



Special Management Guidelines (SLMP pg. 57)

- Major land classification reflects the minimum management constraints (e.g., Intensive Use Area)
- Certain parcels of land often require special management to reflect unusual resource or public use factors.



Photo: The Sagamore Institute of the Adirondacks
<https://www.sagamore.org/powerhouse-trail>



Special Management Guidelines (SLMP pg. 57)

- Examples of these unique land parcels:
 - scenic areas, places of geologic interest providing information on the formation of the Adirondacks or unusual mineral deposits or rock formations
 - historic buildings, structures or sites not part of a designated historic area
 - nature preserves, such as habitats of rare, threatened or endangered species of plants or wildlife where protection to prevent overuse or destruction of a unique resource may be required
 - lakes and ponds whose size, character, inaccessibility, or fishery resources require special protective measures



Special Management Guidelines (SLMP pg. 57)

- Special interest areas will receive appropriate publicity and particular attention will be given to interpretive signing.
- Where overuse or destruction of unique and fragile resources is a threat, special measures will be taken to protect their integrity, such as prohibiting motorized access to the area, where such access would otherwise be allowed, re-routing foot and horse trails, or discouraging overnight camping to reduce public pressures.



SPECIAL MANAGEMENT AREAS

Illustrative Special Interest Areas

SCENIC

Ampersand Mountain Summit
 Arab Mountain Summit
 Azure Mountain Summit
 Bald (Rondaxe) Mountain Summit
 Bar Mountain Summit
 Black Mountain Peak
 Blue Mountain Summit
 Bog River Falls
 Bushnell's Falls
 Buttermilk Falls
 Cascade Falls
 East Canada Falls
 Falls Brook
 Fort Noble Mountain
 Hadley Mountain Summit
 Hanging Spear Falls
 High Falls
 Historic Great Camps
 Hurricane Mountain Summit
 Indian Falls
 Kane Mountain Summit
 Miller's Falls
 Opalescent Flume
 Paradise Bay
 Poke-O-Moonshine Summit
 Prospect Mountain
 Pulpit Rock
 Raquette Falls
 Red Rock Bay
 Rocky Falls
 St. Regis Mountain Summit
 Sleeping Beauty
 Sliding Rock Falls
 Twitchell Creek Gorge
 Vanderwhacker Mountain Summit
 Wakely Mountain Summit
 Wanika Falls
 Whiteface Mountain Summit

GEOGRAPHICAL

AuSable River Delta
 Balanced Rock
 Chimney Mountain
 Colden Dike
 Giant Mountain Slides
 Ice Cave Mountain
 McComb Mountain Slide
 Moose River Rock Dam
 Rainbow Lake Esker
 Rogers Rock
 Round Mountain Exfoliating Dome
 Six Mile Creek Esker

HISTORIC

Axton Plantation
 Burnt Shanty Clearing
 Fort George & Battleground
 French Louie's Camp
 Historic Great Camps
 Mother Johnson's Boarding House
 Long Lake–Round Pond Canal
 Prospect Mountain Inclined R.R.
 Riparius Bridge
 Rondeau's Hermitage
 Roosevelt Plaque
 Scott's Pond Lumber Dam
 Scott Clearing and Lumber Dam
 Lake Stevens Flume Route
 Valcour Island

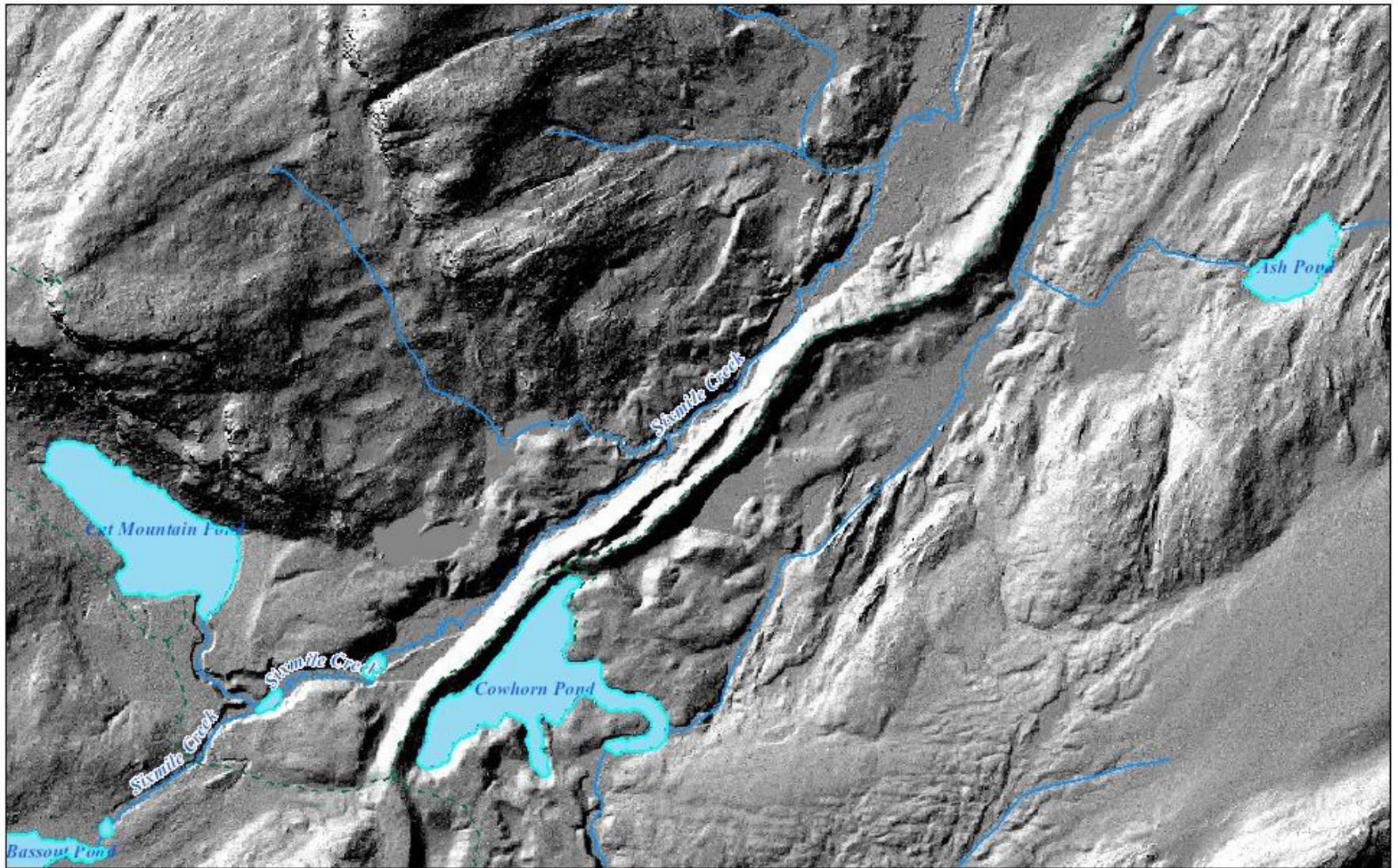
NATURAL

Baxter Mountain
 Bloomingdale Bog
 Boreas Hardwood
 Buckhorn Lake Hardwoods
 Chubb River Marsh
 Church Pond
 Five Ponds Esker
 Griffin Rapids Virgin Timber
 The Gulf





Six Mile Creek Esker - Five Ponds Wilderness



ArcGIS – NYS Hillshade – 1 Meter DEM





Lake George Battlefield Park UMP Amendment



10/26/2023, 1:59:10 PM This is advisory only, not to be used to confirm exact boundary location or for determining Agency jurisdiction.

1:2,257

Elevation Contours - 20 foot

- 20 foot contour
- 100 foot contour

Coordinate System: WGS 1984 Web Mercator Auxiliary Sphere

NYS Adirondack Park Agency
NYS ITS Geospatial Services



New York State
Adirondack
Park Agency



NE View of Proposed Reinterment Site from Fort George Rd, Lake George Battlefield Park, [Google Street View](#), Aug 2023





E View of Proposed Reinterment Site from Fort George Rd, Lake George Battlefield Park, [Google Street View](#), Aug 2023





SE View of Proposed Reinterment Site from Fort George Rd, Lake George Battlefield Park, [Google Street View](#), Aug 2023





NW View of Proposed Reinterment Site from Fort George Rd, Lake George Battlefield Park, [Google Street View](#), Aug 2023



Lake George Battlefield Park UMP Amendment



10/26/2023, 2:01:19 PM

This is advisory only, not to be used to confirm exact boundary location or for determining Agency jurisdiction.

1:2,257

- | | | |
|-------------------------------------|--------------------------------|-----------------------|
| Linear Wetlands | Deep Water Marsh | North Elba PVT Land |
| Wetland Areas | APA Regulatory Linear Wetlands | Harrietstown PVT Land |
| APA Regulatory Wetland Areas | Franklin PVT Land | Chester PVT Land |
| Wetland | | |

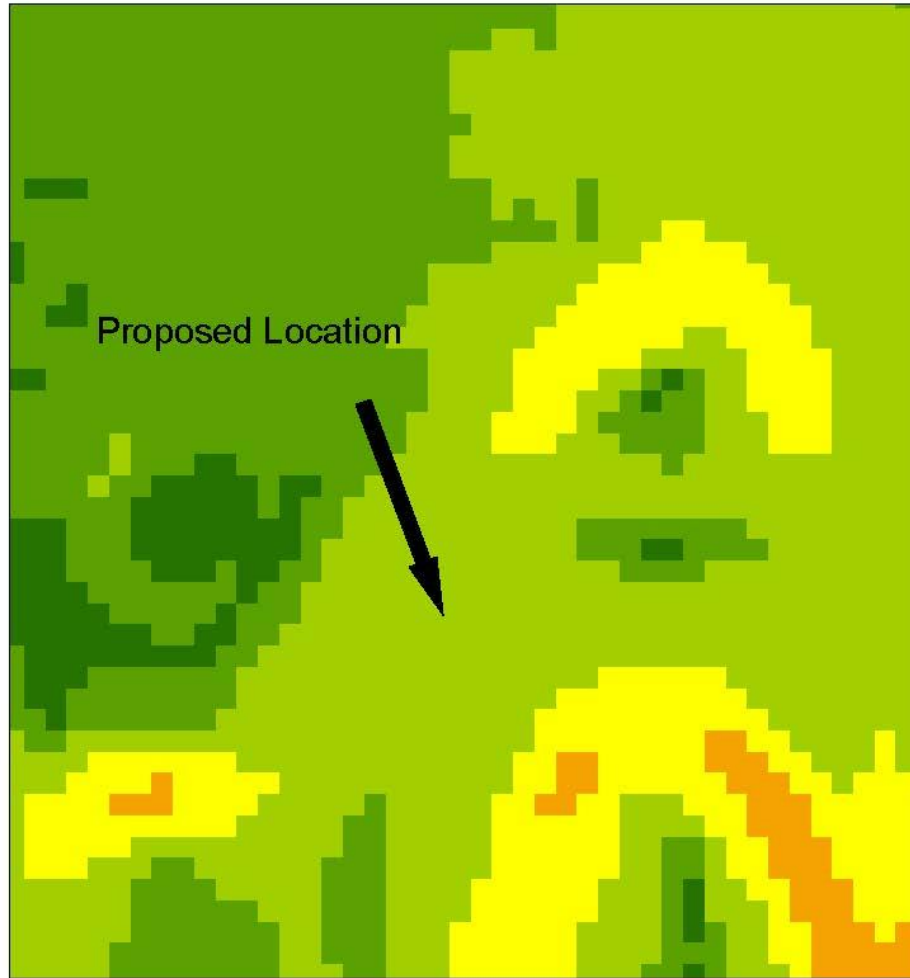
Coordinate System: WGS 1984 Web Mercator Auxiliary Sphere

NYS Adirondack Park Agency
NYS ITS Geospatial Services



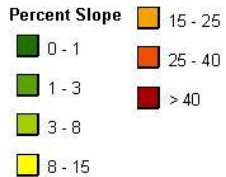
New York State
Adirondack
Park Agency

Lake George Battlefield Park UMP Amendment



10/26/2023, 2:00:12 PM This is advisory only, not to be used to confirm exact boundary location or for determining Agency jurisdiction.

1:2,257



Coordinate System: WGS 1984 Web Mercator Auxiliary Sphere

NYS Adirondack Park Agency
NYS ITS Geospatial Services



New York State
Adirondack
Park Agency

New York Natural Heritage Program



Ram's Head Lady's Slipper
Cypripedium arietinum plant
Stephen M. Young

<https://guides.nynhp.org/rams-head-ladys-slipper/>



DEC & APA Joint Public Comment Period

DEC and APA will be accepting comments until Monday, February 19th, 2024 regarding the public draft of the Lake George Beach and Battlefield Park UMP amendment.

Comments may be relayed to:

Megan Phillips
NYSAPA
Deputy Director, Planning
PO Box 99
1133 State Route 86
Ray Brook, NY 12977
Phone: (518) 891-4050
Email:
SLMP_UMP_Comments@apa.ny.gov
(underscores between words)

Charles E. Vandrei
Agency Historic Preservation Officer
NYS Department of Environmental
Conservation
Office of Indian Nation Affairs
625 Broadway, Albany, NY 12233-
1500
Email: OINA@dec.ny.gov
Phone: (518) 402-3543

