



**Adirondack  
Park Agency**

# **2023-24 State Land Classification Package**

**Final Supplemental  
Environmental Impact Statement**

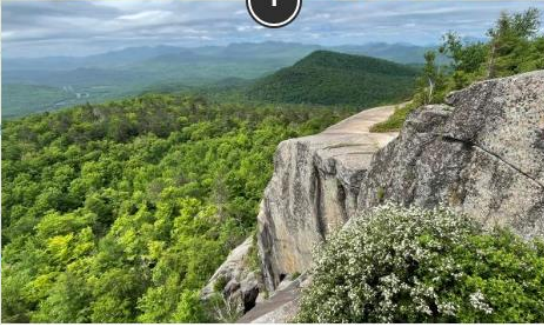
**January 10, 2024**

# Presentation Outline

- Review action
- Summarize public engagement process
- Discuss public comments received and Agency response
- Review changes from DSEIS to FSEIS
- Answer questions from board members
- Board to consider draft resolution

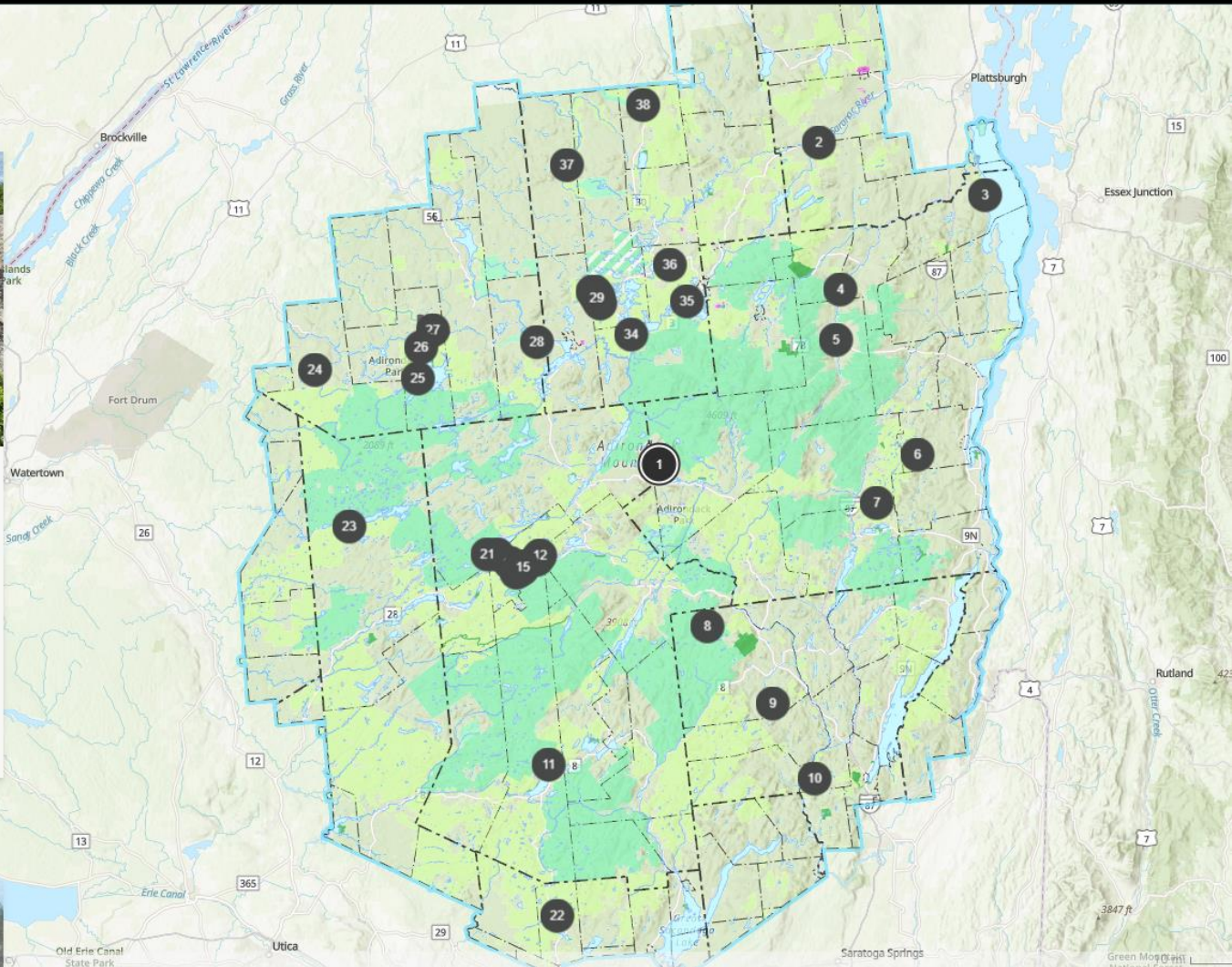
# Summary of the Action

- Acquisitions, corrections, and reclassifications
  - Acquisitions – 19
  - Corrections – 6
    - 25 classification proposals totaling approximately 5,800 acres*
  - Reclassifications – 11
    - totaling approximately 250 acres*



### Adirondack Park

The Adirondack Park was created in 1892 by the State of New York amid concerns for the water and timber resources of the region. Today the Park is the largest publicly protected area in the contiguous United States.



<https://tinyurl.com/landclasstorymap>

# Final Supplemental Environmental Impact Statement (FSEIS)

- FSEIS is a supplement to the Final Programmatic Environmental Impact Statement – Guidelines for Amending the Adirondack Park State Land Master Plan
- Type I vs Type II actions (from FPEIS and regs):
  - Type I actions include, but are not limited to:
    - Classification of any new acquisition to wilderness, primitive or canoe if the parcel is 5,000+ acres and/or contains extensive facilities
    - **Reclassification from a more restrictive classification to a less restrictive classification**
    - Designation of a new travel corridor
    - Material changes to the guidelines applicable to each classification
  - Type II actions include:
    - Any amendments to the APSLMP not listed as a Type I action in APA regulations (9 NYCRR 586.5(a)(6)(i))

# Final Supplemental Environmental Impact Statement (FSEIS)

- 8 reclassification proposals from a more restrictive to a less restrictive land classification
  - 4 parcels – Wild Forest to Intensive Use
    - FR-6-A, FR-6-C, FR-6-D (Rollins Pond)
    - HA-6-A (Golden Beach)
  - 1 parcel – Wilderness to Intensive Use
    - HA-6-B (Golden Beach)
  - 3 parcels – Wild Forest to State Administrative
    - FR-1 (Horseshoe Pond)
    - FR-3 (DEC Storage Area)
    - FR-4 (DEC Housing)



# Public Engagement Opportunities

## PUBLIC HEARINGS:

November 1, 2023 – 9:30am-11:30am  
Virtual Hearing

<https://tinyurl.com/APAClassPkg>

1-518-549-0500 Access code: 2331 477 3001

November 1, 2023 – 5:30-7:30pm  
Adirondack Park Agency Board Room  
1133 NYS Route 86  
Ray Brook, NY 12977

November 13, 2023 – 5:00-7:00pm  
Dept. of Environmental Conservation  
Public Hearing Room, 1st Floor  
625 Broadway  
Albany, NY 12233

## PUBLIC COMMENT PERIOD:

October 13 – November 27, 2023

Megan Phillips  
NYSAPA

Deputy Director, Planning  
PO Box 99

1133 State Route 86  
Ray Brook, NY 12977

Email: [SLMP\\_UMP\\_Comments@apa.ny.gov](mailto:SLMP_UMP_Comments@apa.ny.gov)  
(underscores between words)

# Public Comments

- Support for additional state land acquisitions.
- Some reclassifications at Rollins Pond are proposed based on existing uses, need for consistency in treatment of boat launches.
- Praise for the online interactive story map.
- Ensure alignment with State's climate goals, support for wetlands and endangered species protection.
- Consider certain parcels for more restrictive land classifications (ES-4 Tub Mill Pond, SL-2 Grass River Corridor, WR-2 Huckleberry Mountain in Johnsburg – coupled with Crane Mountain).
- Consider more active management at the Huckleberry/Crane Mountain site (WR-2), as there are some visitor use problems occurring.



# Public Comments Continued

- FR-3 DEC Storage – classify the wetland covered areas as Wild Forest not State Administrative.
- Keep FR-6-C and FR-6-D as Wild Forest at Rollins Pond, extend FR-6-D boundary to the creek.
- For FR-6-B, find a natural landscape contour to use as boundary rather than a straight line, or create a setback off of the campground road.
- Support for HA-6-D and HA-6-C (Golden Beach) reclassification from Intensive Use to Wild Forest, but HA-6-D boundary should begin 150 feet from the edge of the southernmost campsites.
- Support for map corrections and specific parcel classifications.

# FR-6 B, C, and D – Rollins Pond



Proposed Land Classification - 2023



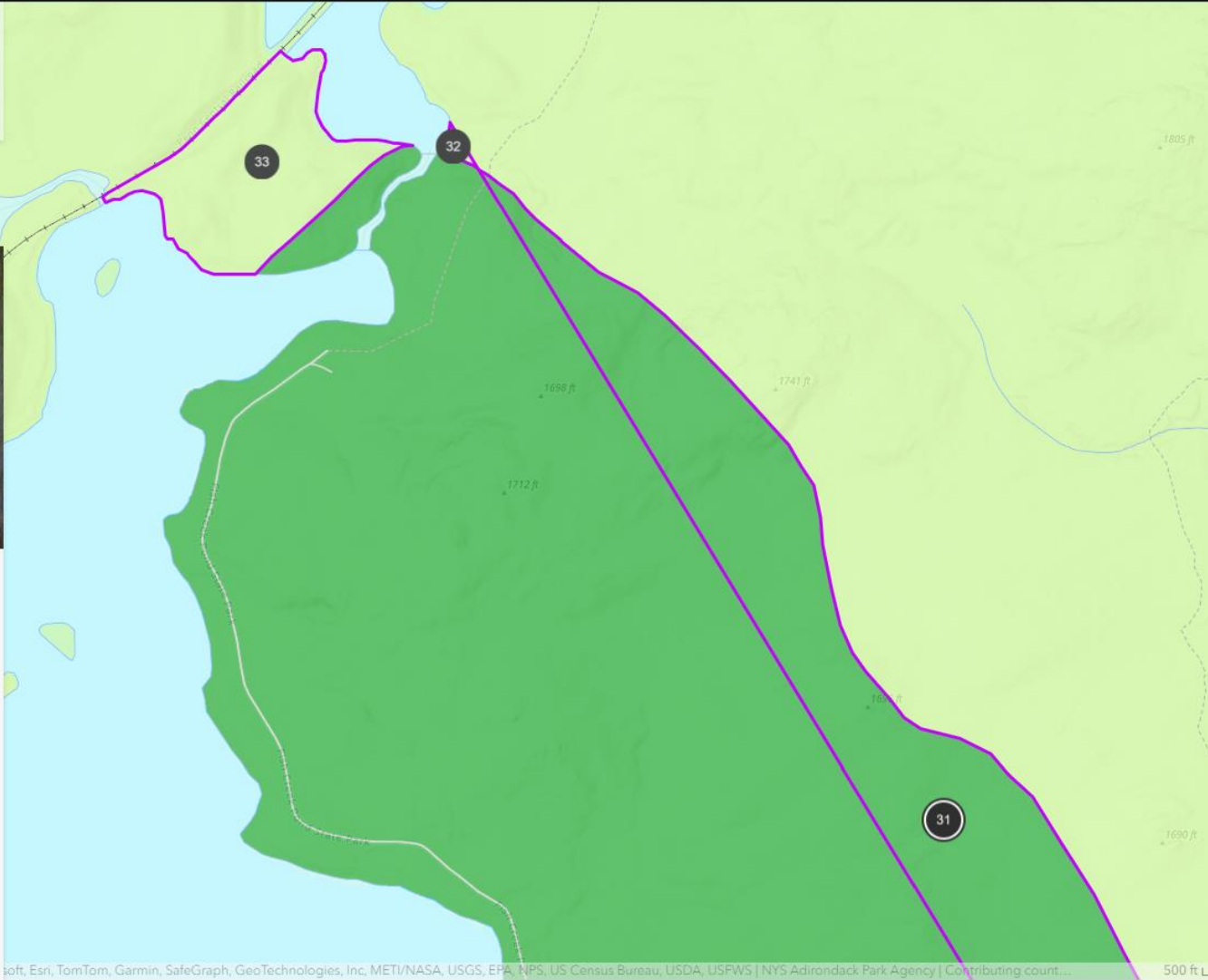
present on the site. Slopes in this area are generally less than 8% and soils are loamy fine sands.

31



## Rollins Pond (FR-6 B)

The northeastern boundary of the Rollins Pond Intensive Use area lies between ¼ and ½ mile away from the closest campground improvements. This relatively remote part of the Intensive Use area is undeveloped for recreational access apart from faint herd paths on the shore of Whey Pond and the Otter Hollow Foot trail which leaves from the north end of the campground into Saranac Lakes Wild Forest. To more clearly define the



# HA-6-D – Golden Beach



Proposed Land Classification - 2023



area would not be appropriate on this acreage. This boundary is drawn with a 100-foot setback from the road.

HA-3

Long Point

18

## Golden Beach HA - 6-D

This action proposes reclassifying 8.2 acres from the western end of the existing Intensive Use Area to be added to the Sargent Pond Wild Forest. The boundary is drawn roughly a quarter of a mile west of the last roadside campsite along NYS Route 28.

HA-6

17

15

14

16

19

18



Lakeshore Ct

South Lake

3rd Ave

Death Brook

28

# Next Steps

- Agency Board Resolution
  - Accept FSEIS
  - Recommend changes to the APSLMP to the Governor
- Draft resolution authorizes Executive Director to make non-substantive technical corrections to the FSEIS and prepare findings statement and decision
- Findings statement and decision to be issued 10 days after ENB notice
- APA Chair to relay recommendations for classification to the Governor



# Questions & Discussion

