

# Lake George Battlefield Park Intensive Use Area

2024 Amendment to the 1981 Lake George  
Beach and Battlefield Park UMP

April 18<sup>th</sup>, 2024

# Adirondack Park State Land Master Plan Conformance Review

### Lake George Battlefield Park UMP Amendment



10/26/2023, 1:56:14 PM

This is advisory only, not to be used to confirm exact boundary location or for determining Agency jurisdiction.

1:18,056

- |                |             |                        |
|----------------|-------------|------------------------|
| Park Boundary  | Wild Forest | Pending Classification |
| Intensive Use  | Wilderness  | State Administrative   |
| Canoe Area     | Historic    |                        |
| Primitive Area |             |                        |

Coordinate System: WGS 1984 Web Mercator Auxiliary Sphere

NYS Adirondack Park Agency  
NYS ITS Geospatial Services



# Guidelines for Management and Use – Basic Guidelines (SLMP pg. 41)

Primary management guideline will be to provide:

- public opportunities for recreation
- in a setting and scale in harmony with the relatively wild and undeveloped character of the Adirondack Park

# Guidelines for Management and Use – Basic Guidelines (SLMP pg. 41)

All intensive use facilities should be located, designed and managed:

- to blend with the Adirondack environment;
- to have minimum adverse impact on surrounding state and private lands

# Guidelines for Management and Use – Basic Guidelines (SLMP pg. 41 & 42)

Construction and development activities will:

- avoid material alteration of wetlands;
- minimize extensive topographic alterations;
- limit vegetative clearing;
- preserve the scenic, natural and open space resources of the intensive use area.

# Special Management Guidelines (SLMP pg. 57)

- Major land classification reflects the minimum management constraints (e.g., Intensive Use Area)
- Certain parcels of land often require special management to reflect unusual resource or public use factors.



# Special Management Guidelines (SLMP pg. 57)

- Special interest areas will receive appropriate publicity and particular attention will be given to interpretive signing.
- Where overuse or destruction of unique and fragile resources is a threat, special measures will be taken to protect their integrity, such as prohibiting motorized access to the area, where such access would otherwise be allowed, re-routing foot and horse trails, or discouraging overnight camping to reduce public pressures.



### Lake George Battlefield Park UMP Amendment



10/26/2023, 1:59:10 PM This is advisory only, not to be used to confirm exact boundary location or for determining Agency jurisdiction.

1:2,257

#### Elevation Contours - 20 foot

- 20 foot contour
- 100 foot contour

Coordinate System: WGS 1984 Web Mercator Auxiliary Sphere

NYS Adirondack Park Agency  
NYS ITS Geospatial Services







NE View of Proposed Reinterment Site from Fort George Rd, Lake George Battlefield Park, [Google Street View](#), Aug 2023





E View of Proposed Reinterment Site from Fort George Rd, Lake George Battlefield Park, [Google Street View](#), Aug 2023





SE View of Proposed Reinterment Site from Fort George Rd, Lake George Battlefield Park, [Google Street View](#), Aug 2023





NW View of Proposed Reinterment Site from Fort George Rd, Lake George Battlefield Park, [Google Street View](#), Aug 2023

### Lake George Battlefield Park UMP Amendment



10/26/2023, 2:01:19 PM

This is advisory only, not to be used to confirm exact boundary location or for determining Agency jurisdiction.

1:2,257

- |                                     |                                |                       |
|-------------------------------------|--------------------------------|-----------------------|
| Linear Wetlands                     | Deep Water Marsh               | North Elba PVT Land   |
| Wetland Areas                       | APA Regulatory Linear Wetlands | Harrietstown PVT Land |
| <b>APA Regulatory Wetland Areas</b> | Franklin PVT Land              | Chester PVT Land      |
| Wetland                             |                                |                       |

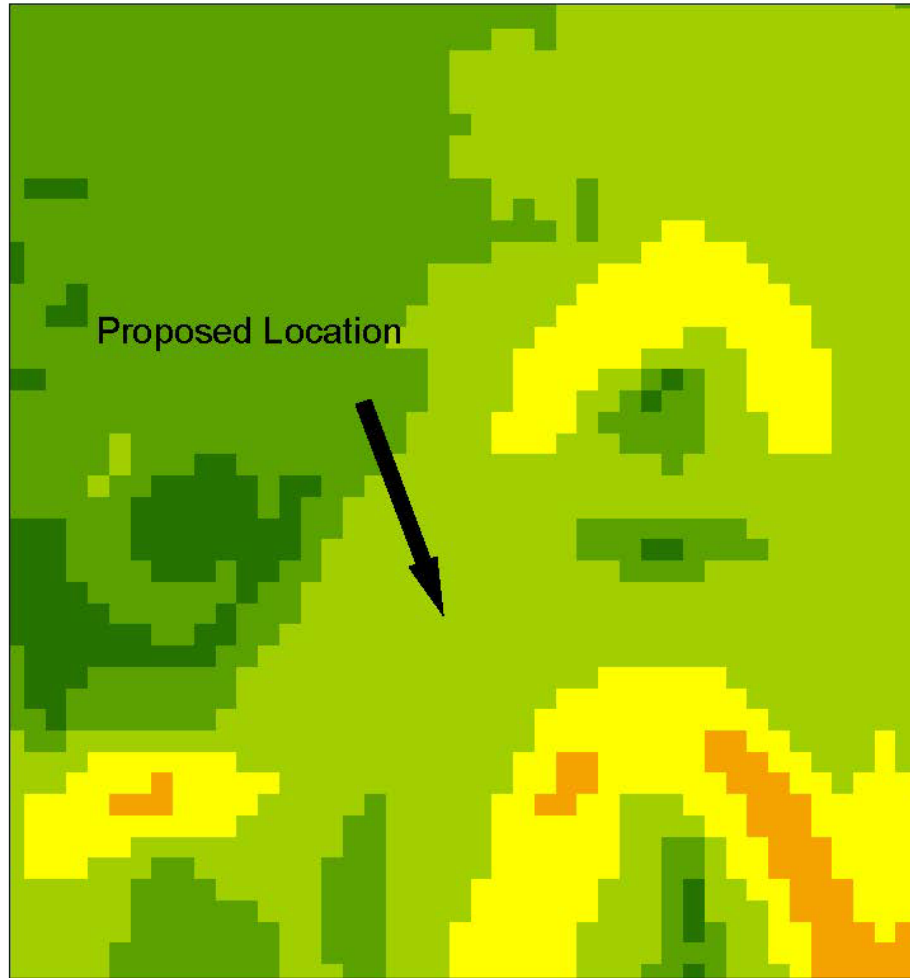
Coordinate System: WGS 1984 Web Mercator Auxiliary Sphere

NYS Adirondack Park Agency  
NYS ITS Geospatial Services





### Lake George Battlefield Park UMP Amendment



10/26/2023, 2:00:12 PM This is advisory only, not to be used to confirm exact boundary location or for determining Agency jurisdiction.

1:2,257



Coordinate System: WGS 1984 Web Mercator Auxiliary Sphere

NYS Adirondack Park Agency  
NYS ITS Geospatial Services

# Adirondack Park State Land Master Plan – Public Comments



# Staff Recommendation

It is the opinion of staff that the proposed final 2024 Lake George Beach and Battlefield Park Unit Management Plan Amendment conforms to the general guidelines and criteria of the Adirondack Park State Land Master Plan.

# Questions?