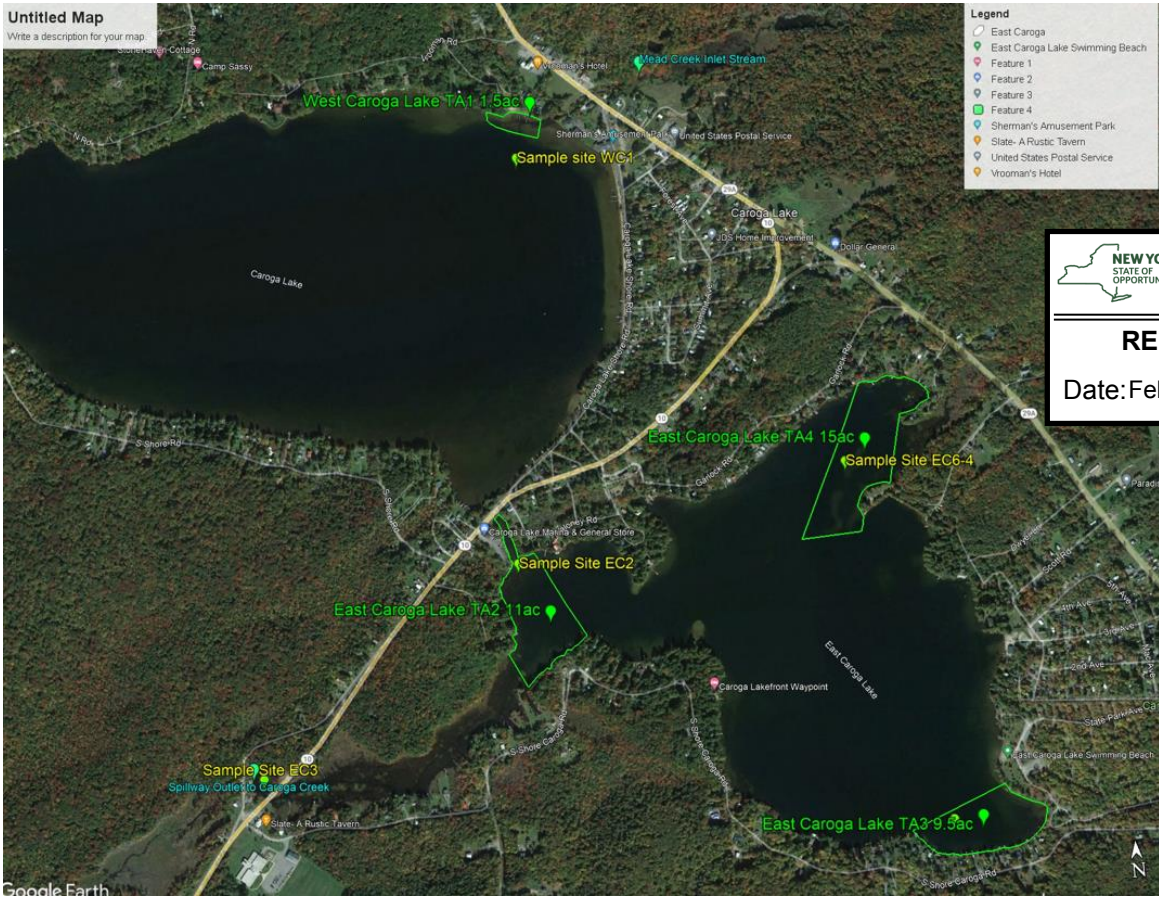


# East and West Caroga Lakes – 2024 ProcellaCOR EC Sampling Plan

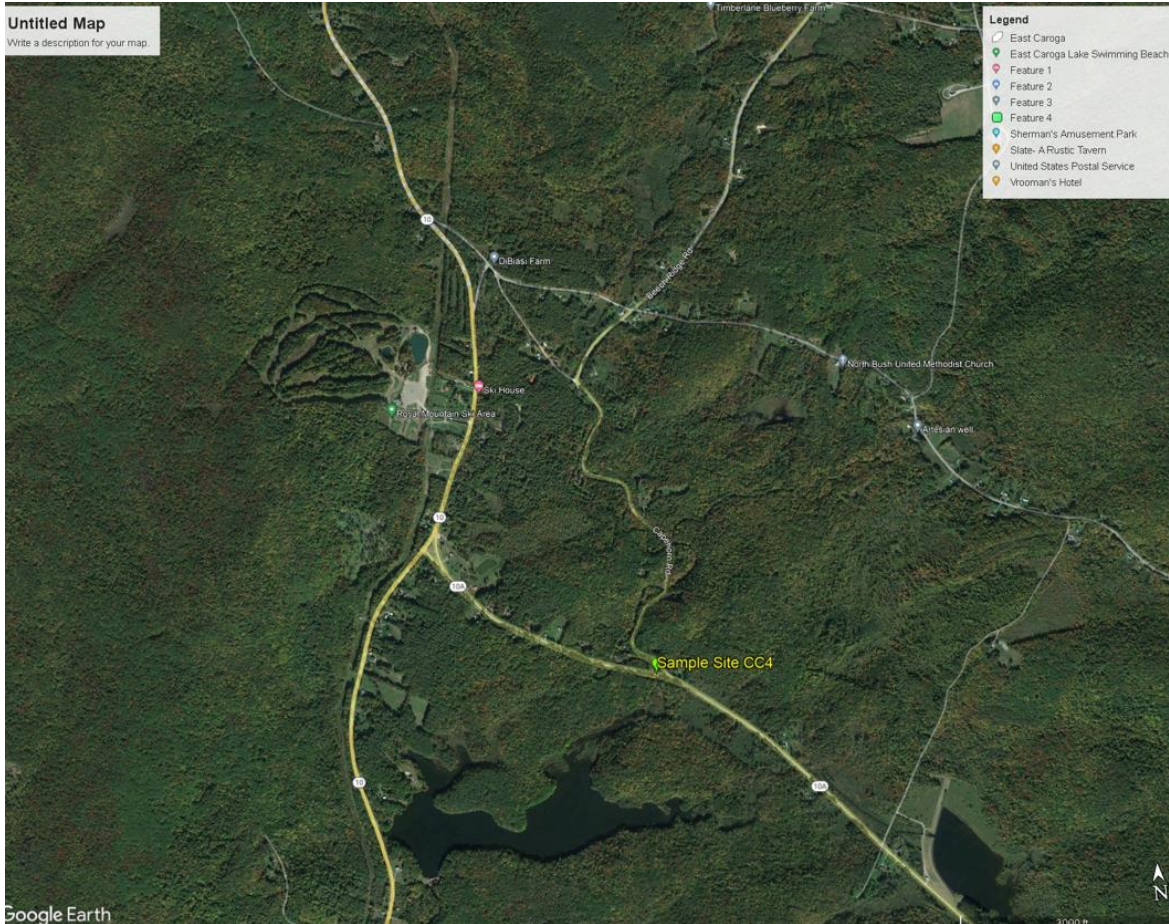


NEW YORK STATE OF OPPORTUNITY  
**Adirondack Park Agency**

---

**RECEIVED**

Date: February 15, 2024



### **Sample location coordinates**

Site WC1 - 43° 8'28.21"N, 74°29'4.61"W

Site EC2 - 43° 7'47.28"N, 74°29'23.69"W

Site EC3 - 43° 7'31.10"N, 74°29'55.13"W

Site CC4 - 43° 4'14.11"N, 74°29'32.68"W

Site EC5-3 - 43° 7'22.56"N, 74°28'36.18"W (only if TA3 is treated)

Site EC6-4 - 43° 7'53.42"N, 74°28'45.05"W (only if TA4 is treated)

### **Collection schedule**

After application, samples will be collected at each site on the following schedule:

6-8 hours, 1 day, 3 days and 7 days after treatment

Samples at each site will continue to be collected every 7-14 days until lab analysis confirms that the ProcellaCOR EC concentration is below 1 ppb in all of the samples. If results from all samples collected 3 days after application are below 1ppb, sampling will not be conducted 7 days after application. If only the downstream site returns a result at the 3 day sampling event, only that site will be resampled.

### **Sampling protocol**

The following manufacturer sampling protocol will be followed: For ProcellaCOR FasTEST use the clear glass vial to collect the sample. Submerge the bottle upside down until elbow deep. Cap the clear glass vial underwater. The contents of the clear vial should be transferred to the amber glass vial until completely filled to preserve the sample. Place the amber vial in bubble wrap sleeve to protect the glass vial during shipping, and overnight all samples to SePRO's SRTC lab in Whitakers, NC. If samples are collected on a Friday, store samples in a refrigerated area, and ship samples on Monday.

In addition to near surface samples, depth samples will be collected at all lake sites approximately 1' off the bottom. (Depth samples will be collected using a Kemerer or similar bottom sampler)

### **Cross-contamination prevention**

Each sample collected contains two bottles - one unpreserved bottle for collection and one preserved bottle for transfer and shipping. Once used, collection bottles are moved to a "spent bottle" container and not reused for other sample sites.

There is no method to prevent contamination of the boat hull when moving from site to site, and given the low herbicide concentration range, the possibility of boat contamination leading to a sample result of >1ppb can't be dismissed.