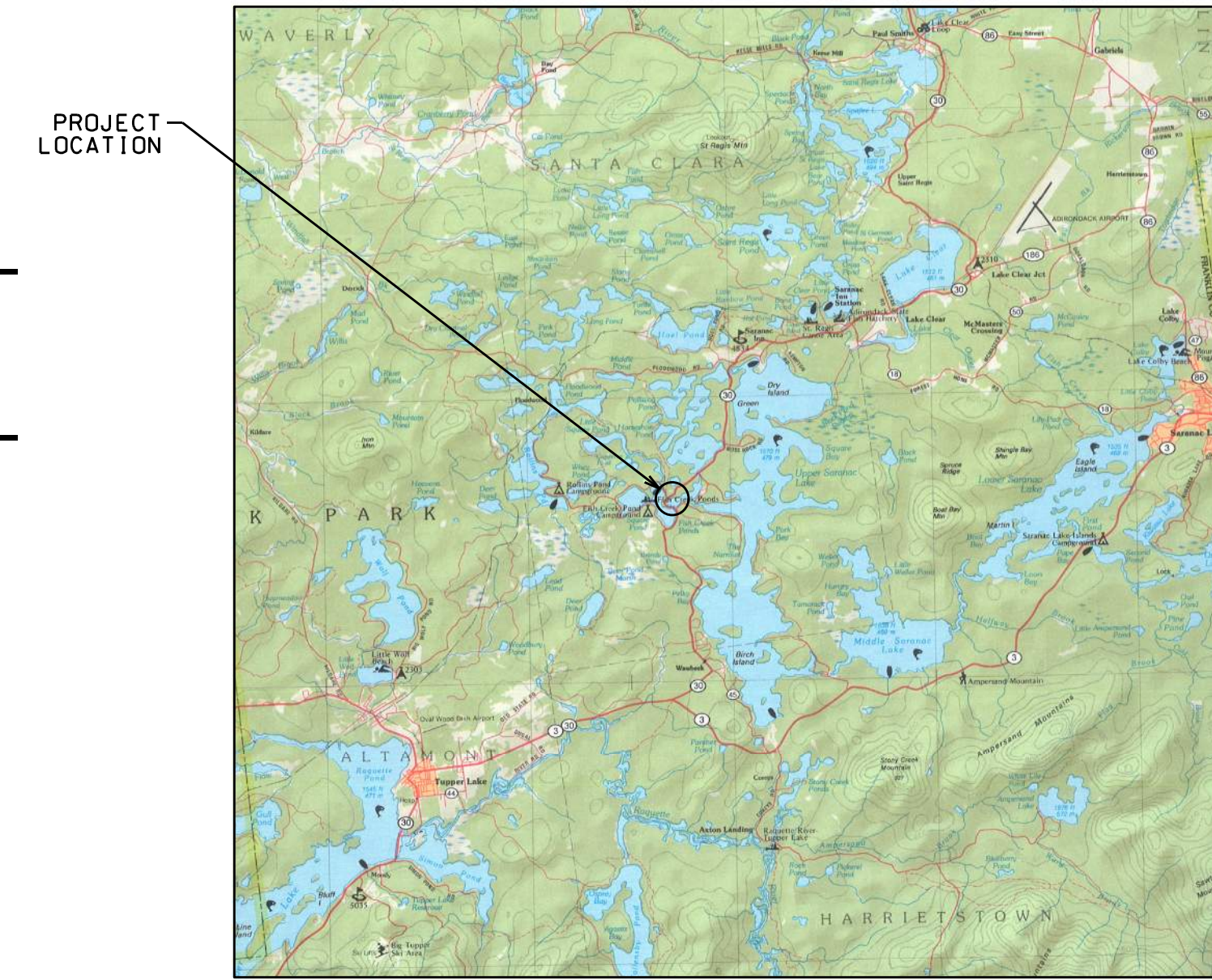


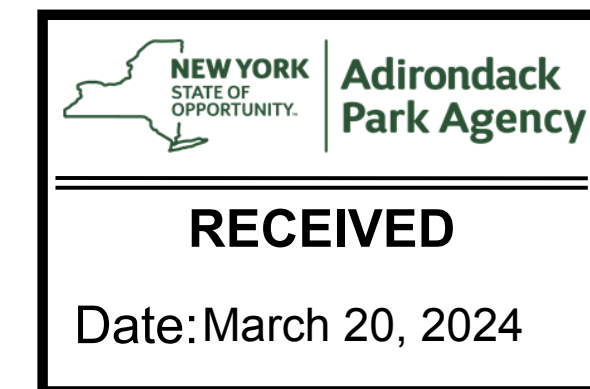
UPPER SARANAC MARINA

SANTA CLARA, NY

MARINA AND DOCK IMPROVEMENTS



LOCATION MAP
NTS



North Woods
Engineering PLLC

348 Lake Street
Saranac Lake, NY 12983
(518) 891-4975
www.north-woods-engineering.com

New York State Certified
Service-Without-Compromise



WARNING: IT IS A VIOLATION OF NEW YORK STATE LAW FOR ANY PERSON, UNLESS ACTING UNDER THE SUPERVISION OF A LICENSED PROFESSIONAL ENGINEER, TO ALTER AN ITEM IN ANY WAY. IF ALTERED, THE ALTERING ENGINEER SHALL AFFIX TO THE DOCUMENT THEIR SEAL AND THE NOTATION "ALTERED BY" FOLLOWED BY THEIR SIGNATURE AND THE DATE OF ALTERATION, AND A SPECIFIC DESCRIPTION OF THE ALTERATION.

USL MARINA, LLC
FISH CREEK PONDS, TOWN OF SANTA CLARA
4548 NYS ROUTE 30, SARANAC LAKE, NY, 12983

LIST OF ABBREVIATIONS

AB	ANCHOR BOLT	GA	GAUGE	SB	SETBACK
AESS	ARCHITECTURALLY EXPOSED	GALV	GALVANIZED	SC	SOLID CORE
AFF	STRUCTURAL STEEL	GC	GENERAL CONTRACTOR	SCHE	SCHEDULE
ALUM	ALUMINUM	HC	HOLLOW CORE	SEAL	CONCRETE SEALER
ALT	ALTERNATE	HORZ	HORIZONTAL	SE	SQUARE FOOT
APPROX	APPROXIMATE	HT	HEIGHT	SIM	SIMILAR
ARCH	ARCHITECTURAL	HT	HEIGHT	SPEC	SPECIFICATION
BM	BENCH MARK	IN	IN ACCORDANCE WITH	SO	SQUARE
BLDG	BUILDING	ID	INSIDE DIAMETER	SST	STAINLESS STEEL
BRK	BREAK	INC	INCLUDING	STD	STANDARD
BJ	BAR JOIST	INV	INVERT	STL	STEEL
CIP	CAST IN PLACE	LLH	LONG LEG HORIZONTAL	STR	STRUCTURAL
CJ	CONSTRUCTION JOINT	LLV	LONG LEG VERTICAL	T&B	TOP AND BOTTOM
CLR	CLEAR	MAT'L	MATERIAL	TO	TOP OF
CM	CONSTRUCTION MANAGER	MAS	MASONRY	TOBP	TOP OF BEAM POCKET
CMU	CONCRETE MASONRY UNIT	MAX	MAXIMUM	TOP	TOP OF
COL	COLUMN	MFR	MANUFACTURER	TOS	TOP OF SLAB
CONN	CONNECTION	MIN	MINIMUM	TOST	TOP OF STEEL
CONT	CONTINUOUS	MO	MASONRY OPENING	TOW	TOP OF WALL
CONTR	CONTRACTOR	MTL	METAL	TYP	TYPICAL
CY	CUBIC YARD	N	NORTH	UNO	UNLESS NOTED OTHERWISE
DIA	DIAMETER	NIC	NOT IN CONTRACT	UTIL	UTILITY
DIM	DIMENSION	NO	NUMBER	VB	VAPOR BARRIER
DN	DOWN	NOM	NOMINAL	VERT	VERTICAL
DO	DITTO	NTS	NOT TO SCALE	VIF	VERIFY IN FIELD
DTL	DETAIL	OC	ON CENTER	W	WEST
DWG	DRAWING	OD	OUTSIDE DIAMETER	W/O	WITHOUT
EC	ELECTRICAL CONTRACTOR	PSF	POUNDS PER SQUARE FOOT	W/W	WALL TO WALL
EJ	EXPANSION JOINT	PSF	POUNDS PER SQUARE FOOT	WWM	WELDED WIRE MESH
EL	ELEVATION	RP	RIGGING POINT	WS	WALL STEP
ES	EXPOSED STRUCTURAL	RAD	RADIUS		
ETR	EXISTING TO REMAIN	REIN	REINFORCED/REINFORCEMENT		
EW	EACH WAY	REQ	REQUIRED		
EXIST	EXISTING	REV	REVISION		
EXP	EXPANSION	RO	ROUGH OPENING		
EXT	EXTERIOR	RP	RIGGING POINT		
FFE	FINISH FLOOR ELEVATION				
FL	FLOOR				
FND	FOUNDATION				
FR	FIRE RESISTANT				
FRM	FORMER				
FTG	FOOTING				
FS	FOOTING STEP				

DRAWING LIST

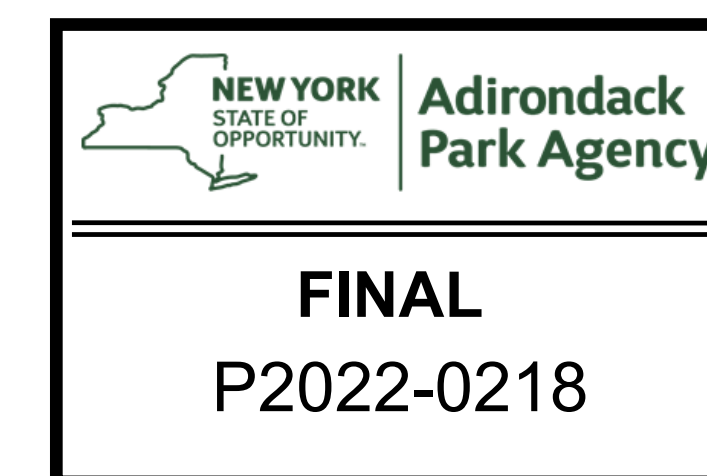
SHEET	TITLE	REVISION	DATE
COV	COVER	H	03.14.24
C01	DEMO AND ESC PLAN	B	01.15.24
C01A	EXISTING BOAT COUNT PLAN	C	01.15.24
C10	SITE PLAN	G	03.14.24
C10A	BOAT COUNT PLAN	G	03.14.24
C11	CHANNEL PLAN	D	03.14.24
C20	DETAILS		02.01.22
C21	DETAILS		04.12.22
C22	NOTES		04.12.22
C30	OVERLAY PLAN	C	03.14.24
C31	OVERLAY TABLES	B	03.14.24
C32	(SHEET REMOVED FROM SET)		03.14.24

SYMBOLS LEGEND

DETAIL MARK		DETAIL NUMBER SHEET WHERE DETAIL IS SHOWN
SECTION MARK		SECTION NUMBER SHEET WHERE SECTION IS SHOWN
REFERENCE ELEVATION		1904.27 THIRD FLOOR

CONSTRUCTION NOTES

- EROSION CONTROL FEATURES TO BE INSTALLED PRIOR TO ALL OTHER WORK AND REMAIN IN PLACE AS REQUIRED AND BE MAINTAINED THROUGHOUT DURATION OF PROJECT.
- RESTORE ALL EXTERIOR DISTURBED AREAS TO PRE-DISTURBED CONDITION. SEED TO GRASS AND MULCH IF LAWN AREA. FILL, COMPACT, AND GRADE GRAVEL DRIVES.
- CONTACT NORTH WOODS ENGINEERING, PLLC AT (518) 891-4975, MIN 2 DAYS PRIOR TO CONSTRUCTION.



LOCATION
TOWN OF SANTA CLARA, NY

DATE	ISSUED FOR	REV
4.12.22	PERMITTING	
5.04.22	TSC UPDATES	A
5.13.22	TSC UPDATES	B
5.24.22	APA PERMITTING	C
8.26.22	APA PERMITTING	D
02.01.23	APA UPDATES	E
08.01.23	APA UPDATES	F
01.15.24	APA UPDATES	G
03.14.24	APA UPDATES	H

DRAWN BY: JA GARSO
CHECKED BY: TJ NORTHRUP
PROJECT #: 20-057
ORIGINAL 24"x36"

TITLE
COVER

SHEET
COV



WARNING: IT IS A VIOLATION OF NEW YORK STATE LAW FOR ANY PERSON UNLICENSED UNDER THE SUPERVISION OF A LICENSED PROFESSIONAL ENGINEER TO ALTER AN ITEM IN ANY WAY. IF ALTERED, THE ALTERING ENGINEER SHALL AFFIX TO THE DOCUMENT THEIR SEAL AND THE NOTATION "ALTERED BY FOLLOWED BY THEIR SIGNATURE AND THE DATE OF ALTERATION, AND A SPECIFIC DESCRIPTION OF THE ALTERATION."

PROJECT NAME
**USL MARINA, LLC TOWN OF SANTA CLARA
FISH CREEK PONDS, TOWN OF SANTA CLARA**
4548 NYS ROUTE 30, SARANAC LAKE, NY, 12983

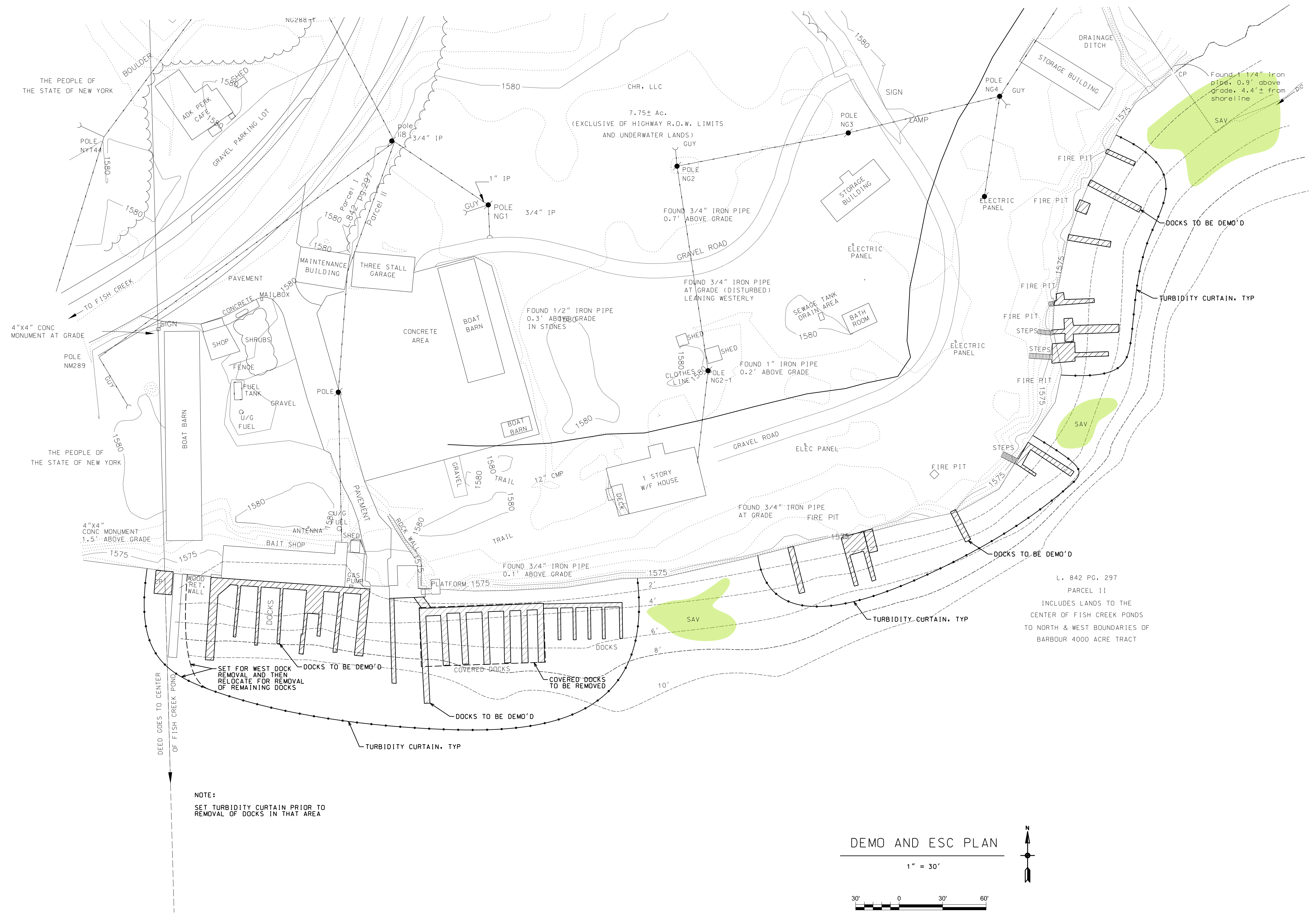
LOCATION
TOWN OF SANTA CLARA, NY

DATE	ISSUED FOR	REV
2-01-22	PERMITTING	
4-12-22	PERMITTING	A

DRAWN BY: JA GARSO
CHECKED BY: TJ NORTHRUP
PROJECT #: 20-057
ORIGINAL 24"x36"

TITLE
DEMO AND ESC PLAN

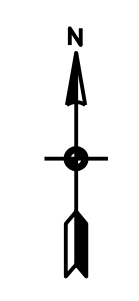
SHEET
C01



NOTE:
SET TURBIDITY CURTAIN PRIOR TO
REMOVAL OF DOCKS IN THAT AREA

DEMO AND ESC PLAN

1" = 30'



L. 842 PG. 297
PARCEL 11
INCLUDES LANDS TO THE
CENTER OF FISH CREEK PONDS
TO NORTH & WEST BOUNDARIES OF
BARBOUR 4000 ACRE TRACT



WARNING: IT IS A VIOLATION OF NEW YORK STATE LAW FOR ANY PERSON, UNLESS ACTING UNDER THE SUPERVISION OF A LICENSED PROFESSIONAL ENGINEER, TO ALTER AN ITEM IN ANY WAY. IF ALTERED, THE ALTERING ENGINEER SHALL AFFIX TO THE DOCUMENT THEIR SEAL AND THE NOTATION "ALTERED BY FOLLOWED BY THEIR SIGNATURE AND THE DATE OF ALTERATION, AND A SPECIFIC DESCRIPTION OF THE ALTERATION."

PROJECT NAME
**USL MARINA, LLC
FISH CREEK PONDS, TOWN OF SANTA CLARA**
4548 NYS ROUTE 30, SARANAC LAKE, NY, 12983

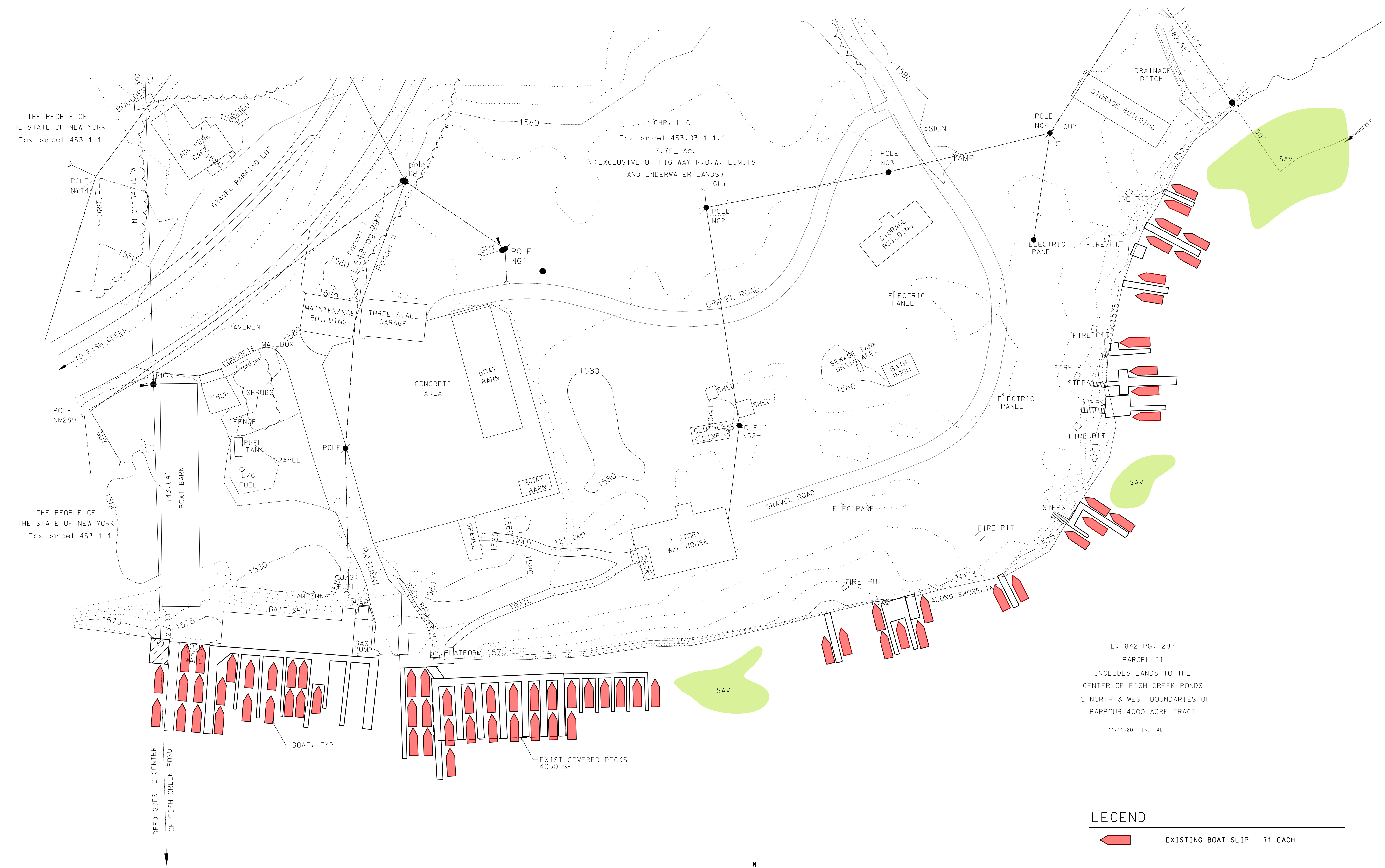
LOCATION
TOWN OF SANTA CLARA, NY

DATE	ISSUED FOR	REV
11.15.22	APA UPDATES	
02.01.23	APA UPDATES	A
08.01.23	APA UPDATES	B

DRAWN BY: JA GARSO
CHECKED BY: TJ NORTHRUP
PROJECT #: 20-057
ORIGINAL 24"x36"

TITLE
EXISTING BOAT COUNT PLAN

SHEET
C01A



EXISTING BOAT COUNT PLAN

1" = 30'



LEGEND

EXISTING BOAT SLIP - 71 EACH

GENERAL NOTES

- 1) SITE PLAN BASED UPON MAPPING FROM GEOMATICS LAND SURVEYING, PC SARANAC LAKE, NY, TITLED "MAP OF BOUNDARY SURVEY, PREPARED FOR USL MARINA, LLC", INTERIM MAP DATED 7/16/19.
- 2) WATER DEPTHS PREPARED FROM INFORMATION PROVIDED BY NORTH COUNTRY ECOLOGICAL SERVICES, DATED 6/10/20.

THE PEOPLE OF THE STATE OF NEW YORK
Tax parcel 453-1-1

THE PEOPLE OF THE STATE OF NEW YORK
Tax parcel 453-1-1

CHR, LLC
Tax parcel 453.03-1-1.1
7.75± Ac.
(EXCLUSIVE OF HIGHWAY R.O.W. LIMITS
AND UNDERWATER LANDS)

L. 842 PG. 297
PARCEL 11
INCLUDES LANDS TO THE
CENTER OF FISH CREEK PONDS
TO NORTH & WEST BOUNDARIES OF
BARBOUR 4000 ACRE TRACT

11.10.20 INITIAL

WARNING: IT IS A VIOLATION OF NEW YORK STATE LAW FOR ANY PERSON, UNLESS ACTING UNDER THE SUPERVISION OF A LICENSED PROFESSIONAL ENGINEER, TO ALTER AN ITEM IN ANY WAY. IF ALTERED, THE ALTERING ENGINEER SHALL AFFIX TO THE DOCUMENT THEIR SEAL AND THE NOTATION "ALTERED BY FOLLOWED BY THEIR SIGNATURE AND THE DATE OF ALTERATION, AND A SPECIFIC DESCRIPTION OF THE ALTERATION."

PROJECT NAME
USL MARINA, LLC OF SANTA CLARA
FISH CREEK PONDS, TOWN OF SANTA CLARA
 4548 NYS ROUTE 30, SARANAC LAKE, NY, 12983

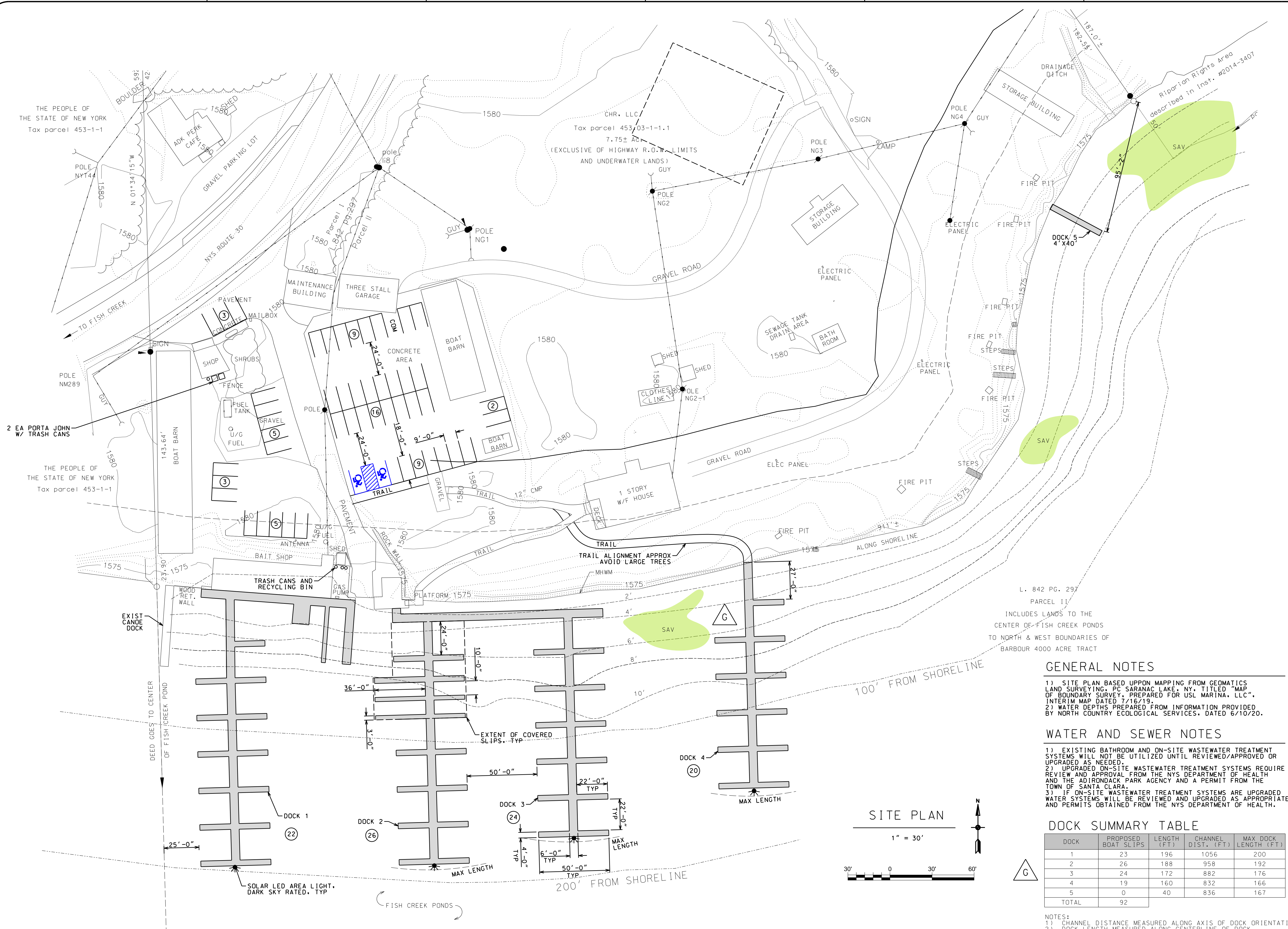
LOCATION
TOWN OF SANTA CLARA, NY

DATE	ISSUED FOR	REV
2-01-22	PERMITTING	A
4-12-22	PERMITTING	A
5-04-22	TSC UPDATES	B
5-11-22	TSC UPDATES	C
11-15-22	APA UPDATES	D
08-01-23	APA UPDATES	E
01-15-24	APA UPDATES	F
03-14-24	APA UPDATES	G

DRAWN BY: JA GARSO
 CHECKED BY: TJ NORTHRUP
 PROJECT #: 20-057
 ORIGINAL 24"x36"

TITLE
SITE PLAN

SHEET
C10



GENERAL NOTES

- 1) SITE PLAN BASED UPON MAPPING FROM GEOMATICS LAND SURVEYING, PC SARANAC LAKE, NY, TITLED "MAP OF BOUNDARY SURVEY, PREPARED FOR USL MARINA, LLC", INTERIM MAP DATED 7/16/19.
- 2) WATER DEPTHS PREPARED FROM INFORMATION PROVIDED BY NORTH COUNTRY ECOLOGICAL SERVICES, DATED 6/10/20.

WATER AND SEWER NOTES

- 1) EXISTING BATHROOM AND ON-SITE WASTEWATER TREATMENT SYSTEMS WILL NOT BE UTILIZED UNTIL REVIEWED/APPROVED OR UPGRADED AS NEEDED.
- 2) UPGRADED ON-SITE WASTEWATER TREATMENT SYSTEMS REQUIRE REVIEW AND APPROVAL FROM THE NYS DEPARTMENT OF HEALTH AND THE ADIRONDACK PARK AGENCY AND A PERMIT FROM THE TOWN OF SANTA CLARA.
- 3) IF ON-SITE WASTEWATER TREATMENT SYSTEMS ARE UPGRADED WATER SYSTEMS WILL BE REVIEWED AND UPGRADED AS APPROPRIATE AND PERMITS OBTAINED FROM THE NYS DEPARTMENT OF HEALTH.

DOCK SUMMARY TABLE

DOCK	PROPOSED BOAT SLIPS	LENGTH (FT)	CHANNEL DIST. (FT)	MAX DOCK LENGTH (FT)
1	23	196	1056	200
2	26	188	958	192
3	24	172	882	176
4	19	160	832	166
5	0	40	836	167
TOTAL	92			

- NOTES:
- 1) CHANNEL DISTANCE MEASURED ALONG AXIS OF DOCK ORIENTATION
 - 2) DOCK LENGTH MEASURED ALONG CENTERLINE OF DOCK
 - 3) DOCK 5 ONLY TO BE USED FOR CANOES/KAYAKS/SUPS



WARNING: IT IS A VIOLATION OF NEW YORK STATE LAW FOR ANY PERSON UNLICENSED UNDER THE SUPERVISION OF A LICENSED PROFESSIONAL ENGINEER TO ALTER AN ITEM IN ANY WAY. IF ALTERED, THE ALTERING ENGINEER SHALL AFFIX TO THE DOCUMENT THEIR SEAL AND THE NOTATION "ALTERED BY FOLLOWED BY THEIR SIGNATURE AND THE DATE OF ALTERATION, AND A SPECIFIC DESCRIPTION OF THE ALTERATION."

USL MARINA, LLC OF SANTA CLARA
FISH CREEK PONDS, TOWN OF SANTA CLARA
 4548 NYS ROUTE 30, SARANAC LAKE, NY, 12983

PROJECT NAME: USL MARINA, LLC OF SANTA CLARA

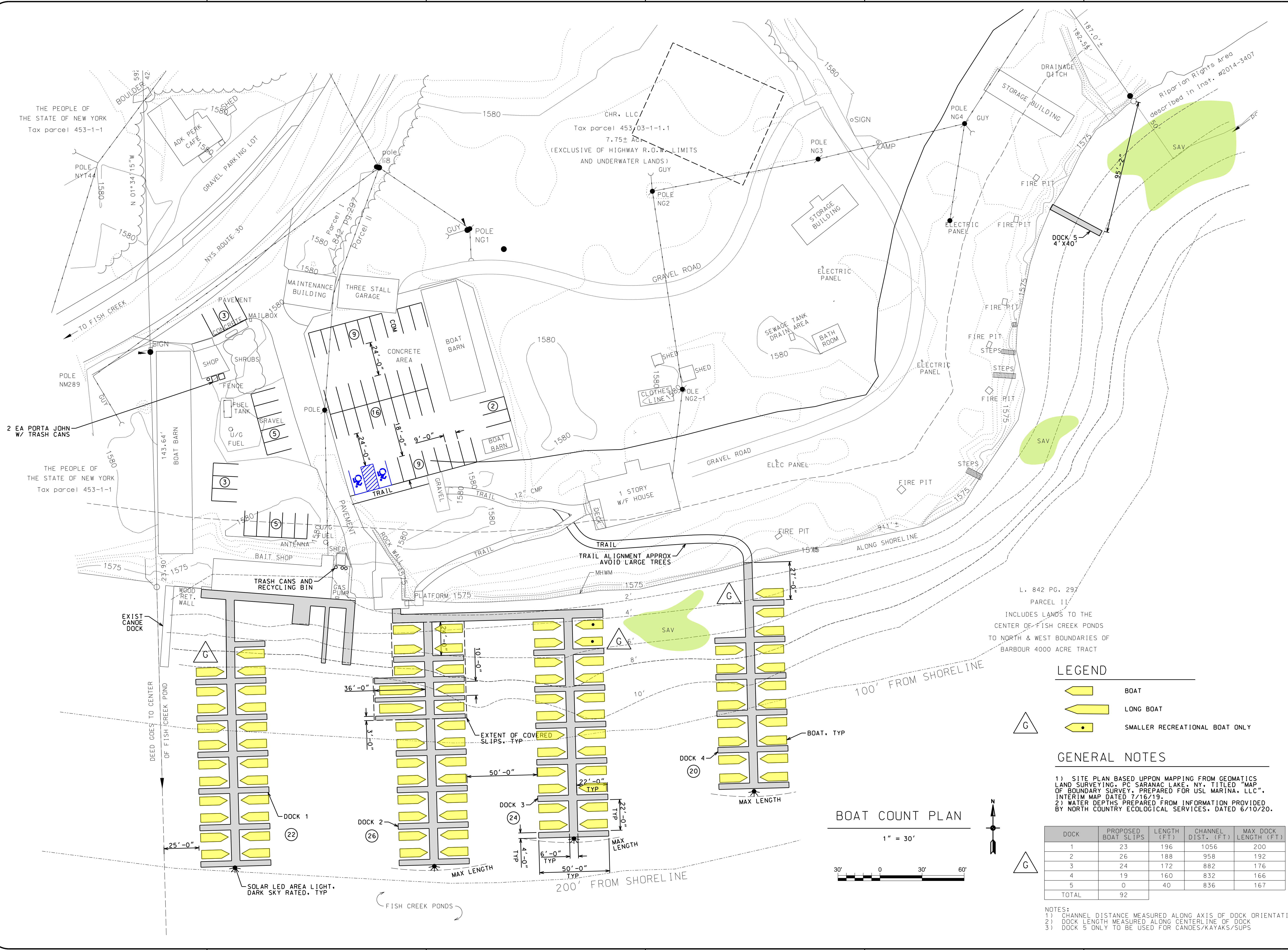
LOCATION: TOWN OF SANTA CLARA, NY

DATE	ISSUED FOR	REV
4.12.22	PERMITTING	
5.04.22	TSC UPDATES	A
5.11.22	TSC UPDATES	B
8.26.22	APA UPDATES	C
2.01.23	APA UPDATES	D
08.01.23	APA UPDATES	E
01.15.24	APA UPDATES	F
03.14.24	APA UPDATES	G

DRAWN BY: JA GARSO
 CHECKED BY: TJ NORTHRUP
 PROJECT #: 20-057
 ORIGINAL 24"x36"

TITLE: **BOAT COUNT PLAN**

SHEET: **C10A**



LEGEND

- BOAT
- LONG BOAT
- SMALLER RECREATIONAL BOAT ONLY

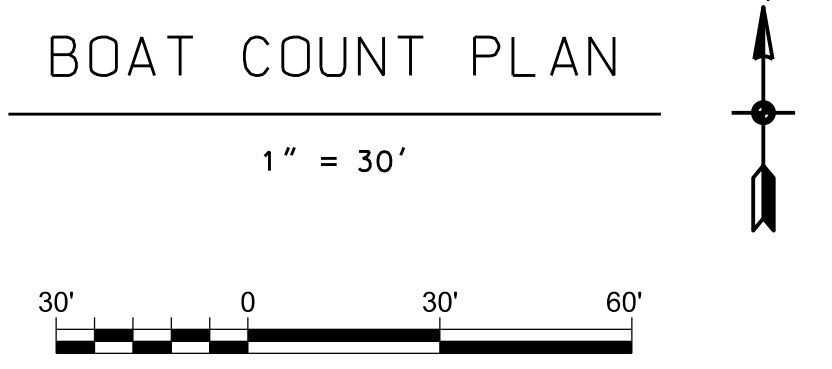
GENERAL NOTES

- SITE PLAN BASED UPON MAPPING FROM GEOMATICS LAND SURVEYING, PC SARANAC LAKE, NY, TITLED "MAP OF BOUNDARY SURVEY, PREPARED FOR USL MARINA, LLC", INTERIM MAP DATED 7/16/19.
- WATER DEPTHS PREPARED FROM INFORMATION PROVIDED BY NORTH COUNTRY ECOLOGICAL SERVICES, DATED 6/10/20.

DOCK	PROPOSED BOAT SLIPS	LENGTH (FT)	CHANNEL DIST. (FT)	MAX DOCK LENGTH (FT)
1	23	196	1056	200
2	26	188	958	192
3	24	172	882	176
4	19	160	832	166
5	0	40	836	167
TOTAL	92			

NOTES:

- CHANNEL DISTANCE MEASURED ALONG AXIS OF DOCK ORIENTATION
- DOCK LENGTH MEASURED ALONG CENTERLINE OF DOCK
- DOCK 5 ONLY TO BE USED FOR CANOES/KAYAKS/SUPS





WARNING: IT IS A VIOLATION OF NEW YORK STATE LAW FOR ANY PERSON, UNLESS ACTING UNDER THE SUPERVISION OF A LICENSED PROFESSIONAL ENGINEER, TO ALTER AN ITEM IN ANY WAY. IF ALTERED, THE ALTERING ENGINEER SHALL AFFIX TO THE DOCUMENT THEIR SEAL AND THE NOTATION "ALTERED BY" FOLLOWED BY THEIR SIGNATURE AND THE DATE OF ALTERATION, AND A SPECIFIC DESCRIPTION OF THE ALTERATION.

PROJECT NAME
**USL MARINA, LLC
 FISH CREEK PONDS, TOWN OF SANTA CLARA**
 4548 NYS ROUTE 30, SARANAC LAKE, NY, 12983

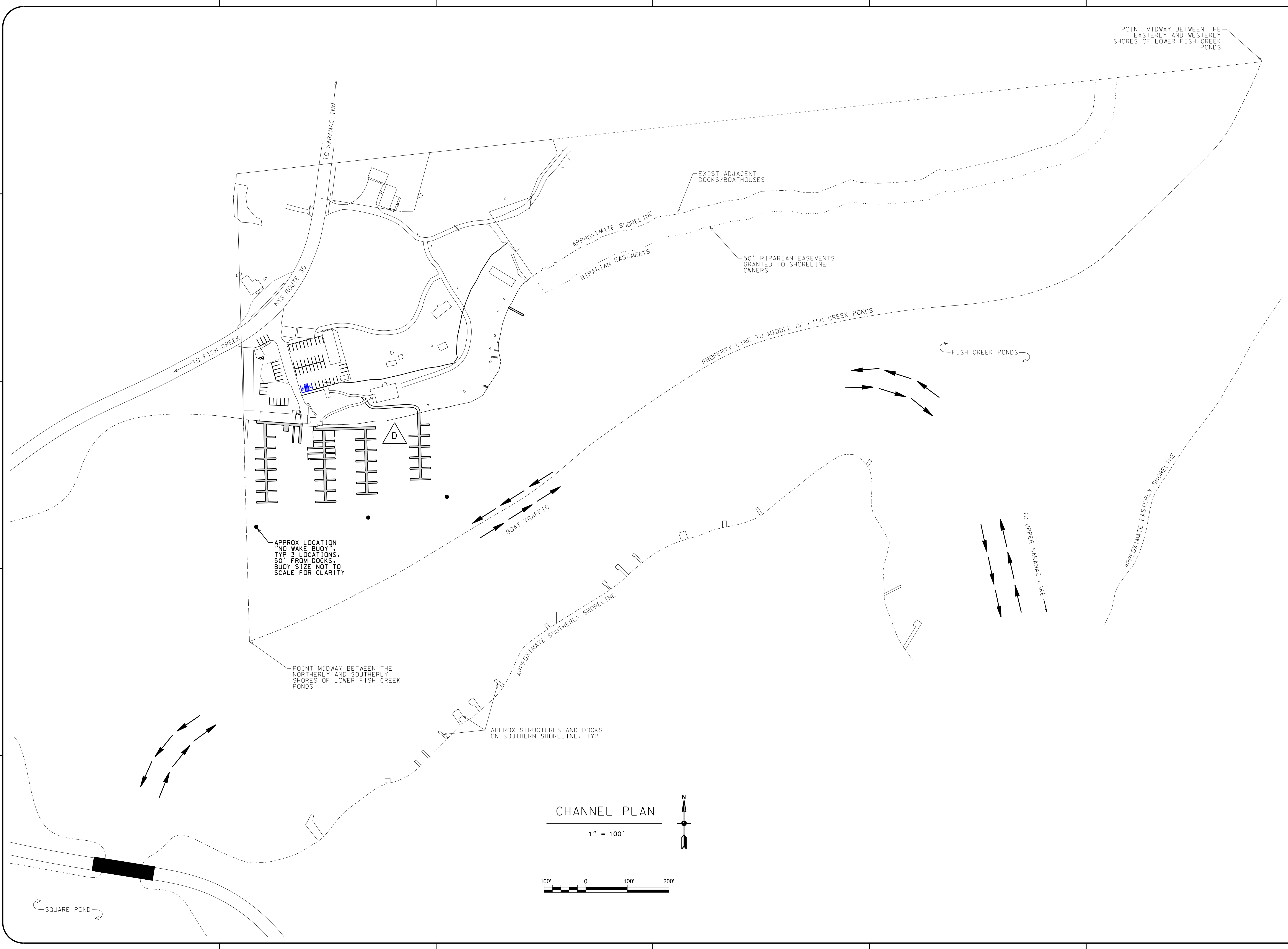
LOCATION
TOWN OF SANTA CLARA, NY

DATE	ISSUED FOR	REV
4.12.22	PERMITTING	
5.04.22	TSC UPDATES	A
8.01.23	APA UPDATES	B
01.15.24	APA & DEC UPDATES	C
03.14.24	APA UPDATES	D

DRAWN BY: JA GARSO
 CHECKED BY: TJ NORTHRUP
 PROJECT #: 20-057
 ORIGINAL 24"x36"

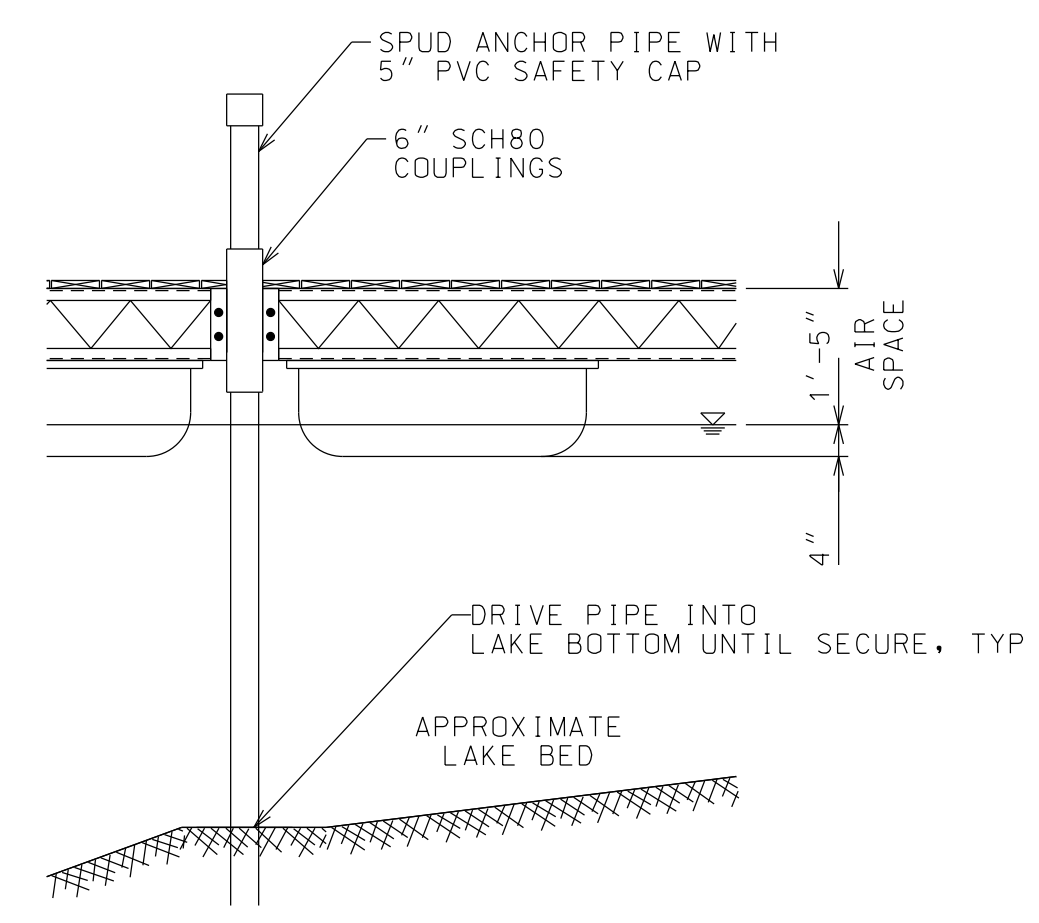
TITLE
CHANNEL PLAN

SHEET
C11

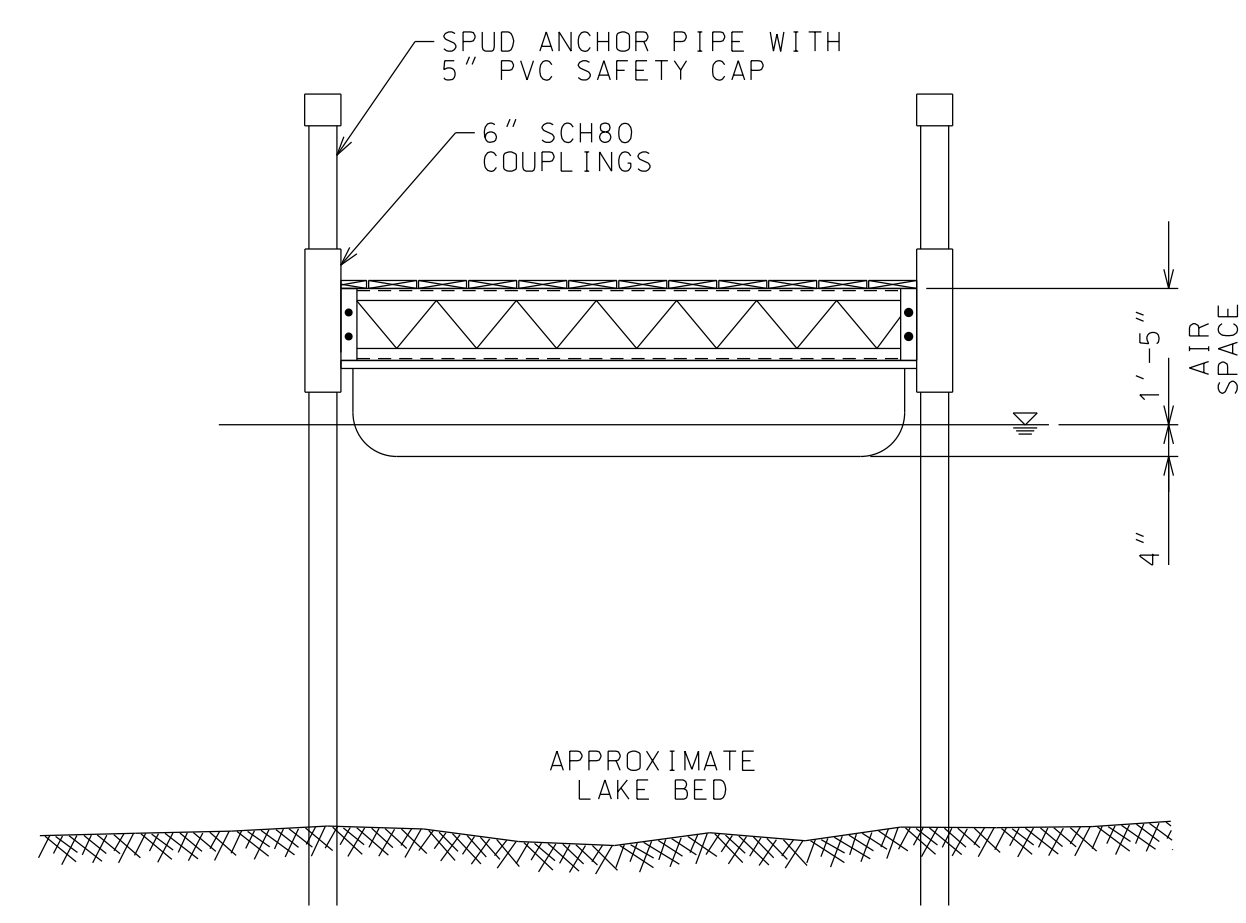




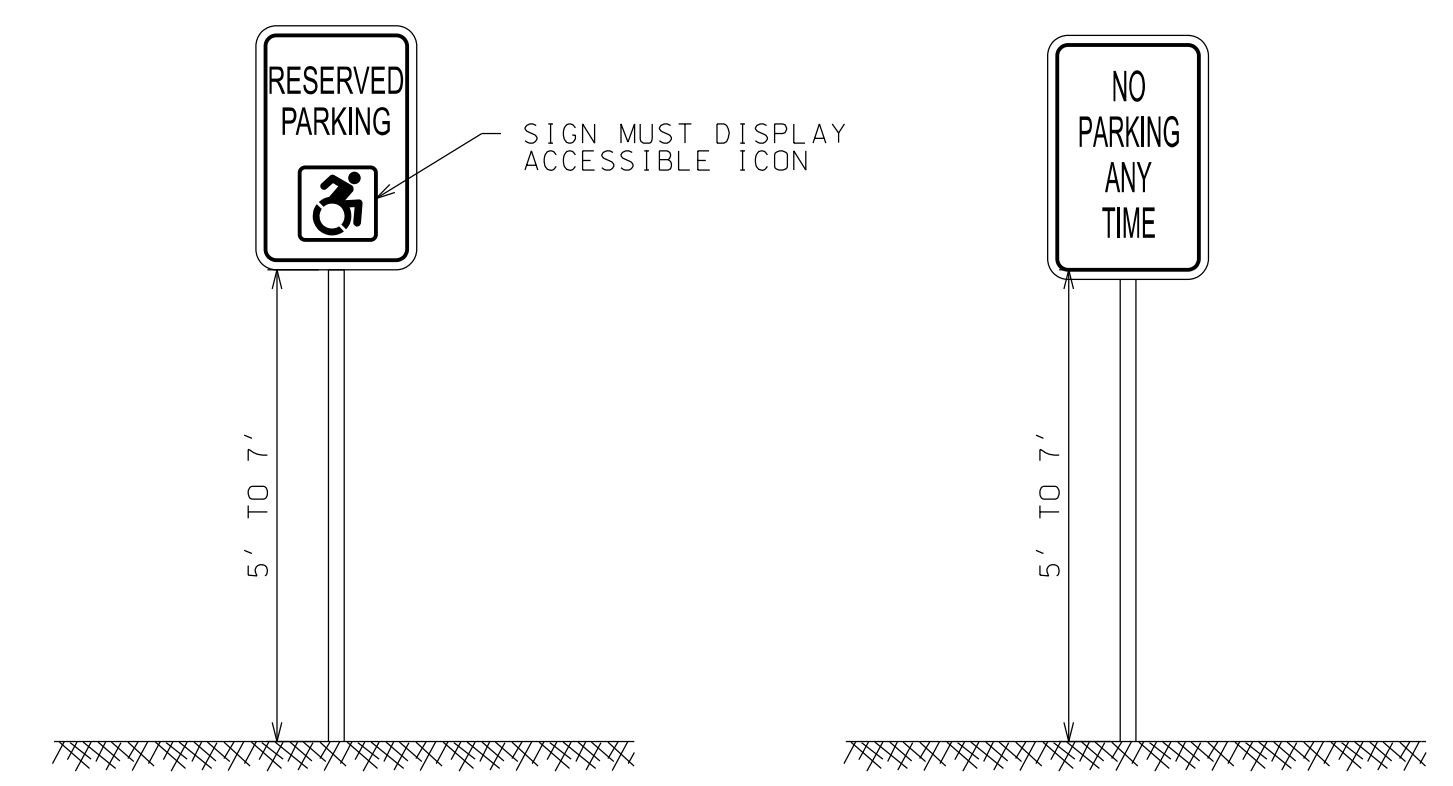
WARNING: IT IS A VIOLATION OF NEW YORK STATE LAW FOR ANY PERSON, UNLESS ACTING UNDER THE SUPERVISION OF A LICENSED PROFESSIONAL ENGINEER, TO ALTER AN ITEM IN ANY WAY. IF ALTERED, THE ALTERING ENGINEER SHALL AFFIX TO THE DOCUMENT THEIR SEAL AND THE NOTATION "ALTERED BY" FOLLOWED BY THEIR SIGNATURE AND THE DATE OF ALTERATION, AND A SPECIFIC DESCRIPTION OF THE ALTERATION.



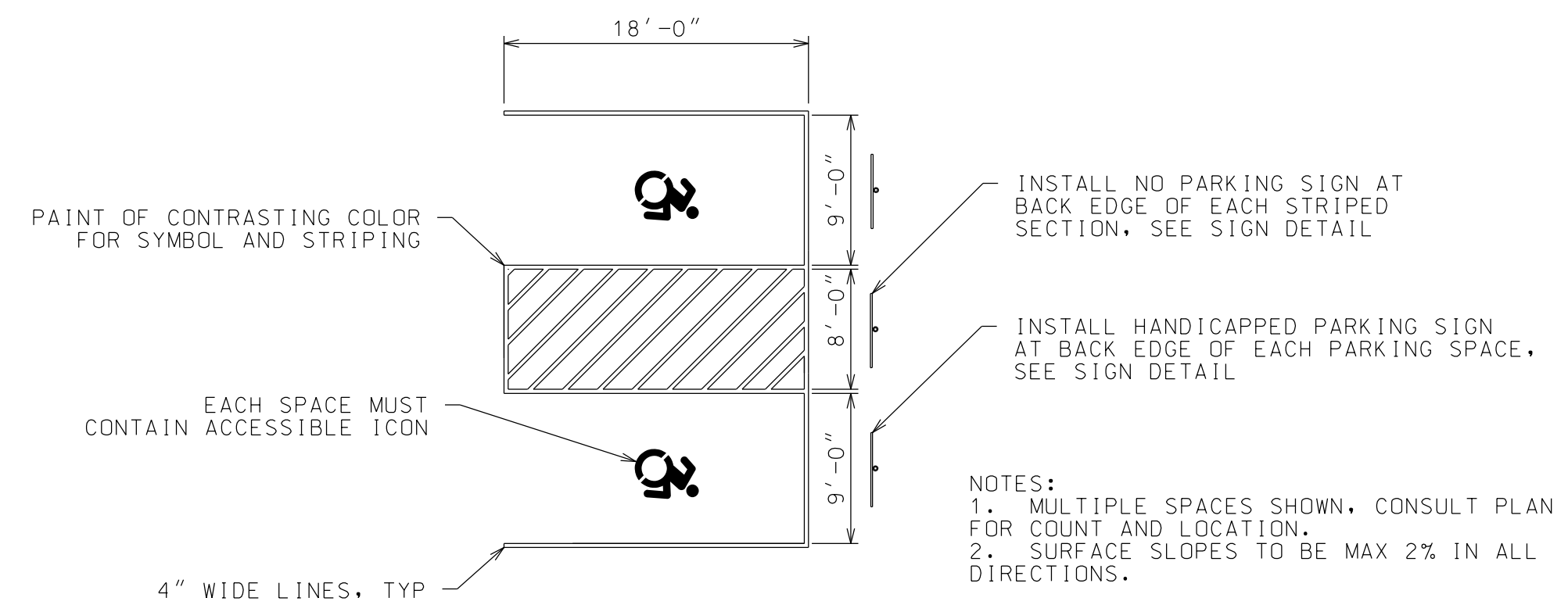
SPUD POLE ANCHOR SYSTEM - SIDE VIEW
NTS



SPUD POLE ANCHOR SYSTEM - END VIEW
NTS



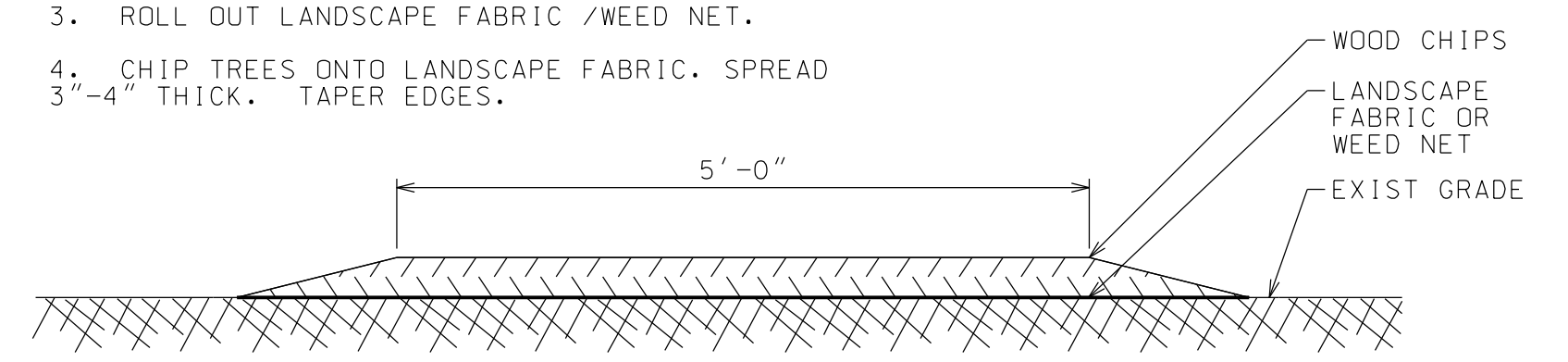
SIGN DETAILS
NOTE: SIGNS MAY BE MOUNTED ON STRUCTURE IF APPROVED BY THE ENGINEER.



ACCESSIBLE PARKING SPACE DETAILS
NTS

PATH CONSTRUCTION NOTES:

1. CUT & REMOVE ALL BRUSH AT GROUND LEVEL.
2. CUT ALL TREES AT GROUND LEVEL. REGRADE AS NEEDED TO REMOVE STONES & FILL IN LOW SPOTS.
3. ROLL OUT LANDSCAPE FABRIC / WEED NET.
4. CHIP TREES ONTO LANDSCAPE FABRIC. SPREAD 3"-4" THICK, TAPER EDGES.



TYPICAL WALKING PATH SECTION
NTS

PROJECT NAME
USL MARINA, LLC
FISH CREEK PONDS, TOWN OF SANTA CLARA
4548 NYS ROUTE 30, SARANAC LAKE, NY, 12983

LOCATION
TOWN OF SANTA CLARA, NY

DATE	ISSUED FOR	REV
2-01-22	PERMITTING	

DRAWN BY: JA GARSO
CHECKED BY: TJ NORTHRUP
PROJECT #: 20-057
ORIGINAL 24"x36"

TITLE
DETAILS

SHEET
C20



WARNING: IT IS A VIOLATION OF NEW YORK STATE LAW FOR ANY PERSON UNLESS ACTING UNDER THE SUPERVISION OF A LICENSED PROFESSIONAL ENGINEER TO ALTER AN ITEM IN ANY WAY. IF ALTERED, THE ALTERING ENGINEER SHALL AFFIX TO THE DOCUMENT THEIR SEAL AND THE NOTATION "ALTERED BY" FOLLOWED BY THEIR SIGNATURE AND THE DATE OF ALTERATION, AND A SPECIFIC DESCRIPTION OF THE ALTERATION.

PROJECT NAME
USL MARINA, LLC
FISH CREEK PONDS, TOWN OF SANTA CLARA
4548 NYS ROUTE 30, SARANAC LAKE, NY, 12983

LOCATION
TOWN OF SANTA CLARA, NY

DATE	ISSUED FOR	REV
4.12.22	PERMITTING	

DRAWN BY: JA GARSO
CHECKED BY: TJ NORTHRUP
PROJECT #: 20-057
ORIGINAL 24"x36"

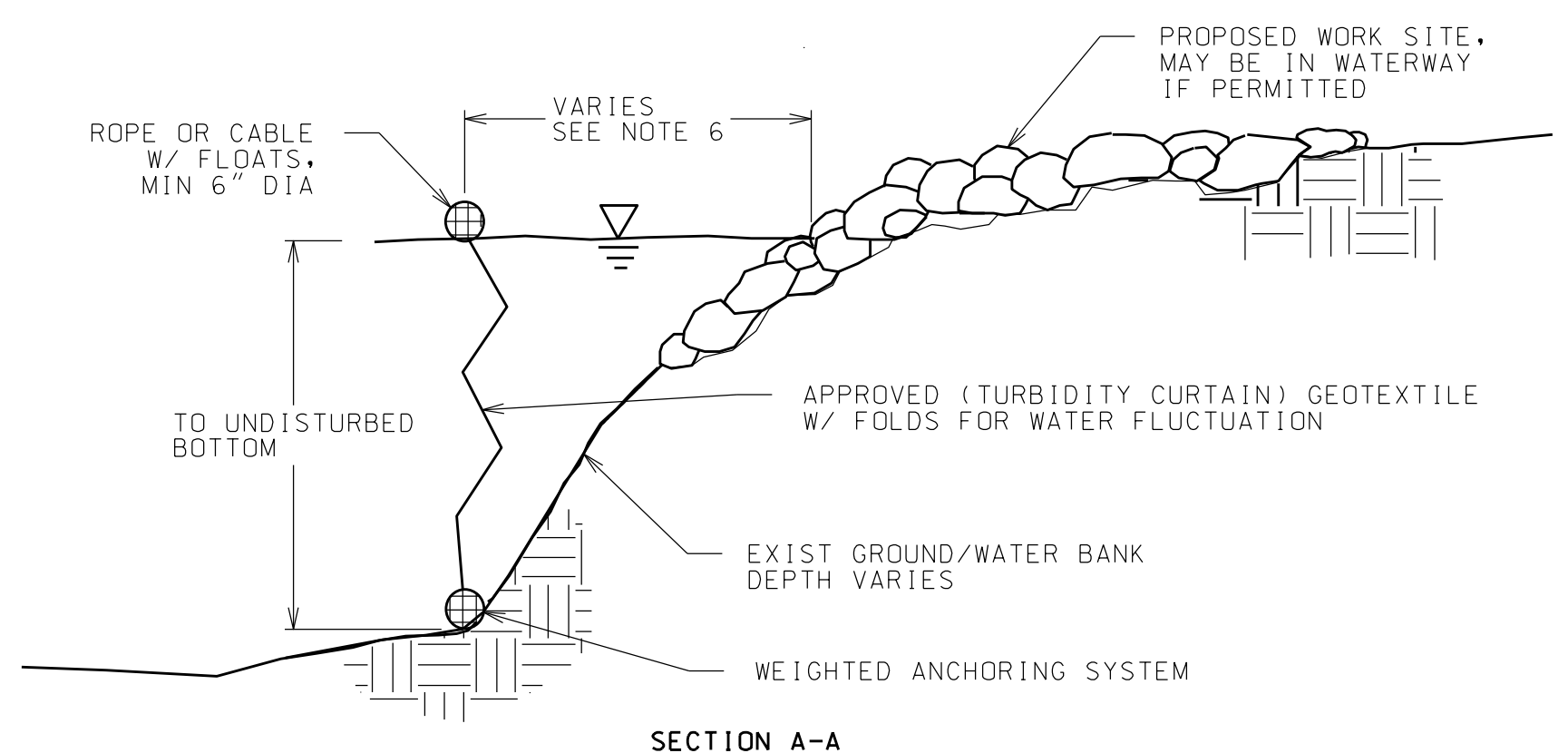
TITLE

DETAILS

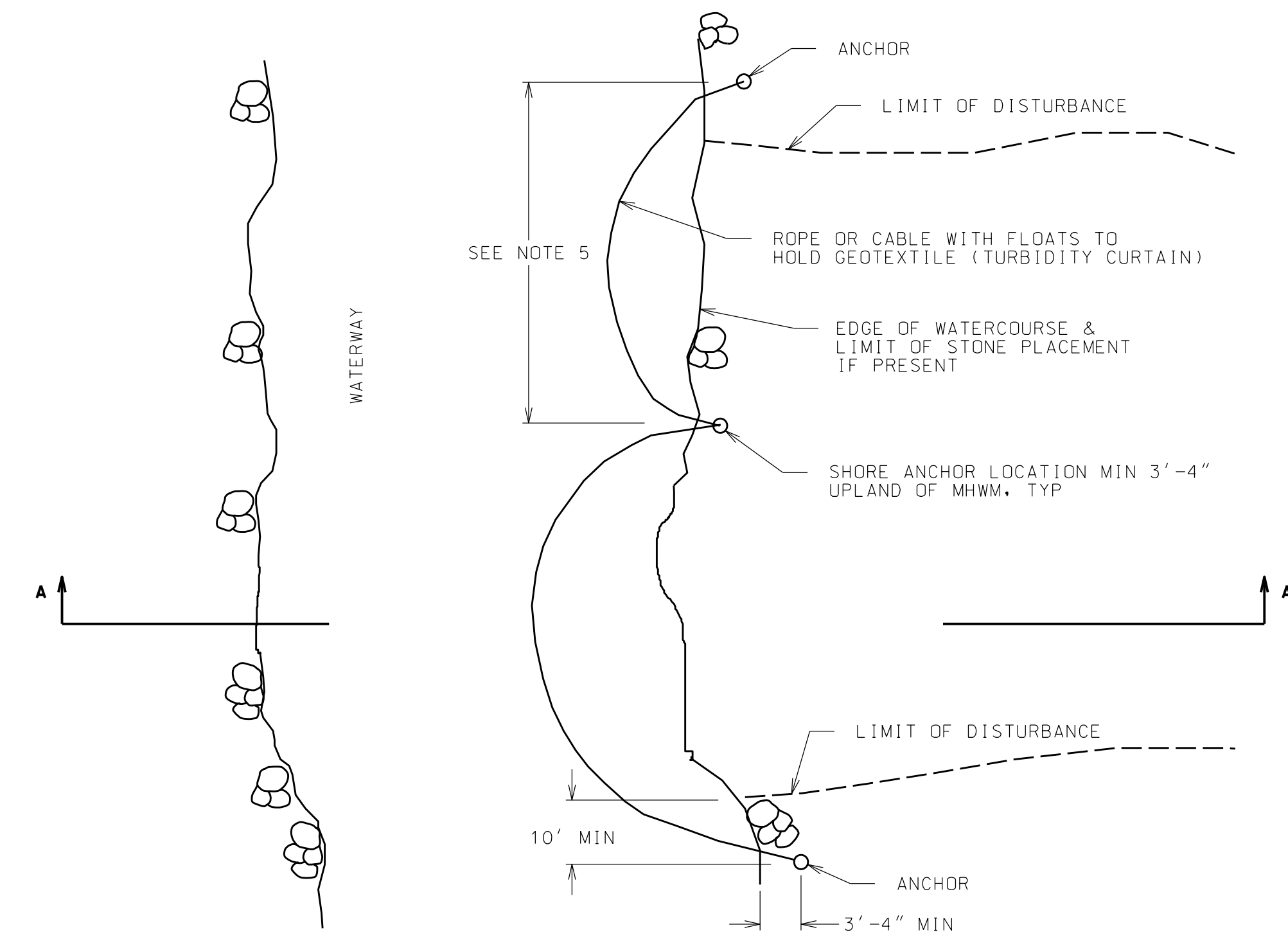
SHEET
C21

TURBIDITY CURTAIN NOTES

- 1) THE PURPOSE OF A TURBIDITY CURTAIN IS TO SEPARATE WORK AREAS IN OR ADJACENT TO WATERWAYS, TO PREVENT TURBIDITY FROM ENTERING THE WATERWAY.
- 2) TURBIDITY CURTAIN SHALL NOT BE PLACED ACROSS A FLOWING WATERWAY, OR IN A WATERWAY WITH STREAM VELOCITIES GREATER THAN 5.0 FT/SEC.
- 3) CONCENTRATED FLOW OUTLETS SUCH AS CULVERT OUTLETS, DITCHES, ETC SHALL NOT BE LOCATED BEHIND TURBIDITY CURTAIN.
- 4) THE DETAIL DEPICTS WORK AT A SHORE LINE SITE, BUT TURBIDITY CURTAIN MAY BE APPLIED AT OTHER LOCATIONS.
- 5) TURBIDITY CURTAIN SHALL BE A MAXIMUM OF 110' LONG FOR EACH SECTION OF CURTAIN REQUIRED. LAST SECTION SHALL TERMINATE 10' BEYOND THE LIMIT OF DISTURBANCE.
- 6) THE TURBIDITY CURTAIN SHALL BE PLACED AS CLOSE TO THE WORK AS POSSIBLE WITHOUT INTERFERING WITH CONSTRUCTION OPERATIONS.
- 7) THE CONTRACTOR SHALL CONTINUALLY MONITOR THE INSTALLATION, TAKING INTO ACCOUNT WEATHER PATTERNS AND PREVAILING WIND DIRECTIONS THAT MAY AFFECT WATER LEVELS, VELOCITY AND MOVEMENT OF THE TURBIDITY CURTAIN.
- 8) THE TURBIDITY CURTAIN SHALL BE REMOVED BY PULLING TOWARD THE SHORE TO MINIMIZE ESCAPE OF SEDIMENTS INTO THE WATERWAY.
- 9) THE WEIGHTED ANCHOR SYSTEM SHALL BE A TYPE THAT ALLOWS THE CURTAIN TO CONFORM TO THE CONTOUR OF THE BOTTOM OF THE WATERWAY.



SECTION A-A



PLAN

TYPICAL TEMPORARY TURBIDITY CURTAIN DETAIL

NTS



WARNING: IT IS A VIOLATION OF NEW YORK STATE LAW FOR ANY PERSON, UNLESS ACTING UNDER THE SUPERVISION OF A LICENSED PROFESSIONAL ENGINEER, TO ALTER AN ITEM IN ANY WAY. IF ALTERED, THE ALTERING ENGINEER SHALL AFFIX TO THE DOCUMENT THEIR SEAL AND THE NOTATION "ALTERED BY" FOLLOWED BY THEIR SIGNATURE AND THE DATE OF ALTERATION, AND A SPECIFIC DESCRIPTION OF THE ALTERATION.

PROJECT NAME
**USL MARINA, LLC OF SANTA CLARA
 FISH CREEK PONDS, TOWN OF SANTA CLARA**
 4548 NYS ROUTE 30, SARANAC LAKE, NY, 12983

LOCATION
TOWN OF SANTA CLARA, NY

DATE	ISSUED FOR	REV
4.12.22	PERMITTING	

DRAWN BY: JA GARSO
 CHECKED BY: TJ NORTHRUP
 PROJECT #: 20-057
 ORIGINAL 24"x36"

TITLE
NOTES

SHEET
C22

CONSTRUCTION SPILL PREVENTION AND CONTROL PLAN

MATERIAL HANDLING PROCEDURES AND STORAGE REQUIREMENTS:

1. RECYCLE, RECLAIM, OR REUSE PROCESS MATERIALS, THEREBY REDUCING THE AMOUNT OF PROCESS MATERIALS THAT ARE BROUGHT ON SITE.
2. INSTALL LEAK DETECTION DEVICES, OVERFLOW CONTROLS, AND DIVERSION BERMS WHEN APPROPRIATE.
3. DISCONNECT ANY DRAINS FROM AREAS THAT LEAD TO THE DRAINAGE OR STORMWATER SYSTEM.
4. PERFORM PREVENTATIVE MAINTENANCE ON TANKS, VALVES, PUMPS, PIPES AND OTHER EQUIPMENT. EQUIPMENT THAT HAS LEAKS SHALL BE IMMEDIATELY REPAIRED OR REMOVED FROM THE SITE.
5. USE PROPER MATERIAL TRANSFER PROCEDURES OR FILLING PROCEDURES FOR TANKS AND OTHER EQUIPMENT.
6. SUBSTITUTE LESS OR NON-TOXIC MATERIALS FOR TOXIC MATERIALS.

SPILL RESPONSE:

1. PREVENT THE DISCHARGE OF POLLUTANTS FROM SPILLS AND LEAKS AND IMPLEMENT CHEMICAL SPILL AND LEAK PREVENTION AND RESPONSE PROCEDURES.
2. IN THE EVENT OF A SPILL, FOLLOW CONTAINMENT PROCEDURES OUTLINED IN THE "CONSTRUCTION WASTE MANAGEMENT PLAN."
3. FOR HAZARDOUS MATERIALS, FOLLOW CLEANUP INSTRUCTIONS ON PACKAGE. USE AN ABSORBENT MATERIAL SUCH AS SAWDUST OR KITTY LITTER TO CONTAIN THE SPILL.
4. IN THE EVENT OF A SPILL, NOTIFY PROJECT SUPERINTENDENT, ENGINEER, AND LOCAL HIGHWAY DEPARTMENT STAFF. IN THE EVENT OF A HAZARDOUS MATERIAL SPILL ALSO NOTIFY THE NYS DEPARTMENT OF ENVIRONMENTAL CONSERVATION, THE NYS POLICE, AND THE LOCAL FIRE DEPARTMENT.

MULCH STABILIZATION NOTES

1. MULCH STABILIZATION SHALL BE COMPLETED WITHIN 14 DAYS OF FIRST DISTURBANCE AND IMMEDIATELY AFTER COMPLETION OF ROUGH GRADING ACTIVITIES.
2. APPLY MULCHING MATERIAL. MULCH SHALL BE OAT OR WHEAT STRAW, FREE FROM WEEDS OR FOREIGN MATTER DETRIMENTAL TO PLANT LIFE, AND DRY.
3. IN MID-SUMMER, LATE FALL, OR WINTER: APPLY 100 LB PER 1000 SF, PLUS TACKIFIER. IN SPRING OR EARLY FALL: APPLY 45 LB PER 1000 SF, PLUS TACKIFIER.
4. INSTALL JUTE MATTING WITH OPEN WEAVE FOR SLOPES GREATER THAN 1:6, BUT LESS THAN 1:4. FOR SLOPES GREATER THAN 1:4 INSTALL CURLEX I CL BY AEC OR APPROVED EQUAL, UNO.

FINAL SEEDING NOTES

1. PREPARE SUBSOIL TO ELIMINATE UNEVEN AREAS AND LOW SPOTS. MAINTAIN LINES, LEVELS, PROFILES AND CONTOURS. MAKE CHANGES IN GRADE GRADUAL. BLEND SLOPES INTO LEVEL AREAS.
2. REMOVE FOREIGN MATERIALS, WEEDS, AND UNDESIRABLE PLANTS AND THEIR ROOTS.
3. SPREAD TOPSOIL TO A MINIMUM DEPTH OF 4" OVER AREA TO BE SEEDDED.
4. TYPICAL SEED MIXES FOR LAWN AREAS IS 15-40% KENTUCKY BLUEGRASS, 30-50% FINE FESCUE, 15-40% PERENNIAL RYEGRASS, 5-15% ANNUAL RYEGRASS AND 0-5% WHITE CLOVER. SEED MIXES FOR GENERAL RESTORATION IS 50-70% FINE FESCUE, 15-40% PERENNIAL RYEGRASS, 5-15% ANNUAL RYEGRASS AND 5-10% WHITE CLOVER. APPLY AT A RATE OF 350 LB/AC. PLACE SEED EVENLY IN TWO INTERSECTING DIRECTIONS AND RAKE LIGHTLY. ALTERNATE SEED MIXES MAY BE APPROPRIATE FOR SPECIFIC LOCATIONS AND SEASONS. CONFIRM WITH ENGINEER PRIOR TO SEEDING.
5. APPLY MULCHING MATERIAL TO SEED AREA. MULCH SHALL BE OAT OR WHEAT STRAW, FREE FROM WEEDS OR FOREIGN MATTER DETRIMENTAL TO PLANT LIFE, AND DRY. REFER TO MULCH STABILIZATION NOTES FOR APPLICATION REQUIREMENTS.
6. INSTALL JUTE MATTING WITH OPEN WEAVE FOR SLOPES GREATER THAN 1:6, BUT LESS THAN 1:4. FOR SLOPES GREATER THAN 1:4 INSTALL CURLEX I CL BY AEC OR APPROVED EQUAL, UNO.
7. REAPPLY SEED UNTIL GRASS IS COMPLETELY ESTABLISHED.
8. WHEN HYDROSEEDING SLOPES OVER 3:1, USE HYDROSEEDER TO APPLY SEED, FERTILIZER, WOOD FIBER MULCH (45 LB PER 1000 SF), AND MULCH TACKIFIER.
9. FINAL SEEDING OPERATIONS TO COMMENCE WITHIN SEVEN DAYS OF FINAL CONSTRUCTION IN EACH AREA, AND BE COMPLETE WITHIN 14 DAYS.

STABILIZATION MAINTENANCE NOTES

1. FERTILIZE IN EARLY WINTER WITH NITROGEN AT 40 LB/AC.
2. FERTILIZE IN EARLY SPRING WITH 10-10-10 AT 150 LB/AC.
3. KEEP MOWED HEIGHT TO 3" - 4".

CONSTRUCTION WASTE MANAGEMENT PLAN

STORAGE AND DISPOSAL OF CONSTRUCTION SITE WASTES:

1. DESIGNATE A WASTE COLLECTION AREA ONSITE THAT DOES NOT RECEIVE A SUBSTANTIAL AMOUNT OF RUNOFF FROM UPLAND AREAS AND DOES NOT DRAIN DIRECTLY TO A WATERBODY.
2. ENSURE THAT CONTAINERS HAVE LIDS SO THEY CAN BE COVERED BEFORE PERIODS OF RAIN, AND KEEP CONTAINERS IN A COVERED AREA WHENEVER POSSIBLE.
3. SCHEDULE WASTE COLLECTION TO PREVENT CONTAINERS FROM OVERFILLING.
4. CLEAN UP SPILLS IMMEDIATELY. FOLLOW PROCEDURES OUTLINED IN THE "CONSTRUCTION SPILL PREVENTION AND CONTROL PLAN". FOR HAZARDOUS MATERIALS, FOLLOW CLEANUP INSTRUCTIONS ON THE PACKAGE. USE AN ABSORBENT MATERIAL SUCH AS SAWDUST OR KITTY LITTER TO CONTAIN THE SPILL.
5. COLLECT, REMOVE, AND DISPOSE OF ALL CONSTRUCTION SITE WASTES AT AUTHORIZED DISPOSAL AREAS.
6. WASTEWATER FROM THE WASHOUT OF CONCRETE SHALL BE CONTAINED IN ACCORDANCE WITH STANDARD DETAIL.

DEWATERING

1. DISCHARGE FROM DEWATERING ACTIVITIES SHALL BE MANAGED BY APPROPRIATE CONTROL MEASURES.

DISPOSAL OF HAZARDOUS MATERIALS:

1. CONSULT LOCAL WASTE MANAGEMENT AUTHORITIES ABOUT THE REQUIREMENTS FOR DISPOSING OF HAZARDOUS MATERIALS.
2. TO PREVENT LEAKS, EMPTY AND CLEAN ANY HAZARDOUS WASTE CONTAINERS BEFORE THEY ARE DISPOSED OF.
3. THE ORIGINAL PRODUCT LABEL SHOULD NEVER BE REMOVED FROM THE CONTAINER, AS IT CONTAINS IMPORTANT SAFETY INFORMATION. FOLLOW THE MANUFACTURER'S RECOMMENDED METHOD OF DISPOSAL, WHICH SHOULD BE PRINTED ON THE LABEL.
4. IF EXCESS PRODUCTS NEED TO BE DISPOSED OF, THEY SHOULD NEVER BE MIXED DURING DISPOSAL UNLESS SPECIFICALLY RECOMMENDED BY THE MANUFACTURER.

USE OF PETROLEUM PRODUCTS:

1. STORE PETROLEUM PRODUCTS AND FUEL FOR VEHICLES IN COVERED AREAS WITH DIKES IN PLACE TO CONTAIN ANY SPILLS.
2. IMMEDIATELY CONTAIN AND CLEAN UP ANY SPILLS WITH ABSORBENT MATERIAL.
3. HAVE EQUIPMENT AVAILABLE IN FUEL STORAGE AREAS AND IN VEHICLES TO CONTAIN AND CLEAN UP ANY SPILLS THAT OCCUR.

USE OF PESTICIDES:

1. FOLLOW ALL FEDERAL, STATE, AND LOCAL REGULATIONS THAT APPLY TO THE USE, HANDLING, OR DISPOSAL OF PESTICIDES.
2. DO NOT HANDLE THE MATERIALS ANY MORE THAN NECESSARY.
3. STORE PESTICIDES IN A DRY, COVERED AREA.
4. CONSTRUCT CURBS OR DIKES TO CONTAIN PESTICIDES IN CASE OF SPILLAGE.
5. FOLLOW THE RECOMMENDED APPLICATION RATES AND METHODS.
6. HAVE EQUIPMENT AND ABSORBENT MATERIALS AVAILABLE IN AREAS WHERE PESTICIDES ARE STORED AND USED IN ORDER TO CONTAIN AND CLEAN UP ANY SPILLS THAT OCCUR.

USE OF FERTILIZERS:

1. APPLY FERTILIZERS AT THE MINIMUM RATE AND TO THE MINIMUM AREA NEEDED.
2. WORK THE FERTILIZER DEEPLY INTO THE SOIL TO REDUCE EXPOSURE OF NUTRIENTS TO STORMWATER RUNOFF.
3. APPLY FERTILIZER AT LOWER APPLICATION RATES WITH A HIGHER APPLICATION FREQUENCY.
4. ENSURE THAT EROSION AND SEDIMENT CONTROLS ARE IN PLACE TO PREVENT FERTILIZERS AND SEDIMENTS FROM BEING TRANSPORTED OFF-SITE.

USE OF DETERGENTS:

1. THE USE OF DETERGENTS IS NOT ALLOWED ON THE CONSTRUCTION SITE.
2. EQUIPMENT AND VEHICLE WASHING SHALL ONLY OCCUR WITH CLEANWATER. THE DISCHARGE SHALL NOT VIOLATE WATER QUALITY STANDARDS.



WARNING: IT IS A VIOLATION OF NEW YORK STATE LAW FOR ANY PERSON, UNLESS ACTING UNDER THE SUPERVISION OF A LICENSED PROFESSIONAL ENGINEER, TO ALTER AN ITEM IN ANY WAY. IF ALTERED, THE ALTERING ENGINEER SHALL AFFIX TO THE DOCUMENT THEIR SEAL AND THE NOTATION "ALTERED BY FOLLOWED BY THEIR SIGNATURE AND THE DATE OF ALTERATION, AND A SPECIFIC DESCRIPTION OF THE ALTERATION."

USL MARINA, LLC OF SANTA CLARA
FISH CREEK PONDS, TOWN OF SANTA CLARA
 4548 NYS ROUTE 30, SARANAC LAKE, NY, 12983

PROJECT NAME
 LOCATION
TOWN OF SANTA CLARA, NY

DATE	ISSUED FOR	REV
5.24.22	APA PERMITTING	
11.15.22	APA UPDATES	A
01.15.24	APA UPDATES	B
03.14.24	APA UPDATES	C

DRAWN BY: JA GARSO
 CHECKED BY: TJ NORTHRUP
 PROJECT #: 20-057
 ORIGINAL 24"x36"

TITLE

OVERLAY PLAN

SHEET
C30



LEGEND

- EXISTING STRUCTURE WITHIN 50' SETBACK, TO REMAIN OR BE REPAIRED ON EXISTING FOOTPRINT
- EXISTING STRUCTURE WITHIN 50' SETBACK TO BE REMOVED
- PROPOSED STRUCTURE WITHIN 50' SHORELINE SETBACK
- OVERLAP OF EXISTING STRUCTURE AND PROPOSED STRUCTURE WITHIN 50' SHORELINE SETBACK
- EXISTING UNCOVERED DOCKS TO BE REMOVED
- PROPOSED UNCOVERED DOCKS NOT SHADED

THE PEOPLE OF THE STATE OF NEW YORK
 Tax parcel 453-1-1

THE PEOPLE OF THE STATE OF NEW YORK
 Tax parcel 453-1-1

CHR. LLC
 Tax parcel 453.03-1-1.1
 7.75± Ac.
 (EXCLUSIVE OF HIGHWAY R.O.W. LIMITS AND UNDERWATER LANDS)

L. 842 PG. 297
 PARCEL II
 INCLUDES LANDS TO THE CENTER OF FISH CREEK PONDS TO NORTH & WEST BOUNDARIES OF BARBOUR 4000 ACRE TRACT



WARNING: IT IS A VIOLATION OF NEW YORK STATE LAW FOR ANY PERSON, UNLESS ACTING UNDER THE SUPERVISION OF A LICENSED PROFESSIONAL ENGINEER, TO ALTER AN ITEM IN ANY WAY. IF ALTERED, THE ALTERING ENGINEER SHALL AFFIX TO THE DOCUMENT THEIR SEAL AND THE NOTATION "ALTERED BY" FOLLOWED BY THEIR SIGNATURE AND THE DATE OF ALTERATION, AND A SPECIFIC DESCRIPTION OF THE ALTERATION.

PROJECT NAME
USL MARINA, LLC
FISH CREEK PONDS, TOWN OF SANTA CLARA
4548 NYS ROUTE 30, SARANAC LAKE, NY, 12983

LOCATION
TOWN OF SANTA CLARA, NY

DATE	ISSUED FOR	REV
5.24.22	APA PERMITTING	
11.15.22	APA UPDATES	A
03.14.24	APA UPDATES	B

DRAWN BY: JA GARSO
CHECKED BY: TJ NORTHRUP
PROJECT #: 20-057
ORIGINAL 24"x36"

TITLE
OVERLAY TABLES

SHEET
C31

EXISTING ELEMENTS WITHIN 50' SETBACK TO REMAIN

TAG	EXIST ELEMENT	EXIST GRADE (FT)	HEIGHT (FT)	FOOTPRINT INSIDE 50' SETBACK (SF)	NOTES
E1	BOAT BARN	1580.5	23.20	674	TO REMAIN
E2	BAIT SHOP	1573.5?	9.23	1994	TO REMAIN
E3	SHED	1474.1	7.18	53	TO REMAIN
E4	PLATFORM	1573.5?	-	311	TO REMAIN
E5	PLATFORM	1574.2	-	94	TO REMAIN
E6	PLATFORM	1578.3	-	85	TO REMAIN
E7	1 STORY HOUSE	1579.3	19.75	173	TO REMAIN
E8	STAIRS	VARIES	-	46	TO REMAIN
E9	STAIRS	VARIES	-	56	TO REMAIN
E10	STAIRS	VARIES	-	30	TO REMAIN
E11	STAIRS	VARIES	-	9	TO REMAIN
E12	STORAGE BUILDING	1578.4	14.50	568	TO REMAIN
E13	UNCOVERED DOCK	1575.5	-	340	TO REMAIN
GRAND TOTAL EXISTING TO REMAIN				4433	

EXISTING ELEMENTS WITHIN 50' SETBACK TO BE REMOVED

TAG	EXIST ELEMENT	EXIST GRADE (FT)	HEIGHT (FT)	FOOTPRINT INSIDE 50' SETBACK (SF)	NOTES
R1	COVERED DOCK	1572.5	14.85	4050	TO BE REMOVED
SUBTOTAL EXISTING COVERED DOCKS TO BE REMOVED				4050	
R1A	UNCOVERED DOCK	1572.5	-	47	TO BE REMOVED
R1B	UNCOVERED DOCK	1572.5	-	101	TO BE REMOVED
R2	UNCOVERED DOCK	1572.5	-	191	TO BE REMOVED, 12' WIDE
R3	UNCOVERED DOCKS	1572.5	-	1654	TO BE REMOVED
R4	UNCOVERED DOCKS	1572.5	-	174	TO BE REMOVED
R5	UNCOVERED DOCK	1572.5	-	383	TO BE REMOVED
R6	UNCOVERED DOCK	1572.5	-	130	TO BE REMOVED
R7	UNCOVERED DOCK	1572.5	-	436	TO BE REMOVED, 22' WIDE
R8	UNCOVERED DOCK	1572.5	-	92	TO BE REMOVED
R9	UNCOVERED DOCK	1572.5	-	215	TO BE REMOVED
R10	UNCOVERED DOCK	1572.5	-	279	TO BE REMOVED, 13' WIDE
R11	UNCOVERED DOCK	1572.5	-	303	TO BE REMOVED
R12	UNCOVERED DOCK	1572.5	-	114	TO BE REMOVED
R13	UNCOVERED DOCK	1572.5	-	119	TO BE REMOVED
R14	UNCOVERED DOCK	1572.5	-	63	TO BE REMOVED
R15	UNCOVERED DOCK	1572.5	-	160	TO BE REMOVED
R16	UNCOVERED DOCK	1572.5	-	64	TO BE REMOVED
SUBTOTAL EXISTING UNCOVERED DOCKS TO BE REMOVED				4525	
GRAND TOTAL EXISTING TO BE REMOVED				8575	

PROPOSED ELEMENTS WITHIN 50' SETBACK

TAG	PROPOSED ELEMENT	EXIST GRADE (FT)	PROPOSED GRADE (FT)	HEIGHT (FT)	FOOTPRINT INSIDE 50' SETBACK (SF)	VARIANCE REQ'D	VARIANCE AREA (SF)	NOTES
P1	UNCOVERED DOCK	1572.5	1572.5	-	2282	NO	-	MAIN DOCK 1
P2	UNCOVERED DOCK	1572.5	1572.5	-	1328	NO	-	UNCOVERED PORTION OF MAIN DOCK 2
P3	UNCOVERED DOCK	1572.5	1572.5	-	1992	NO	-	MAIN DOCK 3
P4	UNCOVERED DOCK	1572.5	1572.5	-	1934	NO	-	MAIN DOCK 4
P5	COVERED PORTION OF DOCK 2	1572.5	1572.5	14	4008	NO	-	PROVIDES ECONOMIC VIABILITY. LESS THAN 4050 SQ FT OF AREA FROM ITEM R1
P6	UNCOVERED DOCK	1572.5	1572.5	-	1183	NO	-	BAIT SHOP DOCK IN FOOTPRINT OF EXISTING DOCK
P7	UNCOVERED DOCK	1572.5	1572.5	-	925	NO	-	CONNECTION DOCK FOR DOCKS 2 AND 3 (ITEMS P2 AND P3)
P8	UNCOVERED DOCK	1572.5	1572.5	-	160	NO	-	ACCESSORY DOCK, IN FOOTPRINT OF EXISTING DOCK (R15)
GRAND TOTAL PROPOSED					13812			

