

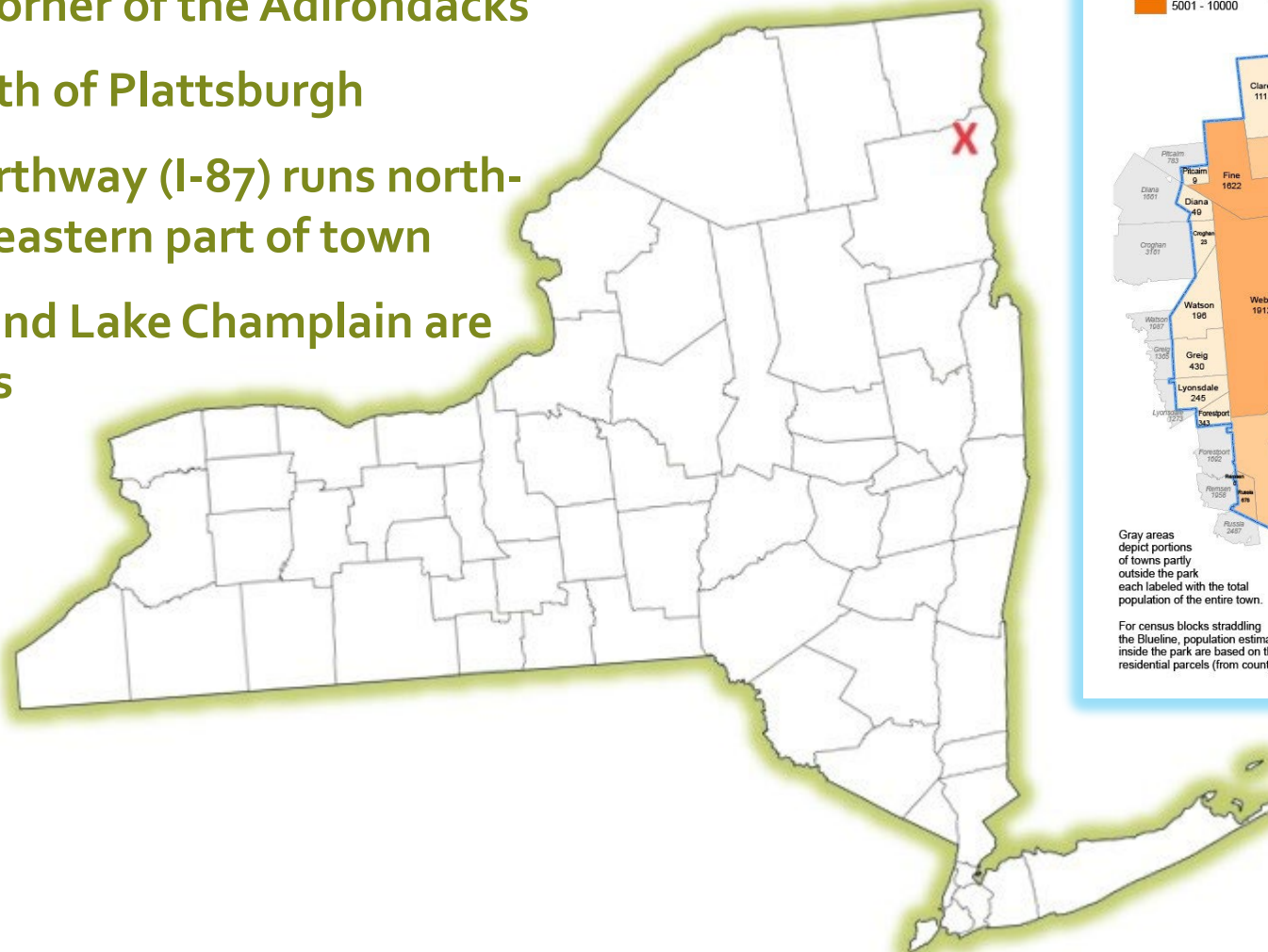


Town of Ausable

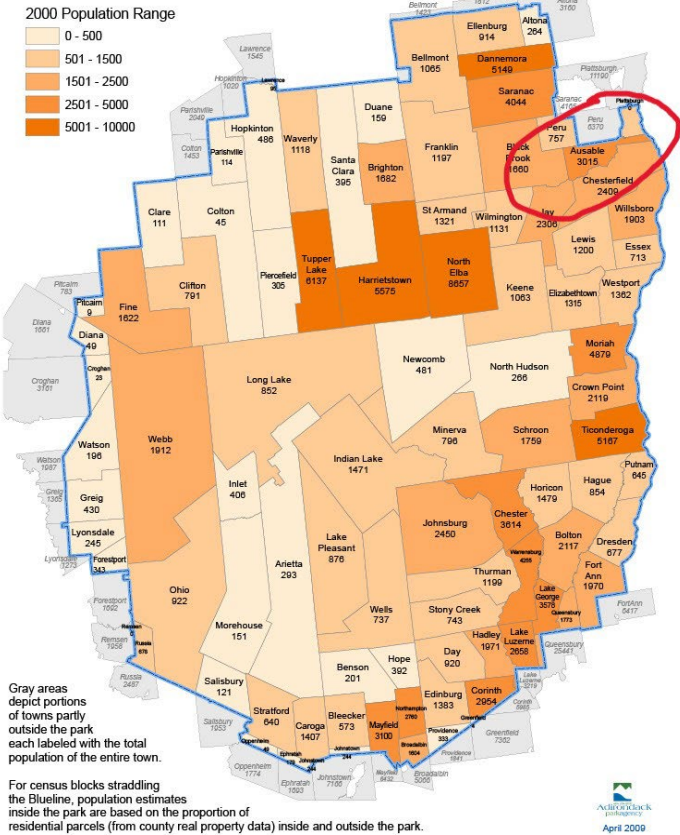
1839

Where is Ausable?

- Northeastern corner of the Adirondacks
- 10 minutes south of Plattsburgh
- Adirondack Northway (I-87) runs north-south through eastern part of town
- Ausable River and Lake Champlain are notable borders



2000 Census Population of Towns Within the Adirondack Park
With Estimates for Census Blocks Straddling the Park Boundary



HAMLETS & POPULATION CENTERS

Harkness, Union & Hallock Hill



- Native people - 12,000 years ago
- Agriculture is most significant
 - Quakers farmers (1787)
 - Orchards
 - Dairy: Adirondack Farms



Clintonville

- Once an incorporated village (1825)
- Prominent for Iron Industry
 - Peru Steel & Iron Co.
- Home of Ausable Valley Central School

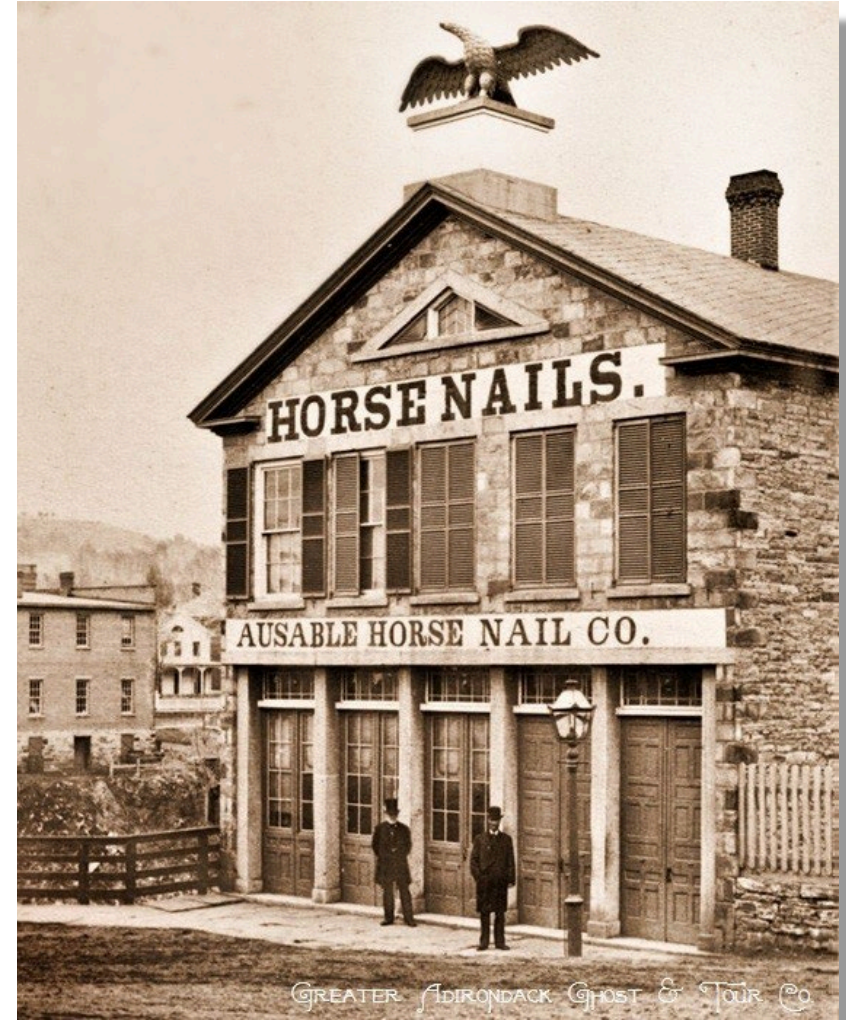


Keeseville

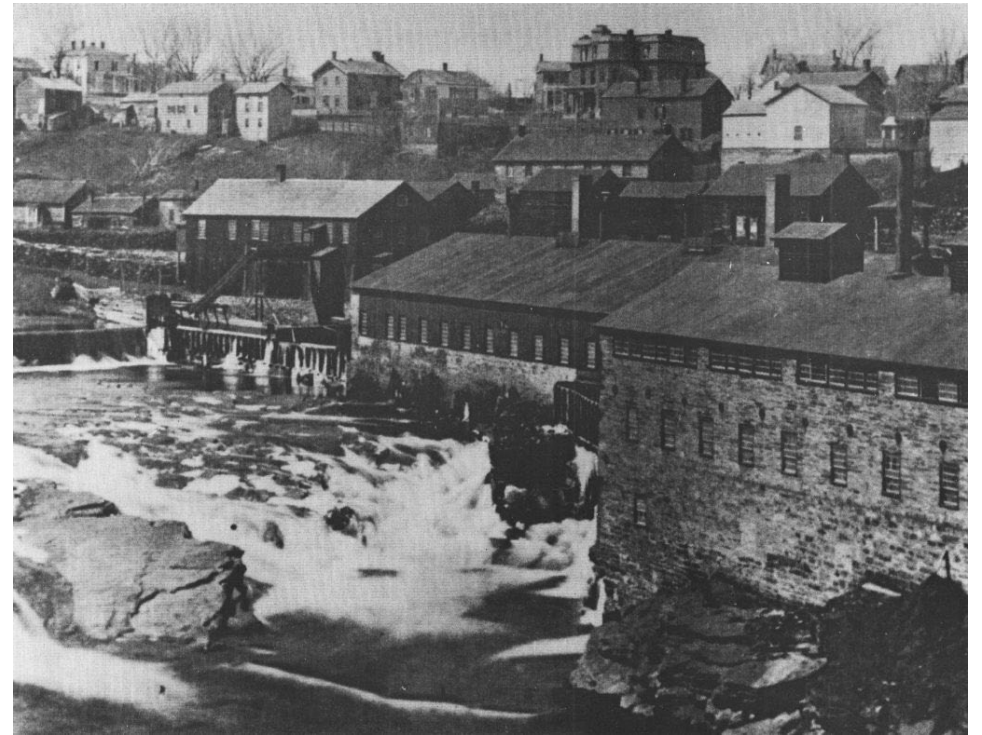
- Originally named “Anderson Falls”
- Early settlers were attracted to the Ausable River’s great waterpower potential
 - Sawmill, grist mill, horseshoe nails
 - 1,600 tons of iron and 1,800 tons of nails produced annually
- Ausable Chasm (1870)
 - Very popular Adirondack tourist attraction
 - Hiking, rafting, tubing, camping, etc.
 - 100,000+/- visitors annually



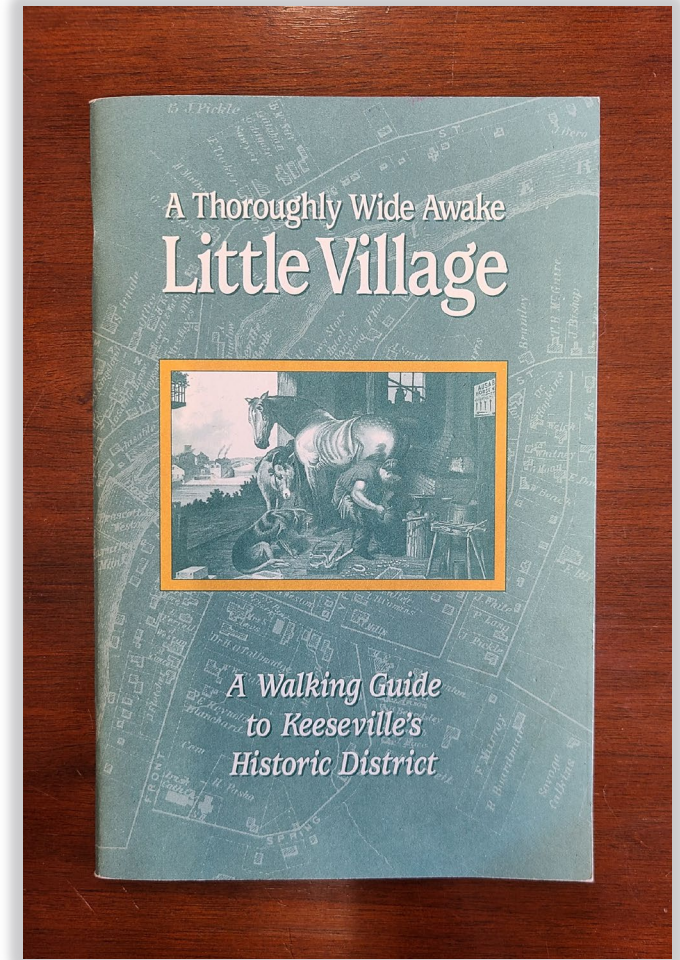
Keeseville



Keeseville – Ausable Chasm



Keeseville



Keeseville - Arts Festival



Keeseville Community
Arts Festival

 **JULY 21-22**

ADKACTION.ORG/ART

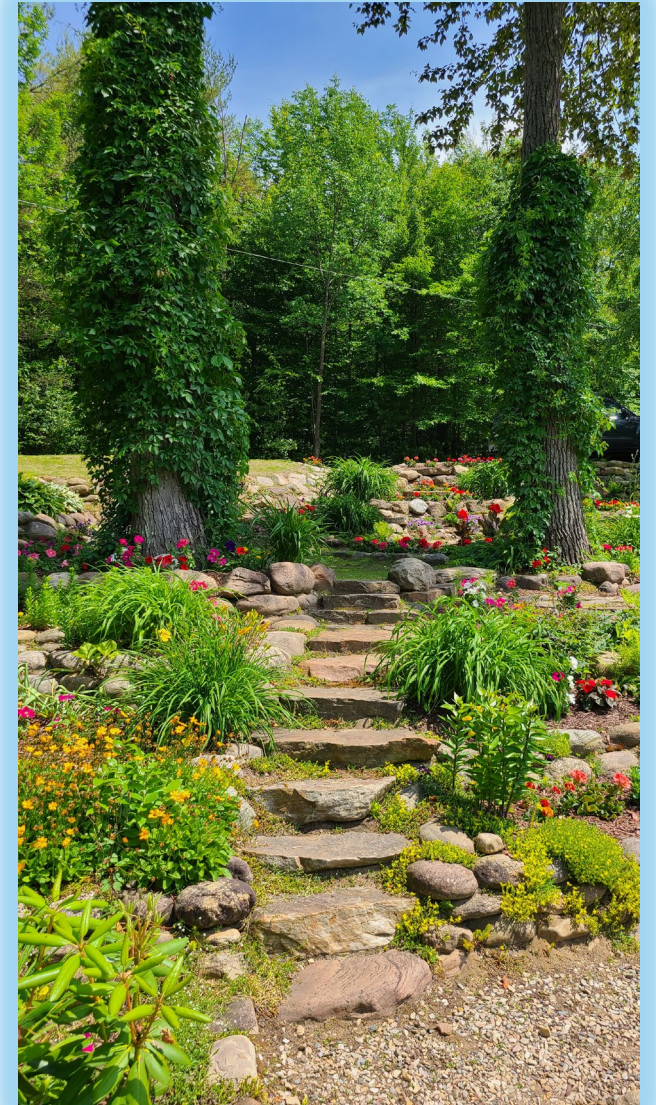
AROUND TOWN

A glance at a few places that make up the
Town of Ausable

Serenity Gardens



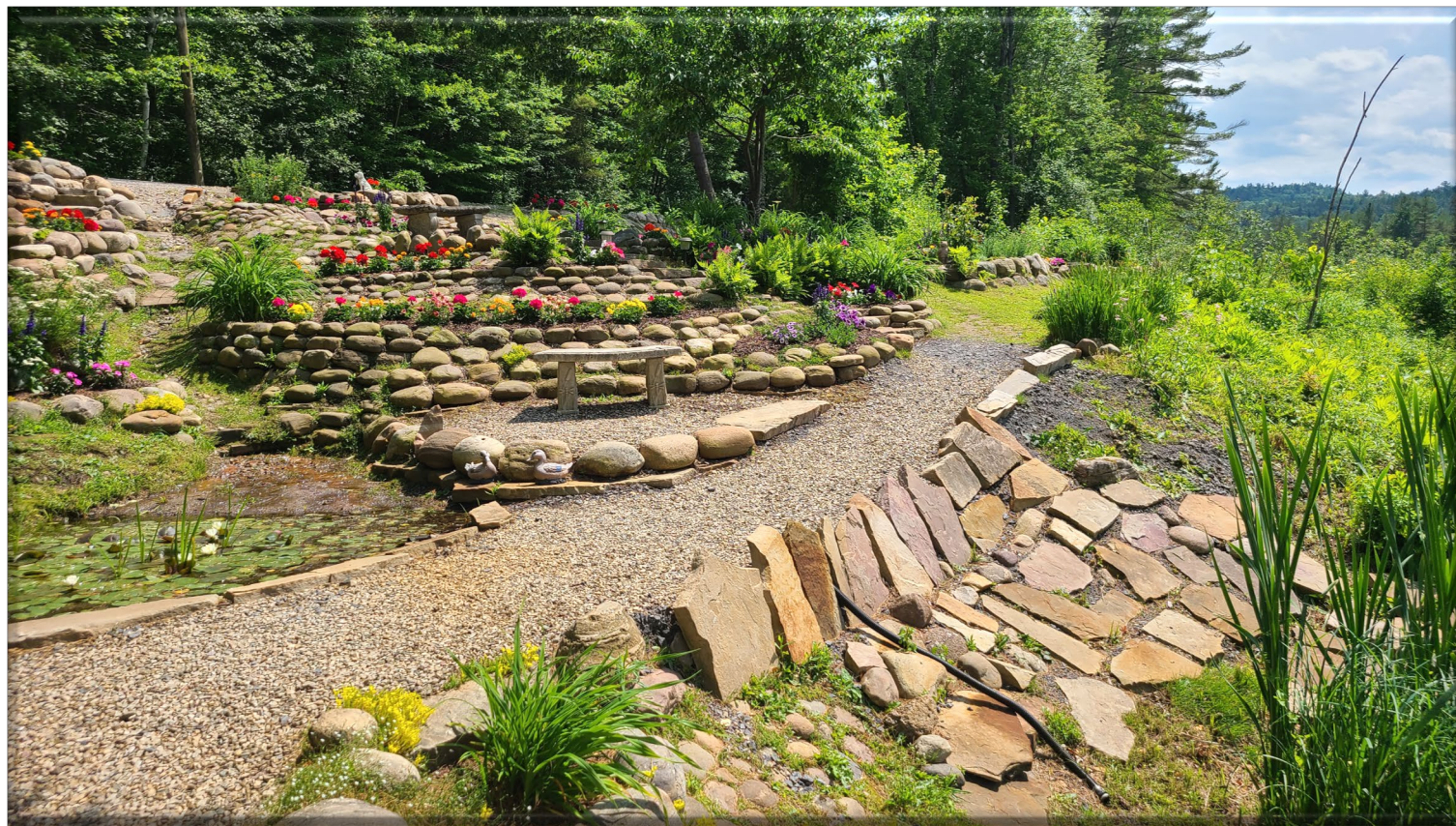
Serenity Gardens



Serenity Gardens



Serenity Gardens



Keeseville Civic Center



Town Highway Garage



Keeseville Volunteer Fire Department



St. John's Church



Port Douglas Beach



Keeseville's Historic Buildings



Ausable River



Ausable River



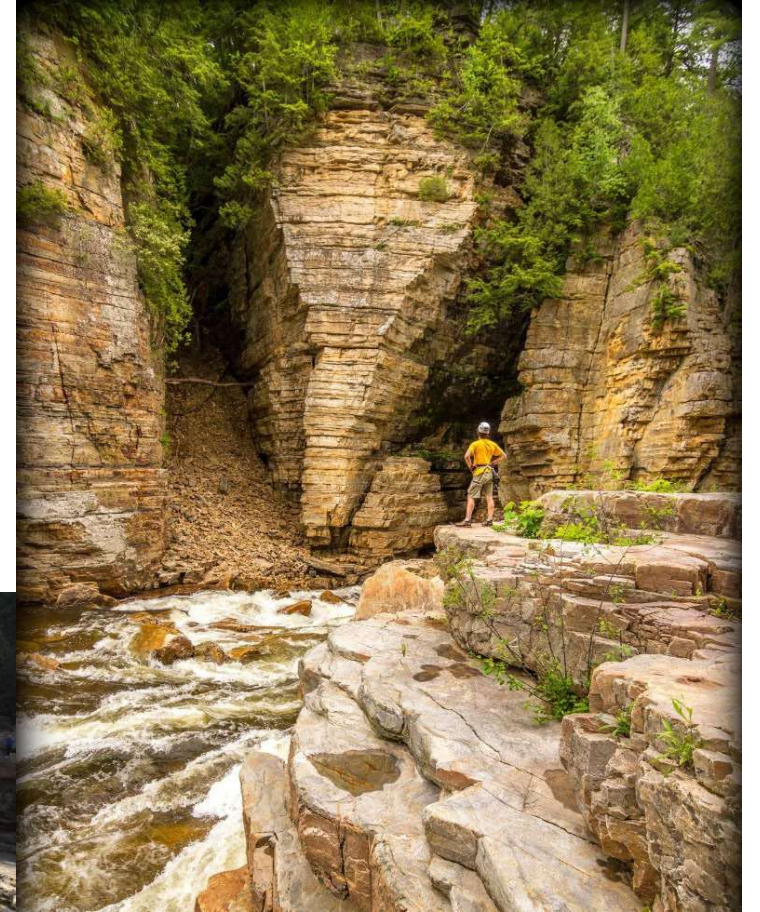
Ausable River



Ausable Chasm



Ausable Chasm





Keeseville, N. Y. Old Arch Bridge.

KEESEVILLE'S HISTORIC BRIDGES

CONNECTING
COMMUNITIES



Arch Bridge

- Built in 1843
- One of the oldest and longest spans of its type in the United States
 - 110 feet long
- Continuously carried traffic since it was built
- Survived many historic floods
 - 1996, 1998, Irene, etc.
- Owned by Clinton County
- National Historic Civil Engineering Landmark (designated 1987)



Swing Bridge

- Built in 1888
- On the National Register of Historic Places
- National Civil Engineering Landmark
- Connects Keeseville - divided by the Ausable River
- Built to serve the working people of Keeseville
- Earlier bridge built in 1840 had undulated movement while walking across that led to its name



Upper Bridge

- Built in 1878
- On the National Register of Historic Places
- National Civil Engineering Landmark
- Longest and Oldest Double Span Metal Pratt Truss Bridge in NY
 - 214 feet long (2x 107')
- Currently Closed



Upper Bridge



Old State Road

- Built in 1890
- Double Span Continuous Pony Pratt Truss Bridge
 - Experimental design (very rare)
- Three remaining bridges of this type in the world
- National Registry of Historic Places
- Civil Engineering Landmark
- One of the best views in Upstate New York
 - Located at Ausable Chasm



Old State Road



Carpenter's Flats

- Built in 1941
- Listed in the National Register of Historic Places in 1999
- Ausable Chasm paid for the bridge
 - To make it easier for tourists to visit
- Recently raised several feet
 - Due to higher river levels - a result of stone/sand deposits following Irene
- Name change in 2024: Captain Christopher J. Garrow Memorial Bridge



Historic Bridges – Ausable Chasm

- Built in 1934
- Rises about 150' above the Ausable River
- Designed by the State of New York Public Works Department
 - 222-foot steel arch
- Funded partly by President Franklin D. Roosevelt's "New Deal"
- Provides stunning views of Rainbow Falls and the Upper Chasm in all four seasons



Ausable Chasm

- Prior to current Route 9 Bridge: Site of Keeseville, Ausable Chasm & Lake Champlain Railroad Bridge from 1890-1927
- Nicknamed the “Peanut Railroad”
- Built to bring tourists to Ausable Chasm and Keeseville from Lake Champlain steamers at Port Kent



CURRENT PROJECTS

Comprehensive Plan

Comprehensive Plan

Mission Statement

“The Town of AuSable will be a community that takes pride in its history, protects and utilizes its beautiful natural environment, is committed to providing superior public services, and is a safe and affordable place to live.”

Town of AuSable

Comprehensive Plan

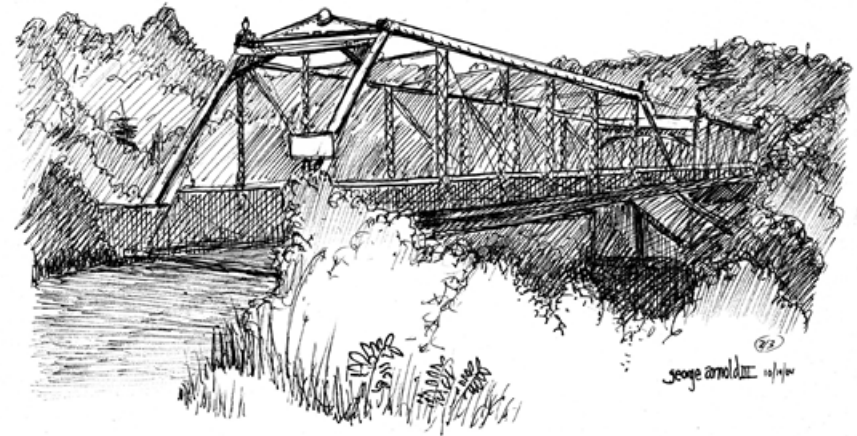


Illustration by George Arnold III

May 2009

Keeseville Civic Center

- Former Keeseville High School
 - Housed village offices, NYS Police, AARCH, amongst others
- Became Town Property following village dissolution in 2015
- Civic Center Committee was formed to rehabilitate the building for mixed use
- Received \$500,000 in Restore NY (round IV) funds to replace the roof and provide an accessible entrance
- Applying for Restore NY (round 8) to replace windows and doors



Keeseville Civic Center

- Community space is needed
- Civic Center Committee raised funds to renovate the gym
 - Moore Foundation
- Bring life back to the building
- Tenants:
 - Cornucopia, mushroom grow
 - North Country Club Pizza
 - DANC
 - COMING SOON: 100.5FM



Keeseville Waterfront Park



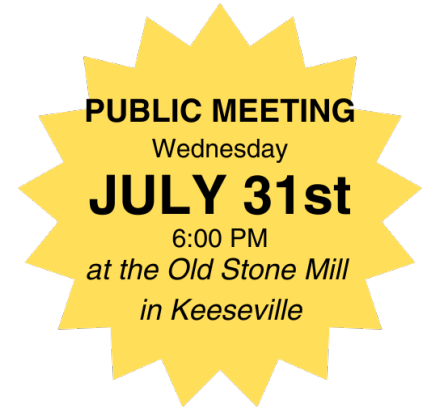
Keeseville Waterfront Park



Keeseville Waterfront Park - View



NY Forward



- Collaboration with Town of Chesterfield, Essex County
- Grant to improve downtown area
 - Streetscapes
 - Business subgrants
- Up to 4.5 million awarded
 - Two or three awards per region
- <https://keesevilleforward.org/>

THANK YOU
