



**Adirondack
Park Agency**

KATHY HOCHUL
Governor

BARBARA RICE
Executive Director

Utilizing Carbon Assessment Data for Informed Project Review

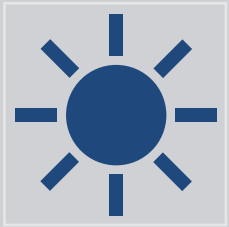
Dr. Lizz Schuyler

June 20th , 2024

Overview

- RASS is tasked with reviewing project proposals that include forest clearing and land conversion for new land use and development
- CAFRI products offer another scientific approach to assess environmental conservation, land use planning, and natural resource management within the Park.





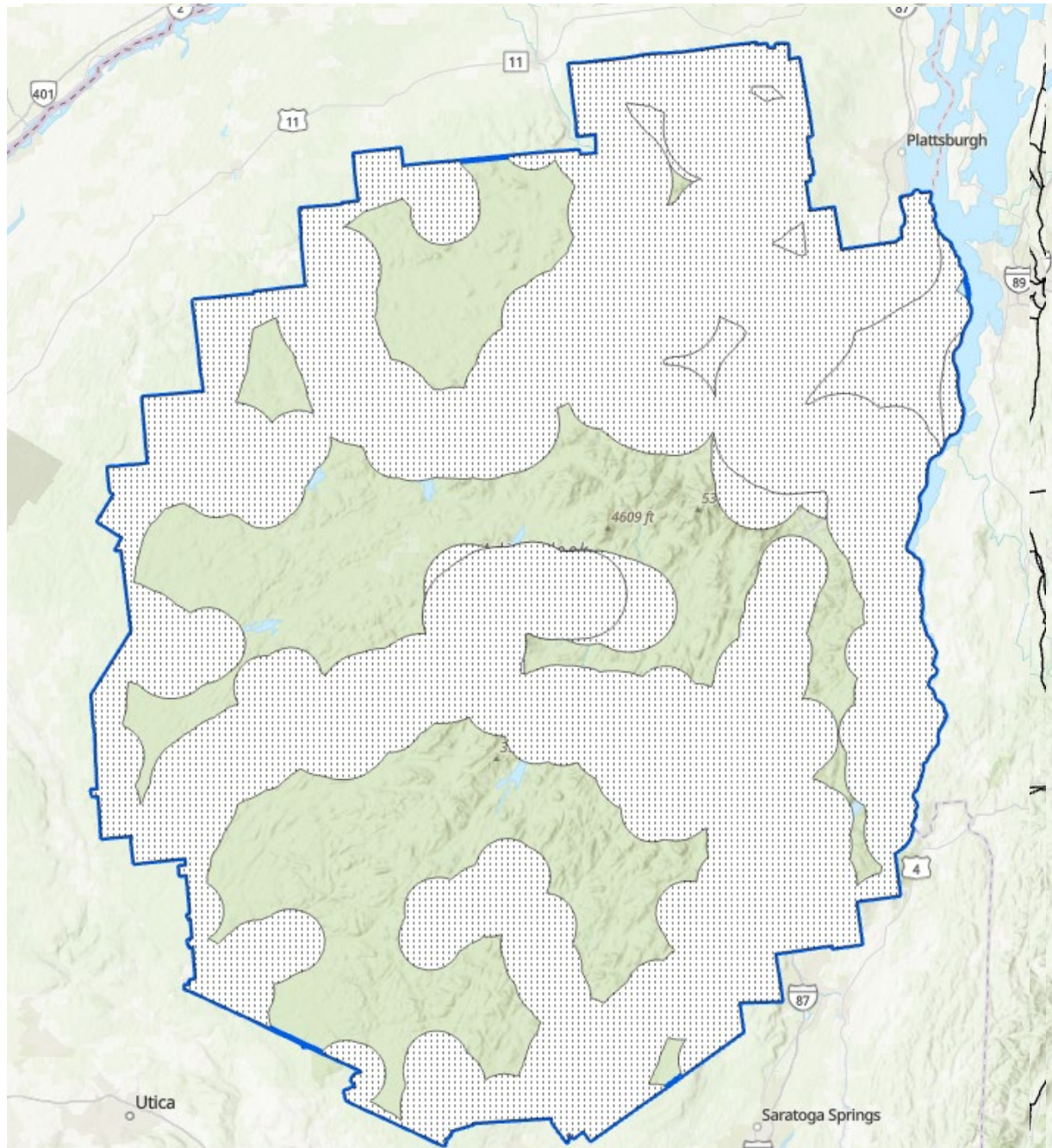
Goal: Develop a scientific approach to assess the impacts of forest conversion in the Adirondack Park.

An Applied Example: Project Review

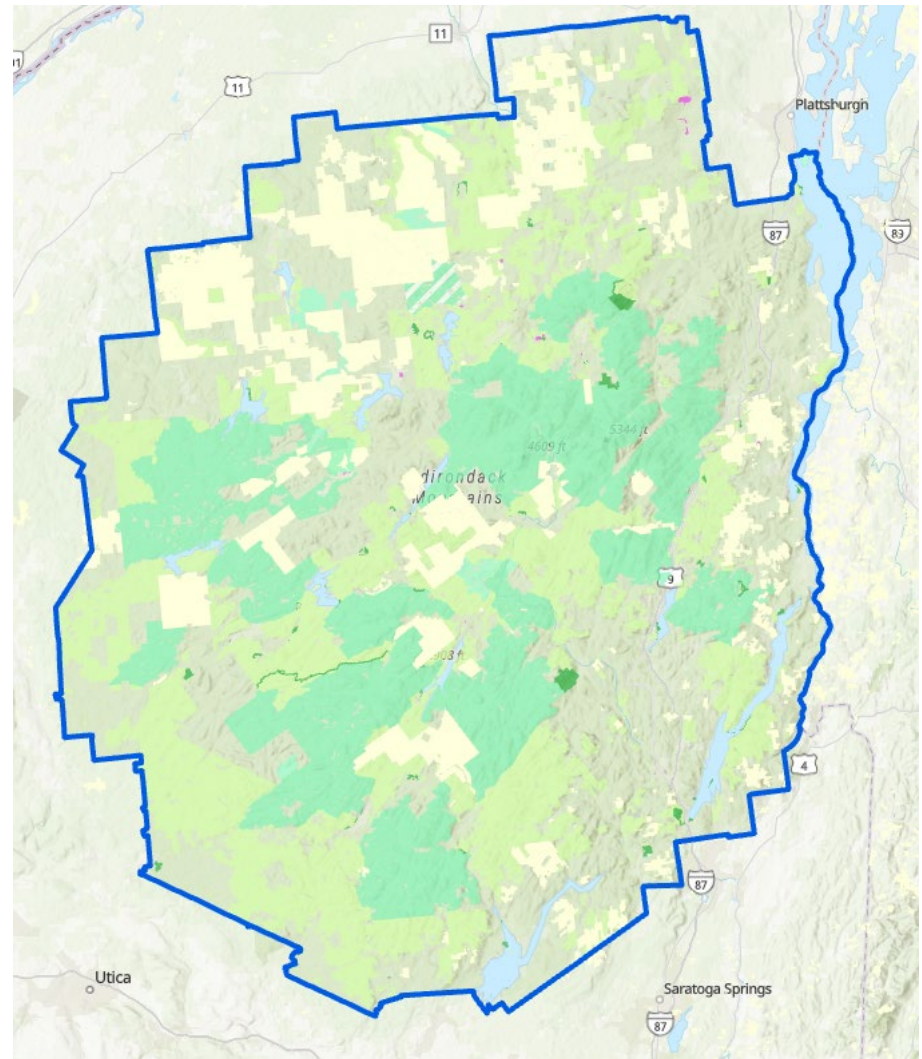
Using CAFRI Products in Desktop Review

- APA review process takes many variables into account
 - Presence of wetlands, elevation, threatened or endangered species, carbon storage
- Rigorous carbon storage analyses require trained professionals and equipment which can be time-consuming and costly
- In the absence of data, generalizations about the carbon value of forests meant all forests were the same in carbon storage
- Now with the CAFRI data, we can learn more about the carbon value of a specific forest at the desktop review stage.

An Applied Example: General Solar Feasibility



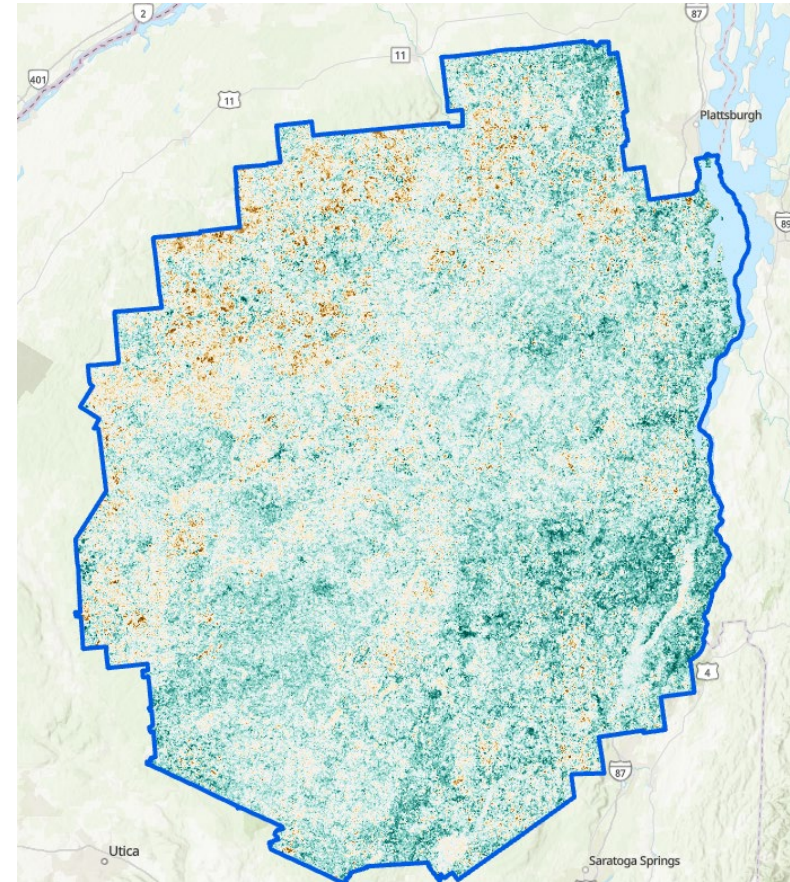
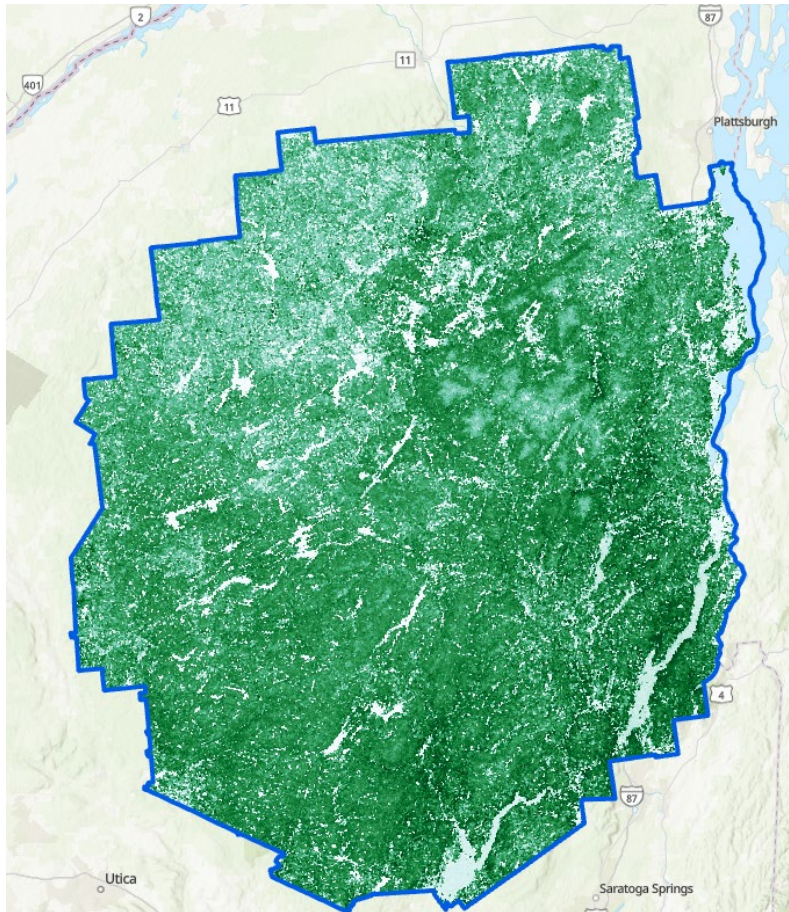
The APA has 37 Development Considerations Within The Park



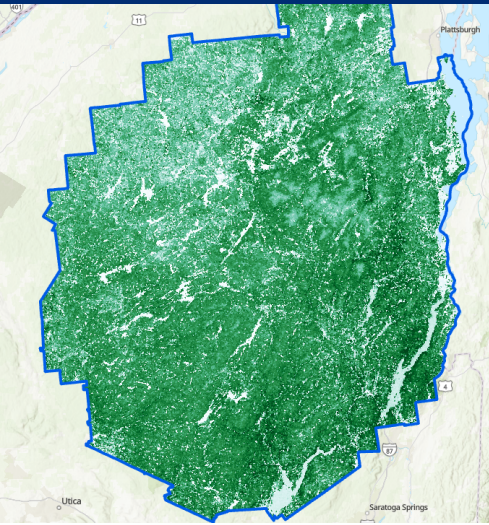
Development Considerations GIS Examples



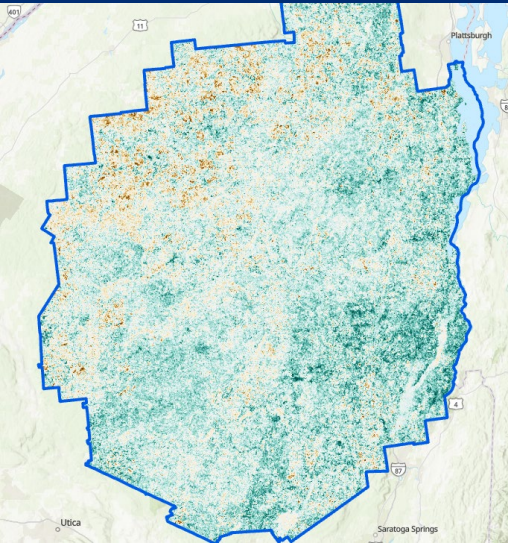
Utilizing Forest Carbon Assessment Data

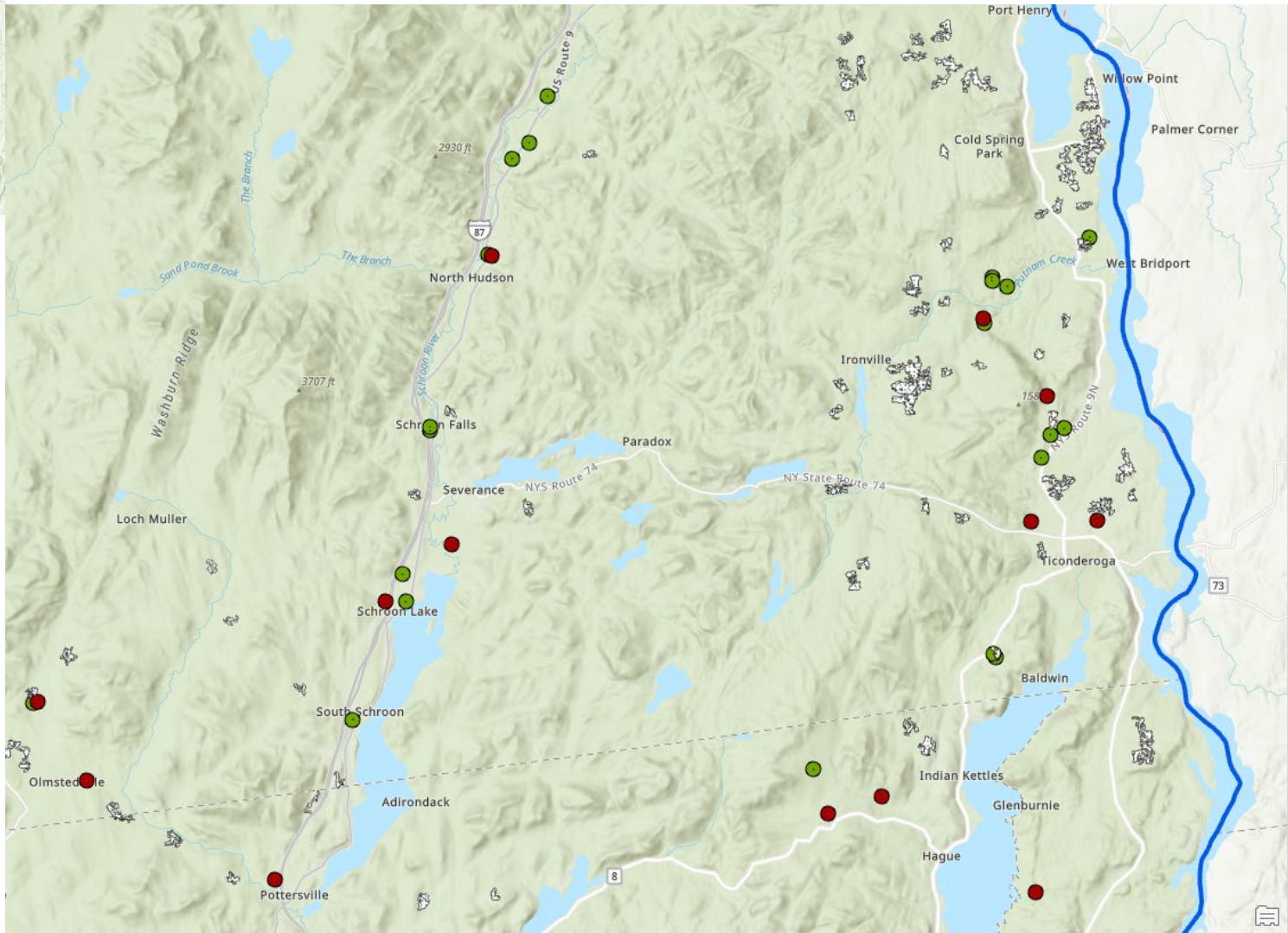
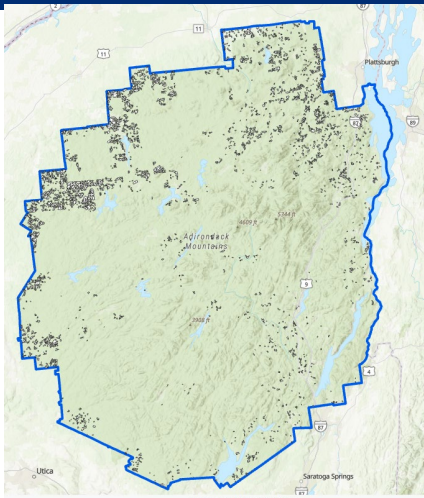


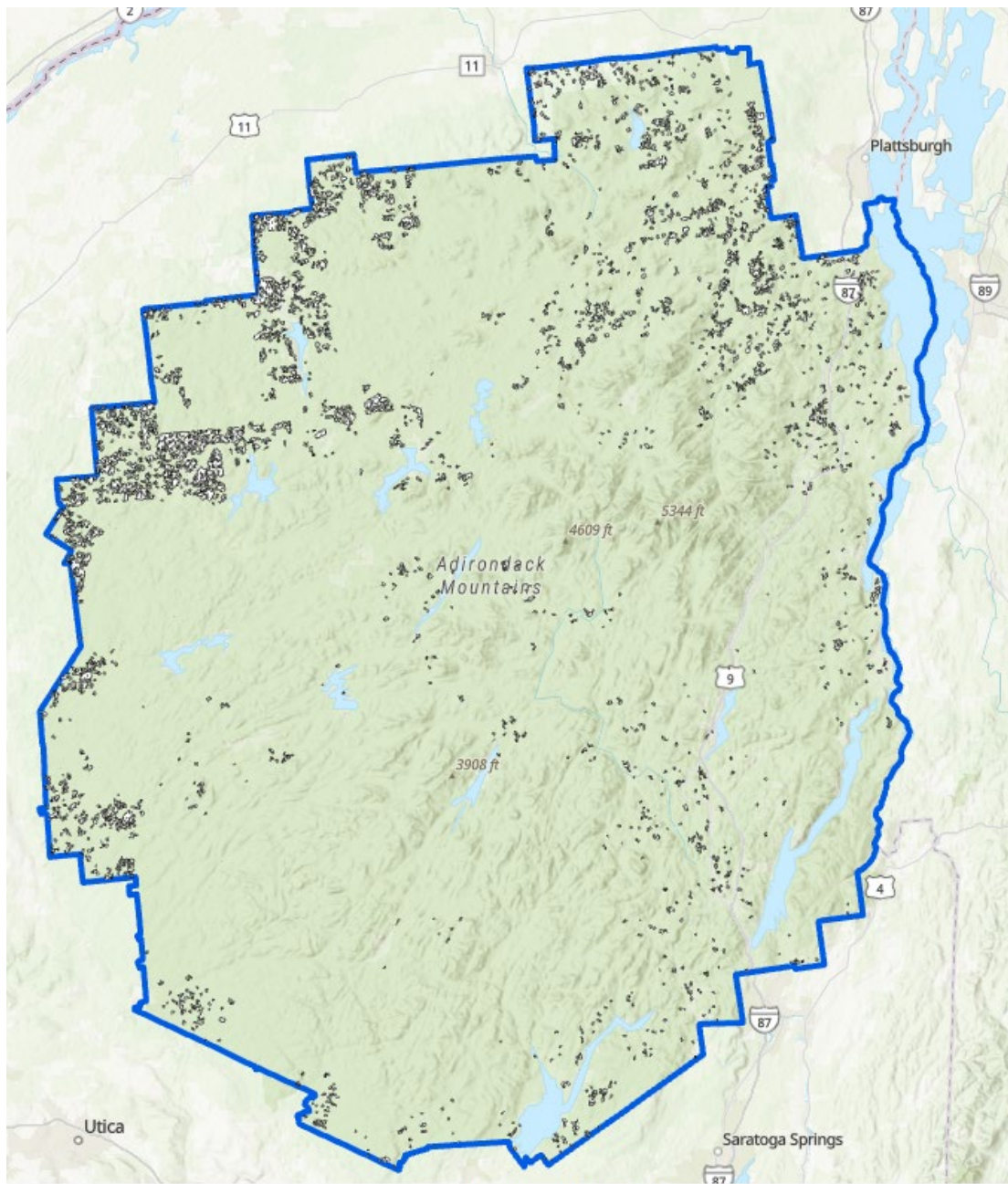
Carbon Storage



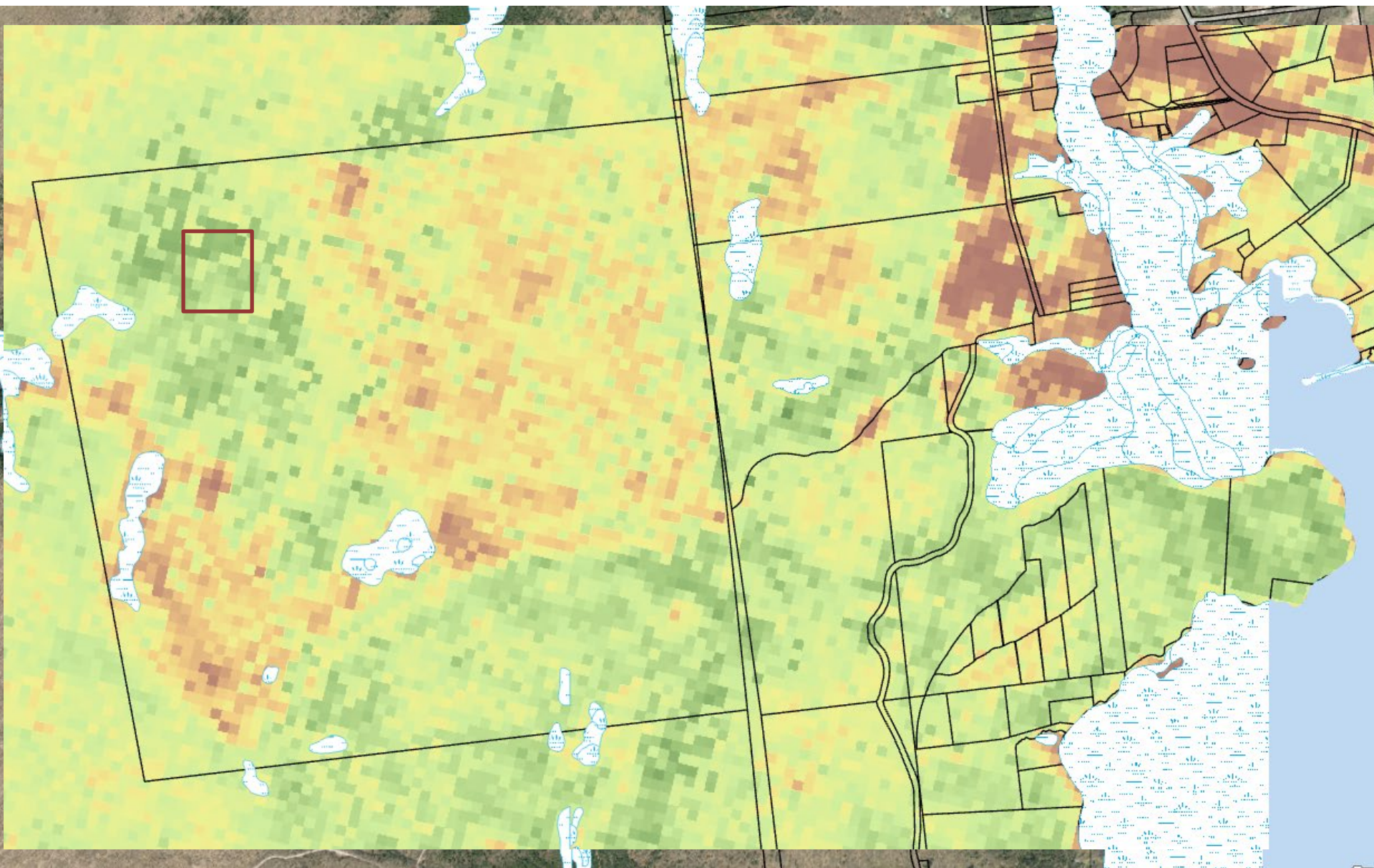
Rate of Carbon Sequestration







An Applied Example: Land Conversion Project Review



**Hypothetical project review of 20-acre land conversion project*

Concluding remarks

- Desktop reviews aid in decision-making but do not replace a site visit
 - Effective tool in a toolbox of many
- Timber permitting is a regenerative activity
 - Focused on long-term land cover conversion
- There is far more value to a forest than carbon storage/sequestration
 - Ecosystem services, biodiversity, resistance/resiliency climate change



**Adirondack
Park Agency**

KATHY HOCHUL
Governor

BARBARA RICE
Executive Director



June 20th , 2024

Questions?