



Department of
Environmental
Conservation

NYSDEC Climate Forestry

CAFRI Assessment: Current & Potential use cases

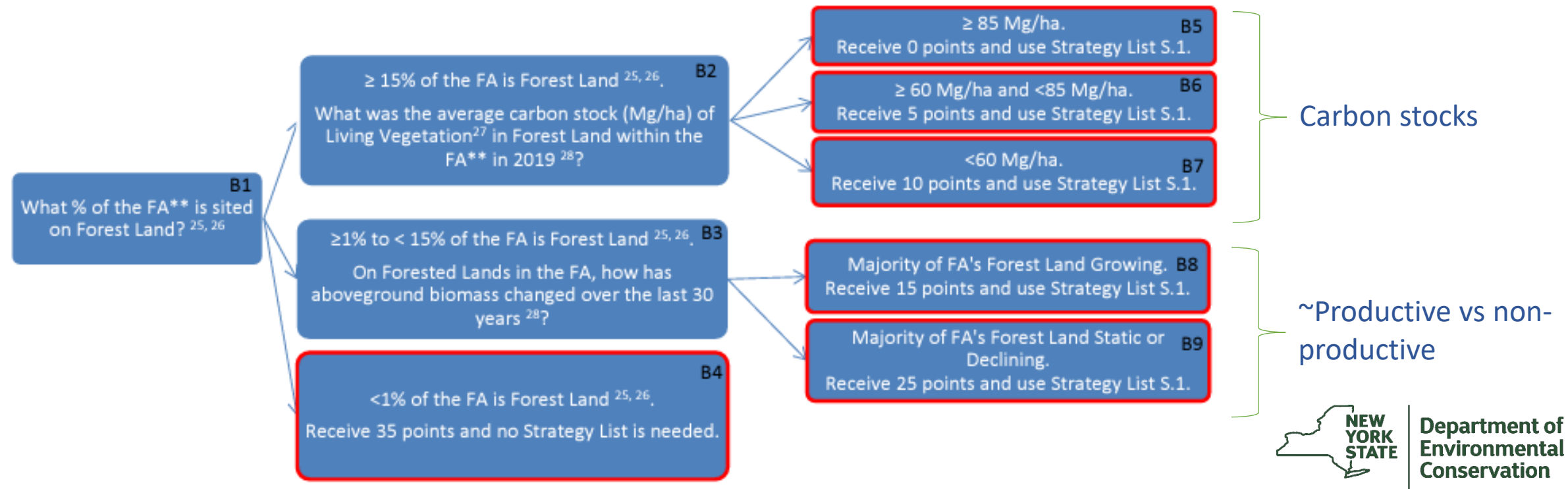
**Ian Crisman,
DEC Lands and Forests, Climate Forestry & Carbon Unit
June 20, 2024**

Current Use Case: NYSERDA Solar Siting Scorecard

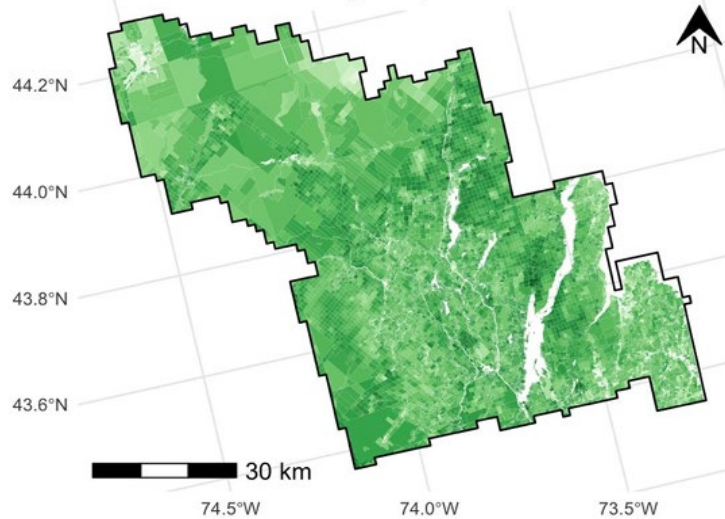
Forested Lands Protection

*Part 1 – Forested Lands Avoidance Flow Chart

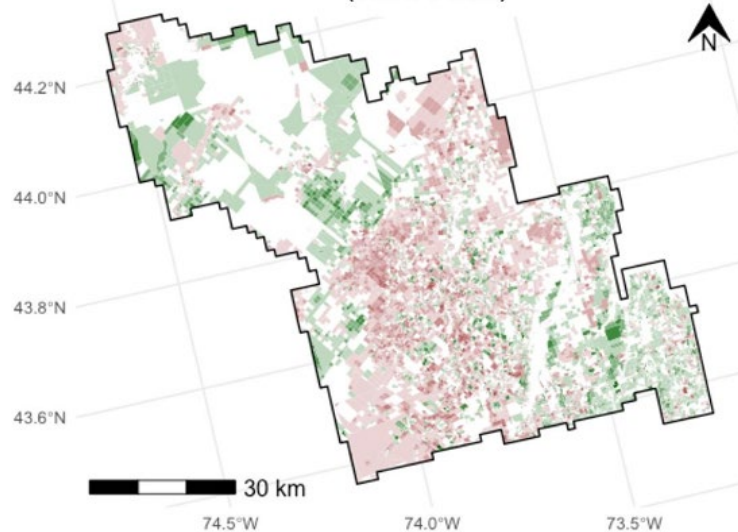
Avoid locating the solar project Facility Area on forested land to prevent impacts to resources or activities of concern.



Parcel-level Carbon Stocks
(2019)



Carbon Stock Changes by Parcel
(1990–2019)

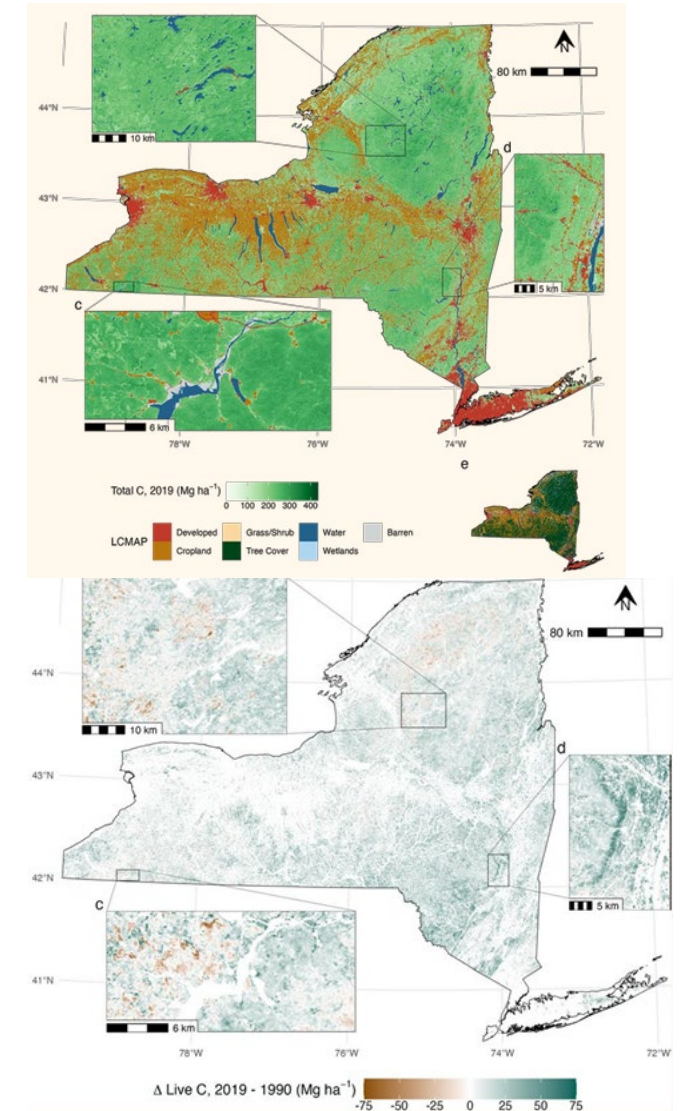


Monitoring Land Use Change

- Conservation easement monitoring
- 480a Tax law program monitoring
- Private Forest Landowner Stewardship planning
- Grant Planning, Implementation, Tracking & Monitoring
- Potential Old Growth ID & Monitoring
- General conservation prioritization & planning efficiency
 - Carbon loss (high-risk areas) tracking
 - Carbon stock density mapping
 - Approximate site productivity

Additional Prioritization

- Prioritize at-risk sites for resilient forest management across landscape
- Prioritize areas for restoration and tree planting statewide
 - CLCPA – Scoping Plan
 - 1.7 mil acres idle land, 680 million trees
 - Reforestation Plan
 - 25 Million Trees



Thank You

Ian Crisman

Forester, Climate Forestry and Carbon Unit
Bureau of Forest Resource Management

Division of Lands and Forests

Ian.Crisman@dec.ny.gov