

SHEEP MEADOW BAY 2022 EURASIAN WATERMILFOIL CONTROL PLAN

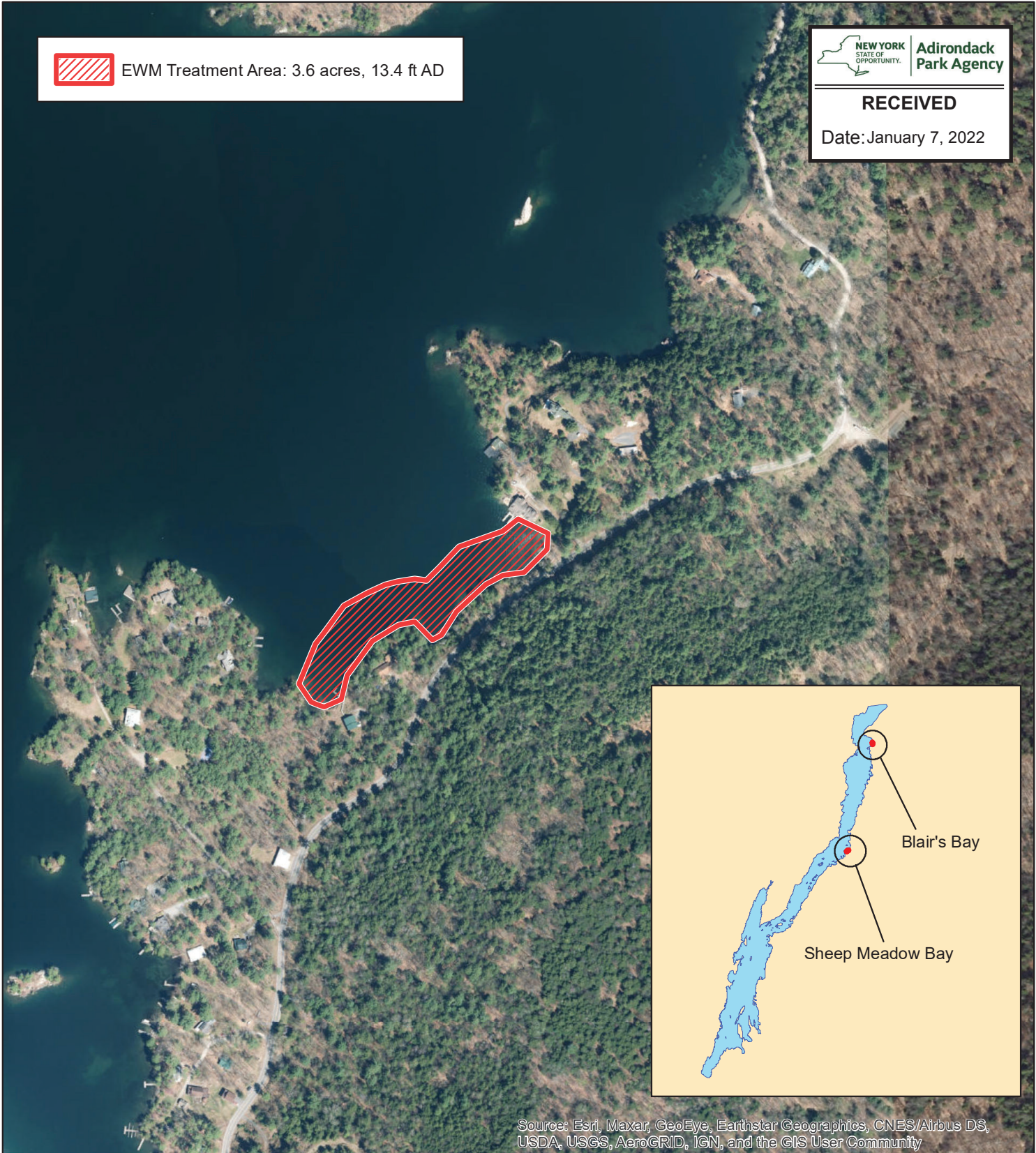


EWM Treatment Area: 3.6 acres, 13.4 ft AD



RECEIVED

Date: January 7, 2022



Source: Esri, Maxar, GeoEye, Earthstar Geographics, CNES/Airbus DS, USDA, USGS, AeroGRID, IGN, and the GIS User Community

Sheep Meadow Bay
Lake George
Warren County, New York
43.651930°, -73.497042°



SHEEP MEADOW BAY LAKE GEORGE

0 320 640
Feet



Date: 11/18/2021
File: George_SheepMeadow_TA_2022
Prepared by: KM
Office: Washington, NJ