



NEW YORK  
STATE OF  
OPPORTUNITY

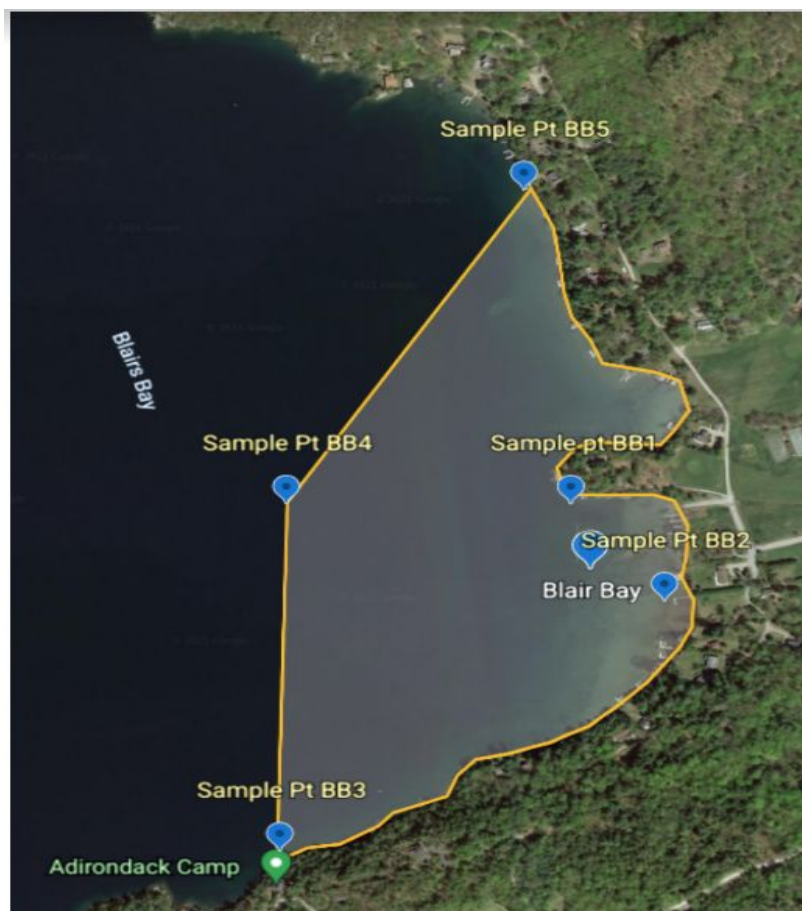
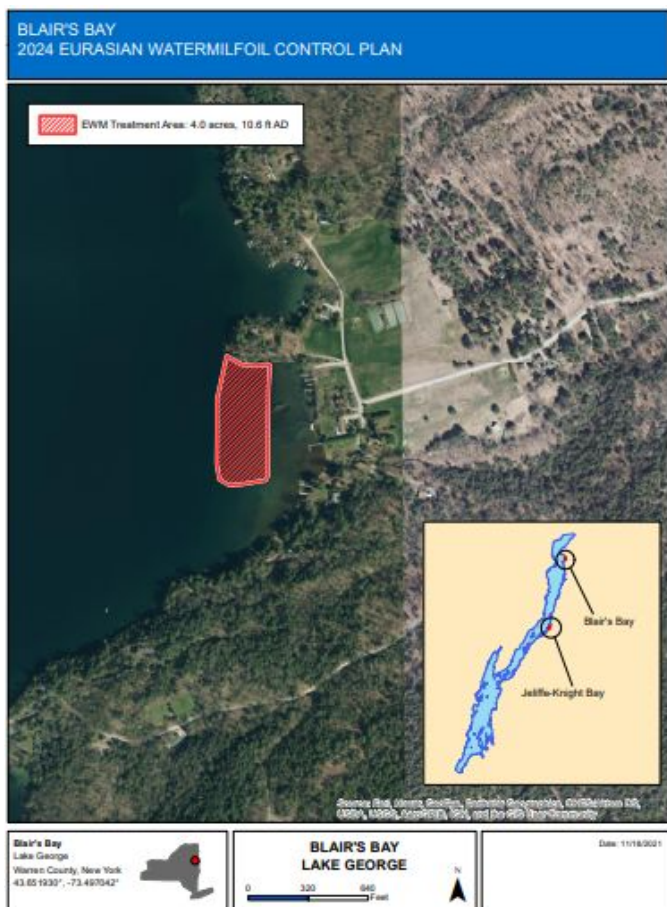
Adirondack  
Park Agency

---

**RECEIVED**

Date: April 17, 2024

## BLAIRS BAY TREATMENT AREA MAP AND SAMPLING MAP



**Competitively Sensitive & Proprietary Materials** – The information contained herein is the intellectual property of SÖLitude Lake Management. Recipient may not disclose to any outside party any proprietary information, processes or pricing contained in this document or any of its attachments without prior written consent of SÖLitude Lake Management. This document is provided to the recipient in good faith and it shall be the responsibility of the recipient to keep the information contained herein confidential.



## ProcellaCOR Residue Monitoring

We plan to utilize the FasTEST sampling procedure that is offered by SePro, the manufacturer of ProcellaCOR, to track the in-lake concentrations of Florpyrauxifen-benzyl following the treatment. After the application of ProcellaCOR the residue sampling schedule will be conducted as follows: 1-3 hours, 10-12 hours, 24 hours, 3 days, 7 days. All sample locations will have one sample collected at elbow depth, by submerging the sample vial upside down and capping while below the surface, and one just above the lake bottom, using a Kemmerer bottle or similar instrument and then transferring to the collection vial in the boat. The contents of the clear sample vial will be transferred to the preserved amber vial and placed in bubble wrap to be overnight shipped to SePro's SRTC lab in Whitakers, NC. Samples will continue to be collected every 7 days until results show a concentration of less than 1 ppb. If the results from samples collected on day 3 are less than 1 ppb, sampling will not be conducted on day 7. If samples BB3, BB4, or BB5 return results that are greater than 1 ppb, additional samples will be collected during the next sample event ~300 feet further into the lake from the corresponding site. To prevent cross-contamination each sample package contains 2 sample bottles, one unpreserved vial for collection and one preserved for transfer and shipping. Once a sample vial is used it will be discarded to a "spent bottle" container and not used for collection again. To minimize the risk of boat hull contamination samples will be collected from sites BB3-BB5 prior to collecting samples from BB1 and BB2.

## Project Familiarity

SOLitude is fortunate to have been the herbicide application contractor conducting large-scale herbicide applications in the Northeast and across the country for over forty years. In addition to our outstanding application performance record, we have a detailed understanding of the needs and expectations of the funding agencies, watershed districts, municipalities, lake associations and regional consults. We have had the opportunity to work closely and effectively with representatives from these entities on previous projects in the region and we have a flawless record of meeting rigorous expectations of those projects. We partnered with ENSR Corporation, to complete the Lake George (NY) Milfoil Control Evaluation, and also completed a Long-Term Vegetation Management Plan for 4,000-acre Saratoga Lake (NY).

## Application Overview

SOLitude understands they will furnish and be responsible for all labor, mobilization, demobilization, materials, equipment and incidentals required to complete the Lake George application; including ProcellaCOR, application equipment, sampling equipment, storage equipment and spill containment equipment. SOLitude will be responsible for transport to the project staging area and the application to the lake from a custom application vessel. All application equipment is integrated with GPS tracking to ensure a uniform and verifiable application area and rate. SOLitude will also be responsible for traffic management, restoring the staging area to pre-project conditions, submitting daily logs and maintaining a secure staging area.

