

# Highlands Forge Lake – 2024 & 2025 ProcCellaCOR EC Sampling Plan

(S/D = Shallow & Deep samples)

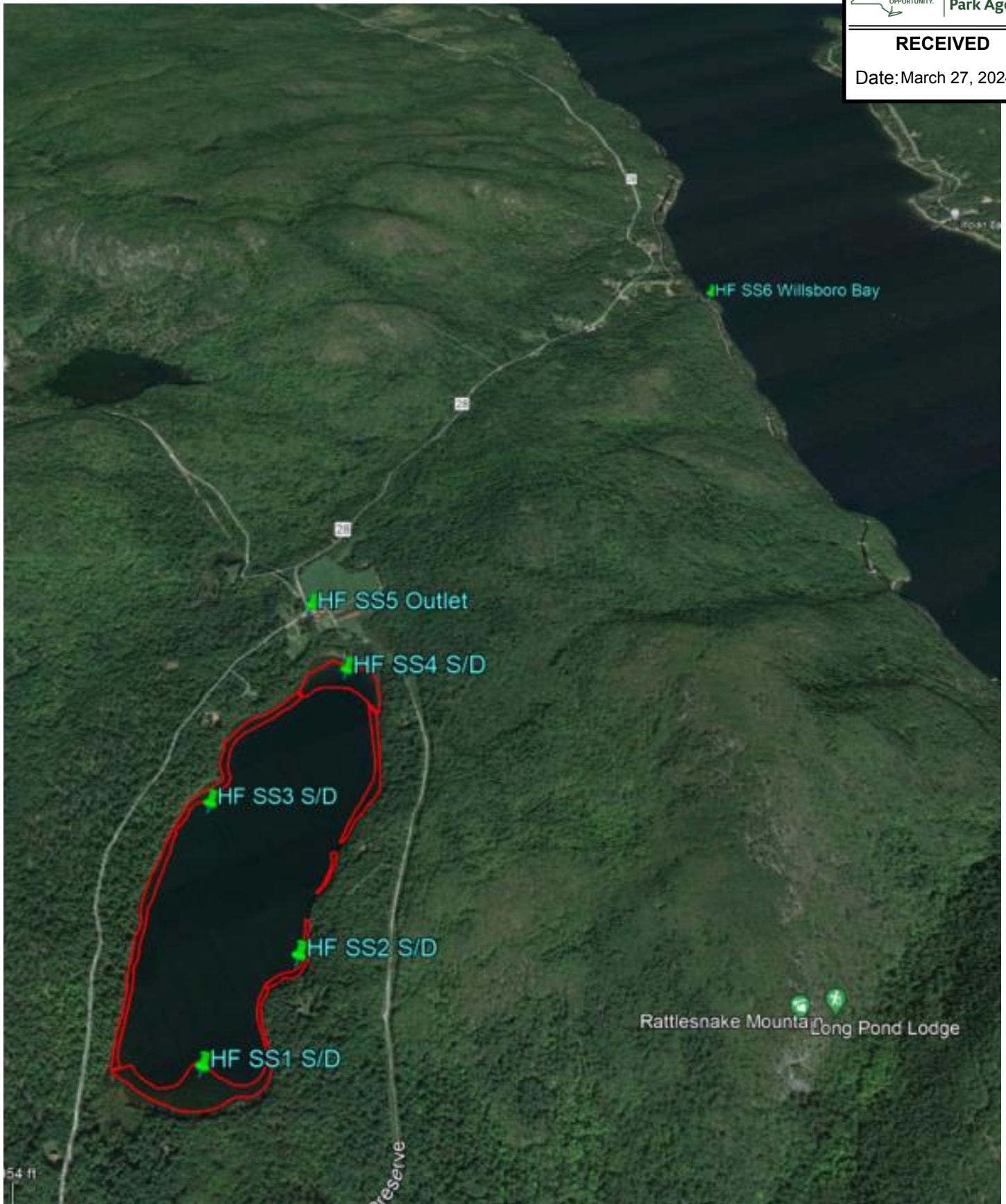
NEW YORK  
STATE OF  
OPPORTUNITY

Adirondack  
Park Agency

---

**RECEIVED**

Date: March 27, 2024



## **Sample location coordinates & Sampling Years**

HF SS1 - 44°24'20.44"N, 73°26'54.35"W - 2025

HF SS2 - 44°24'25.41"N, 73°26'41.39"W – 2024 & 2025

HF SS3 - 44°24'42.12"N, 73°26'42.22"W – 2024 & 2025

HF SS4 - 44°24'50.94"N, 73°26'19.58"W – 2024

HF SS5 - 44°25'0.31"N, 73°26'18.62"W - 2024 & 2025

HF SS6 - 44°25'37.53"N, 73°24'35.38"W - 2024

Depth samples at sites SS1 & SS4 will be collected in 5-8' of water. Depth samples at sites SS2 & SS3 will be collected in at least 10' of water, and approximately 1' off the bottom.

## **Collection schedule**

After application, samples will be collected at each site on the following schedule:

6-8 hours, 1 day, 3 days and 7 days after treatment

Samples at each site will continue to be collected every 7-14 days until lab analysis confirms that the ProcellaCOR EC concentration is below 1 ppb in all of the samples collected during a single sampling event. If results from all samples collected 3 days after application are below 1ppb, sampling will not be conducted 7 days after application.

## **Sampling protocol**

The following manufacturer sampling protocol will be followed: For ProcellaCOR FasTEST use the clear glass vial to collect the sample. Submerge the bottle upside down until elbow deep. Cap the clear glass vial underwater. (Depth samples will be collected using a Kemerer or similar bottom sampler) The contents of the clear vial should be transferred to the amber glass vial until completely filled to preserve the sample. Place the amber vial in bubble wrap sleeve to protect the glass vial during shipping, and overnight all samples to SePRO's SRTC lab in Whitakers, NC. If samples are collected on a Friday, store samples in a refrigerated area, and ship samples on Monday.

Samples will also be collected from near-bottom at the lake sampling sites. The near-bottom samples will be collected using a Kemerer bottle or similar instrument and transferred to the collection vial in the boat.

## **Cross-contamination prevention**

Each sample collected contains two bottles - one unpreserved bottle for collection and one preserved bottle for transfer and shipping. Once used, collection bottles are moved to a "spent bottle" container and not reused for other sample sites.

There is no method to prevent contamination of the boat hull when moving from site to site, and given the low herbicide concentration range, the possibility of boat contamination leading to a sample result of >1ppb can't be dismissed.