

**PEDESTRIAN BRIDGE SPECIFICATIONS:**

- BRIDGE TYPE: Glulam with steel connectors by Unalam or equal. Contact @ Unalam, Liz Conner CE Coordinator & Sales 607-369-9341 or lconner@unalam.com.
- WIDTH: 5'-0" Clear between main beams.
- LIVE LOAD: 90psf.
- DEAD LOAD: Approximately 12,000lbs.
- FINISH: Penetrating Sealer.
- DECKING: CCA 4" 2 x 6 square edge.
- RAILING TYPE: Horizontal safety rails with 4" maximum openings.
- RAILING HEIGHT: 48" above deck surface.
- WOOD SPECIES: Southern yellow pine, AITC architectural grade.
- WOOD ADHESIVE: Exterior resorcinol type to withstand long-term immersion and high resistance to ultraviolet light.
- STEEL: All steel shall be ASTM Grade A-36 hot dip galvanized.
- HARDWARE: All bolts shall be ASTM A-307, Grade A; nuts shall be ASTM A-563. Lag bolts shall be in conformance with ANSI/ASME Standard B18.2.1
- ERECTION AND INSTALLATION OF BRIDGE: Bridge mfr. is responsible for delivery, unloading and installation of bridge.
- Standard industry erection procedures shall be followed.

**ADDITIONAL ITEMS:**

- Coordinate delivery route with bridge sections and include required permits.
- Coordinate any testing or special inspections.
- Field verify anchor bolt placement/size, including field measurement of new abutments.

246.-1-56  
Area = 5.42± Acres

246.-1-50  
Area = 4.34± Acres

**FOOTPRINT CALCULATIONS:**

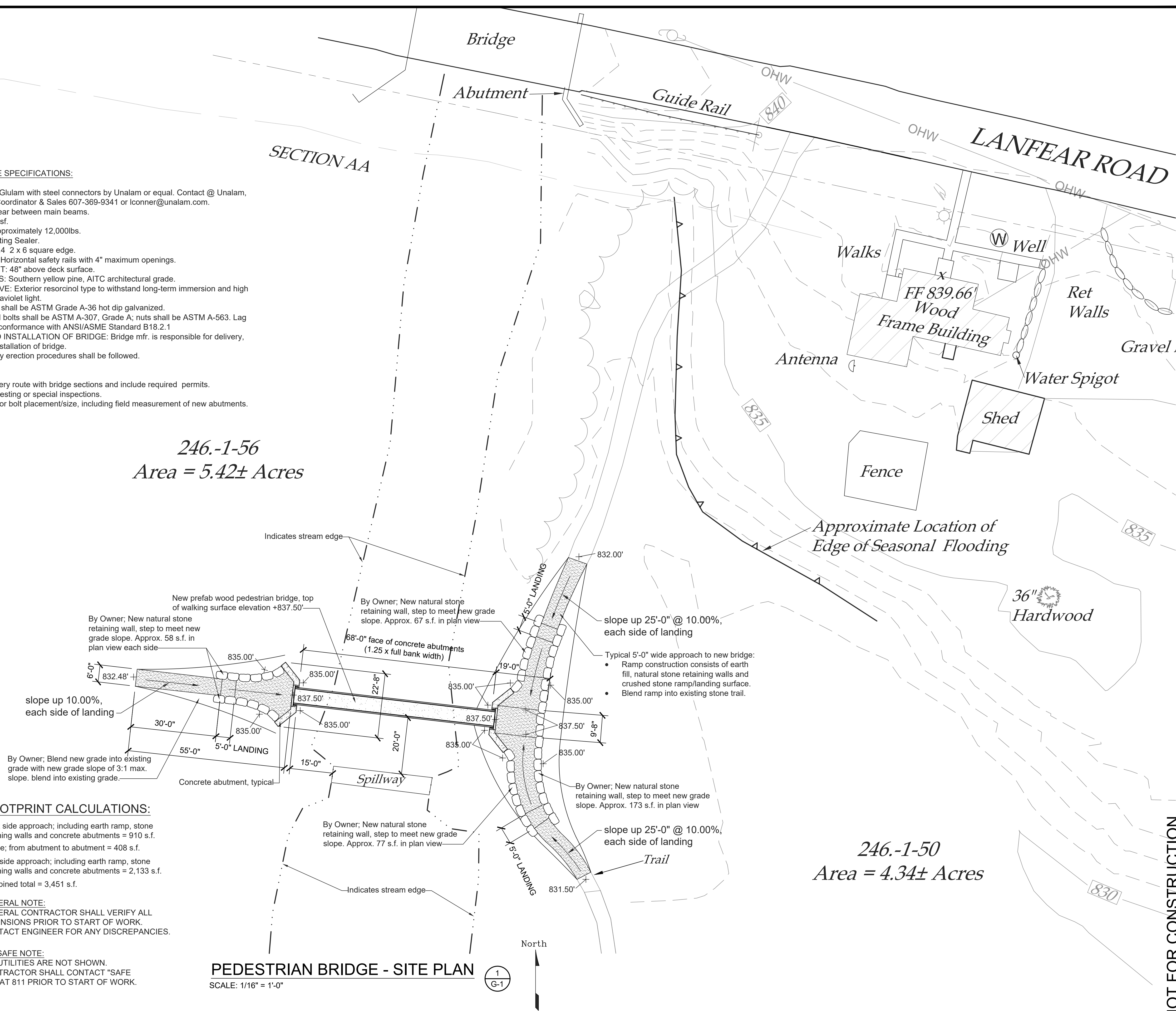
West side approach; including earth ramp, stone retaining walls and concrete abutments = 910 s.f.  
 Bridge; from abutment to abutment = 408 s.f.  
 East side approach; including earth ramp, stone retaining walls and concrete abutments = 2,133 s.f.  
 Combined total = 3,451 s.f.

**GENERAL NOTE:**  
 GENERAL CONTRACTOR SHALL VERIFY ALL DIMENSIONS PRIOR TO START OF WORK.  
 CONTACT ENGINEER FOR ANY DISCREPANCIES.

**DIG SAFE NOTE:**  
 ALL UTILITIES ARE NOT SHOWN.  
 CONTRACTOR SHALL CONTACT "SAFE DIG" AT 811 PRIOR TO START OF WORK.

**PEDESTRIAN BRIDGE - SITE PLAN**

SCALE: 1/16" = 1'-0"



NOT FOR CONSTRUCTION

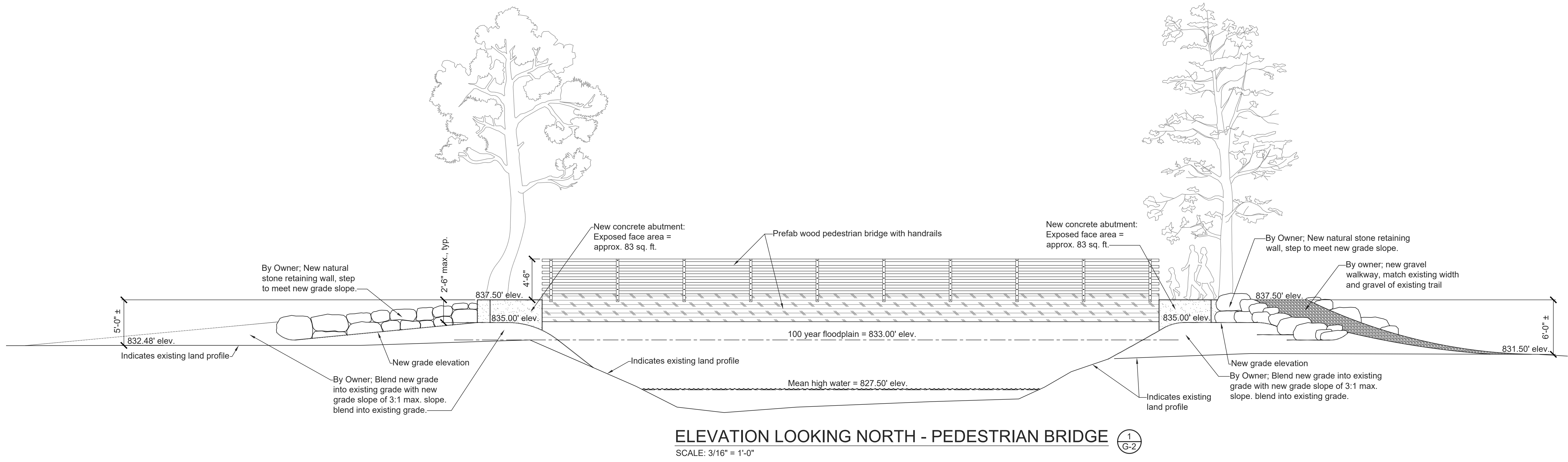
NO.	DATE	DESCRIPTION

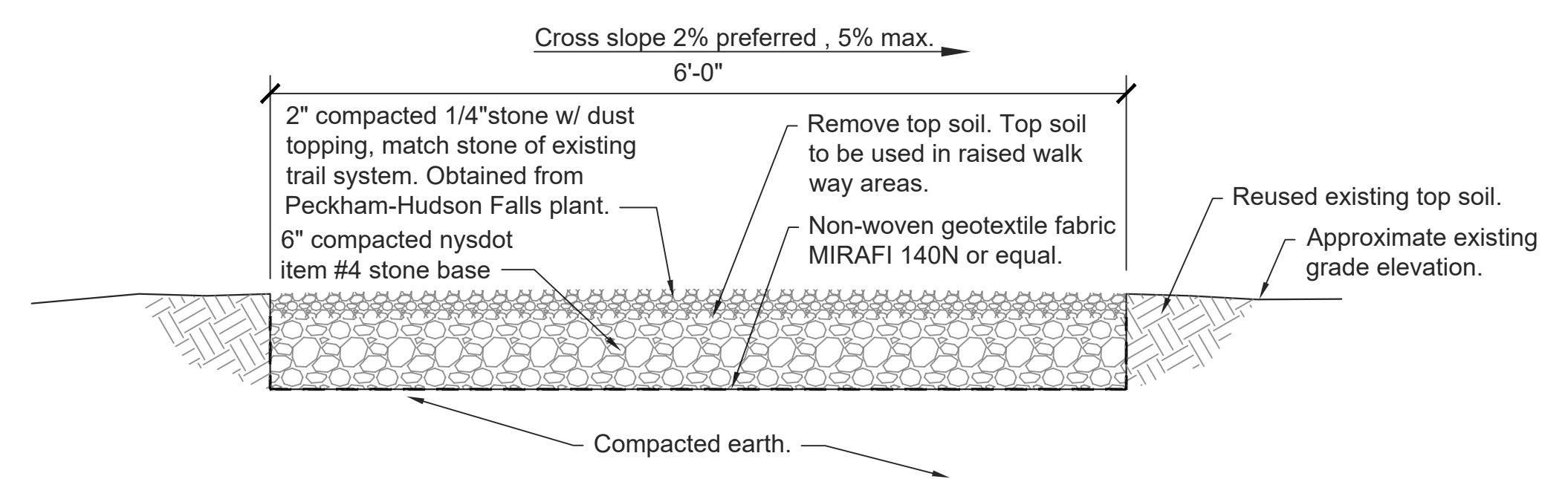
PROJECT INFORMATION:	DATE: 4/26/20
SCALE: 1/16" = 1'-0"	DESIGNED BY: GF
DRAWN BY: JLC	REVIEWED BY: TS
PROJECT NO.: 18-018	SHEET:

TOWN OF STONY CREEK, NY  
 52 HADLEY ROAD, STONY CREEK, NY  
 STONY CREEK  
 WARREN COUNTY  
 NEW YORK

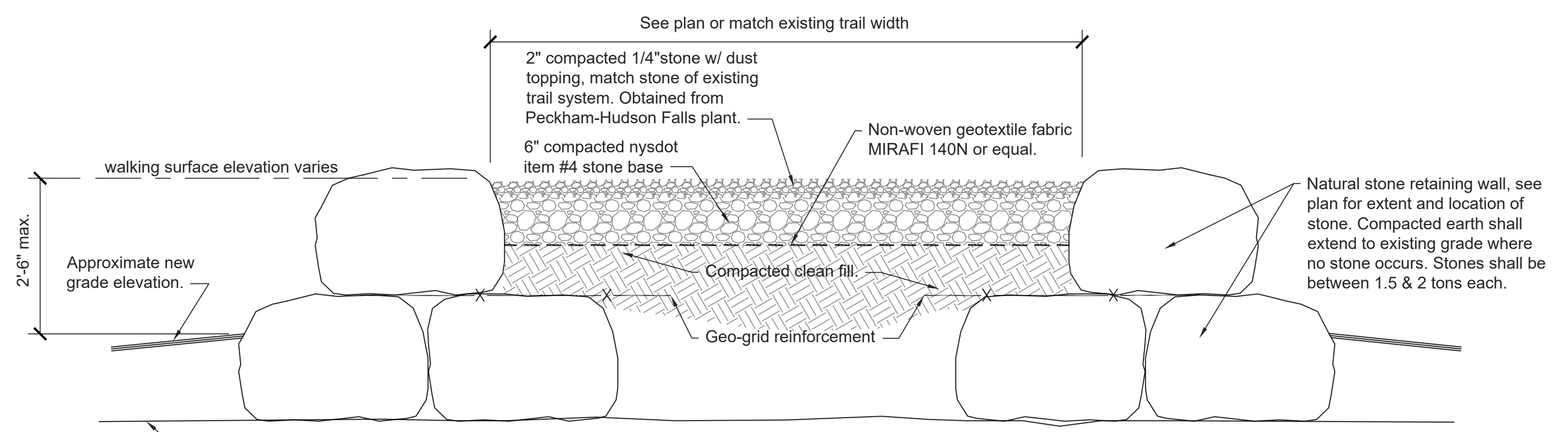
NEW PEDESTRIAN BRIDGE  
 PEDESTRIAN BRIDGE PLAN



**ELEVATION LOOKING NORTH - PEDESTRIAN BRIDGE** 1  
G-2  
SCALE: 3/16" = 1'-0"



**BY OWNER: TYPICAL WALKWAY SECTION** 2  
G-2  
SCALE: 1" = 1'-0"



**BY OWNER: TYPICAL RAISED WALKWAY SECTION** 3  
G-2  
SCALE: 1" = 1'-0"

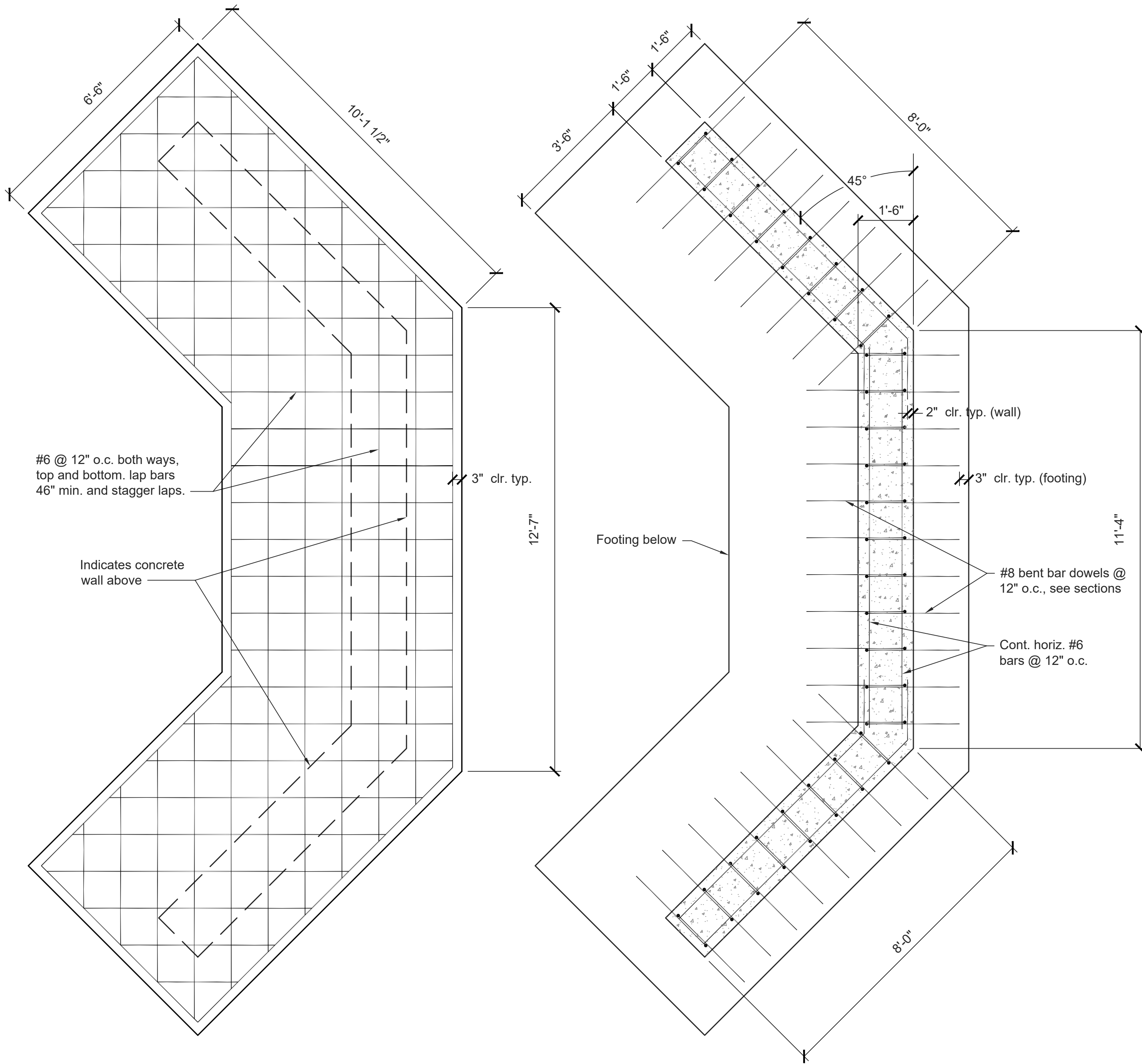
NOT FOR CONSTRUCTION

PROJECT INFORMATION:	
DATE:	4/26/20
SCALE:	1/16" = 1'-0"
DESIGNED BY:	GF
DRAWN BY:	JLC
REVIEWED BY:	TS
PROJECT NO.:	18-018
SHEET:	

REVISIONS:	
NO.	DATE:
DESCRIPTION:	

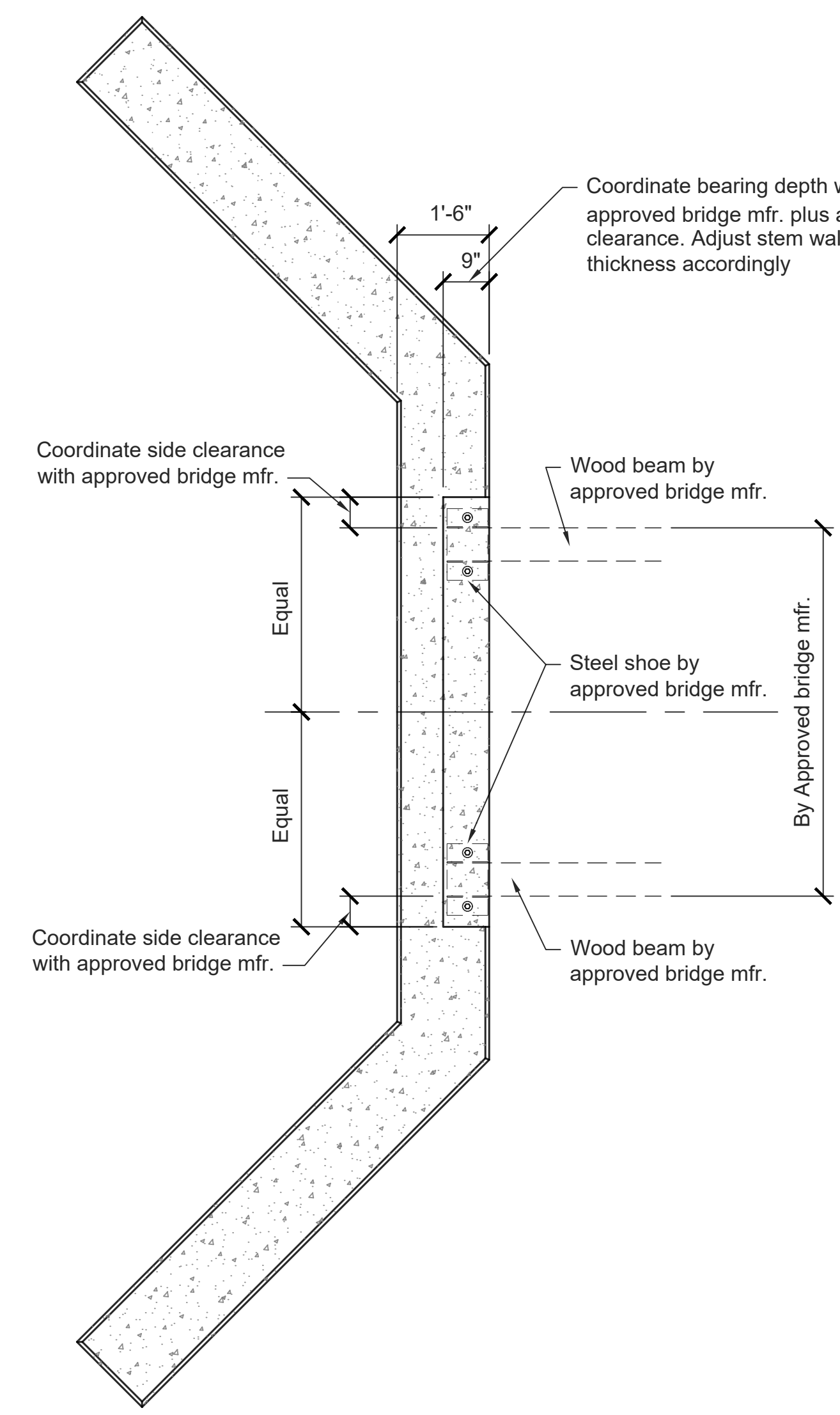
TOWN OF STONY CREEK, NY  
52 HADLEY ROAD, STONY CREEK, NY  
NEW YORK  
WARREN COUNTY  
STONY CREEK

NEW PEDESTRIAN BRIDGE  
ELEVATION AND DETAILS

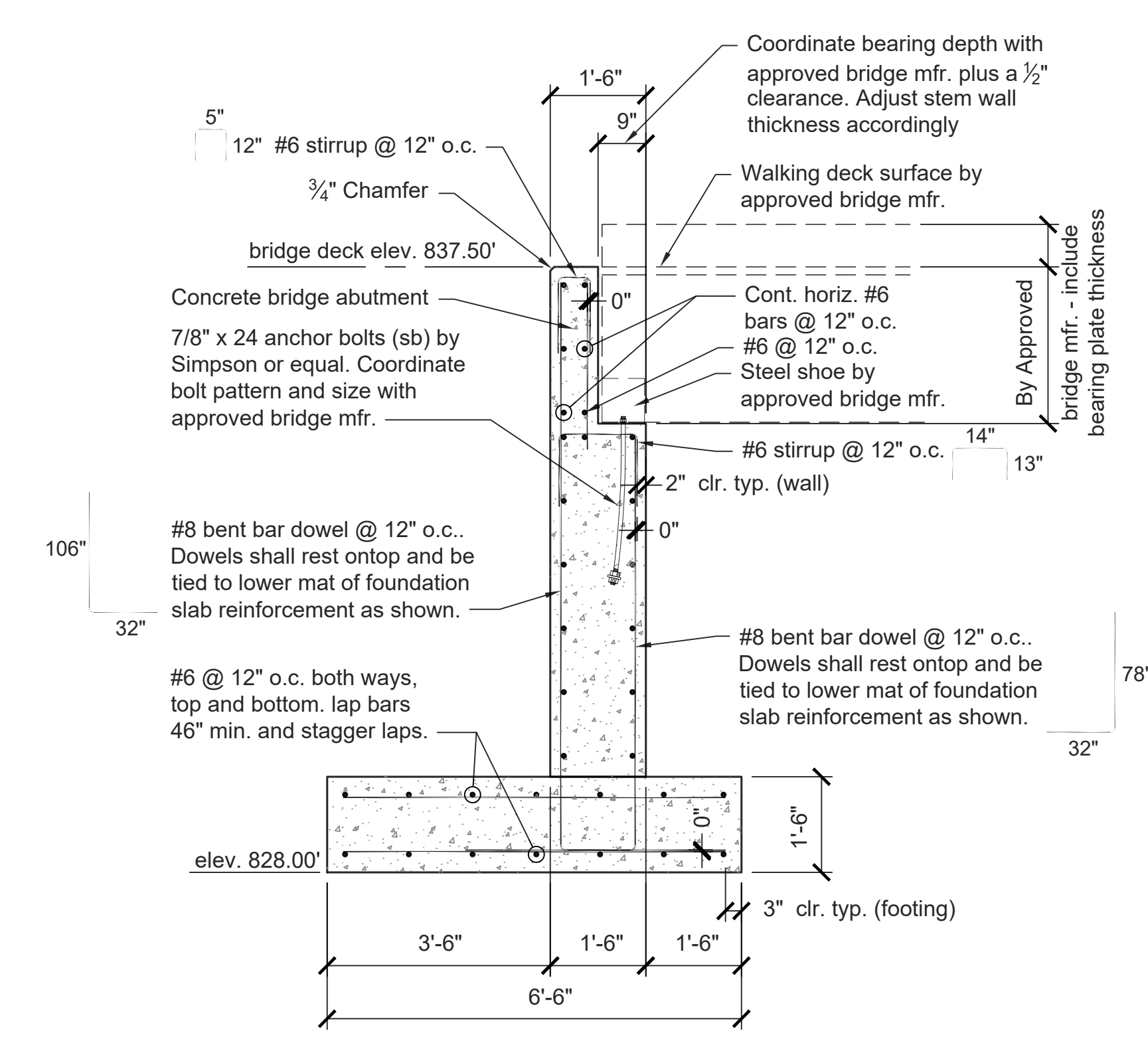


**FOOTING PLAN**  
SCALE: 1/2" = 1'-0"  
1  
G-3

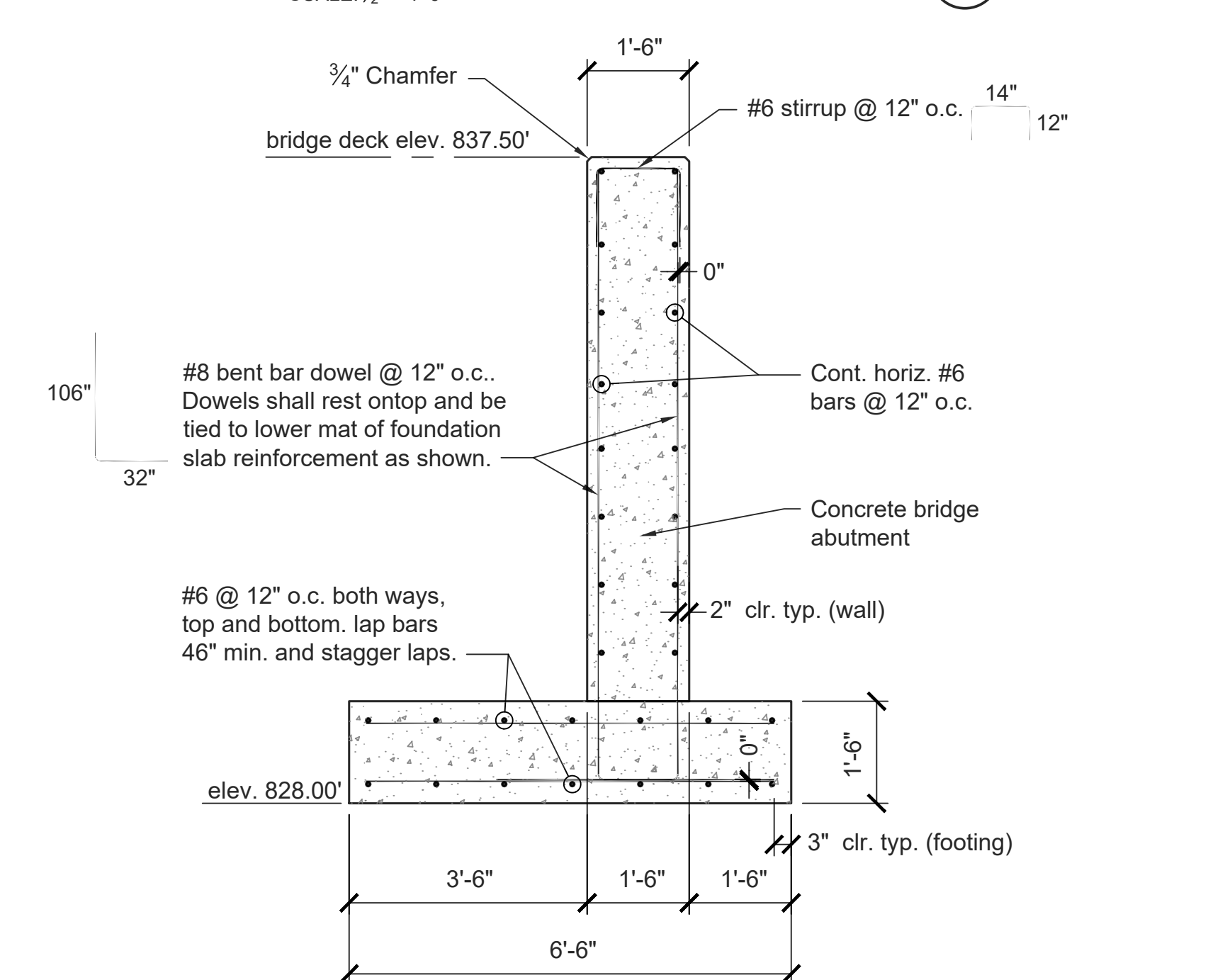
**FOUNDATION WALL PLAN**  
SCALE: 1/2" = 1'-0"  
2  
G-3



**FOUNDATION WALL TOP VIEW**  
SCALE: 1/2" = 1'-0"  
3  
G-3



**FOUNDATION WALL SECTION**  
SCALE: 1/2" = 1'-0"  
4  
G-3



**FOUNDATION WALL SECTION**  
SCALE: 1/2" = 1'-0"  
5  
G-3

- GENERAL NOTES:**
- FORM WORK SHALL NOT BE REMOVED UNTIL CONCRETE HAS REACH 80% OF ITS SPECIFIED STRENGTH (10 DAYS MINIMUM).
  - ALLOW CONCRETE FOOTING TO CURE A MINIMUM OF 7 DAYS PRIOR TO POURING WALL ABOVE.
  - AGGREGATE FILL COMPACTION SHALL MEET THE 95% OF STANDARD PROCTOR.

- CONCRETE MIX DESIGN:**
- ABUTMENT FOOTINGS AND FOUNDATION WALLS SHALL HAVE A MINIMUM COMPRESSIVE STRENGTH OF 4500psi IN 28 DAYS. AGGREGATE SIZE OF 3/4" NOMINAL MAXIMUM AGGREGATE SIZE. AIR CONTENT: 6.5% ± 1.5%.
  - SLUMP LIMIT: 4 INCHES, PLUS/MINUS 1 INCH.

- REINFORCEMENT NOTES:**
- BAR REINFORCEMENT SHALL BE ASTM A615, GRADE 60. INSTALL REINFORCEMENT WITH COVERAGE AS SHOWN.
  - MESH REINFORCEMENT SHALL BE ASTM A185 AND A82.
  - ALL SPLICES IN BAR REINFORCEMENT SHALL BE 30" MINIMUM WITH NO MORE THAN 50% OF REINFORCEMENT TO BE SPLICED AT SAME LOCATION, SPLICES SHALL BE STAGGERED.

- STRUCTURAL DESIGN LOAD CRITERIA:**
- WIND LOAD:  
BASIC WIND SPEED (3 SECOND GUST) = 115mph
- SNOW LOAD:  
GROUND SNOW LOAD = 60psf
- SEISMIC LOAD:  
WIND FORCE GREATER THAN SEISMIC

**DEAD LOAD TABLE:**  
Wood Glulam Bridge = 12,000lbs

**LIVE LOAD TABLE:**  
90lbs per square feet

NOT FOR CONSTRUCTION

PROJECT INFORMATION:	DATE:	4/26/20	DESIGNED BY:	GF	REVIEWED BY:	TS
	SCALE:	1/16" = 1'-0"	DRAWN BY:	JLC	PROJECT NO.:	18-018
NO.:	DATE:					
REVISIONS:	DESCRIPTION:					

TOWN OF STONY CREEK, NY  
52 HADLEY ROAD, STONY CREEK, NY  
NEW YORK  
WARREN COUNTY  
STONY CREEK

NEW PEDESTRIAN BRIDGE  
ABUTMENT DETAILS