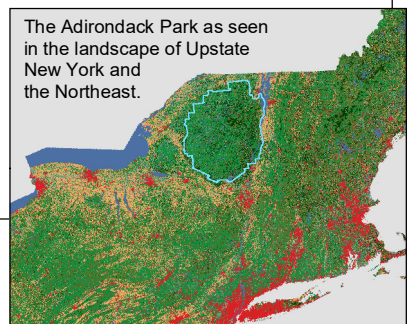


# Adirondack Park

## 2019 Land Cover



### Park Land Cover Classes (percent of land cover in the park)

11 Open Water (5.58%)	43 Mixed Forest (11.88%)
21 Developed, Open Space (1.6%)	52 Shrub/Scrub (1.09%)
22 Developed, Low Intensity (0.52%)	71 Grassland/Herbaceous (0.63%)
23 Developed, Medium Intensity (0.22%)	81 Pasture/Hay (1.07%)
24 Developed High Intensity (0.04%)	82 Cultivated Crops (0.15%)
31 Barren Land (Rock/Sand/Clay) (0.11%)	90 Woody Wetlands (8.96%)
41 Deciduous Forest (46.06%)	95 Emergent Herbaceous Wetlands (0.53%)
42 Evergreen Forest (21.55%)	Adirondack Park Boundary

0 5 10 Miles



JWB, May 2022

The National Land Cover Database (NLCD) provides nationwide data on land cover and land cover change at a 30m resolution with a 16-class legend based on a modified Anderson Level II classification system. See [www.mrlc.gov](http://www.mrlc.gov) for more information.