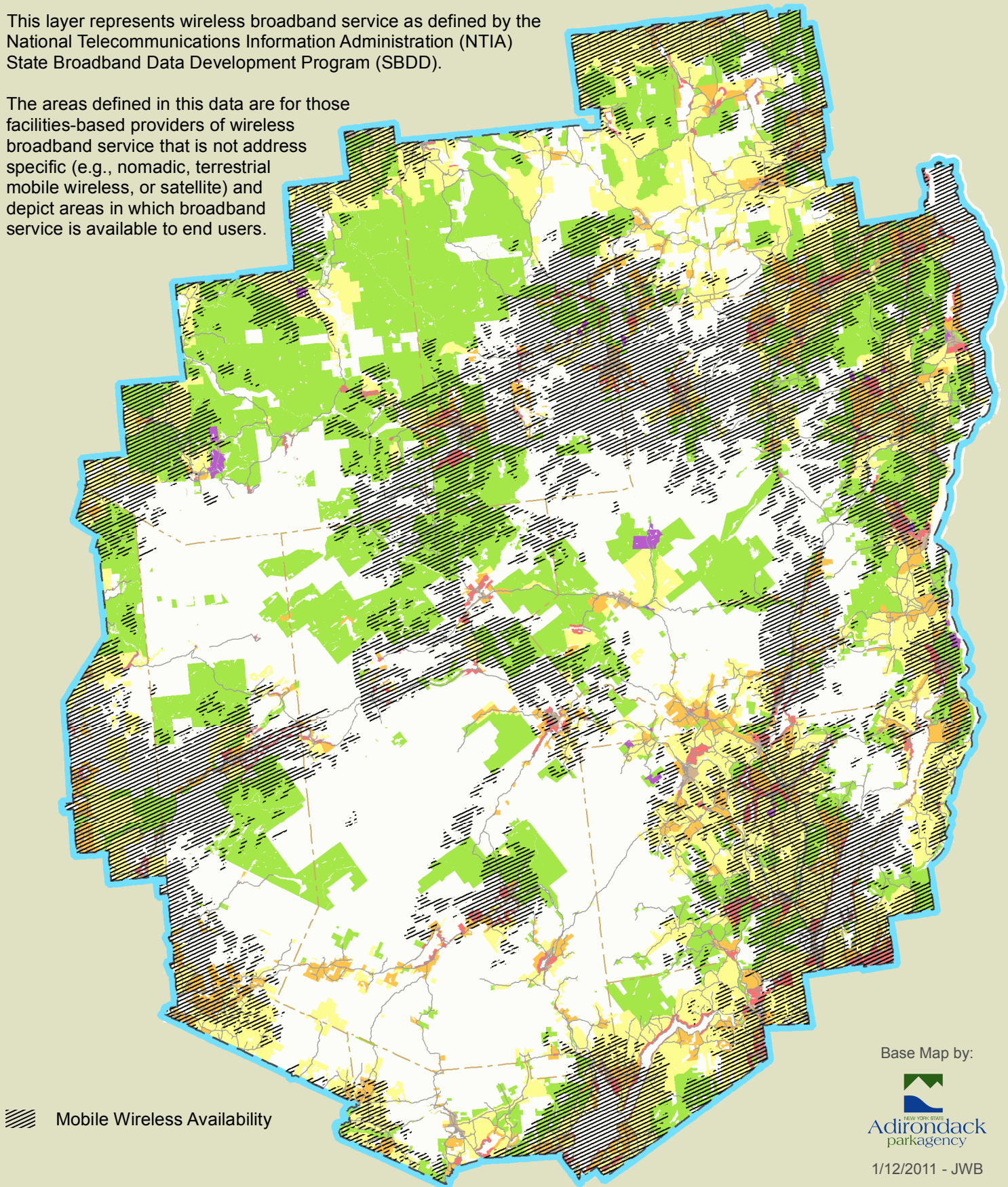


Adirondack Park Broadband Wireless Availability

Source: New York State Broadband Mapping Program, November 2010

This layer represents wireless broadband service as defined by the National Telecommunications Information Administration (NTIA) State Broadband Data Development Program (SBDD).

The areas defined in this data are for those facilities-based providers of wireless broadband service that is not address specific (e.g., nomadic, terrestrial mobile wireless, or satellite) and depict areas in which broadband service is available to end users.



Base Map by:



1/12/2011 - JWB