

## **2021 Park Policy and Planning Report**

### **Map Amendments**

The Agency reviewed a request for an amendment to the Adirondack Park Land Use and Development Plan (APLUDP) map by the Town of Lake Luzerne, Warren County. This map amendment request would have reclassified approximately 105 acres of Rural Use to Moderate Intensity Use. The Agency received considerable public comment regarding the potential loss of open space, the impact on rural character, and impacts to wildlife. The Agency determined that the proposed reclassification was not justified, and the map amendment was not approved.

The Agency also began review of map amendments requested by two towns in the Park. MA2021-01 was a request by the Town of Warrensburg, Warren County for two amendments to expand its Hamlet area. The Agency accepted a Draft Supplemental Environmental Impact Statement (DSEIS) on the proposed amendments at the December meeting. The Agency also restarted its review of a proposed map amendment (MA2020-02) requested by the Town of Webb, Hamilton County. Webb originally applied for the amendment in 2020 but paused the process early in the pandemic.

Through interdisciplinary staff work, the Agency also revised the map amendment application to be consistent with new SEQR regulations. The new application better reflects the Agency map amendment criteria. The application is also now a fillable form available on the Agency's website.

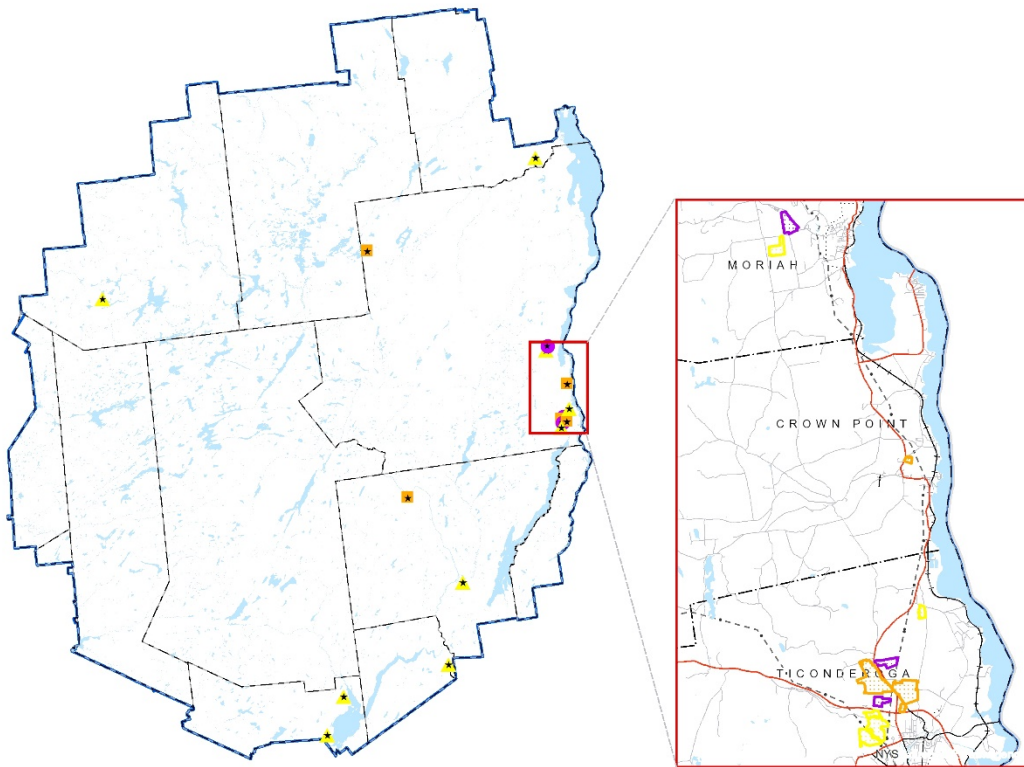
## **Geographic Information Analysis**

### **Mapping**

Planning staff routinely advises and assists Regulatory Programs, Legal, State Lands, and Local Government Services staff as well as local governments and the public with land use boundary mapping, and GIS-related questions.

During 2021 planning staff prepared a geographic inventory of all commercial solar projects that are in the pre-application stage, are under review, or have been approved by the Agency. Public presentations on this information were made at the May and

October Board meetings.



*Figure 1: October 2021 inventory of commercial solar projects in the Adirondack Park.*

GIS staff produced a new 2021 digital edition of the Adirondack Park Land Use and Development Plan Map and State Land Map, which was made available at the Agency's website for public download. Staff also acquired 2020 census data that was processed and analyzed for inter-agency and intra-agency purposes. Staff created web maps and GIS dashboards to present census data information.

### **Lookup System**

Agency GIS staff maintained the Agency's Lookup System, made data improvements and extended functionality throughout the year. In December 2021, GIS staff released the new Lookup System 4.0 and EditAPA 2.0 applications to replace the previous Lookup System 3.0. Over the course of 2021, staff troubleshooted these new web applications and repaired issues that required resolution.

## Major Data Improvements

The Agency uses high quality GIS data both produced internally and received from external sources. Major GIS data updates this year included the 2019 and 2020 tax parcel datasets, DEC lands and acquisition datasets, and 2020 census data updates. Annual updates were made to the Agency's telecommunication towers dataset as well as the maps hosted on the website. Staff also updated APA Land Classifications information and generated new statistics for the Agency's 2021 dataset.

## Website Development

In 2021, the Agency used its website as the primary source of information to the public. All monthly Agency meeting materials are now posted to the website, eliminating the past practice of mailing paper copies. Additionally, Agency meeting presentations are now available for public viewing on the website 24 hours prior to the meeting being hosted.

As part of the Agency's continued efforts to improve its website, an interdisciplinary team made several changes to the website's organization and content. Staff updated the Public Input page to better receive digital public comments and reorganized several website pages to streamline data access for the public. Behind the scenes, the Agency's website hosting vendor moved the website to a new remote server, which was successful with significant assistance by NYS Information Technology (ITS) staff. While this change is not noticeable to users, it required several changes to the website's code.

### 2021 GIS/Web Tasks Summary:

Task	Year to Date
GIS Agency Program Administration	37
GIS Map Production	45
LUA Boundary/Blue Line Inquiry	54
Map Amendments Review	5
State Land Classification/Reclassification Review	1
Web Administration/Content Management	82
Administrative Tasks	15