



Adirondack
Park Agency

2024-25 APSLMP Amendments Proposed Final Package

CONTINUED DISCUSSION
STATE LAND COMMITTEE

August 14, 2025

Timeline & Process

- May 2024 – initiation memo from APA to DEC with draft redline
- June 2024 – APA receives feedback from DEC
- June/July 2024 – 5+ work sessions to discuss DEC feedback
- Sept 2024 – APA board presentation, SEQRA authorization
- Oct 2024 – APA issues neg dec, starts 60-day comment period, hearings
- Dec 2024 – comment period closes
- Jan-April 2025 – APA reviews comments, drafts responsiveness doc, makes changes to draft redline
- April 30, 2025 – APA sends memo to DEC with proposed final redline
- June 13, 2025 – APA board presentation, summary of public comments and proposed final package
- Summer 2025 – Continued public discussion

Objective

- Respond to questions from board members
- Engage in further public discussion on the package
- No action slated for today



Alpine azalea on Skylight, June 2025

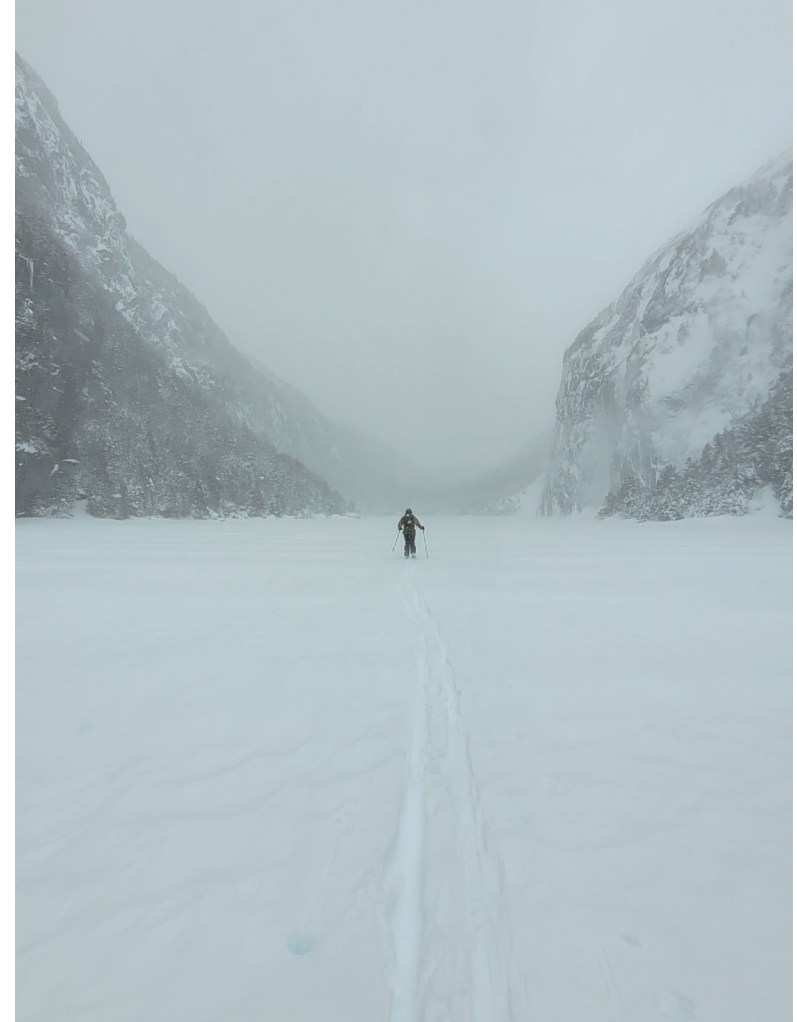
Questions & Topics from the Board

- Are there barriers to ski touring on the Forest Preserve?
- Scenic vista maintenance
- How does classification of the Four Peaks tract happen within the APSLMP amendments process?
- What is the process and cadence for UMP review?

Ski Trails

Goals:

- Go over public comments
- Establish shared vocabulary
- Go over types of ski touring
- Review some work-to-date



Skiing over Avalanche Lake, High Peaks Wilderness

Ski Trails

- Public comments asked for the APSLMP cross-country ski trail definition to be amended, stating:
 - The current definition is a hurdle for the development of low-impact and safe ski touring trails.
 - The link to foot trail dimensions unnecessarily limits the ability to create and manage low impact ski trails on the forest preserve.
- Individuals also asked that terms such as “ski touring”, “backcountry ski trails”, “skin track” and “glade areas” be included in the Master Plan.

Ski Trails

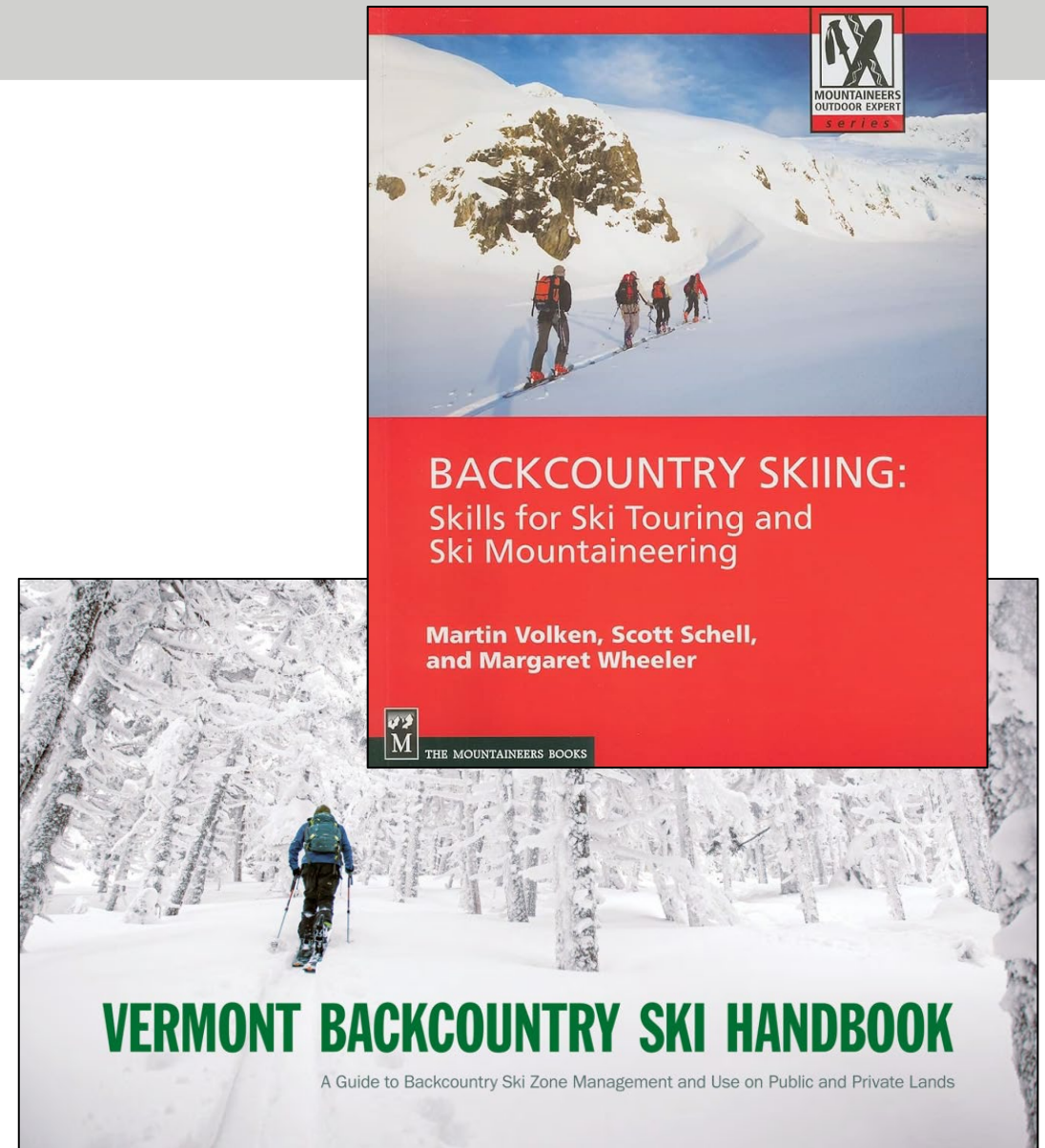
Definitions

- Backcountry skiing
 - “skiing outside a controlled ski area”
- Ski touring
 - “skiing without the aid of lifts outside a controlled ski areas”

Master Plan, p. 29:

“1. The following types of recreational use are compatible with wilderness and should be encouraged as long as the degree and intensity of such use does not endanger the wilderness resource itself:

-- ... ski touring...”



Types of Ski Touring

Ski Touring
on the Forest Preserve

```
graph TD; A[Types of Ski Touring] --> B[Ski Touring on the Forest Preserve]; A --> C[Ski Touring not on the Forest Preserve]; B --> D[Managed, man-made: Cross country touring]; B --> E[Unmanaged, natural: Dispersed, ephemeral]; C --> F[Managed backcountry ski zones];
```

Managed, man-made:
Cross country touring

Unmanaged, natural:
Dispersed, ephemeral

Ski Touring *not* on the Forest Preserve

Managed backcountry
ski zones

Types of Ski Touring on the Forest Preserve

Ski Touring on the Forest Preserve

Managed, man-made:
Cross country touring

Unmanaged, natural:
Dispersed, ephemeral



Cross country ski touring in the Johns Brook Valley

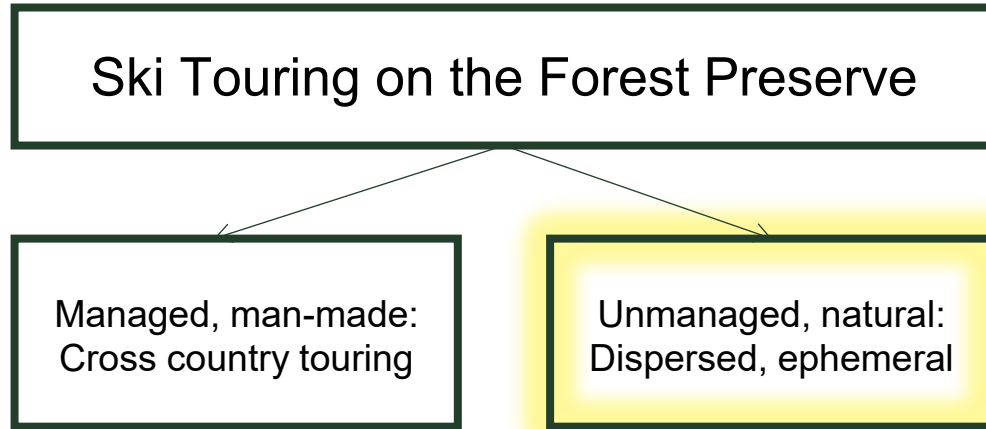
Cross country touring:

- On-trail, managed, human made
- Constructed, maintained and managed by the State, includes vegetative cutting
- Range of locations and experiences
- Variety lends itself suitable for skiers with wide range of skills and interest.

Examples on the Forest Preserve:

- Jackrabbit Trail – spans multiple units
- Avalanche Lake ski trail – High Peaks Wilderness

Types of Ski Touring on the Forest Preserve



Dispersed, ephemeral ski touring in the Johns Brook Valley

Dispersed, ephemeral:

- Off-trail, unmanaged, naturally occurring
- Locations temporarily improved for skiing
- Conditions change over time as forest regenerates
- Not managed by the State
- No vegetation management

Examples on the Forest Preserve:

- Slides
- Naturally occurring glades (open woods)

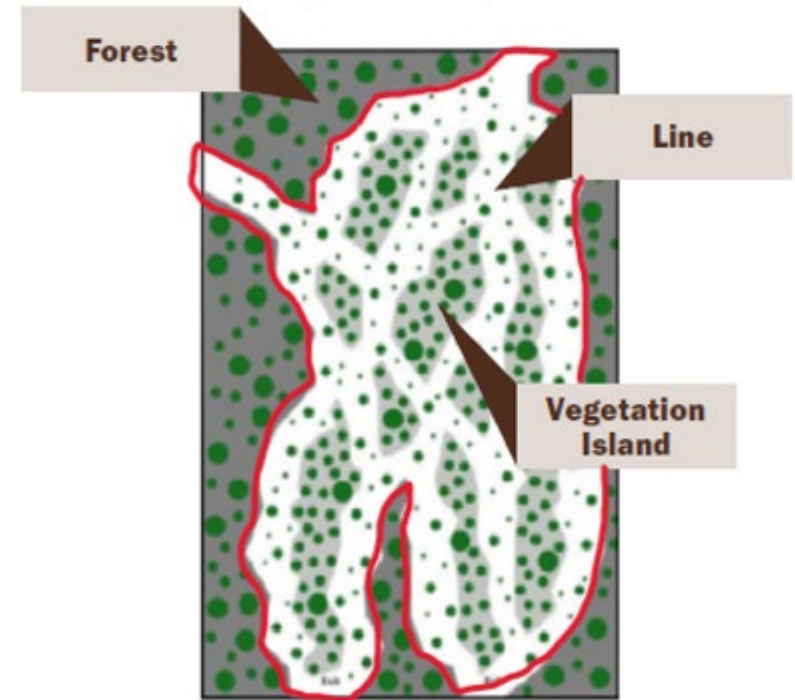
Ski Touring not on the Forest Preserve

Managed backcountry ski zones:

- Also known as: open woods, tree or glade skiing
- Intentionally planned & designated areas
- Vegetation management to open lines for skiing
- Maintain vegetative islands for forest functionality
- Carefully considered site selection

Managed backcountry
ski zones

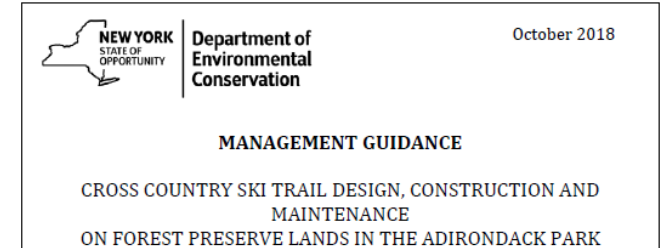
Figure 2. Depiction of a backcountry ski zone from above. It contains skiable lines and vegetation islands and is surrounded by a matrix forest. USFS



From USFS and the Vermont Backcountry Ski Handbook

Ski Trails - Work to Date

- 2008 – 2015: Planning efforts for backcountry ski opportunities begin; Backcountry Skiing Working Group informs development of draft backcountry ski trail guidance.
- December 2015: Public comment period for developing ski trails in the Adirondack Forest Preserve.
- 2016: Approved Wilmington Wild Forest UMP amendment
- 2018: Approved High Peaks Wilderness UMP amendment
- Dec. 2018 – Jan. 2019: Comments accepted from public on 2018 Ski Trail Draft Guidance.



-DRAFT- October 10, 2018

Ski Trails - Work to Date

- April 2019: Saranac Lakes Wild Forest UMP approved
- 2021: Court of Appeals decision regarding Class II Community Connector Trails.
- 2021: Trail Stewardship Working Group (TSWG) established.
- 2023: DEC Commissioner Policy 78 (Forest Preserve Work Plan Policy) is approved, development informed by TSWG.
- 2023 - Present: APA and DEC drafting Interagency Guidance for Trail Networks in the Forest Preserve, includes design parameters for foot, bicycle, equestrian, cross country ski, and snowmobile trails.

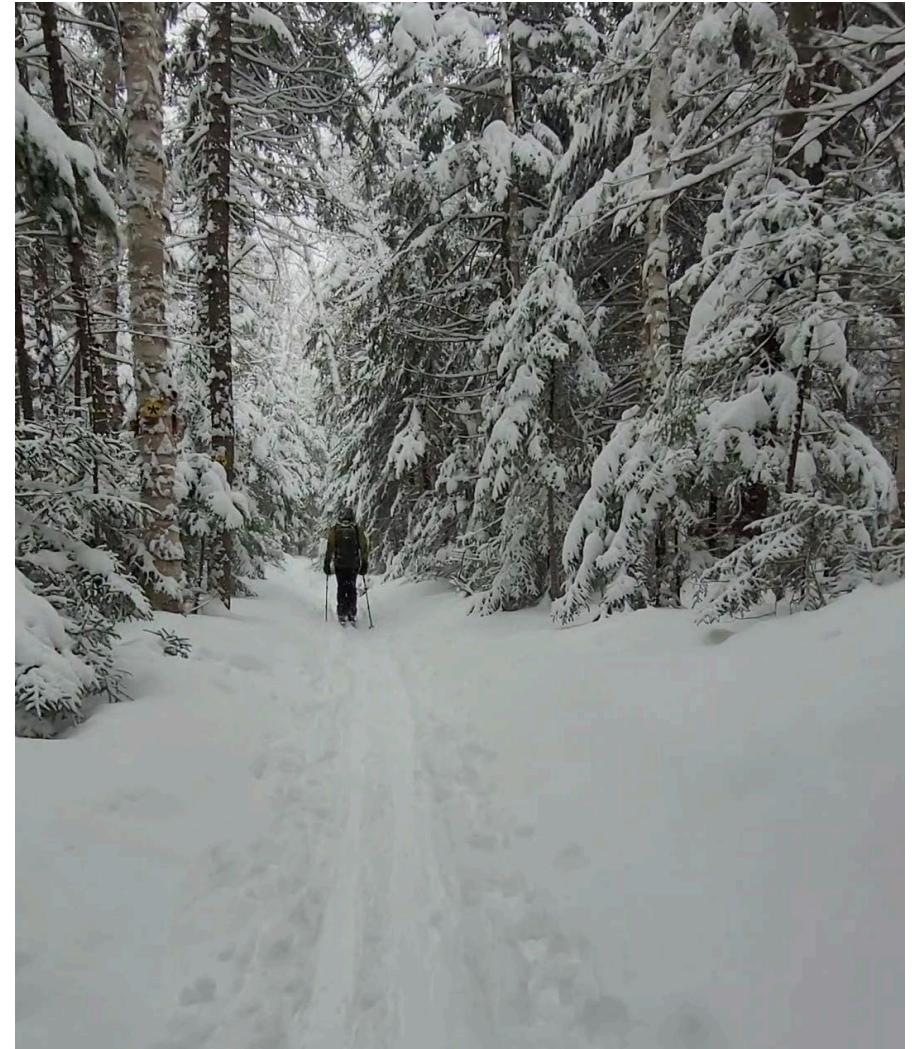
Next Steps

1. Complete draft Interagency Guidance for Trail Networks in the Forest Preserve
2. Update and complete Cross Country Ski Trail Design, Construction and Maintenance draft management guidance

Ski Trails

In sum:

- Ski touring is a conforming activity per the Master Plan.
- Cross country ski touring trails are in approved UMPs and managed today.
- Naturally occurring off-trail ski touring opportunities exist and are not managed.
- Managed backcountry ski zones are not managed on the Forest Preserve.
- APA and DEC are developing guidance for trails across the Forest Preserve, including cross-country ski trails.



Cross country ski touring in the High Peaks Wilderness

Scenic Vista Maintenance

COMMENT: Commenter recognized that scenic vistas are another way for people to enjoy the Adirondack Park and asks that the state maintain, and in some instances, improve them for continued enjoyment.

RESPONSE: The Master Plan recognizes the importance of scenic vistas, stating, “scenic vistas from ... travel corridors are relatively rare and their protection and enhancement are important.” Master Plan at p. 51. DEC and the Department of Transportation are responsible for the management of scenic vistas in the Adirondack Park.

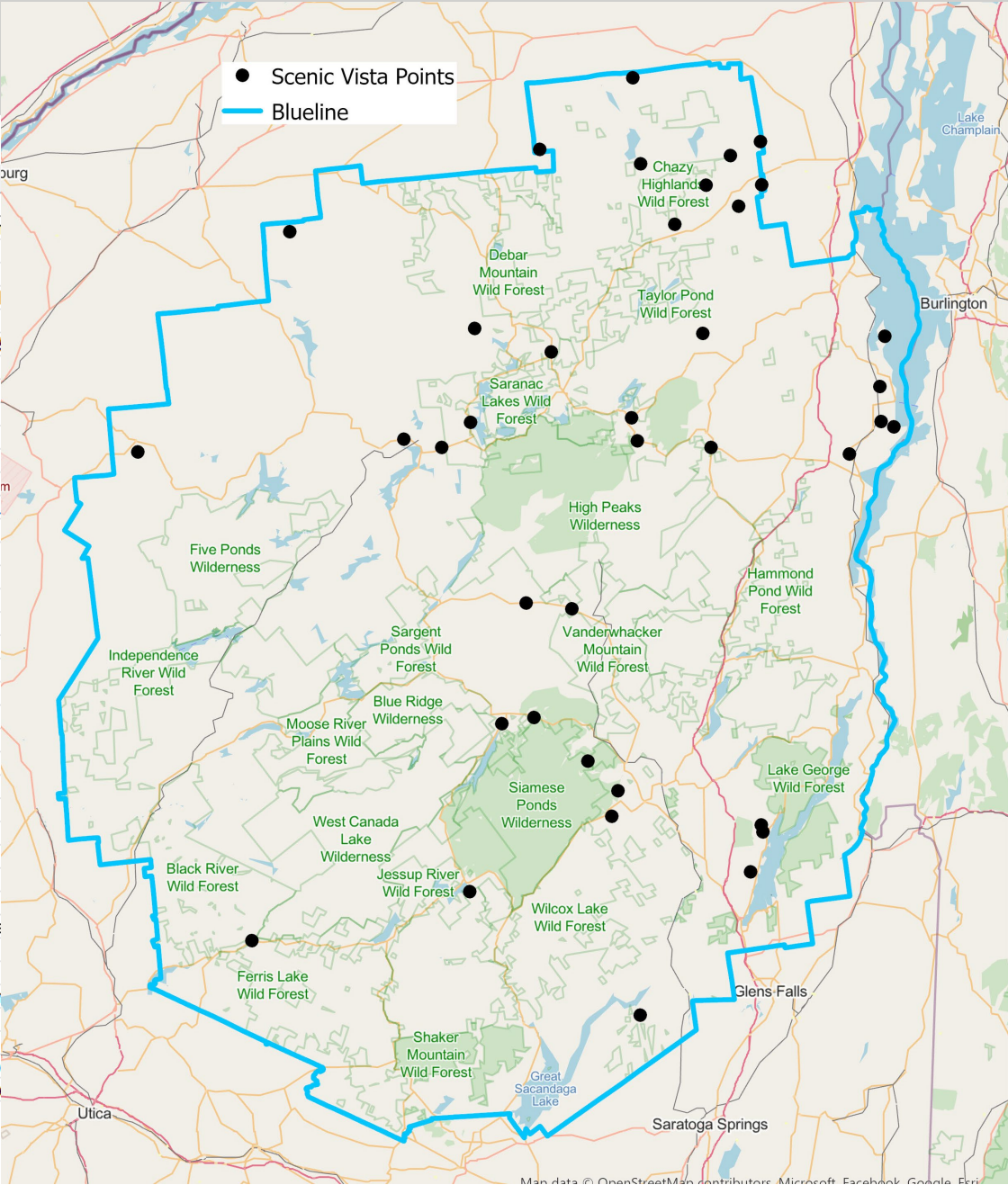
Scenic Vistas



View from the scenic vista at Route 9N & Route 73 in Keene
Photo by John DiGiacomo, courtesy of the Adirondack Land Trust

Scenic Vistas

A	B	C	D	E	F
OBJECTID	VISTA24K	Town	Location		
1	9	Ellenburg	Approximately 6.5 miles north of Upper Chateaugay Lake and approximately 1/4 r		
2	1	Bellmont	1 mile west of Owl's Head		
3	6	Dannemora	1 mile northeast of hamlet of Standish on road from Standish to Lyon Mountain		
4	29	Saranac	At intersection of Chazy Lake Road and Chateaugay Branch of the Delaware and		
5	7	Dannemora	0.5 miles west of Village of Dannemora on State Route 374		
6	8	Dannemora	2.75 miles northeast of Village of Dannemora on French Settlement Road and 0.2		
7	30	Saranac	3.25 miles east of Picketts Corners near Hardscrabble Road		
8	31	Saranac	2 miles southeast of hamlet of Saranac on Burnt Hill Road		
9	14	Hopkinton	Whites Hill		
10	32	Saranac	Two miles northwest of Clayburg on Clayburg to Standish Road		
11	27	Santa Clara	Two miles west of Keese Mill on Keese Mills Road		
12	13	Harrietstown	Approximately at intersection of State Routes 86 and 192-A		
13	38	Wilmington	On Bonnie View Rd near intersection with New Bridge Brook (Non listed in SLMP.		
14	36	Willsboro	4.5 miles northeast of Willsboro on County Route 27 on Willsboro Point		
15	28	Santa Clara	On State Route 30 at Pelky Bay on Upper Saranac Lake		
16	24	North Elba	0.5 miles east of Village of Lake Placid on State Route 86		
17	37	Willsboro	1.5 miles south of Willsboro on County Route 22-M (aka Co Rt 66, Middle Rd)		
18	10	Essex	1.5 miles northeast of Whallonsburg on Christian Road		
19	11	Essex	0.75 miles southwest of Whallon Bay (Lake Champlain) on Lake Shore Road		
20	12	Fine	Approximately 1.25 miles south of hamlet of Fine		
21	33	Tupper Lake	Approximately 1.5 miles west of the Railroad Station on State Route 3		
22	34	Tupper Lake	At intersection of road east of Sunmount Developmental Center and State Routes		
23	25	North Elba	Near intersection of State Route 73 and Heart Lake Road in North Elba		
24	20	Keene	Intersection of Route 73 and 9N		
25	35	Westport	4.0 miles north of Westport		
26	22	Newcomb	On State Route 28N approximately 0.75 miles south of Campsite Road		
27	15	Indian Lake	On State Route 30 overlooking Lake Abanakee		
28	16	Indian Lake	2.5 miles east of Lake Abanakee overlooking Lake Snow		
29	17	Johnsburg	3 miles south of hamlet of North Creek		
30	18	Johnsburg	Approximately 0.5 miles southeast of Bakers Mills		
31	2	Bolton	On Federal Hill Road (Not in same location as early facsimile maps. This point ma		
32	3	Bolton	On Federal Hill Road (Not in same location as early facsimile maps.)		
33	4	Bolton	On Coolidge Hill Road		
34	26	Ohio	Intersection of West Canada Creek Road and State Route 8 at hamlet of Noblebor		
35	21	Lake Pleasant	On southeast shore of Lake Pleasant		
36	19	Johnsburg	3 miles south of North River on Barton Mine Road		
37	5	Corinth	Approximately 0.5 miles east of Daly Creek Road and 0.1 miles north of West Mo		
38	23	Newcomb	3 miles east of hamlet of Newcomb on State Route 28N (Not on pre-1987 facsimil		



Four Peaks Tract Classification

Amendment actions described in the PEIS include:

- Classification of recent acquisitions
- Reclassification of existing state land
- Creation of a new state land classification
- Deletion of an existing classification
- Alteration of guidelines for management and use
- Alteration of definitions of existing classifications
- Alteration of introductory guidelines
- Alteration of facility definitions
- Alteration of area descriptions

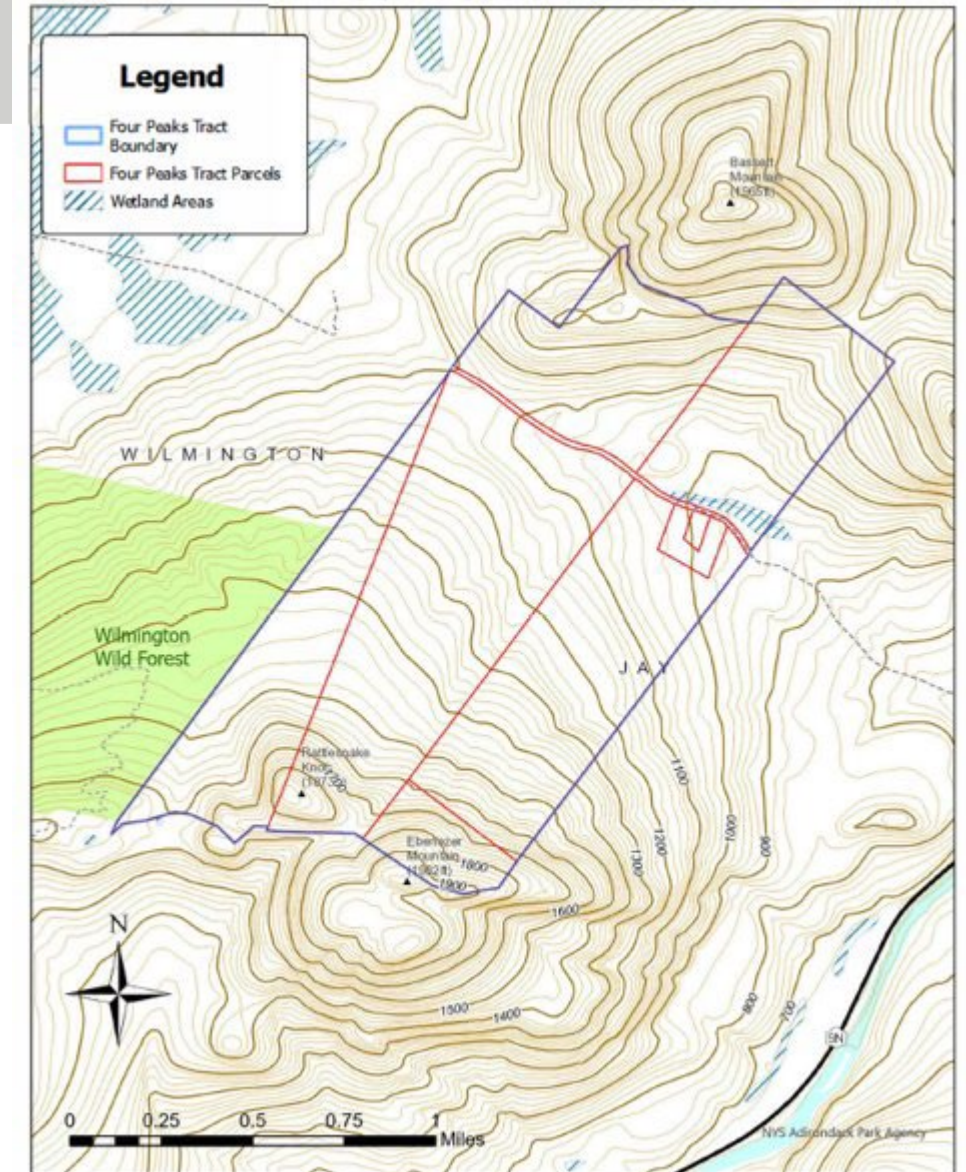


Sunset from a vantage point in the Four Peaks tract

Four Peaks Tract Classification

The action is a periodic review of the Adirondack Park State Land Master Plan and the preparation and submission to the Governor of proposed amendments to the APSLMP for the management of State lands, pursuant to the Adirondack Park Agency Act and the APSLMP. The proposed amendments include:

- 1) classification of recent acquisitions;
- 2) alteration of guidelines for management and use;
- 3) alteration of existing classification definitions;
- 4) alteration of introductory guidelines;
- 5) alteration and addition of definitions; and
- 6) alteration of area descriptions.



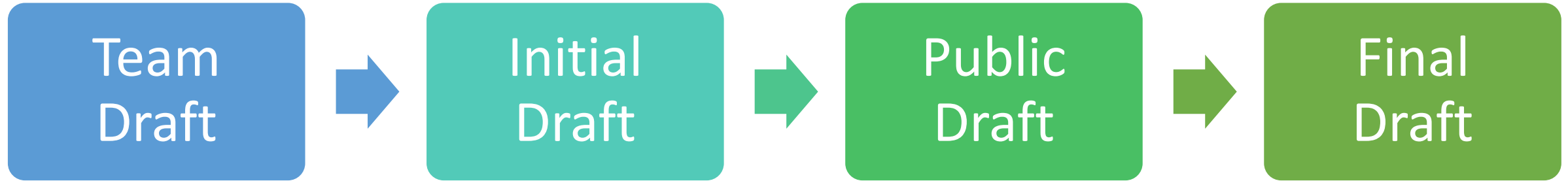
Four Peaks Tract Classification

- Parcels surrounded by or adjacent to previously classified state land will be classified the same
- Small acquisitions adjacent to existing state land will generally be classified the same
- Small acquisitions surrounded by private land should generally be classified Wild Forest



Four Peaks Tract site visit, July 2024

UMP Development Process



Site visit to Broadalbin Boat Launch during the team draft phase, Nov 2022.

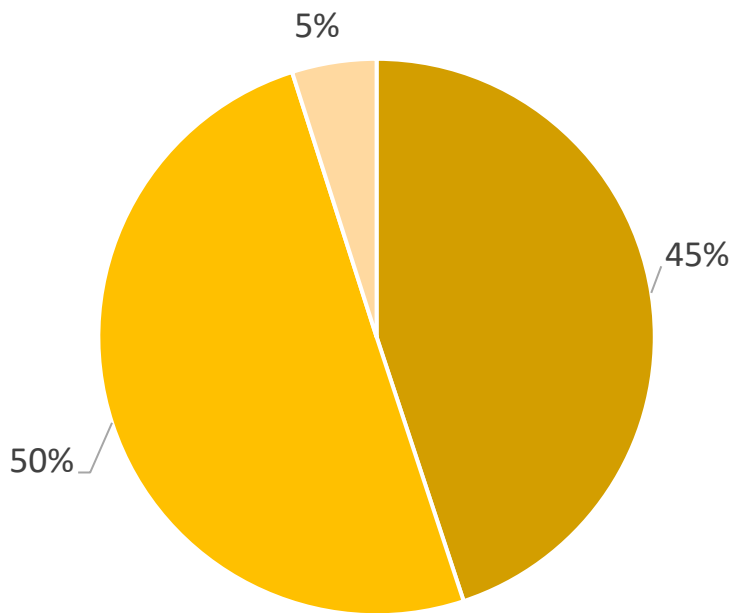


Site visit to Golden Beach Campground with APA and DEC staff during the team draft phase, May 2022.

UMP Development Process

- Wild Forest
 - 74% have approved UMPs
- Wilderness
 - 70% have approved UMPs

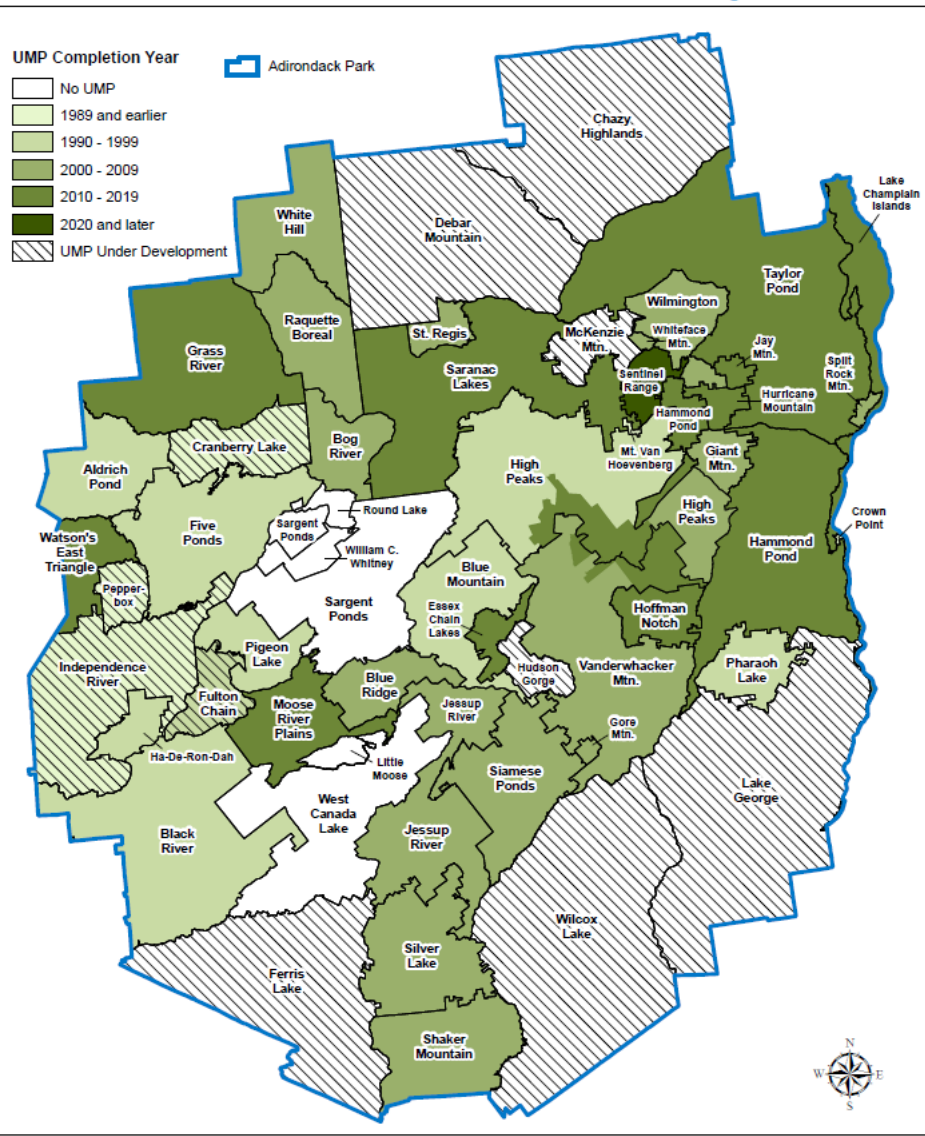
State Land Acreage



■ Wilderness ■ Wild Forest ■ All Other Classifications

Adirondack Park

Unit Management Plan Status



Department of Environmental Conservation

0 5 10 20 30 40 Miles

Updated 5-2023



Questions & Discussion

Paddling on Rainbow Lake, July 2025



**Adirondack
Park Agency**