



Adirondack Rail Trail Association

Julia Goren, Executive Director
9/11/25

Adirondack Park Agency

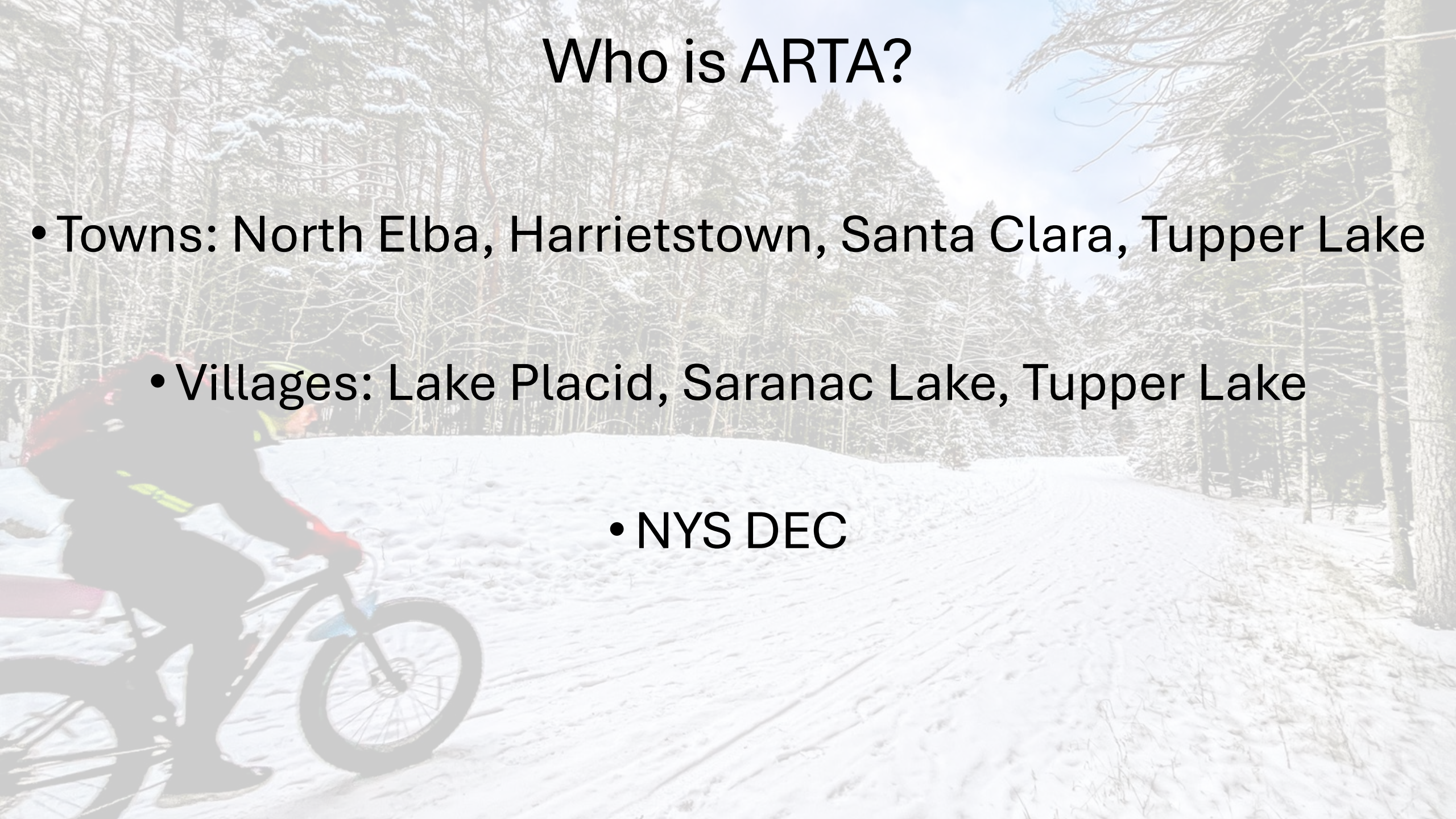




ARTA partners with DEC and the trail towns and villages to support and advise on **promotion, management, maintenance, and operation** of the trail.

Who is ARTA?

- Towns: North Elba, Harrietstown, Santa Clara, Tupper Lake
- Villages: Lake Placid, Saranac Lake, Tupper Lake
- NYS DEC



Who is ARTA?



[EVENTS](#) [GROUP TOURS](#) [FIND A RIDE](#) [RAIL TRAIL](#) [BLOG](#)[SHOP](#) [CONTACT](#)

Who is ARTA?

Rail Trail Brewery Tours

July, August & September

[REGISTER NOW](#)



Working with the DEC



Coordination





Working with the DEC

Working with the DEC



Promotion and public education



[TRAIL MAP](#) ▾

[TRIP PLANNING](#)

[COMMUNITIES](#) ▾

[SPONSORS](#)

[ABOUT](#) ▾

[GET INVOLVED](#) ▾

[SHOP](#)

[DONATE](#)

**WELCOME
TO THE
ADIRONDACK
RAIL TRAIL**



Promotion and public education

THE Adirondack Rail Trail


LOCAL BUSINESS GUIDE
AND TRAIL MAP



About ARTA

The Adirondack Rail Trail Association (ARTA) is a not-for-profit organization started in 2010. We work to make the Adirondack Rail Trail an attractive and safe amenity that will attract visitors, create jobs, and improve the quality of life for local residents. Visit our website, AdirondackRailTrail.org, to learn more about the current trail conditions, local businesses, and attractions. You can also support ARTA by making a tax deductible donation or volunteering to improve the trail!

For more up-to-date information, visit AdirondackRailTrail.org



Local Benefits of the Trail

The Adirondack Rail Trail provides many benefits to the communities that it passes through, including:

- Providing a safe and accessible location for recreation and exercise which encourages healthy lifestyles.
- Drawing new visitors to the area, ultimately increasing demand for local goods and services. Visitors using the rail trail will buy food, clothing, and gear and may stay in local establishments. These activities will support the local businesses along the trail.
- Alleviating some of the pressure on areas of the Adirondacks that are overused, especially in the High Peaks region.

Trail Status and Plans

The Adirondack Railroad connected Utica to Lake Placid and provided passenger service until the mid twentieth century. The final 34 miles from Tupper Lake to Lake Placid is being reborn as one of the nation's premier year-round recreation trails. Connecting amazing tourist destinations and scenic wilderness this multiuse trail provides accessible outdoor recreation for all ages. Currently the trail is open in the winter time for snowmobiling and cross country skiing. Over the next several years the trail surface will be improved for summer use. In the meantime people are welcome to walk and bike on the rough gravel surface as the trail is built.

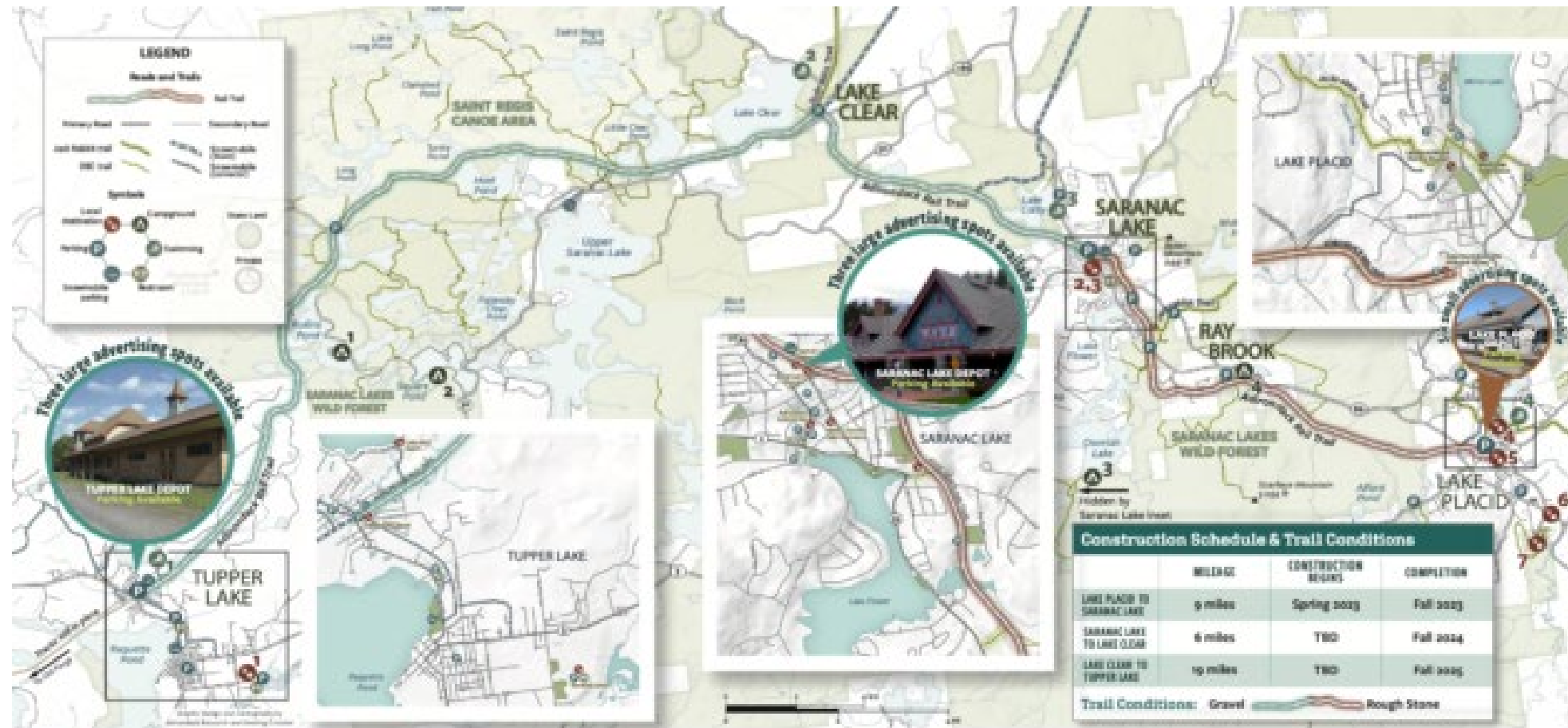
ADVERTISE WITH US

Our next printing of the Rail Trail Map will offer multiple layers of advertising opportunity. Please see the reverse side for more information as well as samples of how these ads and business listings will appear. We expect a distribution of 5,000 maps annually across the tri-lakes region.



VISIT. EXPLORE. CONNECT.

Promotion and public education



Adirondack Rail Trail Association

Julia Goren
09/09/2025



Management and operation

Key Figures

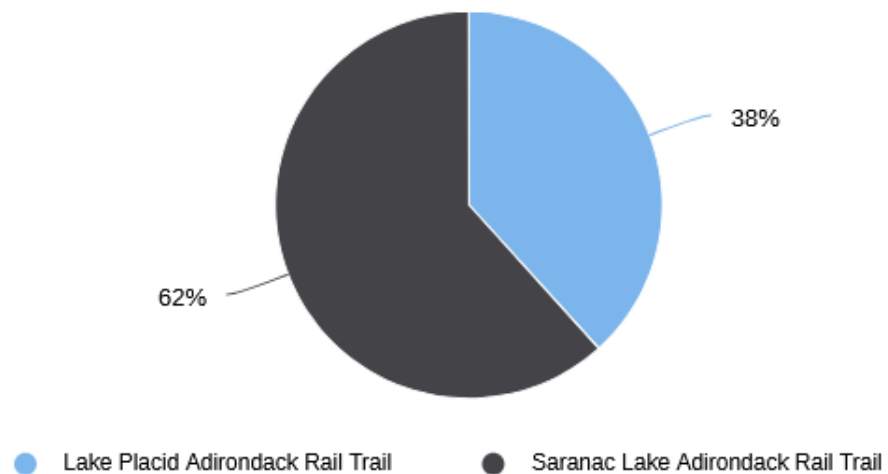
September 9, 2024 → September 8, 2025

Total
158,968

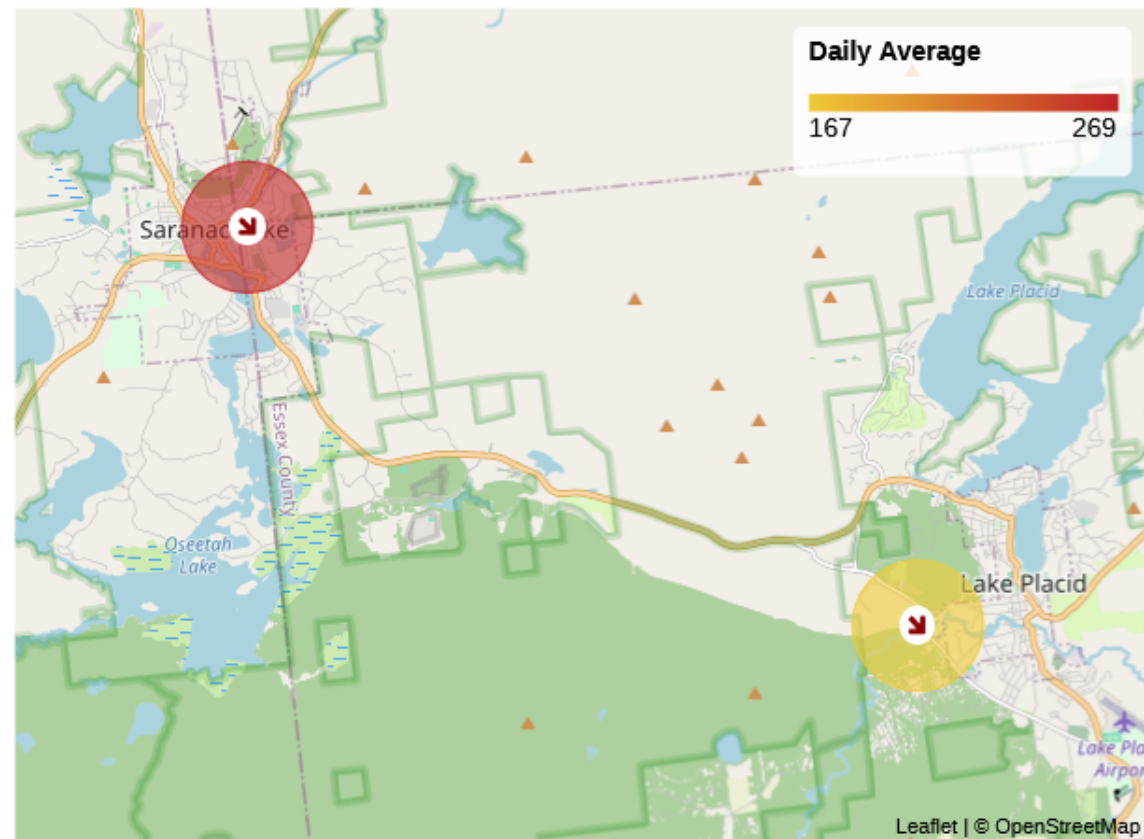
Peak Day
1,652

Sunday
Aug 31, 2025

Distribution



Key Figures Map

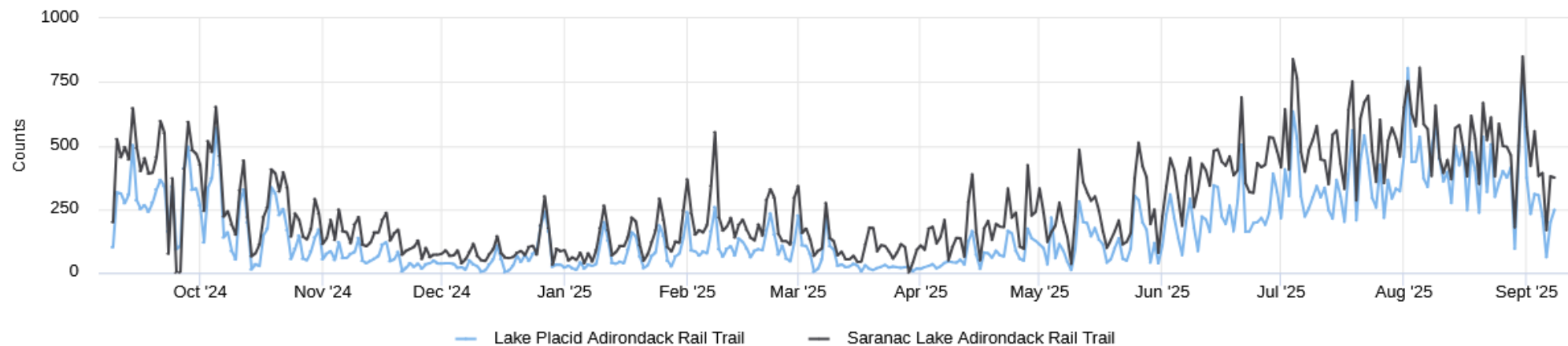


📈 Compared to 09/11/2023 → 09/09/2024

Key Figures

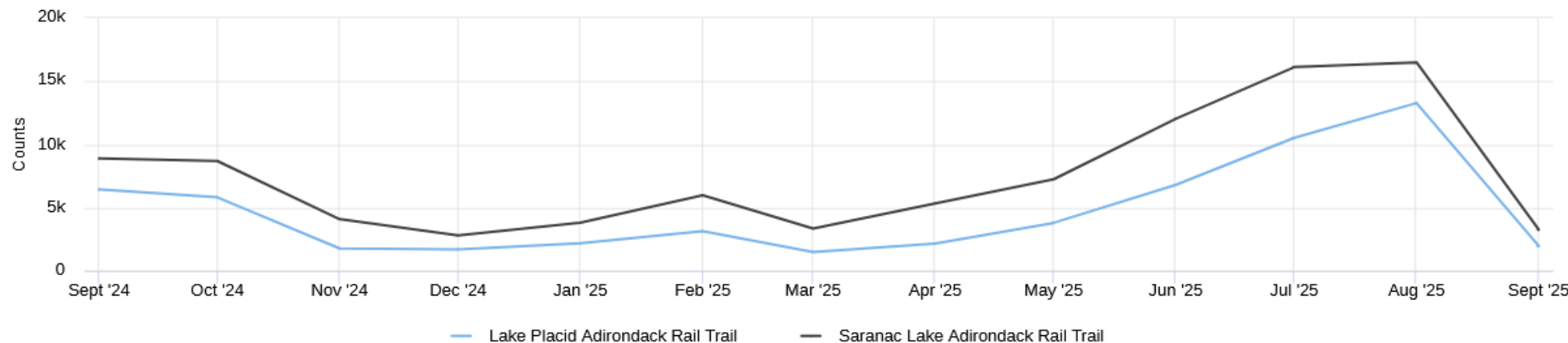
September 9, 2024 → September 8, 2025

Daily traffic



Monthly traffic

date_range 09/09/2024 → 09/08/2025

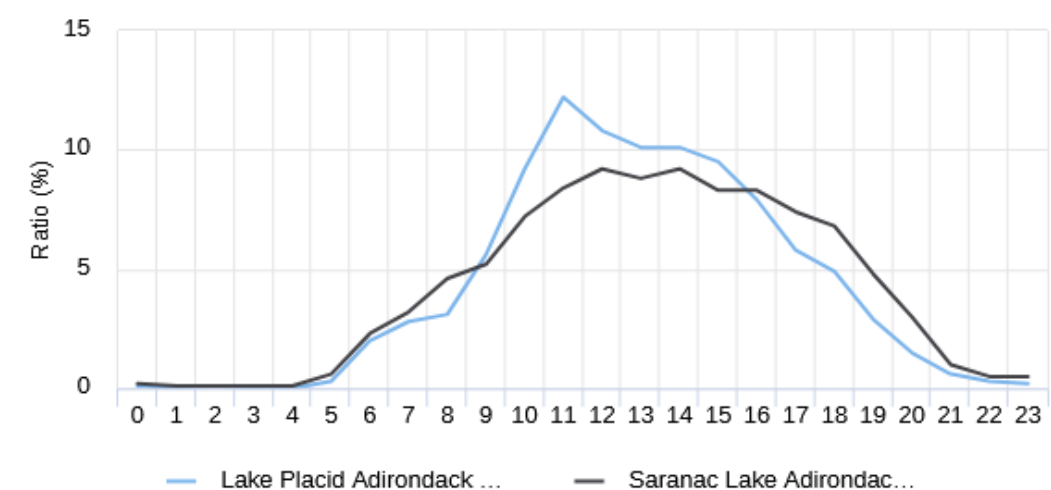


Key Figures

September 9, 2024 → September 8, 2025

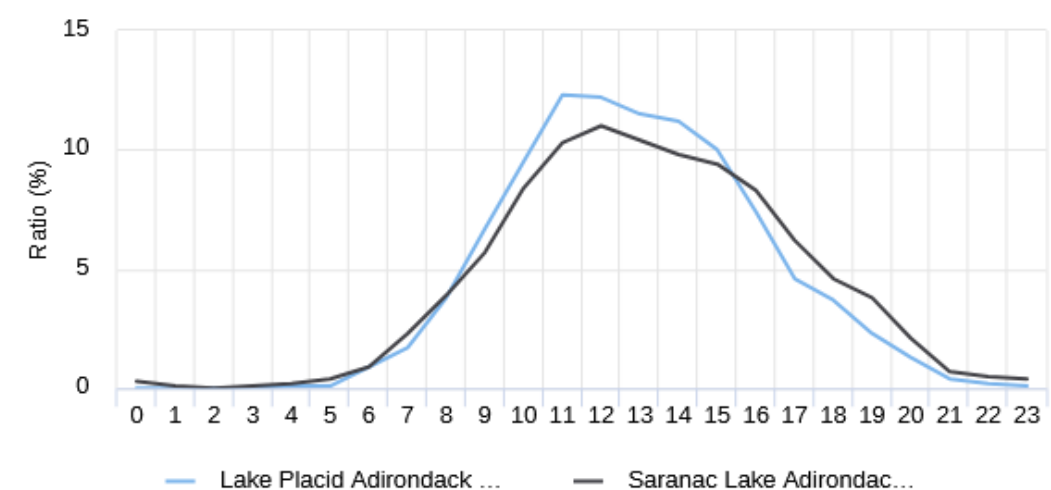
Hourly Profile - Weekdays

date_range 01/01/2025 → 09/08/2025



Hourly Profile - Weekend

date_range 01/01/2025 → 09/08/2025



Economic impact



ARTA long-range vision









Map by Nancy Bernstein

