



ADIRONDACK RAIL TRAIL



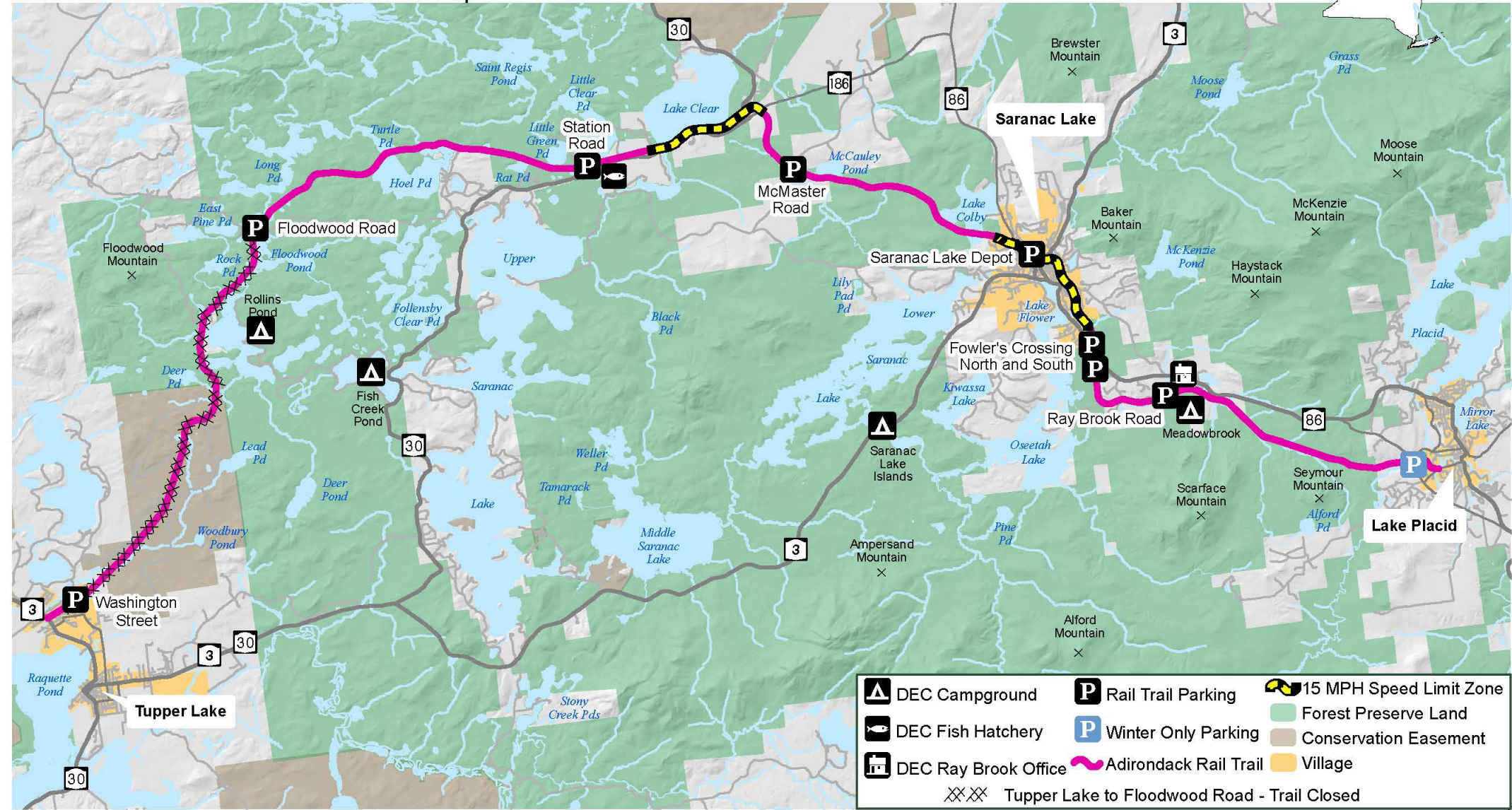
Department of
Environmental
Conservation

Adirondack Rail Trail Progress Update

Remsen-Lake Placid Travel Corridor

9/11/2025

Adirondack Rail Trail - Overview Map



Adirondack Rail Trail - Unit Management Plan



Department of
Environmental
Conservation

Remsen-Lake Placid Travel Corridor

Amendment

to the

1996 Remsen-Lake Placid Travel Corridor Unit Management Plan

Final Supplemental Environmental Impact Statement

River Area Management Plans

for the

Main Branch of the Saranac River, the Main Branch of the Raquette River, Middle Branch of the Moose River, North Branch of the Moose River, South Branch of the Moose River, and Main Branch of the Moose River

NEW YORK STATE DEPARTMENT OF ENVIRONMENTAL CONSERVATION
625 Broadway, Albany NY 12233

NEW YORK STATE DEPARTMENT OF TRANSPORTATION
50 Wolf Road, Albany, NY 12232

www.dec.ny.gov

May 2020

2020 UMP Amendment

Amended the 1996 UMP/EIS with New, Preferred Alternative (7):

Remsen to Tupper Lake Segment:

Rail Service

~under DOT Jurisdiction~

Rail service May to November

Snowmobiling December to April

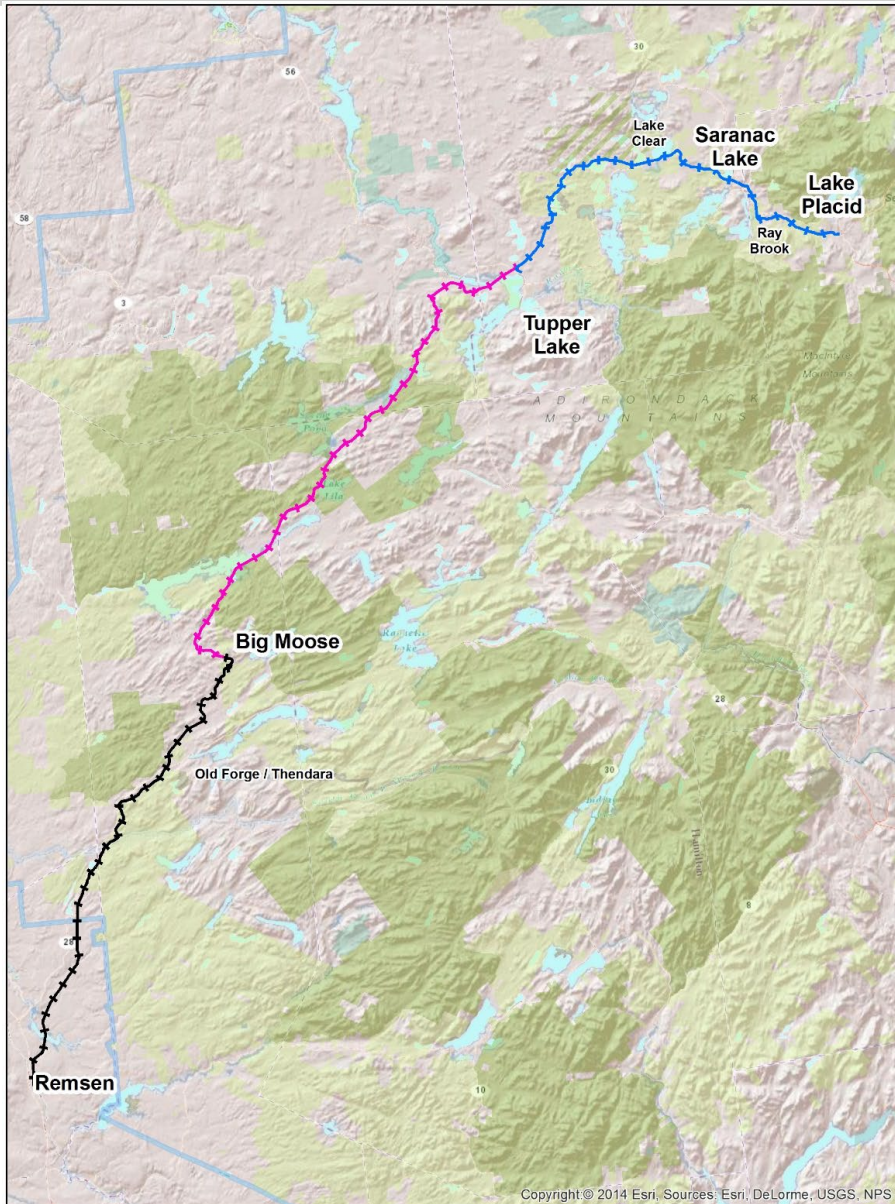
Tupper Lake to Lake Placid Segment:

Multi-Use Recreational Trail

~under DEC Jurisdiction~

Bicycling, hiking, cross-country skiing, snowmobiling, and Class 1 E-Bikes

Adirondack Rail Trail - Unit Management Plan



**Remsen-Lake Placid Travel Corridor:
119 miles**

Rail Trail

Tupper Lake to Lake Placid

34 miles (DEC Jurisdiction)

Rail Service Rehabilitated

Big Moose to Tupper Lake

45 miles (DOT Jurisdiction)

Existing Rail Service

Remsen to Big Moose

40 miles (DOT Jurisdiction)

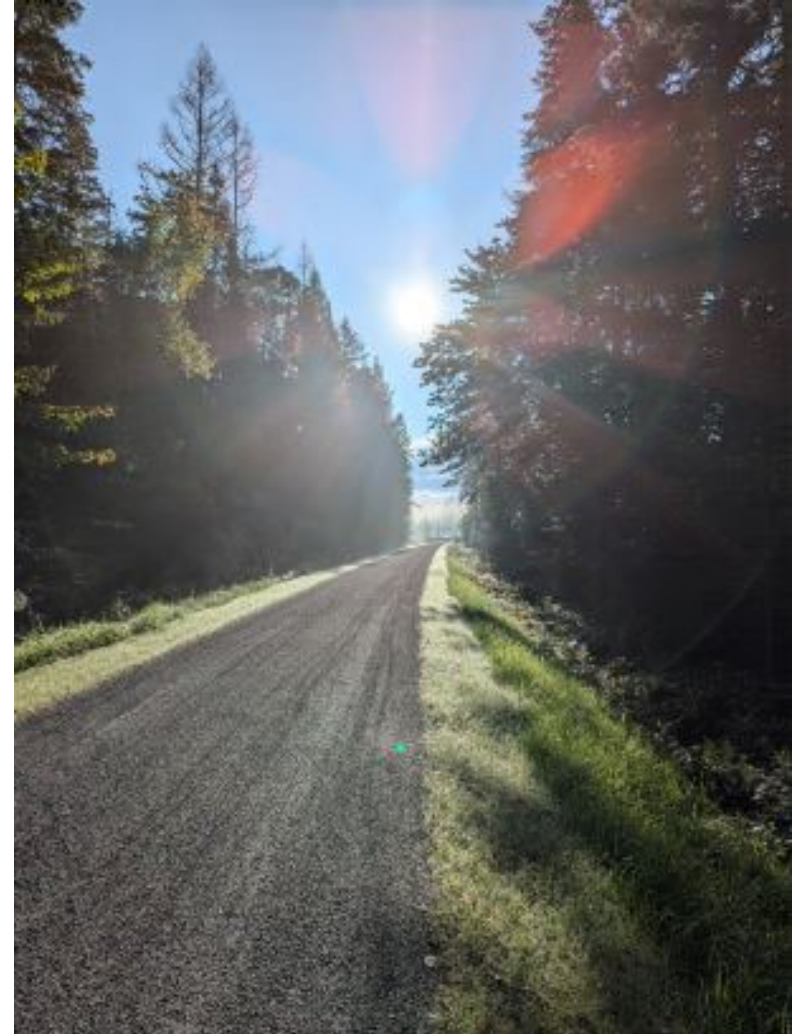
Adirondack Rail Trail - Construction

- ❖ DEC is responsible for all management of the Adirondack Rail Trail
- ❖ Current focus is on construction and maintenance, and ensuring safe, enjoyable use of the trail
- ❖ Construction includes the trail itself and all associated structures and amenities
- ❖ Public information and education are key aspects for safe and enjoyable use



Adirondack Rail Trail - Construction

- ❖ Design and construction overseen by the Office of General Services (OGS)
- ❖ Construction split into 3 phases
 - ❖ Phase 1 - Lake Placid to Saranac Lake
 - ❖ Phase 2 - Saranac Lake to Floodwood Road
 - ❖ Phase 3 – Floodwood Road to Tupper Lake
- ❖ Phases 1 and 2 are complete offering 25 miles of open trail
- ❖ Phase 3 scheduled to be substantially complete this Fall.



Adirondack Rail Trail - Construction

Applying the Topcoat



Adirondack Rail Trail - Construction

Applying the Topcoat



Adirondack Rail Trail - Reception

- ❖ The Adirondack Rail Trail has been generally well received
- ❖ Managing the trail has been a learning process
- ❖ Use of the trail has been increasing as the phases open. Use will likely increase more once Phase 3 is complete and amenities are added

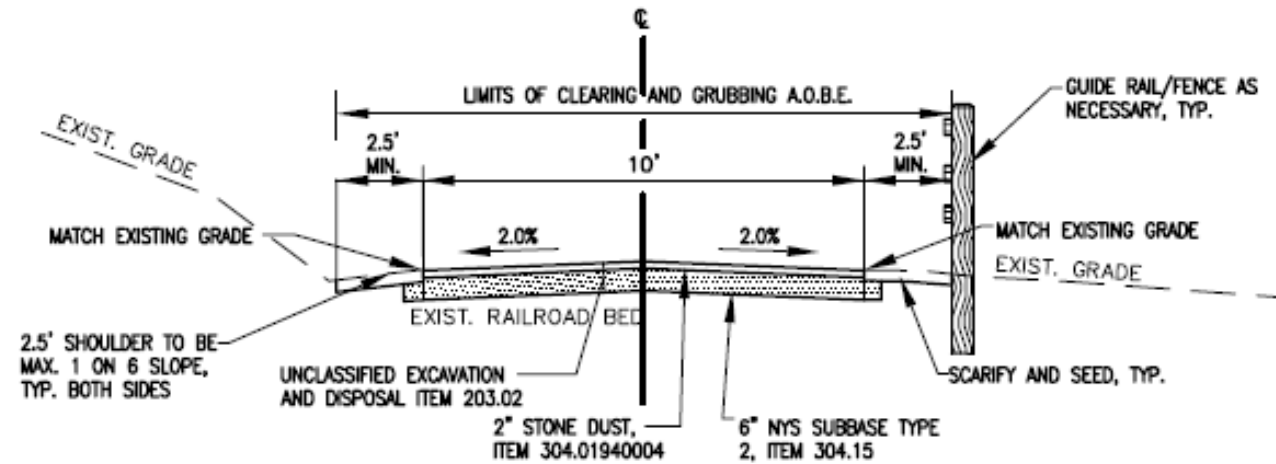


Adirondack Rail Trail - Accessibility

- ❖ The entire 34-mile trail will be wheelchair accessible
- ❖ The trail surface is firm and stable consisting of compacted stone dust or asphalt
- ❖ Running slopes are within established guidelines for wheelchair accessibility
- ❖ Amenities and supporting infrastructure will also be fully accessible to the greatest extent possible



Adirondack Rail Trail - Accessibility



NOTES:

1. APPROXIMATELY 75% OF SUBBASE MATERIAL CAN BE COMPOSED OF CRUSHED/IN-SITU BALLAST.

TYPICAL SECTION 1 – STONE DUST TRAIL SECTION

NO SCALE

Adirondack Rail Trail - Partnerships

DEC appreciates the many partners who
are helping to make the rail trail a success

- Office of General Services (OGS)
- Department of Transportation (DOT)
- Town of Tupper Lake
- Town of North Elba
- Town of Harrietstown
- Village of Saranac Lake
- Village of Lake Placid
- Regional Office of Sustainable Tourism (ROOST)
- New York State Snowmobile Association (NYSSA)
- Adirondack Rail Trail Association (ARTA)
- Open Space Institute (OSI)
- Lake Placid North Elba Historical Society

Adirondack Rail Trail - Saranac Lake Depot

Objectives for the Saranac Lake Depot

1. Preservation of the historic structures
2. Creating a public outdoor space
3. Historic interpretation
4. Providing services that support and complement the Adirondack Rail Trail



Adirondack Rail Trail - Saranac Lake Depot

Request for Information (RFI) in 2023 to determine interest in possible uses for the Depot property

- Clarified Guiding principals for reuse of the Depot property:
 - Prioritize uses directly tied to the rail trail, UMP requirements, and DEC's mission
 - Maximize direct public benefit from use of the space
 - Favor options that do not require significant capital improvements and/or structural changes to the Depot's interior
- Led to determination that DEC should provide basic repair and upgrades to Depot property to accommodate potential reuse
- A Request For Proposals (or similar, public process) will follow repair and upgrades

Adirondack Rail Trail - Saranac Lake Depot

Depot Restoration is underway

- ✓ Roof replaced in 2024
- Work in progress (Fall 2025)
 - Remediation of lead paint
 - Replacement of rotted trim, soffit, siding/shakes
 - Repainting of entire structure
 - Power washing of stone portions of building façade
 - Removal and replacement of stamped concrete sidewalk
 - Replacement of light fixtures beneath the sweeping overhang
 - Installation of gutters on portico
- Upgrade of electrical, mechanical and environmental systems (2026)



Adirondack Rail Trail - Lake Placid Trailhead

- ❖ Lake Placid is the eastern terminus of the Adirondack Rail Trail
- ❖ The train station and surrounding property in Lake Placid is owned by the Lake Placid-North Elba Historical Society (LPNEHS)
- ❖ The Village of Lake Placid acquired a portion of property from the LPNEHS to construct a trailhead for the Adirondack Rail Trail
- ❖ The Open Space Institute is working with the Village of Lake Placid to construct a public trailhead on the property acquired from LPNEHS



OPEN SPACE
INSTITUTE

Adirondack Rail Trail - Tupper Lake Trailhead

- ❖ Tupper Lake is the western terminus of the Adirondack Rail Trail and the northern terminus of rail service on the RLPTC
- ❖ The train station in Tupper Lake is owned by the Town of Tupper Lake
- ❖ DEC has constructed a Trailhead in Tupper Lake for rail trail users (north of the Tupper Lake Depot)
- ❖ DOT controls the final section of trail leading from DEC Trailhead to the Tupper Lake train station

Adirondack Rail Trail - Signage and Historic Interpretation

Signage development guided by:

- Historic Preservation Plan
- Branding guidelines
- Wayfinding needs
- Traffic-Safety needs



ADIRONDACK RAIL TRAIL

Adirondack Rail Trail - Signage Historic Interpretation

Signage will include:

- Kiosks
 - Pertinent trail information
- Interpretive panels
 - Historical and natural interpretation
- Trail and road junction signs
- Amenity signs
- Traffic and safety signs
- Mile markers



ADIRONDACK RAIL TRAIL



Department of Environmental Conservation