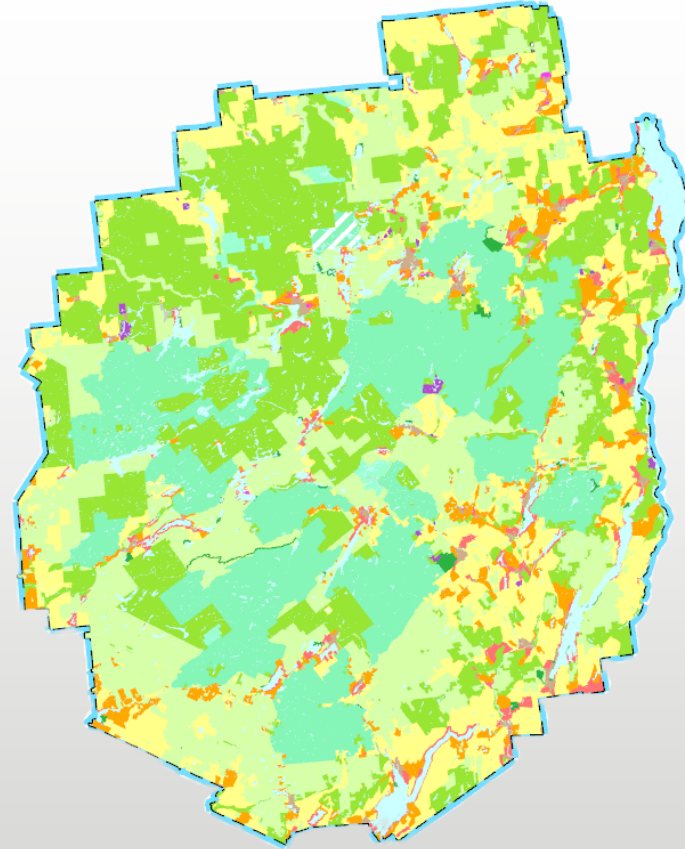




**Adirondack
Park Agency**

GEOGRAPHIC INFORMATION SYSTEMS



A PRESENTATION
BY MOLLY JORDAN AND EMILY PULCINI

APRIL 15, 2026

OVERVIEW

☑ GIS Team Objectives

🖥️ APA GIS Server

🖥️ Web Applications

🤝 Program Initiative Support

📍 Public Resources

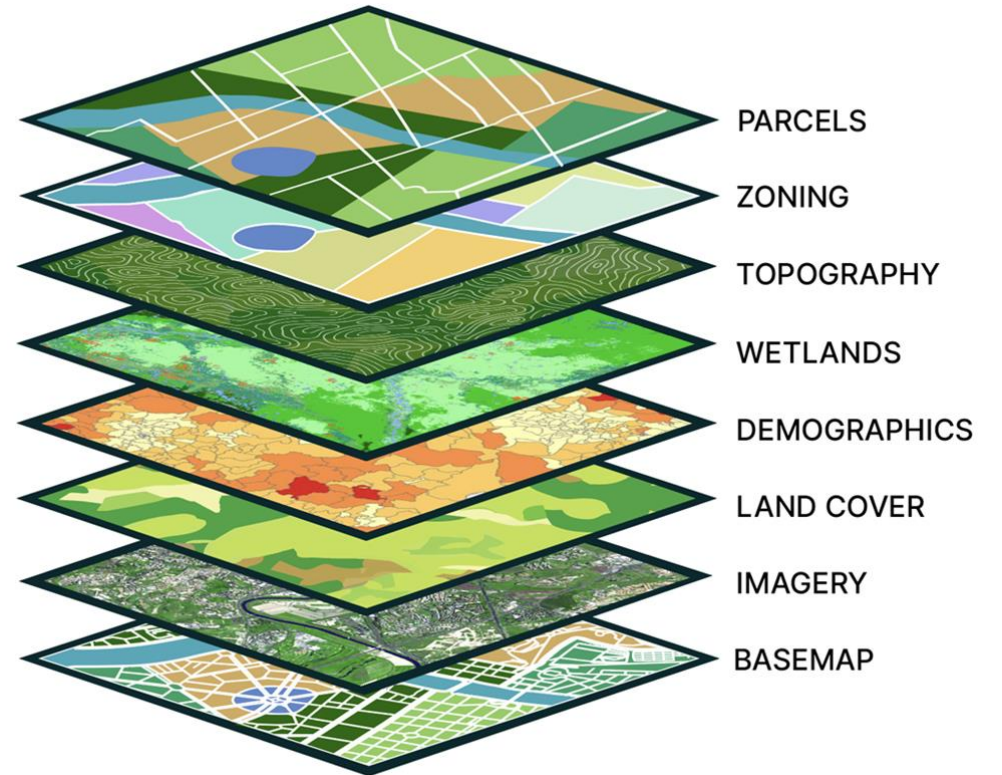
🧠 Takeaways



Emily & Molly at NYS GeoCon 2025

GEOGRAPHIC INFORMATION SYSTEMS (GIS)

- Collection, visualization, and analysis of geospatial data
- Combination of hardware and software
- Connects spatial data elements with descriptive attributes

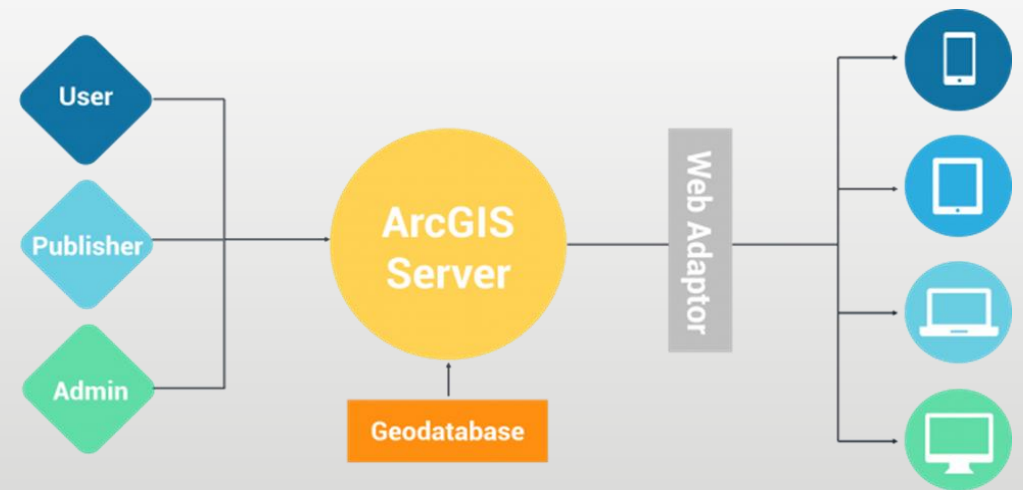


GIS TEAM OBJECTIVES

These concepts serve as guidance throughout our GIS work...

- **Support regulatory, scientific, and planning staff spatial initiatives**
- **Strive to provide accurate and beneficial spatial information**
- **Maintain consistency and transparency for GIS at the APA**
- **Help implement and uphold the APA Act (APLUDP/SLMP), Freshwater Wetlands Act, Rivers Act**

APA GIS SERVER



APA GIS SERVER

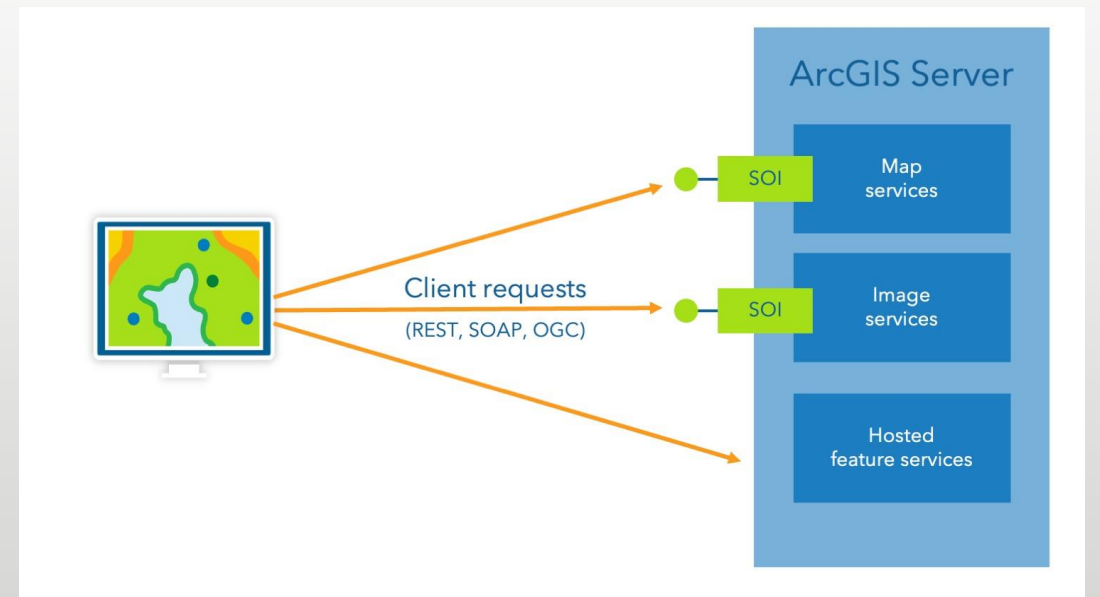
In house management of our GIS data server enables the GIS team to:

- **Manage hardware and software updates**
 - **New server launched December 2025**
- **Author authoritative Agency datasets**
- **Maintain consistency and organization of our data**




Example picture of a server.

WEB APPLICATIONS



Find address or place



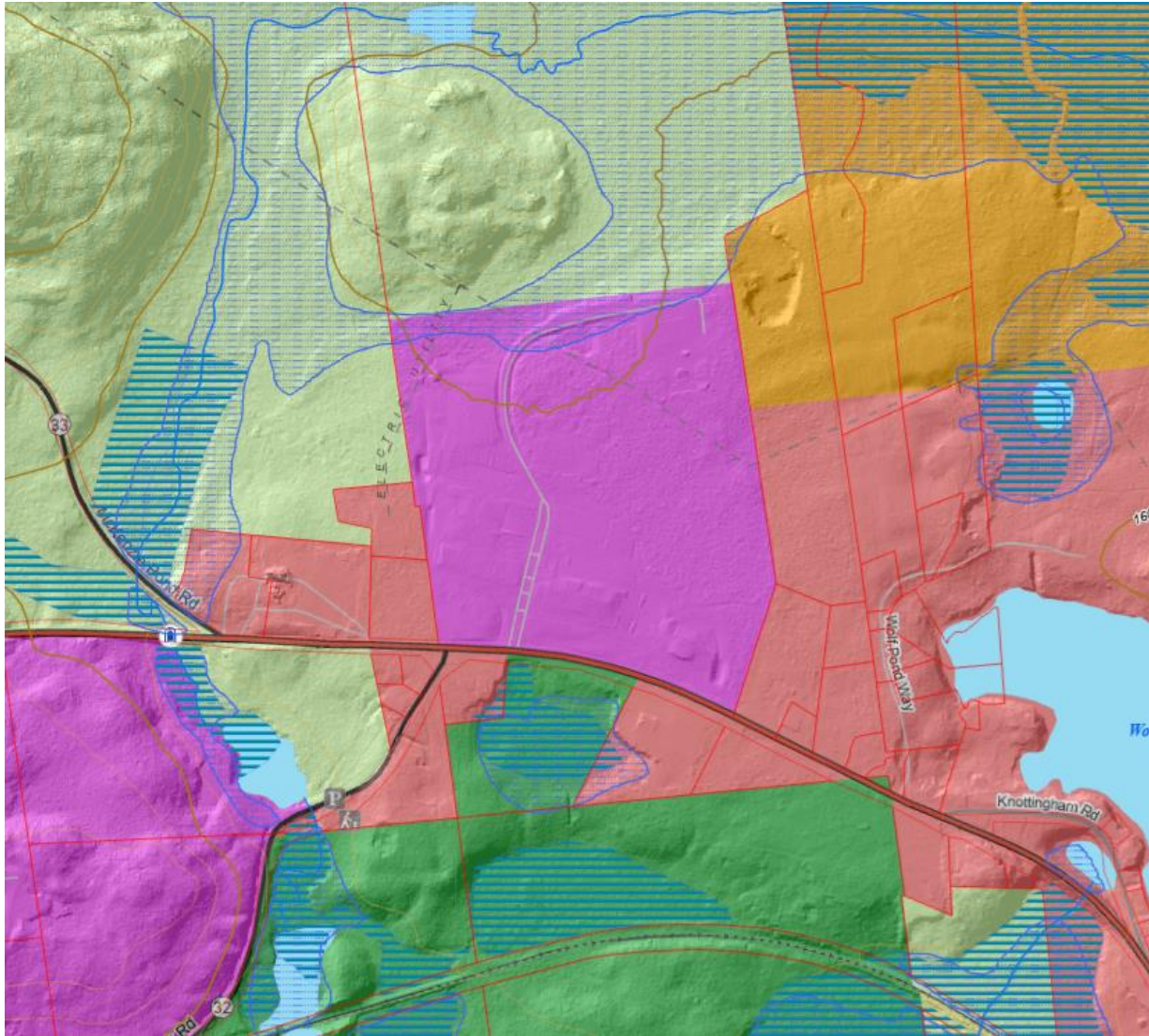
NEW YORK STATE | Adirondack
Park Agency

SPATIAL ANALYSIS & DECISION SUPPORT

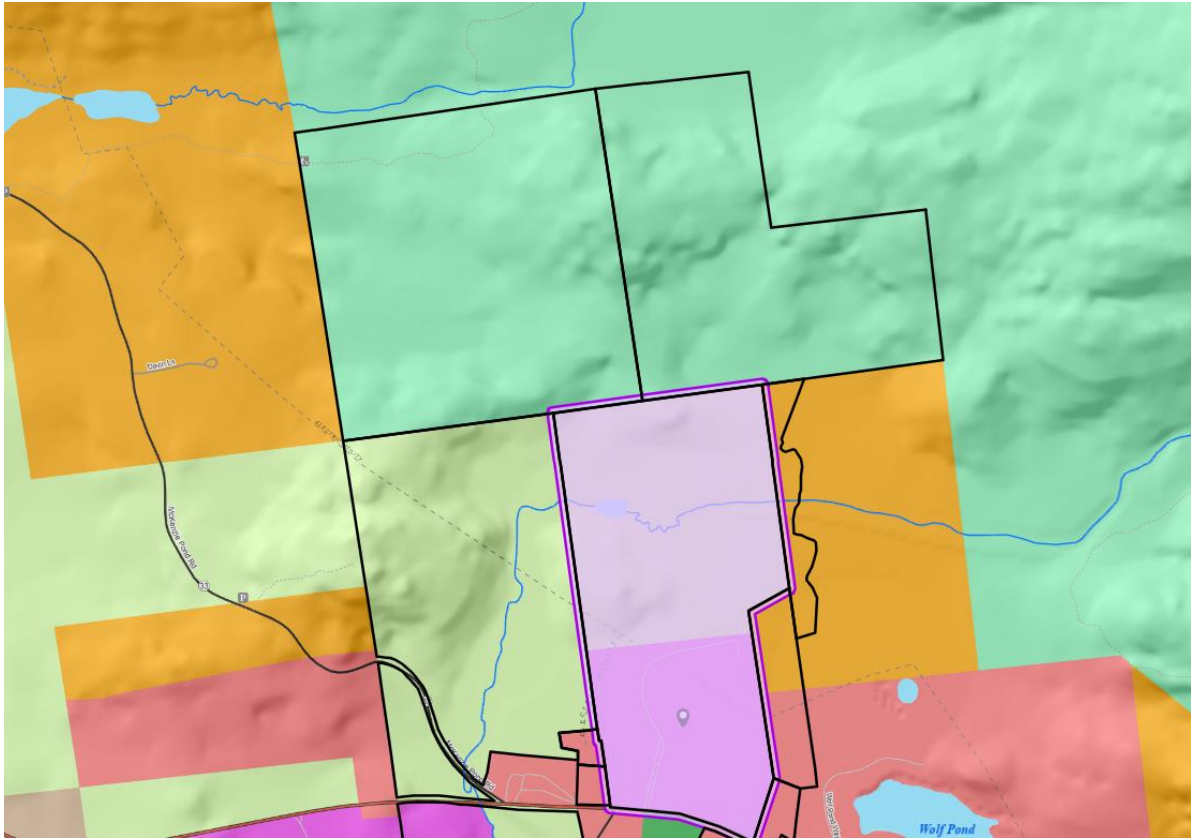
Do not show this splash screen again.

OK

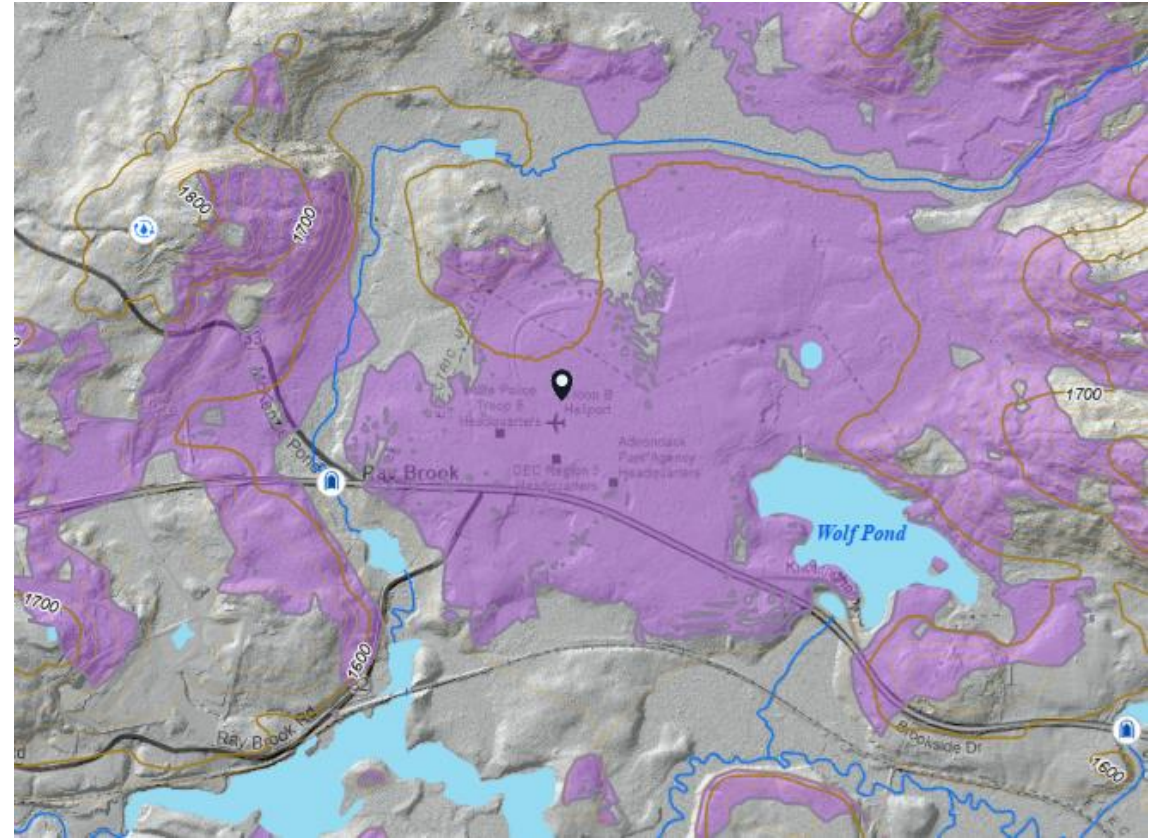
DATA LAYERS



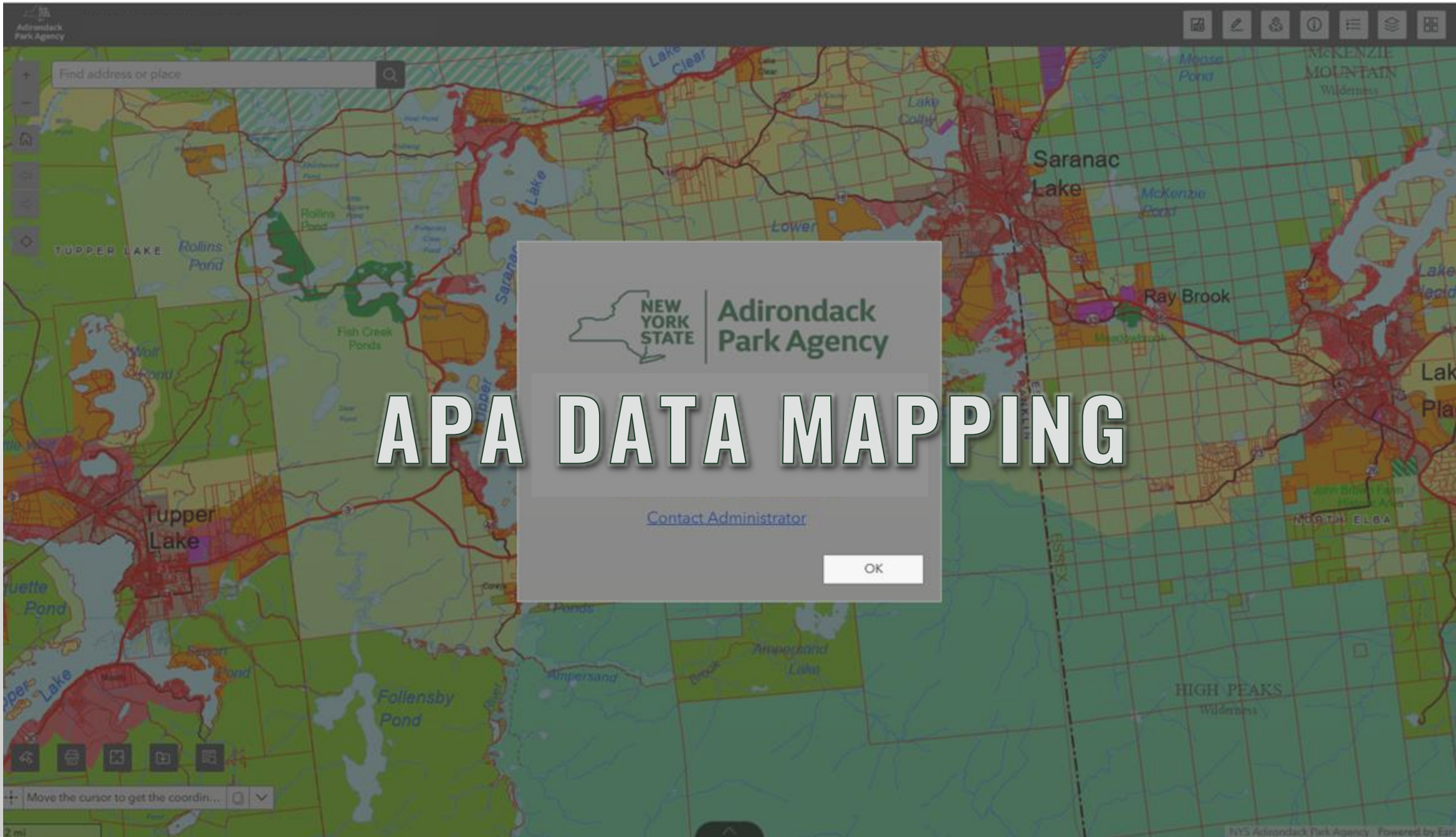
CUSTOM GEOPROCESSING TOOLS



Parcel AButters Tool



Visibility Model Tool



APA DATA MAPPING

[Contact Administrator](#)

OK

Move the cursor to get the coordin...

PROGRAM INITIATIVE SUPPORT



PROGRAM INITIATIVE SUPPORT

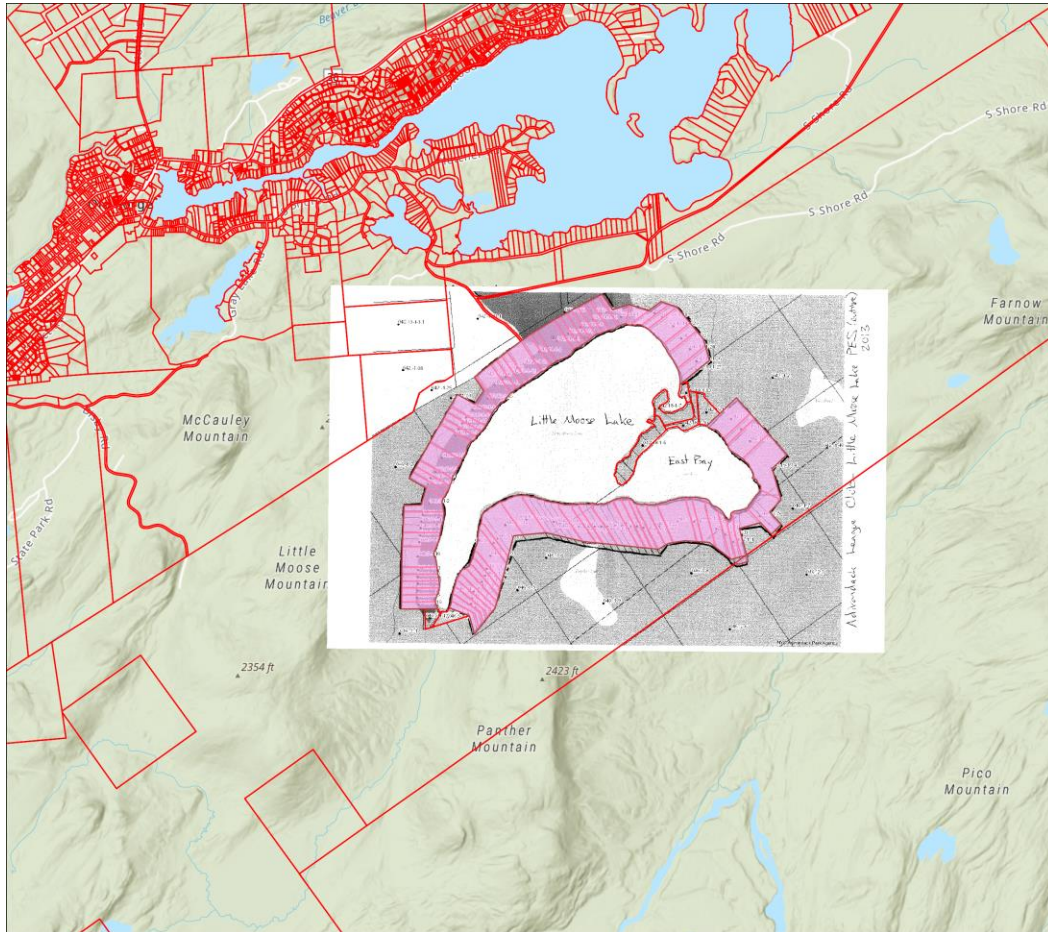
APA staff have many different GIS needs...

- Mapping projects
- Field mapping
- 3D Workstations
- Updating and interpreting the map

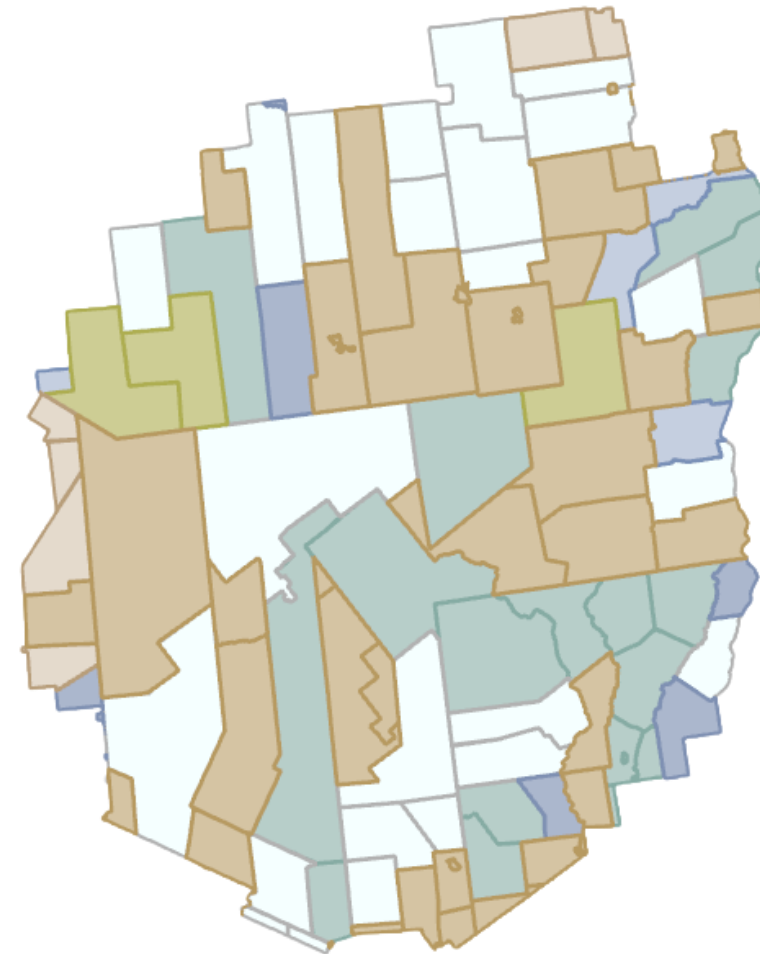


Early rendition of APLUDP map using pieces of mylar.

MAPPING PROJECTS



Digitization of pre-existing subdivisions

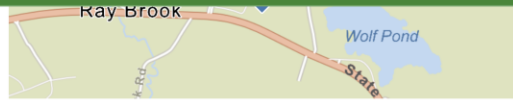


Local land use controls

- APA-Approved Local Land Use Program
- No ALLUP, SD, SPR, or Zoning
- Subdivision Regulations
- Subdivision & Site Plan Review
- Site Plan Review
- Zoning
- Zoning & Subdivision Regulations

FIELD MAPPING

Primitive Tent Site Assessment



Latitude *

44.300029232263604

Longitude *

-74.07762478659545

Horizontal Accuracy (hdop) *

5.034768486131203

Select the land classification the tentsite is located in. *

- Wilderness
- Primitive
- Canoe
- Wild Forest
- Historic
- Pending

Which wilderness area?

High Peaks Wilderness Area

2026 Wetlands Site Visit Survey

Site Visit Photos

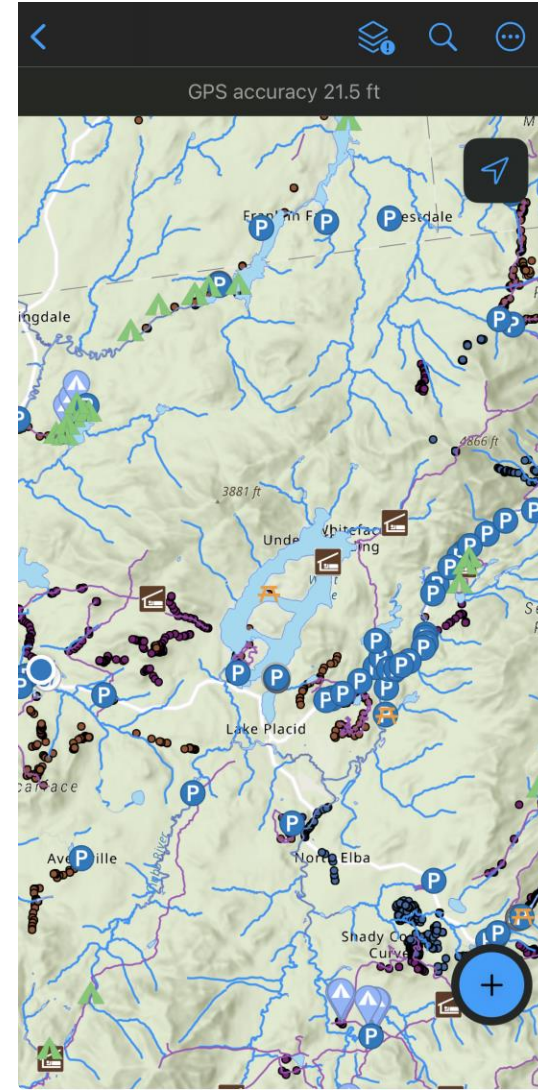
Reason for Request

- Jurisdictional Determination
- Delineation
- Partial Delineation
- Validation
- Enforcement Investigation
- Compliance
- State Land Consultation
- Other

Name of Waterbody

Jurisdictional Wetlands On-Site?

- Yes
- No
- Unknown



Deep Hole Test Pits TEST

No location

+ Add Point

Take Photo

Attach

STAFF INITIALS *

ABC

DATE *

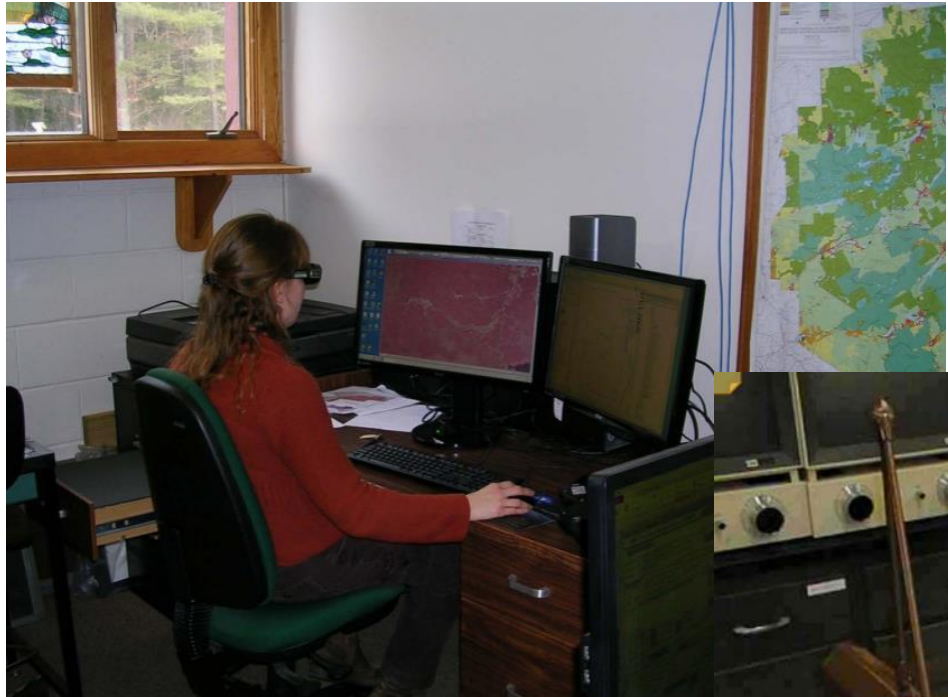
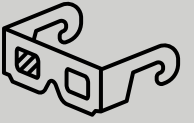
No Value

PROJECT NUMBER *

P2025-0XXX

Please fill in the project number associated with this DHTP.

3D WORKSTATIONS



NVIDIA 3D Vision

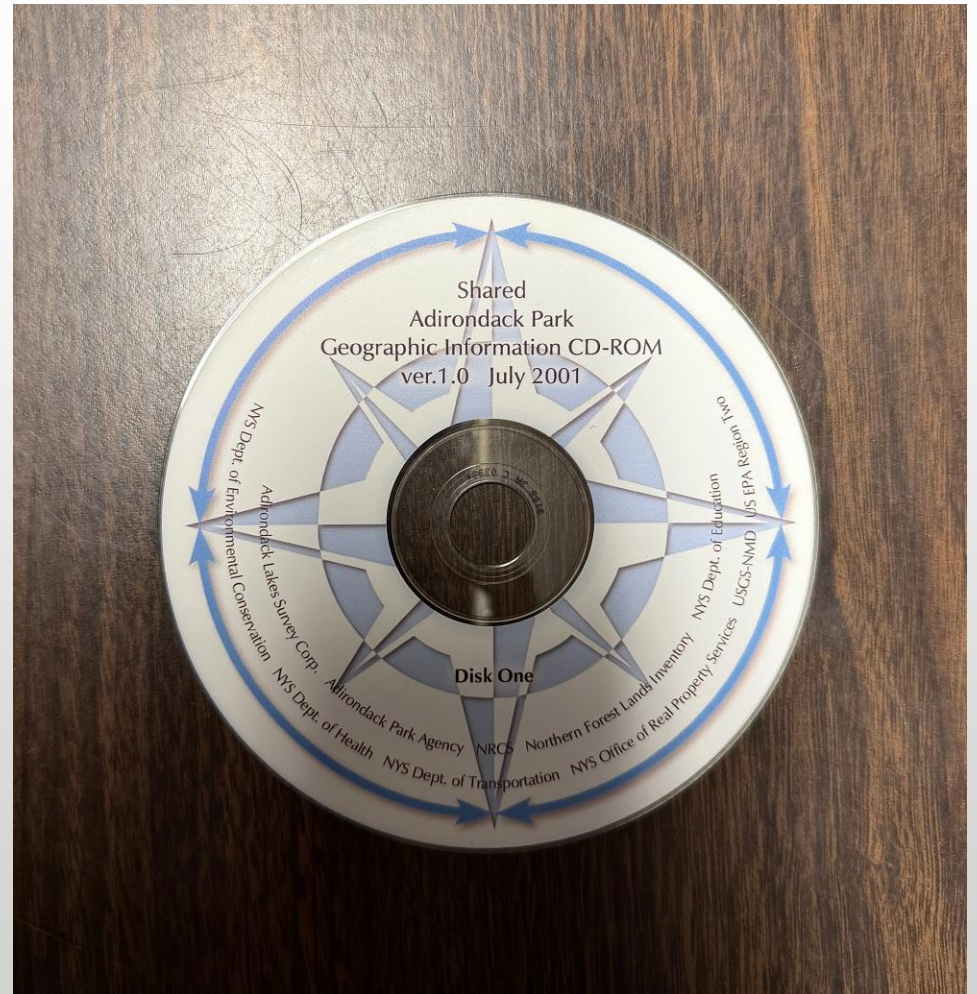


Stereoscope



3D Pluriview

PUBLIC RESOURCES



PUBLIC RESOURCES



An official website of New York State.
Here's how you know. ▾

Adirondack Park Agency

About Permitting Planning Science Contact



NEWS

PUBLIC COMMENT

MAPPING

FORMS

[Home](#) > [Maps & GIS](#)

Maps & Geographic Information Systems (GIS)

Since 1980, the Adirondack Park Agency has used Geographic Information Systems (GIS) to provide spatial data resources to the public and support internal Agency operations. These are collections of data that are linked to geographic locations and then represented visually as maps.

The Agency's GIS services include maintaining the [Adirondack Park Land Use and Development Plan](#) and [Adirondack Park State Land maps](#), managing the private land [map amendment process](#), and providing map boundary advice to staff, partner agencies, local governments, and landowners. Internally, GIS is frequently used to inform project review and to map jurisdictional information.

The following resources are regularly maintained to ensure that the public has access to current spatial data. For questions about the APA's GIS program, [please contact us](#).

See next slide!

APA ON ARCGIS ONLINE

DOWNLOADS

MAP ROOM

Tabular format
layer downloads

Map Room – Featured
and archived mapping

ARCGIS ONLINE

Who (target audience): The public, GIS users, stakeholders

What: Repository for public data layers and applications

Where: ArcGIS Online – <https://adirondack.maps.arcgis.com>

Why: To explore, educate, and engage with our spatial data



New York State Adirondack Park Agency

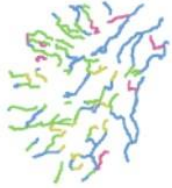
ARCGIS ONLINE

Adirondack Rivers System

Overview

Data

Visualization



Adirondack Park portion of the New York State Wild, Scenic and Recreational Rivers System.

Feature layer

Schema updated: Feb 27, 2025

Description

Designated Rivers System setback areas in the New York State Adirondack Park. Areas depict Wild, Scenic, Recreational, and Study river quarter mile setbacks from National Hydrography Dataset (NHD) surface water features. Created by the Adirondack Park Agency. Reviewed as of February 2018.

Layers

River Buffer Areas
Polygon layer

Terms of use

This data is not intended for legal jurisdictional determinations. Contact the Adirondack Park Agency for all boundary or jurisdictional questions.

Open in Map Viewer

Open in Scene Viewer

Open in ArcGIS Pro

View metadata

Owner

NYS Adirondack Park Agency
APA_Administrator

Details

View count
53,048

Source
Feature service

URL

[https://services2.arcgis.co...](https://services2.arcgis.com/8krRUWgjfzA4cgL3/ArcGIS/rest/services)

Categories

Regulatory

Tags

Adirondack Park Boundary Rivers
Regulated Rivers New York State

Open in Map Viewer

Open in Scene Viewer

Share

Open in ArcGIS Pro

Export data

Export to shapefile

Export to CSV file

Export to KML

Export to Excel

Export to file geodatabase

Export to GeoJSON

Export to feature collection

Export to GeoPackage

<https://services2.arcgis.com/8krRUWgjfzA4cgL3/ArcGIS/rest/services>

ARCGIS ONLINE

- NYS Adirondack Park Agency

Select the park, county, town, or village of interest to view acreage statistics.

Filter by municipality type:
Town

Filter by county name:
Essex

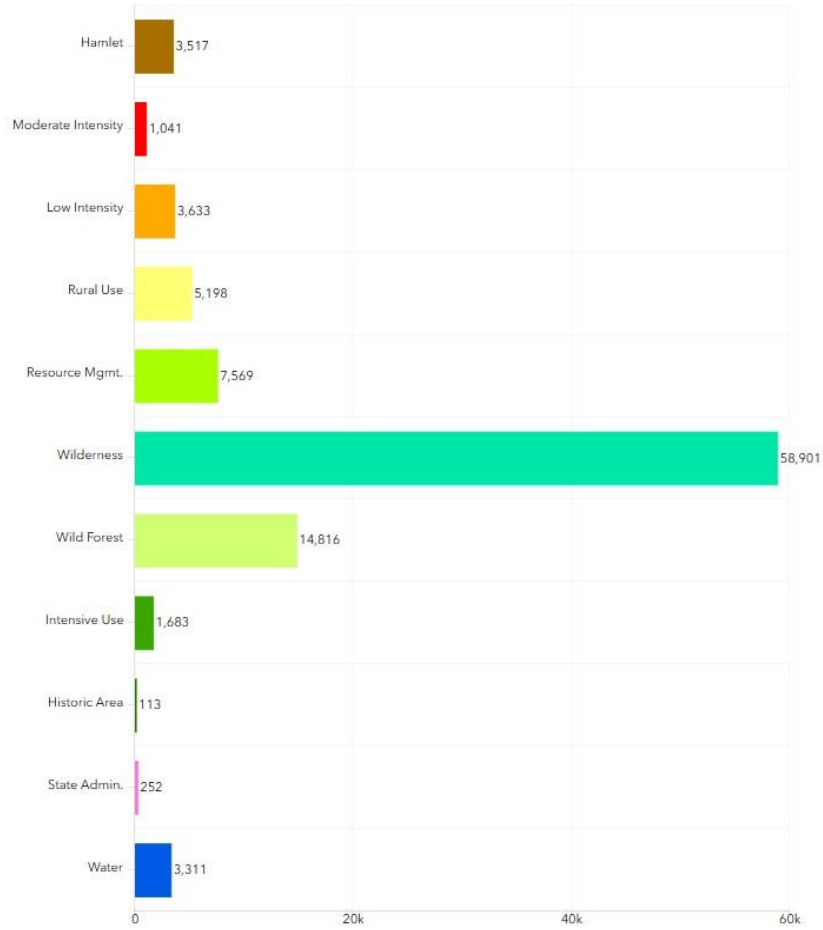
Select an area:

- Town of Minerva
- Town of Moriah
- Town of Newcomb
- Town of North Elba
- Town of North Hudson
- Town of Saint Armand

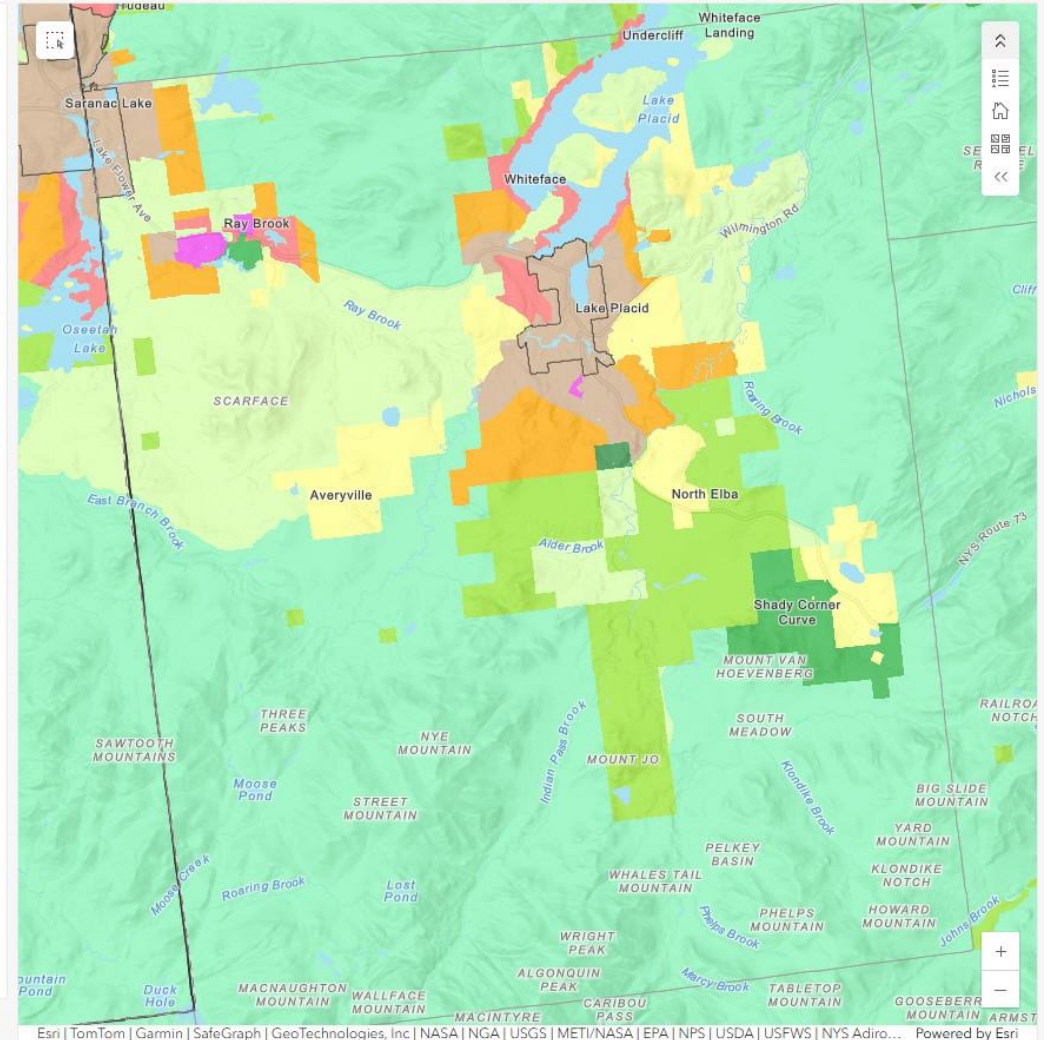
Reset

About Adirondack Land Classification

Land Classification Acreage of selected area



Land Class Private State State/Private Total Acres



Esri | TomTom | Garmin | SafeGraph | GeoTechnologies, Inc | NASA | NGA | USGS | METI/NASA | EPA | NPS | USDA | USFWS | NYS Adiro... Powered by Esri

LOOKUP LITE

Adirondack Park Agency
Lookup Lite explore. engage. educate.

Find address or place

NEW YORK STATE Adirondack Park Agency

APA Lookup Lite 1.0

This data is not intended for legal jurisdictional determinations. [Contact](#) the Adirondack Park Agency for all boundary or jurisdictional questions.

[Contact Administrator](#)

I agree to the above terms and conditions

Esri, NPS, NYA, USGS, Garmin, DeLorme, GeoEye, (Geo)Cue, IGN, Intermap, (IGAR) Inc., Japan Map Information Service, NASA, NASA/GPO, NPS, USDO, USFWS, (NY) Adirondack Park Agency, (NY) ITCS Geospatial Services, Powered by Esri

**“THE APPLICATION OF
GIS IS LIMITED ONLY
BY THE IMAGINATION
OF THOSE WHO USE IT”**



JACK AND LAURA DANGERMOND (PRESIDENT AND FOUNDERS OF ESRI)

QUESTIONS?

Contacts for APA GIS Program:

Molly Jordan, Mapping Tech 3

Molly.Jordan@apa.ny.gov

Matt Kendall, Env. Program Specialist 2

Matthew.Kendall@apa.ny.gov

Emily Pulcini, Mapping Tech 1

Emily.Pulcini@apa.ny.gov





**Adirondack
Park Agency**